

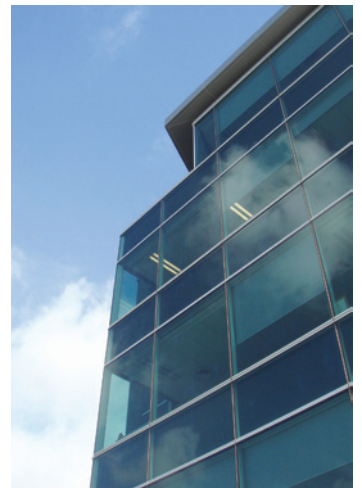


# Thermosash – Project of the Month

## Quay Park



August 2008



**Contractor:** Mansons Developments Ltd  
**Architect:** Jensen Chambers Young Ltd (jcy)

### Park features:

- PW 1000 Unitised curtainwall, full height pane floor to floor
- 180mm solar shading
- Integrated total cladding solution - composite panel
- Unisun louvres cladding to plant room
- High performance IGU's by Woods Glass (NZ) Ltd
- Shopfront sliding door - bifold and automatic
- Glazing bar canopy
- Revolving door main entry
- 5 Star rating

