

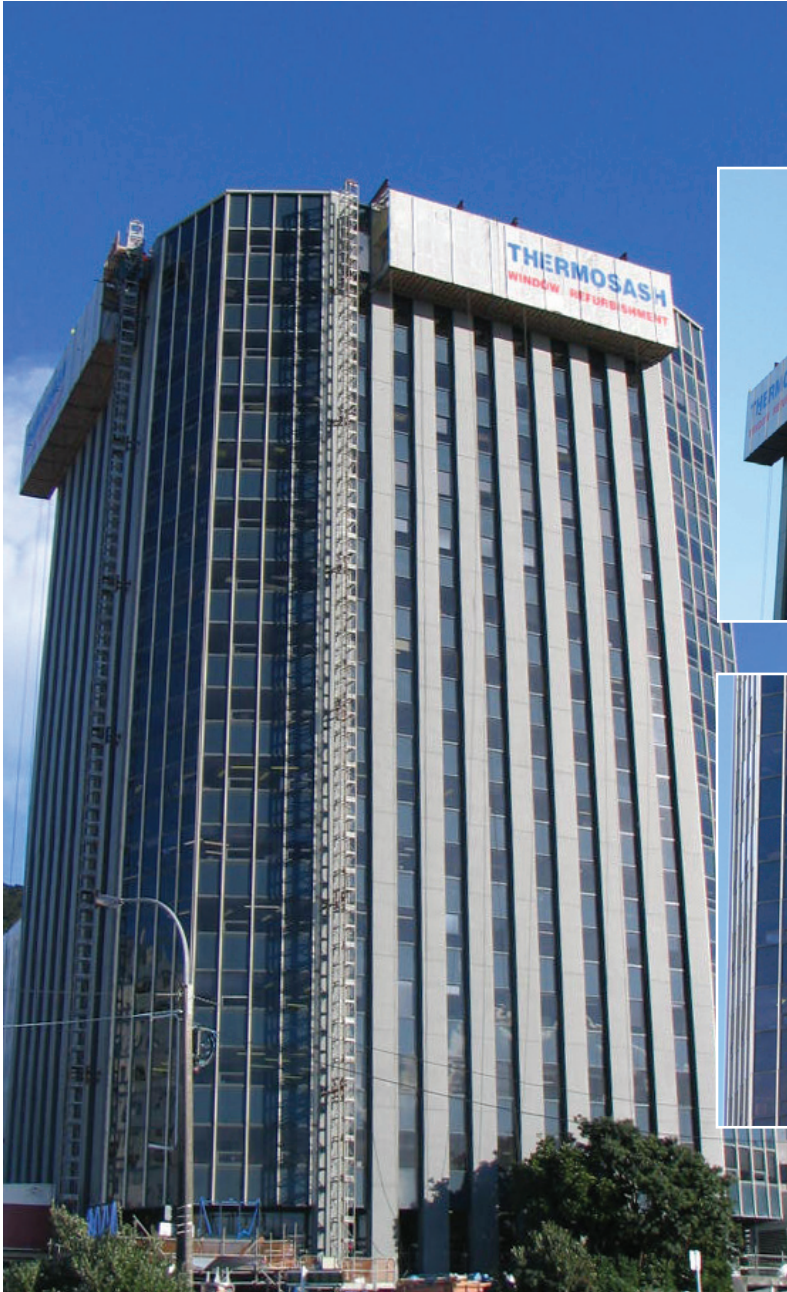
Est Since 1973



Thermosash – Project of the Month

180 Molesworth St Wellington - refurbishment

December 2008



Contractor: Fletcher Construction Co Ltd
Architect: Stephenson & Turner
Client: Brookfield Multiplex Construction Ltd
Project Management: PHC Ltd

Features:

- Vertical Delta Commercial strip windows into seismic frames
- Shopfront automatic doors
- Design of access solution to complete the window replacement requirements while the building was tenanted
- Completed ahead of construction programme over winter months

