

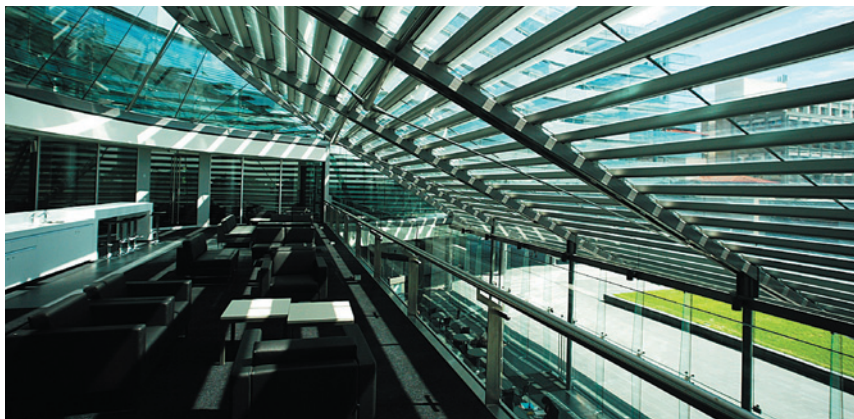
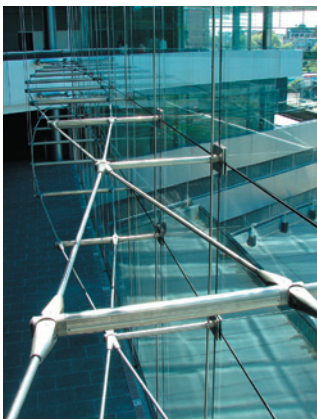
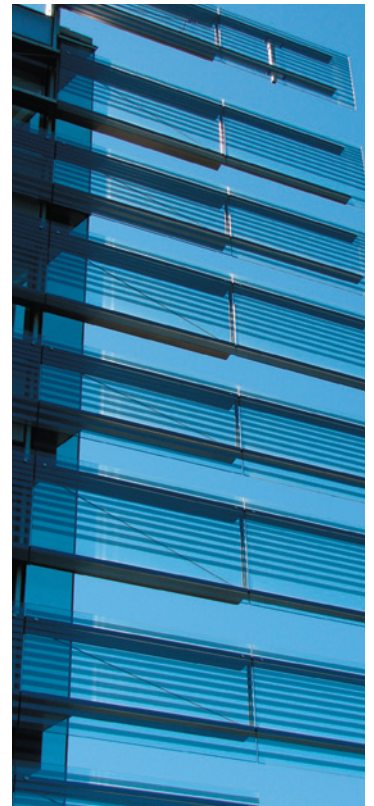


# Thermosash – Project of the Month

University of Auckland Business School



June 2008



Clockwise from top left: Cantilevered titanium striped glass sunscreens from curtainwall and floor to ceiling PW 1000 curtainwall, Stainless steel composite feature spandrels integrated into PW 1000 curtainwall with integrated titanium striped sunscreens, Stainless steel horizontal tension truss to atrium, Solarshade feature skylight, total vision main entry, conical total vision, Bespoke stainless steel nodes to tension truss

**Contractor:** Fletcher Construction Group  
**Architect:** fjmt and Archmedia

## Architecture NZ Jan/Feb Issue – Interview

Over the past few years, architects here have expressed quite strong opinions (at least in private), about the standard of workmanship in the construction industry. They say that they take construction competence, or lack of it, into account when they are designing.

### *What has been your experience?*

*“ There were considerable technical challenges and a number of things that haven’t been done before, like the insertion of strips of titanium film between two layers of glass to create the Sunscreens. We designed some things that would be a challenge for anyone in the world to deliver, so we have been very impressed with the work of Fletchers and subcontractors like Thermosash on this project.”*

**Richard Francis-Jones**  
Design Architect of the University  
of Auckland Business School

**BUILDING**

The Fletcher Construction Company Limited  
236 Middleton Road, Johnsonville  
PO Box 548, Wellington, New Zealand  
Tel +64 4 477 7177 Fax +64 4 477 7178

**Reference for Thermosash**

To whom it may concern

Fletcher Construction was appointed as main contractor to the University of Auckland Business School project in December 2003. After a review of this complex iconic project it quickly became apparent that the façade was going to be the key risk to the project, from procurement right through to delivery.

The façade comprises of 3 elements,

1. The suspended structural glass system in the atrium – the largest in NZ
2. The angled main entry louvred roof – a complex three dimensional shape
3. The double layered curtain wall system – with world first glass patterning.

From the start it was clear to us that Thermosash Commercial Ltd wanted to be part of this unique project. After a protracted procurement process of some 10 months where overseas firms were considered, the façade package being split into three elements and retendered to try and get lowest cost, the decision was made to award all 3 elements of the façade to Thermosash Commercial Ltd in June 2005.

Once on board a value engineering session with Thermosash Commercial Ltd was successfully carried out. A large mock-up at Thermosash Commercial Ltd's factory was built to show the difference between the aluminium and stainless steel finishes. With the stainless steel finish selected the shop drawing phase commenced in August 2005. This phase involved several thousand drawings being produced. Weekly sessions with the designers were required as every detail was developed and debated with the Architectural team. It was a painstaking process as the aesthetic imperatives were paramount to the success of the building. It took over a year before all details were agreed.

All through this process Thermosash Commercial Ltd showed excellent technical understanding on how to realise the Architects vision while making the façade buildable.

As the façade entered the production phase it was clear that Thermosash Commercial Ltd were well connected to the international markets for supply of glass, stainless, and aluminium supply. With so much material being produced overseas production progress was discussed on a regular basis to check that our programs were not being threatened. The façade started being installed in the Grafton Gully area in May 2006 with the last sections being complete May 2007. The installation was done in a timely manner with good workmanship and excellent quality of product.

We would have no hesitation in recommending Thermosash Commercial Ltd for future projects as Thermosash's passion and commitment to the project was second to none. It was great to see a Kiwi company take on and successfully complete a world class façade.

Yours faithfully



Richard Coupe  
Area Manager