

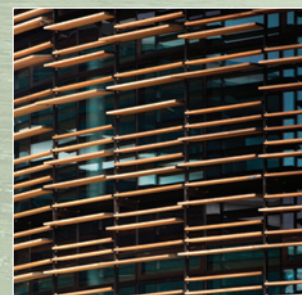


# Thermosash – Project of the Month

## Meridian Building

May 2008

cladding  
**solution's**  
for your  
**green star**  
building.



- Facade engineering
- Total cladding solutions
- Design flexibility
- Green star solutions
- Solar shading
- Design build contracting

The Meridian Building is New Zealand's first completed green building, demonstrating New Zealand excellence with its Green Star NZ 5 Star Office Design certification

**Contractor:** Fletcher Construction Group  
**Architect:** Peddle Thorp/Studio Pacific Architects

NZ's first greenstar building with benefits of ESD (Ecological sustainable design). Environmentally sustainable.

Thermosash elements:-

- Transparent double skin façade with high performance requirements to meet NZ green building council 5 star rating
- The anodized aluminium and glass double skin curtainwall creates a 400mm cavity that captures solar gains and limits heat loss
- Automatically controlled sash windows and louvres in each façade allow natural ventilation and ability to adapt to prevailing weather conditions