

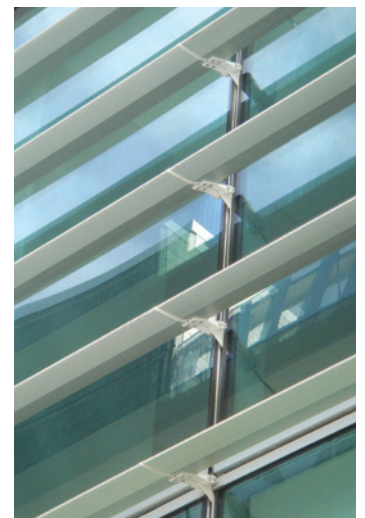


Thermosash – Project of the Month

Quay Plaza



October 2008



Contractor: Mansons Developments Ltd
Architect: Jensen Chambers Young Ltd (jcy)

Plaza features:

- PW 600 unitised curtainwalling
- Bifold doors / balcony sliders
- DF 180 solarshading integrated and supported by curtainwall system
- Plantroom louvres
- Composite panel and glass canopy – foil profile
- Composite panel and glass faceted features with wingwall above entry
- 4 Green Star office design rating



Auckland: (09) 444 4944 Wellington: (04) 939 4500 Christchurch: (03) 348 4004

www.thermosash.co.nz