
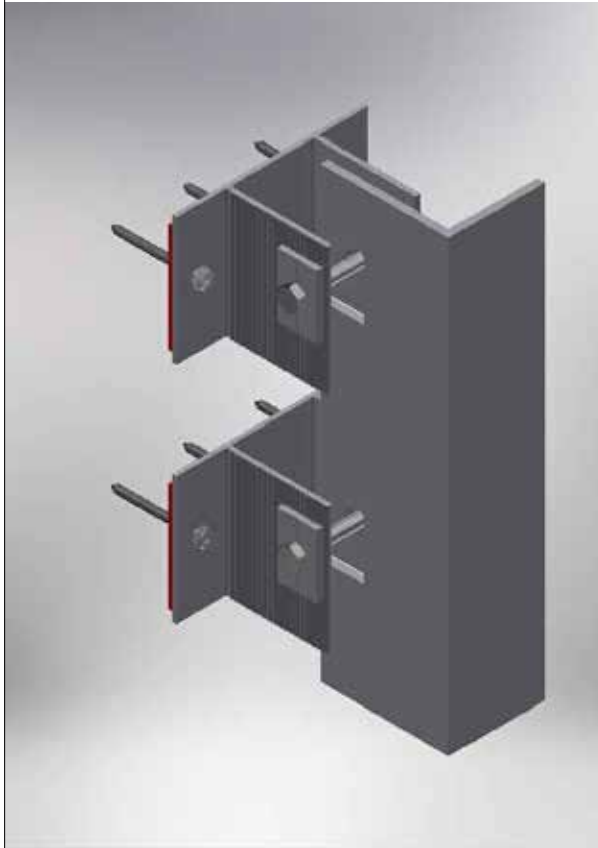



PART OF THE THERMOSASH GROUP COMPANIES :	
<div> <div>  <div> Thermosash <small>BUILDING ENVELOPE SOLUTIONS™</small> </div> </div> <div>  <div> WoodsGlass <small>BUILDING INNOVATIVE GLAZING SOLUTIONS</small> </div> </div> </div>	
COPYRIGHT : THESE DESIGNS, DETAILS AND/OR SPECIFICATIONS AND THE COPYRIGHT THEREIN, REMAIN THE PROPERTY OF THERMOSASH COMMERCIAL LIMITED.	
DISCLAIMER : THESE DETAILS ARE PROVIDED FOR INDICATIVE PURPOSES ONLY. CONSTRUCTION/SYSTEM DETAILS CAN VARY DEPENDING ON PROJECT SPECIFIC SPECIFICATION AND ENGINEERING REQUIREMENTS. THE DESIGNER IS RESPONSIBLE FOR ENSURING DETAILS SATISFY ALL NEW ZEALAND BUILDING CODE CLAUSES. THE DESIGNER IS RESPONSIBLE FOR ENSURING BUILDING WRAPS, FIRESTOPS AND INSULATION/SPECIFICATION COMPLY WITH MANUFACTURERS RECOMMENDATIONS AND NZBC REGULATIONS. REFER TO THERMOSASH WEBSITE FOR FULL TERMS AND CONDITIONS.	
	
<div> <div>Cladding Type :</div> <div> ENCLAD™ GRC - GLASS REINFORCED CONCRETE </div> </div>	
<div> <div>Support System :</div> <div> ENCLAD™ EN06 - HOOK ON SECRET FIXED </div> </div>	
<div> <div>Detail Description :</div> <div>COVER PAGE</div> </div>	
Scale @ A3 :	Rev. : NOV 2022
System # : GRC-EN06-HOA-SF4	Detail # : 00
<div> <div>  <div> Thermosash <small>BUILDING ENVELOPE SOLUTIONS™</small> </div> </div> <div> 158 CENTRAL PARK DRIVE, HENDERSON, AUCKLAND 0610 NEW ZEALAND P: +64 9 444 4944 www.thermosash.co.nz </div> </div>	



01 CAVITY SET OUT
ENCLAD™ GRC PANEL

ADJUSTABLE SYSTEMS ACCOMODATE BUILDING TOLERANCE AND INCORPORATION OF INSULATION FOR H1 REQUIREMENTS - STANDARD SYSTEM CAVITY SHOWN - BESPOKE OPTIONS AVAILABLE FOR PROJECT SPECIFIC REQUIREMENTS

COPYRIGHT : THESE DESIGNS, DETAILS AND/OR SPECIFICATIONS AND THE COPYRIGHT THEREIN, REMAIN THE PROPERTY OF THERMOSASH COMMERCIAL LIMITED.

DISCLAIMER: THESE DETAILS ARE PROVIDED FOR INDICATIVE PURPOSES ONLY. CONSTRUCTION/SYSTEM DETAILS CAN VARY DEPENDING ON PROJECT SPECIFIC SPECIFICATION AND ENGINEERING REQUIREMENTS. THE DESIGNER IS RESPONSIBLE FOR ENSURING DETAILS SATISFY ALL NEW ZEALAND BUILDING CODE CLAUSES. THE DESIGNER IS RESPONSIBLE FOR ENSURING BUILDING WRAPS, FIRESTOPS AND INSULATION/SPECIFICATION COMPLY WITH MANUFACTURERS RECOMMENDATIONS AND NZBC REGULATIONS. REFER TO THERMOSASH WEBSITE FOR FULL TERMS AND CONDITIONS.

LEGEND

A	ENCLAD™ GRC PANEL
B	* SYSTEM CAVITY (115mm MIN. - 140mm MAX.)
*	OTHER OPTIONS AVAILABLE (PROJECT SPECIFIC)

Cladding Type :

**ENCLAD™ GRC -
GLASS REINFORCED CONCRETE**

Support System :

ENCLAD™ EN06 - HOOK ON SECRET FIXED

Detail Description :

CAVITY SETOUT (PLAN VIEW)

Scale @ A3 : 1:2.5

Rev.: NOV 2022

System # :

GRC-EN06-HOA-SF4

	Detail # :
--	------------

01

ENCLAD™ RAINSCREEN SYSTEMS

COPYRIGHT : THESE DESIGNS, DETAILS AND/OR SPECIFICATIONS AND THE COPYRIGHT THEREIN, REMAIN THE PROPERTY OF THERMOSASH COMMERCIAL LIMITED.

DISCLAIMER : THESE DETAILS ARE PROVIDED FOR INDICATIVE PURPOSES ONLY. CONSTRUCTION/SYSTEM DETAILS CAN VARY DEPENDING ON PROJECT SPECIFIC SPECIFICATION AND ENGINEERING REQUIREMENTS. THE DESIGNER IS RESPONSIBLE FOR ENSURING DETAILS SATISFY ALL NEW ZEALAND BUILDING CODE CLAUSES. THE DESIGNER IS RESPONSIBLE FOR ENSURING BUILDING WRAPS, FIRESTOPS AND INSULATION/SPECIFICATION COMPLY WITH MANUFACTURERS RECOMMENDATIONS AND NZBC REGULATIONS. REFER TO THERMOSASH WEBSITE FOR FULL TERMS AND CONDITIONS.

LEGEND

A	ENCLAD™ GRC PANEL
B	* SYSTEM CAVITY (115mm MIN. - 140mm MAX.)
*	OTHER OPTIONS AVAILABLE (PROJECT SPECIFIC)

PARTS LIST

1	ENCLAD™ GRC PANEL
2	ENCLAD EN06 ALUMINIUM SUPPORT PROFILE
3	ENCLAD EN06 ALUMINIUM CHANNEL BRACKET
4	ENCLAD FIXING FOR HOOK (STAINLESS STEEL)
5	ENCLAD PANEL FIXING (STAINLESS STEEL)
6	ENCLAD HOST STRUCTURAL FIXING (STAINLESS STEEL)
7	ENCLAD THERMAL ISOLATION PAD
8	BUILDING WRAP / MEMBRANE (OPTION BY INSITE)
9	RIGID AIR BARRIER / SHEATHING BOARD (OPTION BY INSITE)
10	WALL INSULATION (BY OTHERS)
11	PLASTER BOARD (BY OTHERS)

[illegible]

Cladding Type :

**ENCLAD™ GRC -
GLASS REINFORCED CONCRETE**

Support System :

ENCLAD™ EN06 - HOOK ON SECRET FIXED

Detail Description :

VERTICAL PANEL JOINT DETAIL (PLAN VIEW)

Scale @ A3 : 1:2.5

Rev. : NOV 2022

System # :

Detail # :

GRC-EN06-HOA-SF4

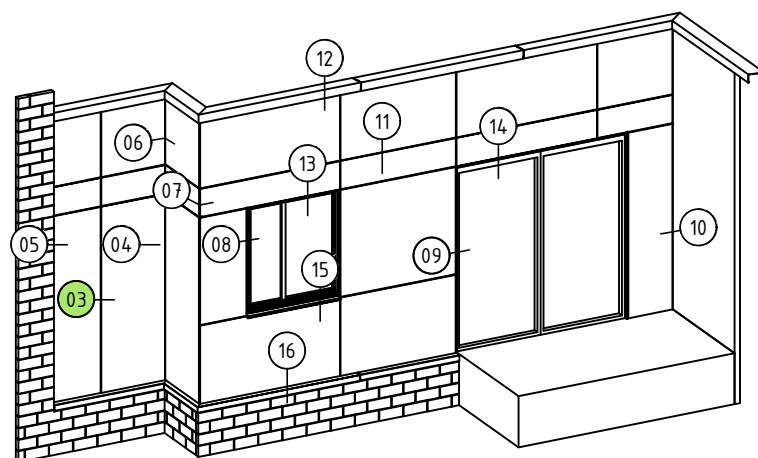
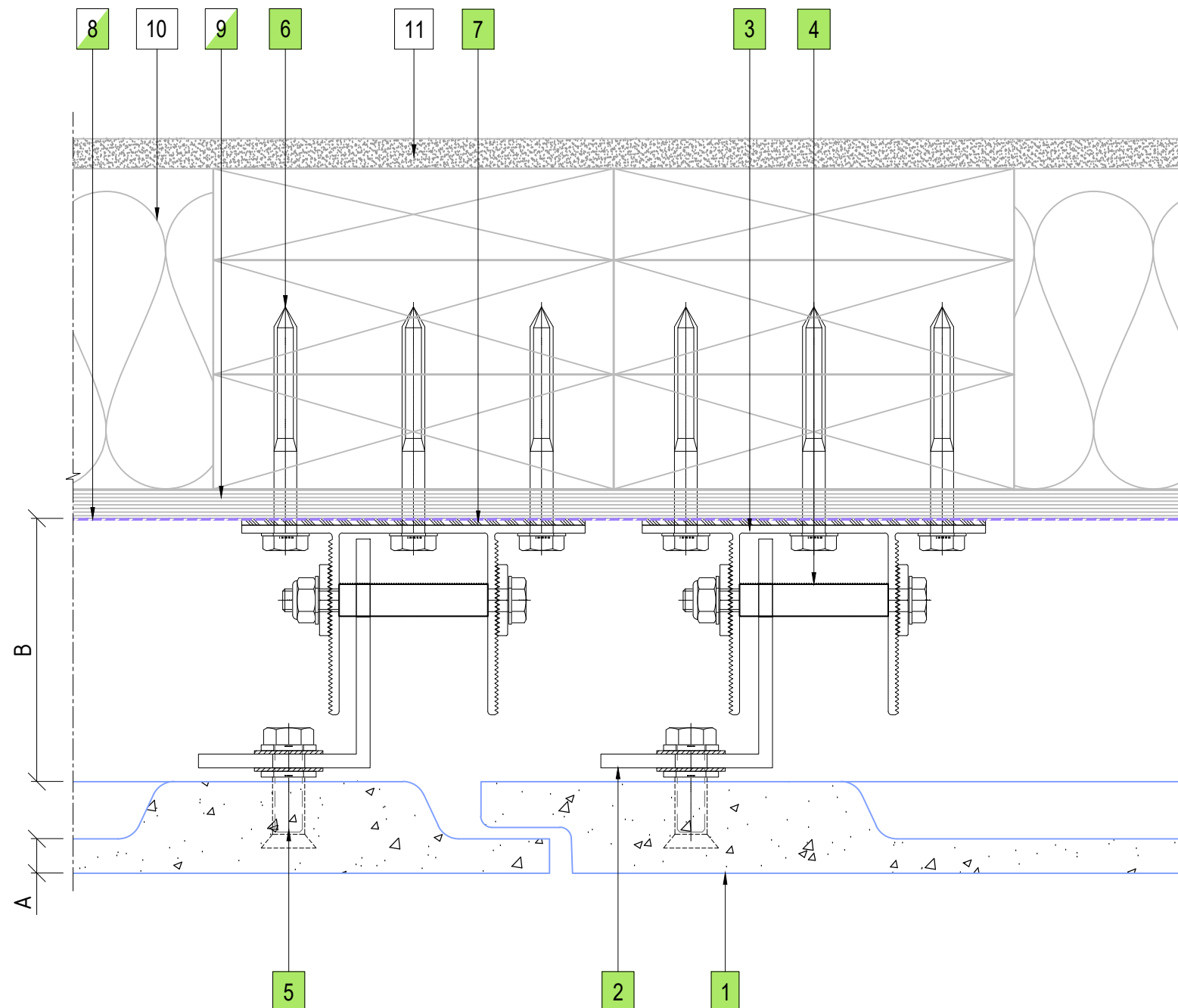
03

ENCLAD™ RAINSCREEN SYSTEMS

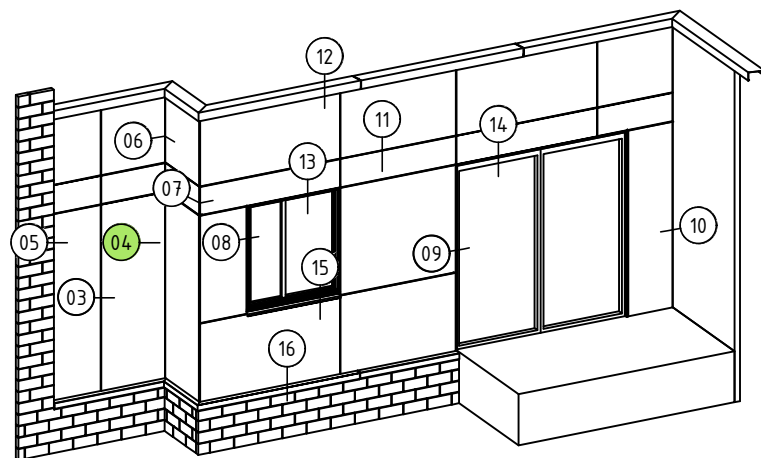


158 CENTRAL PARK DRIVE,
HENDERSON,
AUCKLAND 0610
NEW ZEALAND

P: +64 9 444 4944
www.thermosash.co.nz



03 VERTICAL PANEL JOINT DETAIL
ENCLAD™ GRC PANEL



04 PANEL MIDSPAN SUPPORT DETAIL

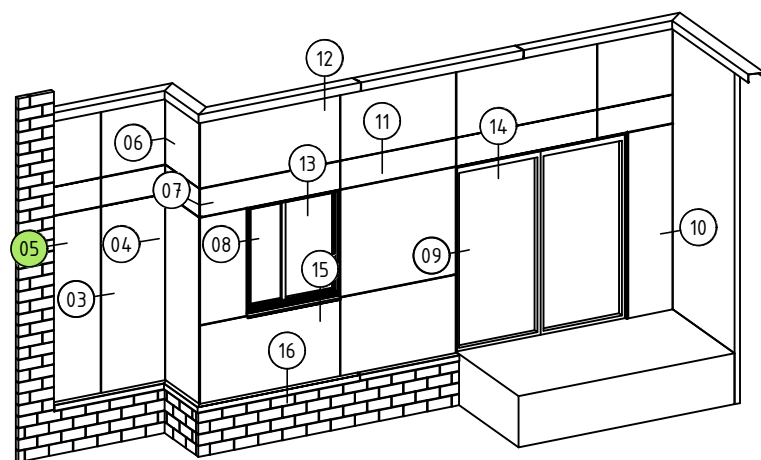
ENCLAD™ GRC PANEL

DISCLAIMER : THESE DETAILS ARE PROVIDED FOR INDICATIVE PURPOSES ONLY. CONSTRUCTION/SYSTEM DETAILS CAN VARY DEPENDING ON PROJECT SPECIFIC SPECIFICATION AND ENGINEERING REQUIREMENTS. THE DESIGNER IS RESPONSIBLE FOR ENSURING DETAILS SATISFY ALL NEW ZEALAND BUILDING CODE CLAUSES. THE DESIGNER IS RESPONSIBLE FOR ENSURING BUILDING WRAPS, FIRESTOPS AND INSULATION/SPECIFICATION COMPLY WITH MANUFACTURERS RECOMMENDATIONS AND NZBC REGULATIONS. REFER TO THERMOSHASH WEBSITE FOR FULL TERMS AND CONDITIONS.

A	ENCLAD™ GRC PANEL
B	* SYSTEM CAVITY (115mm MIN. - 140mm MAX.)
*	OTHER OPTIONS AVAILABLE (PROJECT SPECIFIC)

1	ENCLAD™ GRC PANEL
2	ENCLAD EN06 ALUMINIUM SUPPORT PROFILE
3	ENCLAD EN06 ALUMINIUM CHANNEL BRACKET
4	ENCLAD FIXING FOR HOOK (STAINLESS STEEL)
5	ENCLAD PANEL FIXING (STAINLESS STEEL)
6	ENCLAD HOST STRUCTURAL FIXING (STAINLESS STEEL)
7	ENCLAD THERMAL ISOLATION PAD
8	BUILDING WRAP / MEMBRANE (OPTION BY INSITE)
9	RIGID AIR BARRIER / SHEATHING BOARD (OPTION BY INSITE)
10	WALL INSULATION (BY OTHERS)
11	PLASTER BOARD (BY OTHERS)

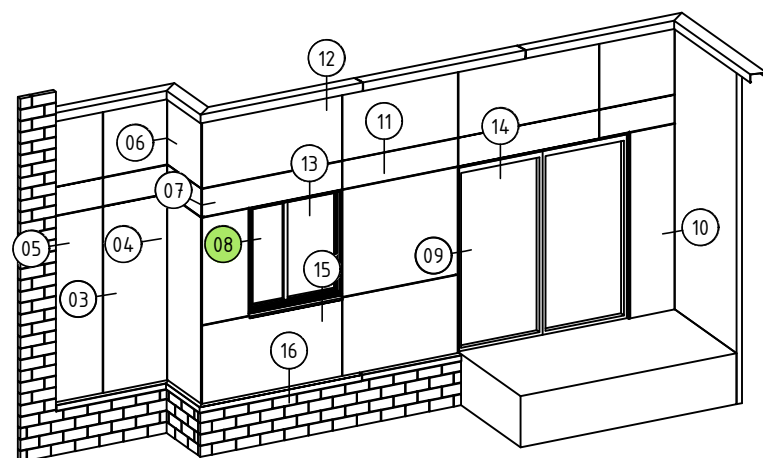
04



05 BRICKWALL ABUTMENT DETAIL
ENCLAD™ GRC PANEL

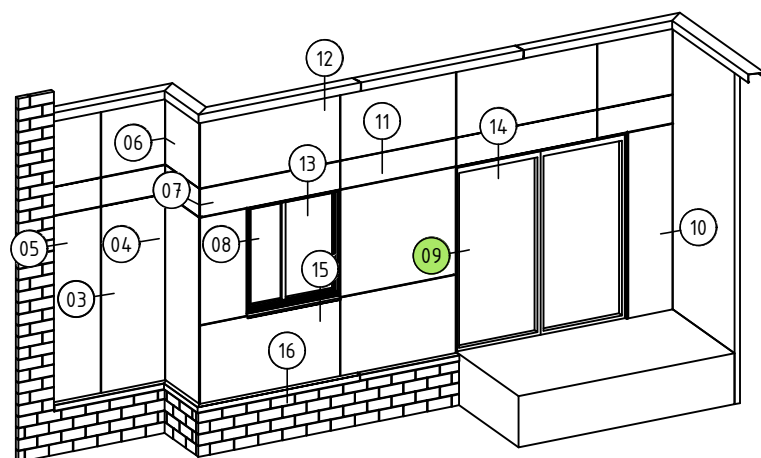
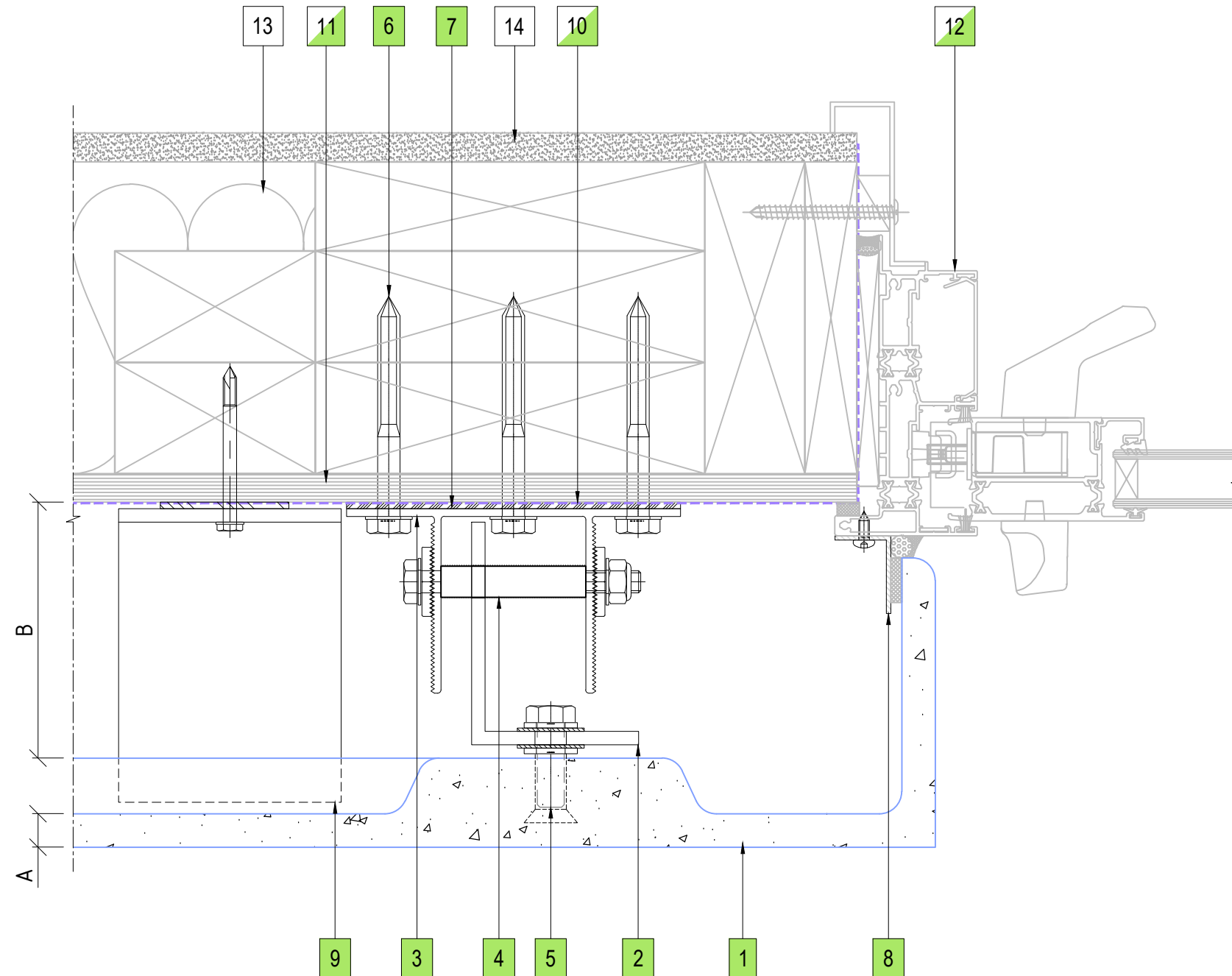
P: +64 9 444 4944
www.thermosash.co.nz

P: +64 9 444 4944
www.thermosash.co.nz



08 WINDOW JAMB DETAIL
ENCLAD™ GRC PANEL

DISCLAIMER : THESE DETAILS ARE PROVIDED FOR INDICATIVE PURPOSES ONLY. CONSTRUCTION/SYSTEM DETAILS CAN VARY DEPENDING ON PROJECT SPECIFIC SPECIFICATION AND ENGINEERING REQUIREMENTS. THE DESIGNER IS RESPONSIBLE FOR ENSURING DETAILS SATISFY ALL NEW ZEALAND BUILDING CODE CLAUSES. THE DESIGNER IS RESPONSIBLE FOR ENSURING BUILDING WRAPS, FIRESTOPS AND INSULATION/SPECIFICATION COMPLY WITH MANUFACTURERS RECOMMENDATIONS AND NZBC REGULATIONS. REFER TO THERMOSASH WEBSITE FOR FULL TERMS AND CONDITIONS.



09 DOOR JAMB DETAIL
ENCLAD™ GRC PANEL

LEGEND

A	ENCLAD™ GRC PANEL
B	* SYSTEM CAVITY (115mm MIN. - 140mm MAX.)
*	OTHER OPTIONS AVAILABLE (PROJECT SPECIFIC)

PARTS LIST

1	ENCLAD™ GRC PANEL
2	ENCLAD EN06 ALUMINIUM SUPPORT PROFILE
3	ENCLAD EN06 ALUMINIUM CHANNEL BRACKET
4	ENCLAD FIXING FOR HOOK (STAINLESS STEEL)
5	ENCLAD PANEL FIXING (STAINLESS STEEL)
6	ENCLAD HOST STRUCTURAL FIXING (STAINLESS STEEL)
7	ENCLAD THERMAL ISOLATION PAD
8	ENCLAD ALUMINIUM CLOSURE ANGLE
9	ENCLAD PANEL SUPPORTING BRACKET
10	BUILDING WRAP / MEMBRANE (OPTION BY INSITE)
11	RIGID AIR BARRIER / SHEATHING BOARD (OPTION BY INSITE)
12	ALUMINIUM DOORS, WINDOWS & REVEALS (OPTION BY INSITE)
13	WALL INSULATION (BY OTHERS)
14	PLASTER BOARD (BY OTHERS)

Cladding Type :

**ENCLAD™ GRC -
GLASS REINFORCED CONCRETE**

Support System :

ENCLAD™ EN06 - HOOK ON SECRET FIXED

Detail Description :

DOOR JAMB DETAIL (PLAN VIEW)

Scale @ A3 : 1:2.5

Rev. : NOV 2022

System # :

Detail # :

GRC-EN06-HOA-SF4

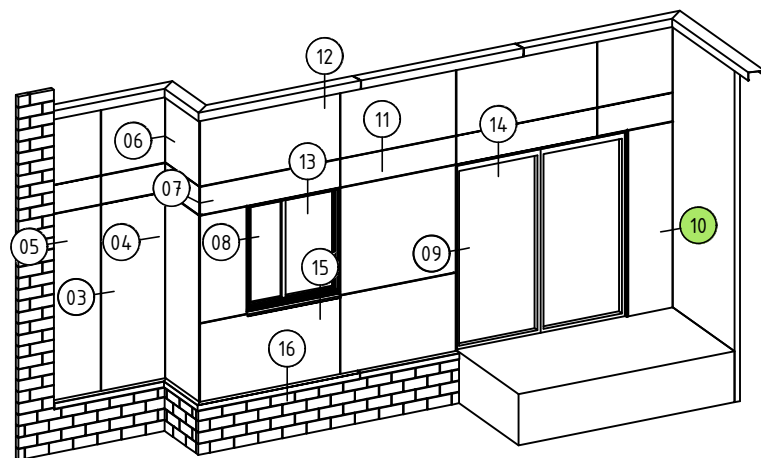
09

ENCLAD™ RAINSCREEN SYSTEMS



158 CENTRAL PARK DRIVE,
HENDERSON,
AUCKLAND 0610
NEW ZEALAND

P: +64 9 444 4944
www.thermosash.co.nz



10 CONCRETE WALL ABUTMENT DETAIL
ENCLAD™ GRC PANEL

COPYRIGHT : THESE DESIGNS, DETAILS AND/OR SPECIFICATIONS AND THE COPYRIGHT THEREIN, REMAIN THE PROPERTY OF THERMOSASH COMMERCIAL LIMITED.

DISCLAIMER : THESE DETAILS ARE PROVIDED FOR INDICATIVE PURPOSES ONLY. CONSTRUCTION/SYSTEM DETAILS CAN VARY DEPENDING ON PROJECT SPECIFIC SPECIFICATION AND ENGINEERING REQUIREMENTS. THE DESIGNER IS RESPONSIBLE FOR ENSURING DETAILS SATISFY ALL NEW ZEALAND BUILDING CODE CLAUSES. THE DESIGNER IS RESPONSIBLE FOR ENSURING BUILDING WRAPS, FIRESTOPS AND INSULATION/SPECIFICATION COMPLY WITH MANUFACTURERS RECOMMENDATIONS AND NZBC REGULATIONS. REFER TO THERMOSASH WEBSITE FOR FULL TERMS AND CONDITIONS.

LEGEND

A	ENCLAD™ GRC PANEL
B	* SYSTEM CAVITY (115mm MIN. - 140mm MAX.)
*	OTHER OPTIONS AVAILABLE (PROJECT SPECIFIC)

PARTS LIST

1	ENCLAD™ GRC PANEL
2	ENCLAD EN06 ALUMINIUM SUPPORT PROFILE
3	ENCLAD EN06 ALUMINIUM CHANNEL BRACKET
4	ENCLAD FIXING FOR HOOK (STAINLESS STEEL)
5	ENCLAD PANEL FIXING (STAINLESS STEEL)
6	ENCLAD HOST STRUCTURAL FIXING (STAINLESS STEEL)
7	ENCLAD THERMAL ISOLATION PAD
8	ENCLAD PANEL SUPPORTING BRACKET
9	BUILDING WRAP / MEMBRANE (OPTION BY INSITE)
10	RIGID AIR BARRIER / SHEATHING BOARD (OPTION BY INSITE)
11	WALL INSULATION (BY OTHERS)
12	PLASTER BOARD (BY OTHERS)

Cladding Type :

**ENCLAD™ GRC -
GLASS REINFORCED CONCRETE**

Support System :

ENCLAD™ EN06 - HOOK ON SECRET FIXED

Detail Description :

HORIZONTAL PANEL JOINT DETAIL (SECTION VIEW)

Scale @ A3 : 1:2.5

Rev. : NOV 2022

System # :

Detail # :	
------------	--

GRC-EN06-HOA-SF4

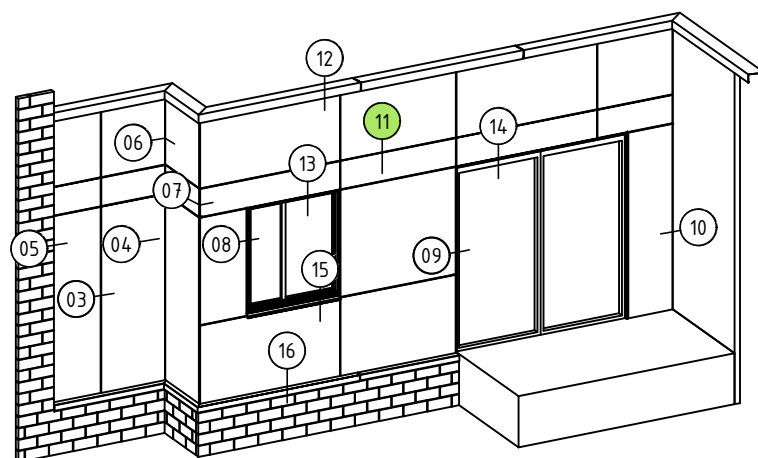
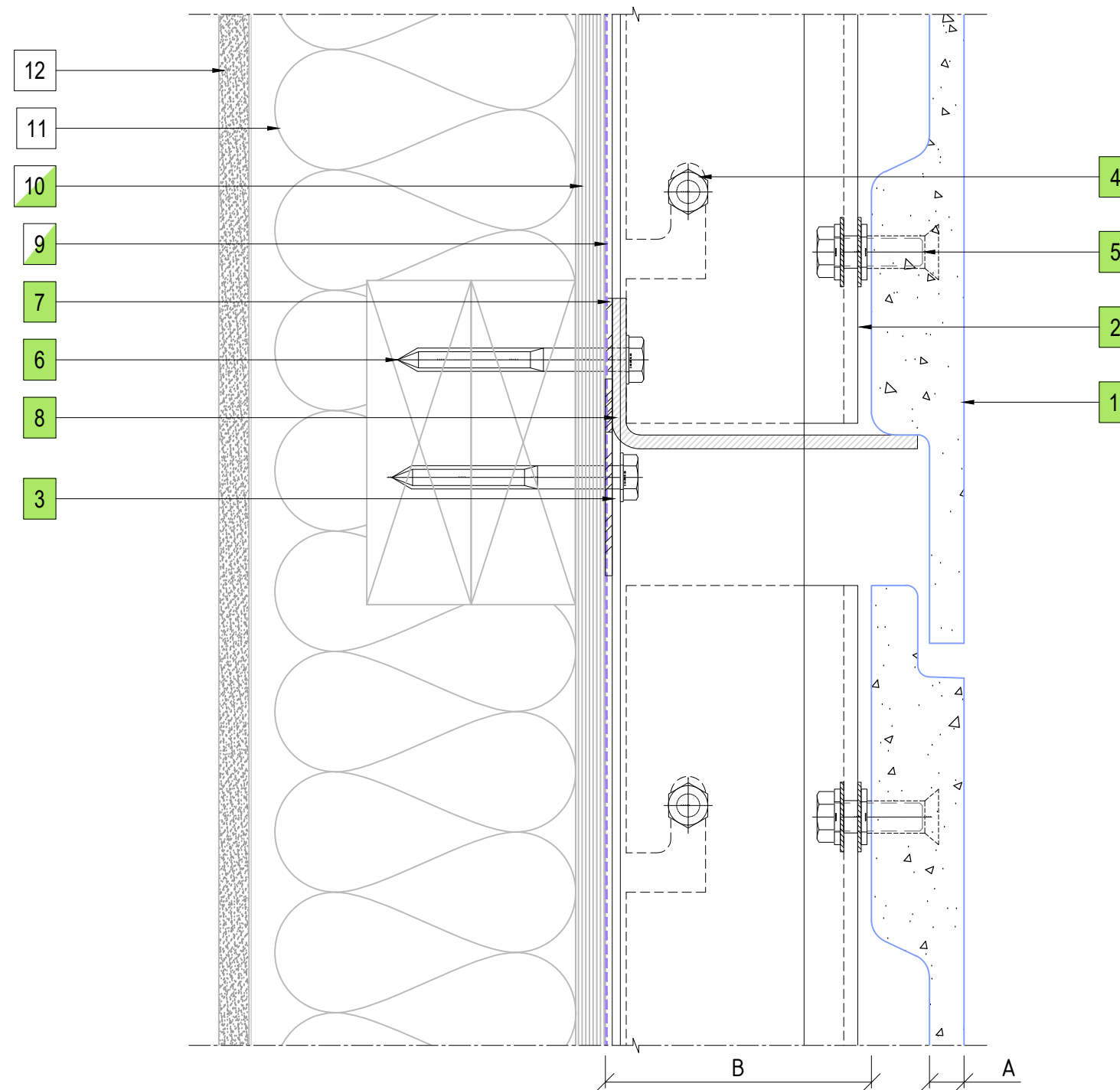
11

ENCLAD™ RAINSCREEN SYSTEMS



158 CENTRAL PARK DRIVE,
HENDERSON,
AUCKLAND 0610
NEW ZEALAND

P: +64 9 444 4944
www.thermosash.co.nz



11 HORIZONTAL PANEL JOINT DETAIL
ENCLAD™ GRC PANEL

LEGEND

A	ENCLAD™ GRC PANEL
B	* SYSTEM CAVITY (115mm MIN. - 140mm MAX.)
*	OTHER OPTIONS AVAILABLE (PROJECT SPECIFIC)

PARTS LIST

1	ENCLAD™ GRC PANEL
2	ENCLAD EN06 ALUMINIUM SUPPORT PROFILE
3	ENCLAD EN06 ALUMINIUM CHANNEL BRACKET
4	ENCLAD FIXING FOR HOOK (STAINLESS STEEL)
5	ENCLAD PANEL FIXING (STAINLESS STEEL)
6	ENCLAD HOST STRUCTURAL FIXING (STAINLESS STEEL)
7	ENCLAD THERMAL ISOLATION PAD
8	ENCLAD ALUMINIUM FLASHING
9	ENCLAD ALUMINIUM BRACKET
10	BUILDING WRAP / MEMBRANE (OPTION BY INSITE)
11	RIGID AIR BARRIER / SHEATHING BOARD (OPTION BY INSITE)
12	WALL INSULATION (BY OTHERS)
13	PLASTER BOARD (BY OTHERS)

Cladding Type :

**ENCLAD™ GRC -
GLASS REINFORCED CONCRETE**

Support System :

ENCLAD™ EN06 - HOOK ON SECRET FIXED

Detail Description :

PARAPET FLASHING DETAIL (SECTION VIEW)

Scale @ A3 : 1:2.5

Rev. : NOV 2022

System # :

Detail # :	
------------	--

GRC-EN06-HOA-SF4

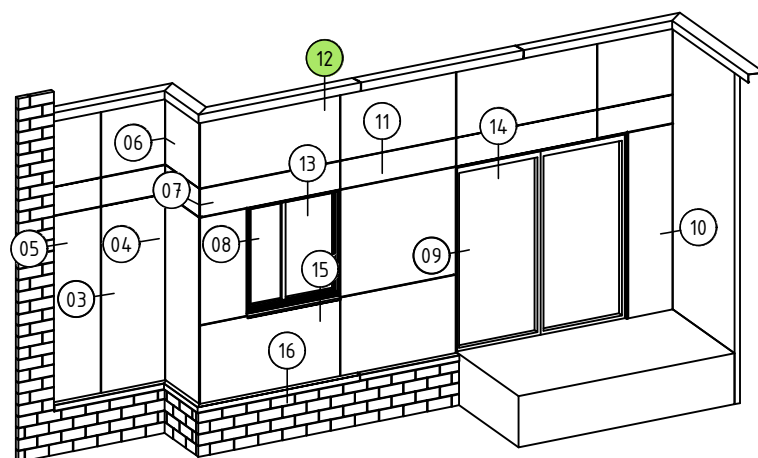
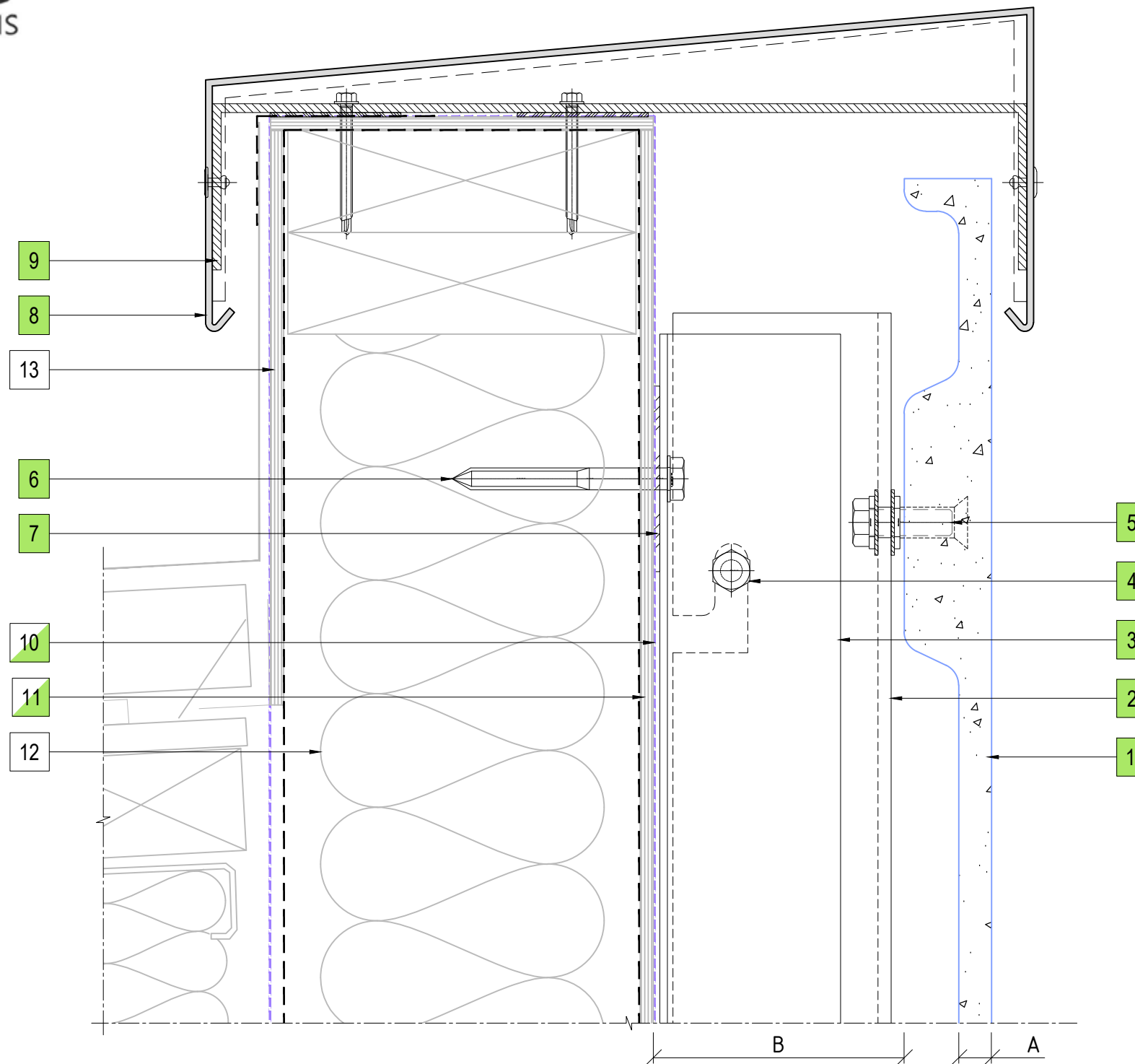
12

ENCLAD™ RAINSCREEN SYSTEMS

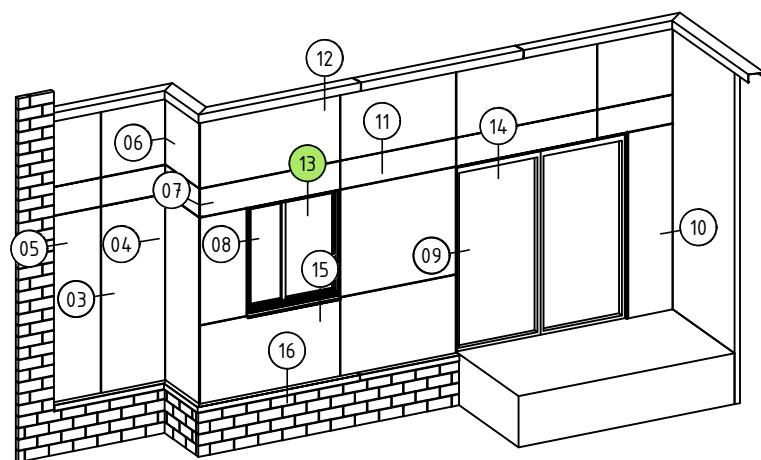
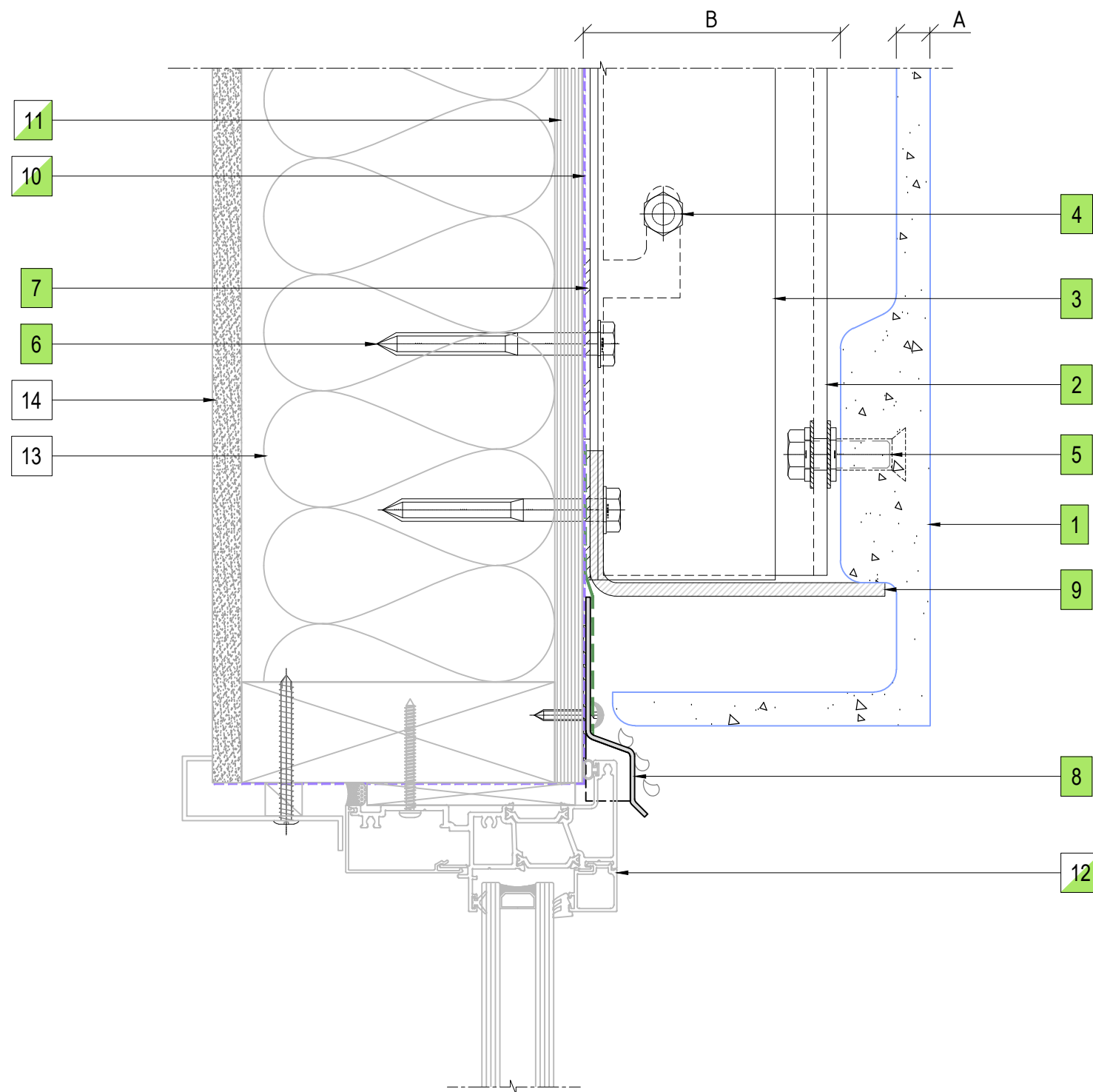


158 CENTRAL PARK DRIVE,
HENDERSON,
AUCKLAND 0610
NEW ZEALAND

P: +64 9 444 4944
www.thermosash.co.nz



12 PARAPET FLASHING DETAIL
ENCLAD™ GRC PANEL



13 WINDOW HEAD DETAIL
ENCLAD™ GRC PANEL

COPYRIGHT : THESE DESIGNS, DETAILS AND/OR SPECIFICATIONS AND THE COPYRIGHT THEREIN, REMAIN THE PROPERTY OF THERMOSASH COMMERCIAL LIMITED.

DISCLAIMER : THESE DETAILS ARE PROVIDED FOR INDICATIVE PURPOSES ONLY. CONSTRUCTION/SYSTEM DETAILS CAN VARY DEPENDING ON PROJECT SPECIFIC SPECIFICATION AND ENGINEERING REQUIREMENTS. THE DESIGNER IS RESPONSIBLE FOR ENSURING DETAILS SATISFY ALL NEW ZEALAND BUILDING CODE CLAUSES. THE DESIGNER IS RESPONSIBLE FOR ENSURING BUILDING WRAPS, FIRESTOPS AND INSULATION/SPECIFICATION COMPLY WITH MANUFACTURERS RECOMMENDATIONS AND NZBC REGULATIONS. REFER TO THERMOSASH WEBSITE FOR FULL TERMS AND CONDITIONS.

LEGEND

A	ENCLAD™ GRC PANEL
B	* SYSTEM CAVITY (115mm MIN. - 140mm MAX.)
*	OTHER OPTIONS AVAILABLE (PROJECT SPECIFIC)

PARTS LIST

1	ENCLAD™ GRC PANEL
2	ENCLAD EN06 ALUMINIUM SUPPORT PROFILE
3	ENCLAD EN06 ALUMINIUM CHANNEL BRACKET
4	ENCLAD FIXING FOR HOOK (STAINLESS STEEL)
5	ENCLAD PANEL FIXING (STAINLESS STEEL)
6	ENCLAD HOST STRUCTURAL FIXING (STAINLESS STEEL)
7	ENCLAD THERMAL ISOLATION PAD
8	ENCLAD ALUMINIUM FLASHING
9	ENCLAD PANEL SUPPORTING BRACKET
10	BUILDING WRAP / MEMBRANE (OPTION BY INSITE)
11	RIGID AIR BARRIER / SHEATHING BOARD (OPTION BY INSITE)
12	ALUMINIUM DOORS, WINDOWS & REVEALS (OPTION BY INSITE)
13	WALL INSULATION (BY OTHERS)
14	PLASTER BOARD (BY OTHERS)

Cladding Type :

**ENCLAD™ GRC -
GLASS REINFORCED CONCRETE**

Support System :

ENCLAD™ EN06 - HOOK ON SECRET FIXED

Detail Description :

WINDOW HEAD DETAIL (SECTION VIEW)

Scale @ A3 : 1:2.5

Rev. : NOV 2022

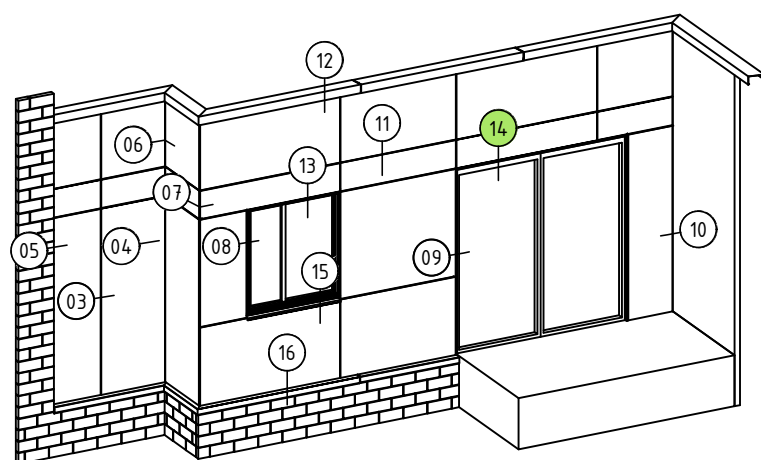
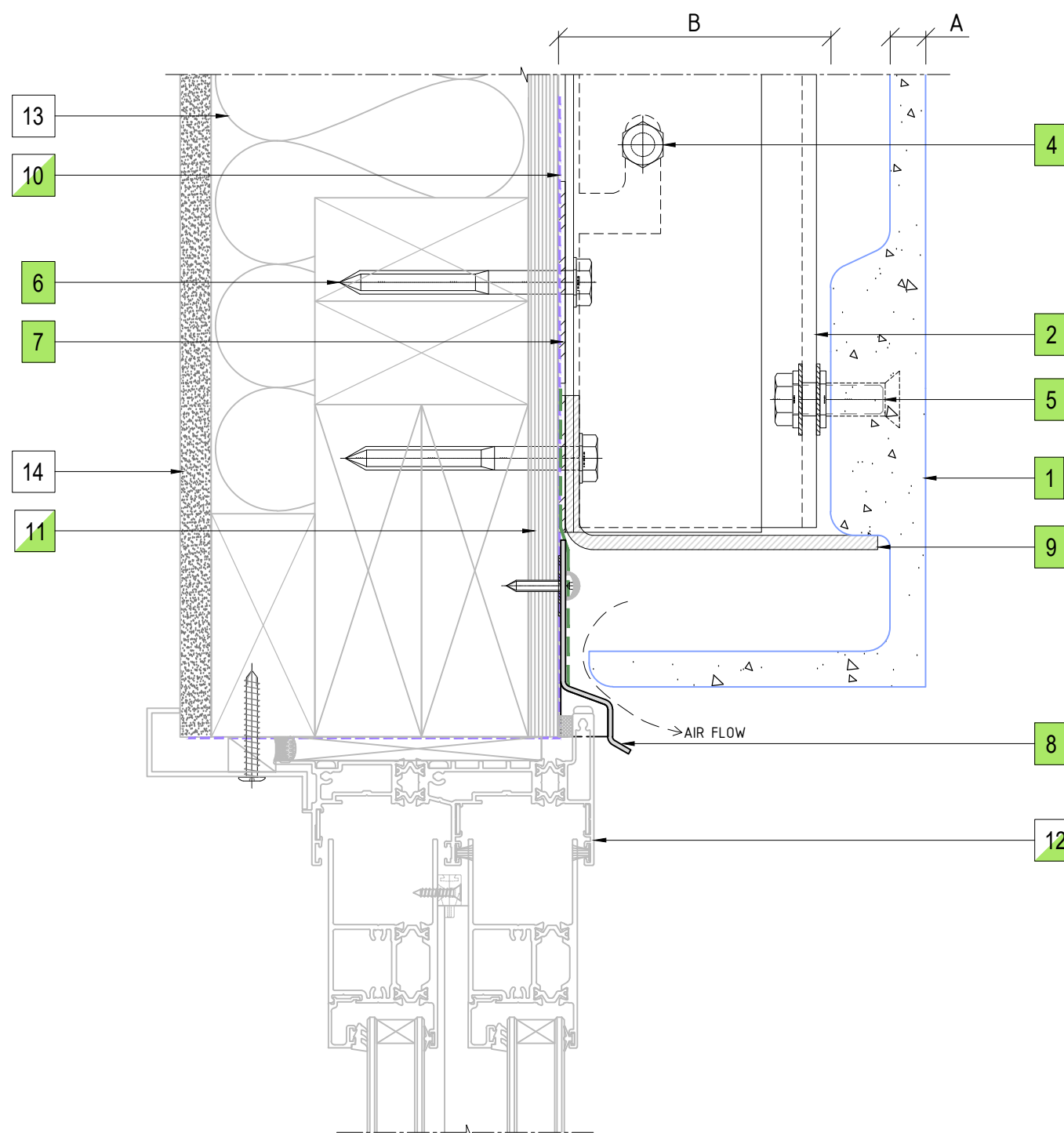
System # :

Detail # :

GRC-EN06-HOA-SF4

13

ENCLAD™ RAINSCREEN SYSTEMS



14 DOOR HEAD DETAIL
ENCLAD™ GRC PANEL

COPYRIGHT : THESE DESIGNS, DETAILS AND/OR SPECIFICATIONS AND THE COPYRIGHT THEREIN, REMAIN THE PROPERTY OF THERMOSASH COMMERCIAL LIMITED.

DISCLAIMER: THESE DETAILS ARE PROVIDED FOR INDICATIVE PURPOSES ONLY. CONSTRUCTION/SYSTEM DETAILS CAN VARY DEPENDING ON PROJECT SPECIFIC SPECIFICATION AND ENGINEERING REQUIREMENTS. THE DESIGNER IS RESPONSIBLE FOR ENSURING DETAILS SATISFY ALL NEW ZEALAND BUILDING CODE CLAUSES. THE DESIGNER IS RESPONSIBLE FOR ENSURING BUILDING WRAPS, FIRESTOPS AND INSULATION/SPECIFICATION COMPLY WITH MANUFACTURERS RECOMMENDATIONS AND NZBC REGULATIONS. REFER TO THERMOSASH WEBSITE FOR FULL TERMS AND CONDITIONS.

LEGEND

A	ENCLAD™ GRC PANEL
B	* SYSTEM CAVITY (115mm MIN. - 140mm MAX.)
*	OTHER OPTIONS AVAILABLE (PROJECT SPECIFIC)

PARTS LIST

1	ENCLAD™ GRC PANEL
2	ENCLAD EN06 ALUMINIUM SUPPORT PROFILE
3	ENCLAD EN06 ALUMINIUM CHANNEL BRACKET
4	ENCLAD FIXING FOR HOOK (STAINLESS STEEL)
5	ENCLAD PANEL FIXING (STAINLESS STEEL)
6	ENCLAD HOST STRUCTURAL FIXING (STAINLESS STEEL)
7	ENCLAD THERMAL ISOLATION PAD
8	ENCLAD ALUMINIUM FLASHING
9	ENCLAD PANEL SUPPORTING BRACKET
10	BUILDING WRAP / MEMBRANE (OPTION BY INSITE)
11	RIGID AIR BARRIER / SHEATHING BOARD (OPTION BY INSITE)
12	ALUMINIUM DOORS, WINDOWS & REVEALS (OPTION BY INSITE)
13	WALL INSULATION (BY OTHERS)
14	PLASTER BOARD (BY OTHERS)

Cladding Type :

**ENCLAD™ GRC -
GLASS REINFORCED CONCRETE**

Support System :

ENCLAD™ EN06 - HOOK ON SECRET FIXED

Detail Description :

DOOR HEAD DETAIL (SECTION VIEW)

Scale @ A3 : 1:2.5

Rev. : NOV 2022

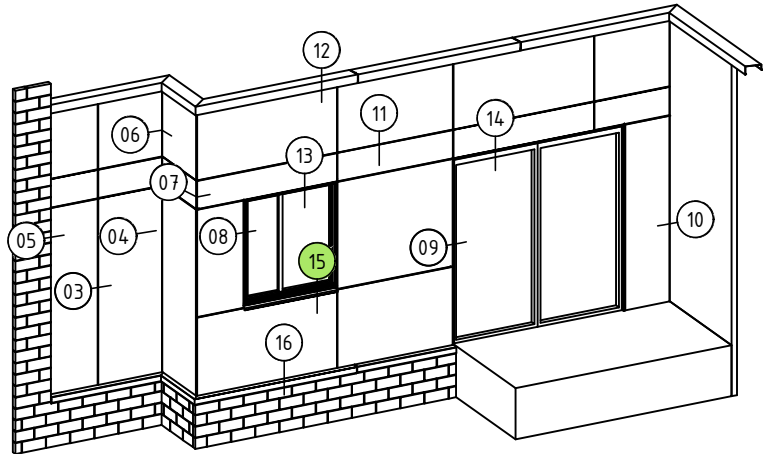
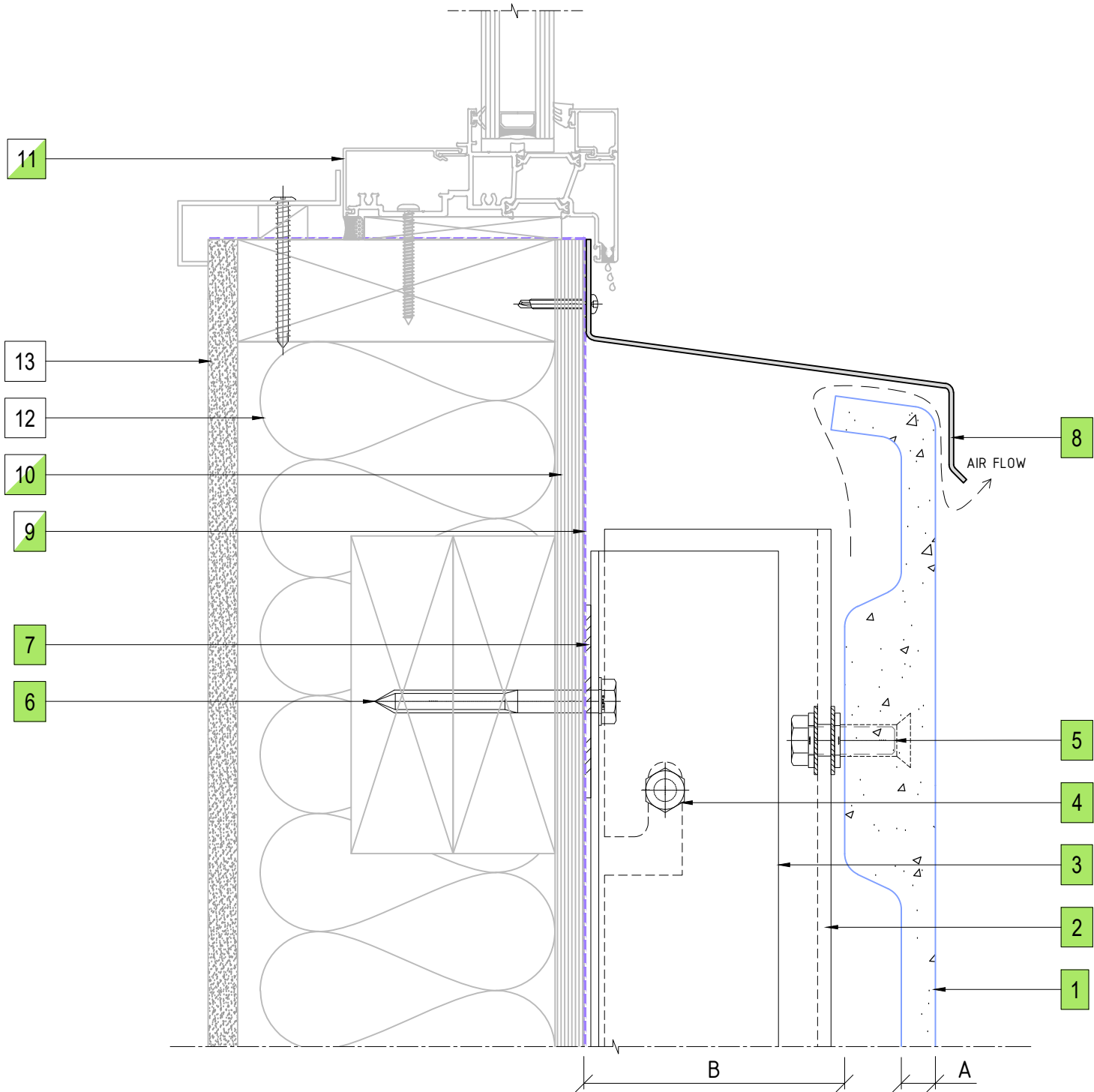
System # :

Detail # :	
------------	--

GRC-EN06-HOA-SF4

14

ENCLAD™ RAINSCREEN SYSTEMS



15 WINDOW SILL DETAIL
ENCLAD™ GRC PANEL

PART OF THE THERMOSASH GROUP COMPANIES :



COPYRIGHT : THESE DESIGNS, DETAILS AND/OR SPECIFICATIONS AND THE COPYRIGHT THEREIN, REMAIN THE PROPERTY OF THERMOSASH COMMERCIAL LIMITED.

DISCLAIMER : THESE DETAILS ARE PROVIDED FOR INDICATIVE PURPOSES ONLY. CONSTRUCTION/SYSTEM DETAILS CAN VARY DEPENDING ON PROJECT SPECIFIC SPECIFICATION AND ENGINEERING REQUIREMENTS. THE DESIGNER IS RESPONSIBLE FOR ENSURING DETAILS SATISFY ALL NEW ZEALAND BUILDING CODE CLAUSES. THE DESIGNER IS RESPONSIBLE FOR ENSURING BUILDING WRAPS, FIRESTOPS AND INSULATION/SPECIFICATION COMPLY WITH MANUFACTURERS RECOMMENDATIONS AND NZBC REGULATIONS. REFER TO THERMOSASH WEBSITE FOR FULL TERMS AND CONDITIONS.

LEGEND

A	ENCLAD™ GRC PANEL
B	* SYSTEM CAVITY (115mm MIN. - 140mm MAX.)
*	OTHER OPTIONS AVAILABLE (PROJECT SPECIFIC)

PARTS LIST

1	ENCLAD™ GRC PANEL
2	ENCLAD EN06 ALUMINIUM SUPPORT PROFILE
3	ENCLAD EN06 ALUMINIUM CHANNEL BRACKET
4	ENCLAD FIXING FOR HOOK (STAINLESS STEEL)
5	ENCLAD PANEL FIXING (STAINLESS STEEL)
6	ENCLAD HOST STRUCTURAL FIXING (STAINLESS STEEL)
7	ENCLAD THERMAL ISOLATION PAD
8	ENCLAD ALUMINIUM FLASHING
9	BUILDING WRAP / MEMBRANE (OPTION BY INSITE)
10	RIGID AIR BARRIER / SHEATHING BOARD (OPTION BY INSITE)
11	ALUMINIUM DOORS, WINDOWS & REVEALS (OPTION BY INSITE)
12	WALL INSULATION (BY OTHERS)
13	PLASTER BOARD (BY OTHERS)

Cladding Type :
**ENCLAD™ GRC -
GLASS REINFORCED CONCRETE**

Support System :
ENCLAD™ EN06 - HOOK ON SECRET FIXED

Detail Description :
WINDOW SILL DETAIL (SECTION VIEW)

Scale @ A3 : 1:2.5

Rev. : NOV 2022

System # :

GRC-EN06-HOA-SF4

Detail # :

15

ENCLAD™ RAINSCREEN SYSTEMS



158 CENTRAL PARK DRIVE,
HENDERSON,
AUCKLAND 0610
NEW ZEALAND
P: +64 9 444 4944
www.thermosash.co.nz

COPYRIGHT : THESE DESIGNS, DETAILS AND/OR SPECIFICATIONS AND THE COPYRIGHT THEREIN, REMAIN THE PROPERTY OF THERMOSASH COMMERCIAL LIMITED.

DISCLAIMER : THESE DETAILS ARE PROVIDED FOR INDICATIVE PURPOSES ONLY. CONSTRUCTION/SYSTEM DETAILS CAN VARY DEPENDING ON PROJECT SPECIFIC SPECIFICATION AND ENGINEERING REQUIREMENTS. THE DESIGNER IS RESPONSIBLE FOR ENSURING DETAILS SATISFY ALL NEW ZEALAND BUILDING CODE CLAUSES. THE DESIGNER IS RESPONSIBLE FOR ENSURING BUILDING WRAPS, FIRESTOPS AND INSULATION/SPECIFICATION COMPLY WITH MANUFACTURERS RECOMMENDATIONS AND NZBC REGULATIONS. REFER TO THERMOSASH WEBSITE FOR FULL TERMS AND CONDITIONS.

LEGEND

A	ENCLAD™ GRC PANEL
B	* SYSTEM CAVITY (115mm MIN. - 140mm MAX.)
*	OTHER OPTIONS AVAILABLE (PROJECT SPECIFIC)

PARTS LIST

1	ENCLAD™ GRC PANEL
2	ENCLAD EN06 ALUMINIUM SUPPORT PROFILE
3	ENCLAD EN06 ALUMINIUM CHANNEL BRACKET
4	ENCLAD FIXING FOR HOOK (STAINLESS STEEL)
5	ENCLAD PANEL FIXING (STAINLESS STEEL)
6	ENCLAD HOST STRUCTURAL FIXING (STAINLESS STEEL)
7	ENCLAD THERMAL ISOLATION PAD
8	ENCLAD ALUMINIUM FLASHING
9	ENCLAD PANEL SUPPORTING BRACKET
10	BUILDING WRAP / MEMBRANE (OPTION BY INSITE)
11	RIGID AIR BARRIER / SHEATHING BOARD (OPTION BY INSITE)
12	WALL INSULATION (BY OTHERS)
13	PLASTER BOARD (BY OTHERS)

Cladding Type :

**ENCLAD™ GRC -
GLASS REINFORCED CONCRETE**

Support System :

ENCLAD™ EN06 - HOOK ON SECRET FIXED

Detail Description :

BRICKWALL AT BASE DRIP DETAIL (SECTION VIEW)

Scale @ A3 : 1:2.5

Rev. : NOV 2022

System # :

Detail # :	
------------	--

GRC-EN06-HOA-SF4

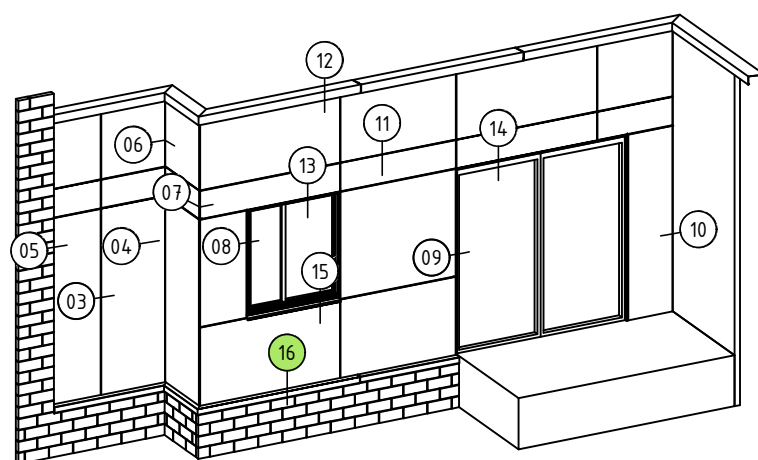
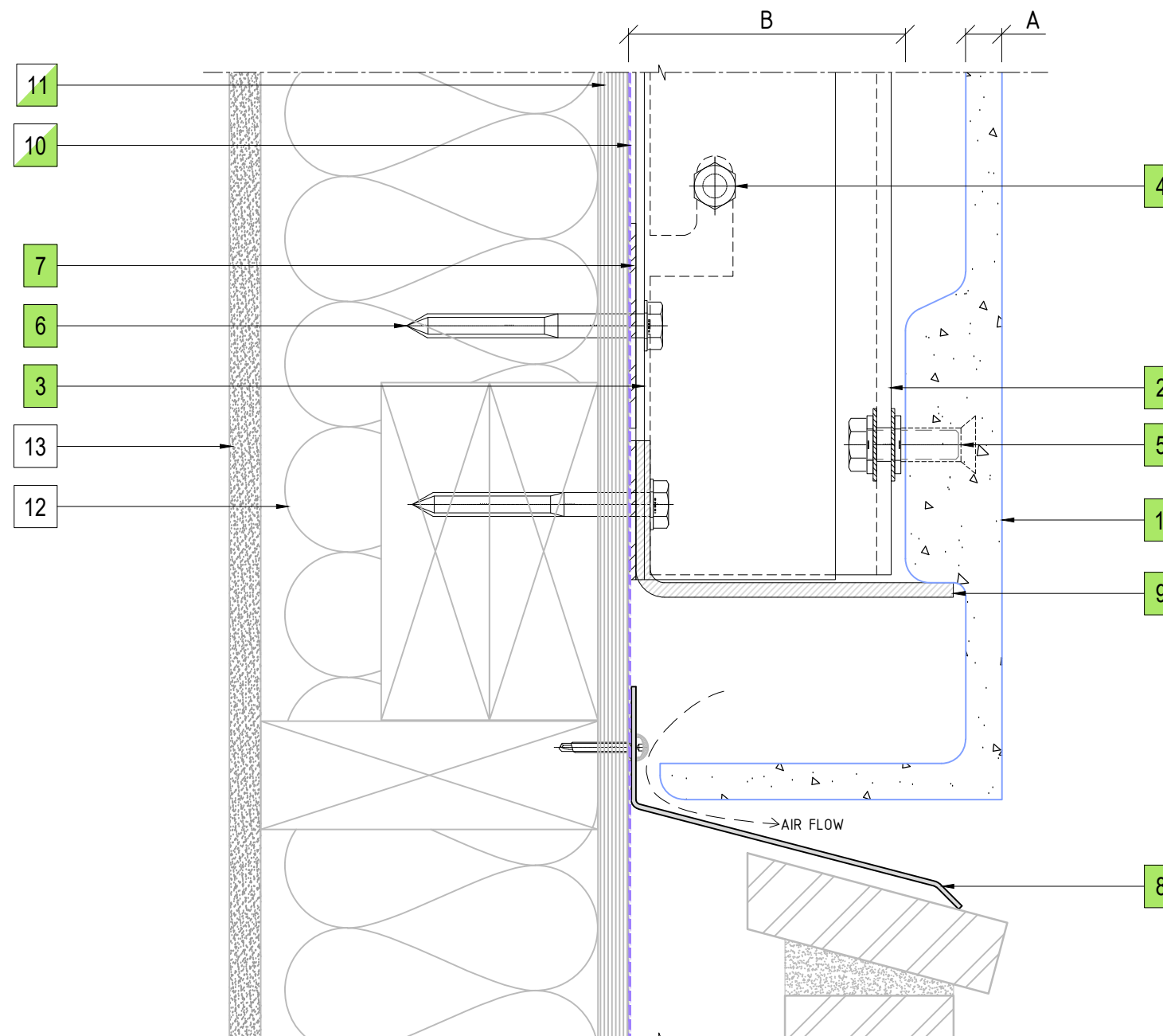
16

ENCLAD™ RAINSCREEN SYSTEMS



158 CENTRAL PARK DRIVE,
HENDERSON,
AUCKLAND 0610
NEW ZEALAND

P: +64 9 444 4944
www.thermosash.co.nz



16 BRICKWALL AT BASE DRIP DETAIL
ENCLAD™ GRC PANEL



17 CAVITY SET OUT
ENCLAD™ GRC PANEL

PART OF THE THERMOSASH GROUP COMPANIES :

COPYRIGHT : THESE DESIGNS, DETAILS AND/OR SPECIFICATIONS AND THE COPYRIGHT THEREIN, REMAIN THE PROPERTY OF THERMOSASH COMMERCIAL LIMITED.

DISCLAIMER: THESE DETAILS ARE PROVIDED FOR INDICATIVE PURPOSES ONLY. CONSTRUCTION/SYSTEM DETAILS CAN VARY DEPENDING ON PROJECT SPECIFIC SPECIFICATION AND ENGINEERING REQUIREMENTS. THE DESIGNER IS RESPONSIBLE FOR ENSURING DETAILS SATISFY ALL NEW ZEALAND BUILDING CODE CLAUSES. THE DESIGNER IS RESPONSIBLE FOR ENSURING BUILDING WRAPS, FIRESTOPS AND INSULATION/SPECIFICATION COMPLY WITH MANUFACTURERS RECOMMENDATIONS AND NZBC REGULATIONS. REFER TO THERMOSHASH WEBSITE FOR FULL TERMS AND CONDITIONS.

LEGEND

A	ENCLAD™ GRC PANEL
B	* SYSTEM CAVITY (158mm MIN. - 183mm MAX.)
*	OTHER OPTIONS AVAILABLE (PROJECT SPECIFIC)

Cladding Type :

**ENCLAD™ GRC -
GLASS REINFORCED CONCRETE**

Support System :

ENCLAD™ EN05-FF - HOOK ON SECRET FIXED

Detail Description :

CAVITY SETOUT (PLAN VIEW)

Scale @ A3 : 1:2.5

Rev. : NOV 2022

System # :

GRC-EN05-FF-HOA-SF4

Detail # :	
------------	--

17

ENCLAD™ RAINSCREEN SYSTEMS