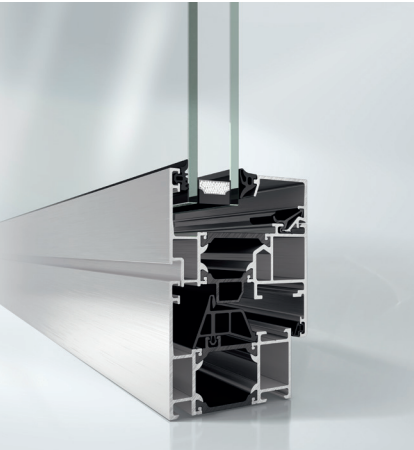


# Schüco AWS 65

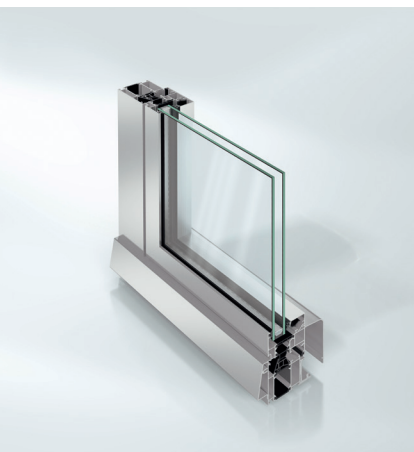
Aluminium window system



# Schüco AWS 65



Schüco window AWS 65



Schüco window AWS 65 PASK



Schüco window AWS 65.HI+

## The basic series with a comprehensive range for creative designs

The Schüco AWS 65 aluminium window system is an ideal standard system for a variety of window applications due to its broad range. Up to five design lines are available for creating attractive visual accents in both new-build and refurbishment projects. A wide range of profiles for narrow face widths and a high degree of transparency, as well as complete compatibility with the Schüco ADS door range allow sophisticated designs to be implemented effectively.

Schüco block systems create a particularly elegant window design without visible window vents. This attractive design option, where the outer frame completely covers the vent frame of the window, creates large transparent glazed areas due to its extremely narrow frame. With excellent sound insulation values and burglar resistance to RC3 (WK3), the Schüco window is both a reliable and versatile option.

In terms of convenience Schüco AvanTec fittings and the Schüco TipTronic mechatronic drive can provide contemporary ease of operation on request. In addition, there is a wide range of elegant handles to give the perfect finish to any of the design lines.

# Schüco AWS 65



Schüco window AWS 65 circumferential centre seal, exploded view

Product benefits		
Schüco AWS 65	Schüco AWS 65 BS	Schüco AWS 65 WF
<ul style="list-style-type: none"> <li>Standard aluminium window system for international requirements</li> <li>With glazing rebate insulation, values from 1.9 W(m<sup>2</sup>K) at 117mm can be achieved</li> <li>Wide range of profiles including the Schüco AWS 65 RL (Residential Line), Schüco AWS 65 SL (Soft Line) and the Schüco AWS 65 MC (Multi Contour) window design systems</li> <li>Available as an outward-opening window system with centre gasket and a variety of fittings</li> </ul>	<ul style="list-style-type: none"> <li>The block window system with concealed vent frames can be integrated seamlessly into Schüco facade systems</li> <li>Very narrow face widths from 67mm due to the concealed vent profile</li> <li>Comprehensive profile range with mullion profile face widths of up to 44mm, insert outer frames of up to 51mm, double vents and vent sash bars</li> </ul>	<ul style="list-style-type: none"> <li>Window facade with mullion/transom appearance</li> <li>Outside basic depth of 50mm</li> </ul>
Fabrication benefits		
<ul style="list-style-type: none"> <li>Compatible with the Schüco ADS/ADS HD door range</li> </ul>	<ul style="list-style-type: none"> <li>Can be used as a "floating window"</li> </ul>	<ul style="list-style-type: none"> <li>Comprehensive design options with cover cap versions from the Schüco FW 50+ facade system</li> </ul>

Technical data	AWS 65	AWS 65 BS	AWS 65 WF
U <sub>f</sub> values in W/(m <sup>2</sup> K) from	1.9	2.0	2.6
Basic depths in mm	65	65	65
Compatible with Schüco TipTronic	■	■	■
Sound insulation/standard DIN EN 20140 up to R <sub>w</sub> value in dB	45	45	43
Burglar resistance/standard DIN EN 1627 (Class)	RC2 (WK2)	RC2 (WK2)	RC2 (WK2)
Watertightness/standard DIN EN 12208 (Class)	9a	9a	9a
Air permeability, DIN 12207 (Class)	4	4	4
Wind load resistance, DIN 12210 (Class)	C5/B5	C5/B5	C5/B5

## Schüco AWS 65



As a leader in innovation for system-based construction, Schüco aluminium window systems combine the highest standards in terms of energy safety, security and design with market-specific requirements.

### Schüco International KG

[www.schueco.com](http://www.schueco.com)

[www.schueco.de](http://www.schueco.de)

Folgen Sie uns:  
Follow us:



### Schüco – System solutions for windows, doors and façades

Based in Bielefeld, the Schüco Group develops and sells system solutions for windows, doors and façades. With 6330 employees worldwide, the company strives to be the industry leader in terms of technology and service both now and in the future. In addition to innovative products for residential and commercial buildings, the building envelope specialist offers consultation and digital solutions for all phases of a building project – from the initial idea through to design, fabrication and installation. Schüco works with 10,000 fabricators and 30,000 architectural practices, as well as construction professionals who commission buildings around the world. Founded in 1951, the company is now active in more than 80 countries and achieved a turnover of 1.995 billion euros in 2021. For more information, visit [www.schueco.com](http://www.schueco.com)



The "Schüco" logo and other logos are protected in Germany and various international markets. We will provide detailed information upon request.

NZ04-2023/Printed in New Zealand  
We reserve the right to make technical changes and to correct errors. Products may differ from illustrations.





# Overview

	Schüco AWS 90 BS.SI+	Schüco AWS 90.SI+	Schüco AWS 75.SI+	Schüco AWS 75 BS.SI	Schüco AWS 75 BS.HI	Schüco AWS 75 WF.SI	Schüco AWS 65	Schüco AWS 65 BS	Schüco AWS 65 WF	Schüco AWS 60	Schüco AWS 60.HI	Schüco AWS 60 BS
<b>Energy</b>												
Thermally insulated							■	■	■	■		■
High Thermally insulated			■	■	■	■					■	
Suitable for passive houses	■	■										
U <sub>f</sub> -values in W/(m <sup>2</sup> K) from	0.71	0.8	0.92	1.3	1.3	1.4	1.9	2.0	2.6	1.9	1.7	2.1
Weighted sound insulation index R <sub>w</sub> in dB	47	49	48	49	45	49	47	44	44	45	45	43
<b>Design</b>												
Basic depth in mm	90	90	75	75	75	75	65	65	65	60	60	60
<b>Fittings</b>												
Schüco AvanTec, concealed	■	■	■	■	■	■	■	■	■	■	■	■
Schüco TipTronic, concealed	■	■	■	■	■	■	■	■	■	■	■	
<b>Design Options</b>												
RL (Residential Line)			■				■			■		
SL (Soft Line)			■				■			■		
MC (Multi Contour)							■			■	■	
BS (Block system)		■		■		■		■				■
WF (Window Facade)					■				■			
<b>Areas of Use</b>												
Facade insert unit	■	■	■	■		■	■	■		■	■	■
Window facade					■				■			
Floating window				■		■		■				■
Compatible Schüco ADS door system	■		■				■			■		

# Overview

	Schüco AWS 90 BS.SI+	Schüco AWS 90.SI+	Schüco AWS 75.SI	Schüco AWS 75 BS.SI	Schüco AWS 75 BS.HI	Schüco AWS 75 WF.SI	Schüco AWS 65	Schüco AWS 65 BS	Schüco AWS 65 WF	Schüco AWS 60	Schüco AWS 60.HI	Schüco AWS 60 BS
<b>Schüco Avan Tec</b>												
Side -hung (SH), turn/tilt (TT), bottom-hung (BH), tilt-before-turn (TbT)	■	■	■	■	■	■	■	■	■	■	■	■
Double-vent	■	■	■	■		■	■	■		■	■	■
Crank-operated turn/tilt vent												
Tilt/slide vent	■	■	■	■		■	■		■	■	■	■
Bottom-hung toplight	■	■	■	■	■	■	■	■	■	■	■	■
Outward-opening			■			■			■	■	■	
Side-hung, top-hung vent			■			■				■	■	
Horizontal and vertical pivot vent												
<b>Security</b>												
Burglar resistance in accordance with DIN EN 1627												
Schüco AvanTec WK1	■	■	■	■	■	■	■	■	■	■	■	■
Schüco AvanTec RC2 (WK2)	■	■	■	■	■	■	■	■		■	■	■
Schüco AvanTec RC3 (WK3)	■	■	■			■	■	■				
Schüco TipTronic WK1	■	■	■	■	■	■	■	■	■			
Schüco TipTronic RC2 WK2	■	■	■	■	■	■	■					
Monitoring of opening and closing, display	■	■	■	■	■	■	■	■	■	■	■	■
<b>Automation</b>												
Schüco TipTronic												
Turn / tilt fitting	■	■	■	■	■	■	■	■	■	■	■	■
Toplight	■	■	■	■	■	■	■	■	■	■	■	■
Outward opening			■				■					
Group control, bus automation	■	■	■	■	■	■	■	■	■			
Automatic night-time cooling, automatic ventilation	■	■	■	■	■	■	■	■	■			



# Thermosash

BUILDING ENVELOPE SOLUTIONS™

## SCHÜCO

PARTNER

### PRODUCTS

CANOPIES  
SHOPFRONT  
RAINSCREENS  
BALUSTRADES  
THERMAL BREAK  
DOORS & SLIDERS  
CHANNEL GLAZING  
MECHANICAL LOUVRES  
ROOFLIGHTS & ATRIUMS  
COMMERCIAL WINDOWS  
SOLARSHADING, LOUVRES & FINS  
TOTAL VISION - STRUCTURAL GLAZING  
UNITISED CURTAINWALL & PANELWALL FAÇADES  
SCHÜCO - HIGH END RESIDENTIAL WINDOWS & DOORS

#### Auckland

158-164 Central Park Drive,  
Henderson, Auckland 0610  
PO Box 100-340, North Shore,  
Auckland 0745, New Zealand  
P: +64 9 444 4944  
F: +64 9 444 4886

#### Wellington

17-19 Marine Parade, Petone,  
Lower Hutt 5012, New Zealand  
PO Box 38-645, Wellington Mail  
Centre, Lower Hutt 5045, New Zealand  
P: +64 4 939 4500  
F: +64 4 939 4499

#### Christchurch

12 Braeburn Drive  
Hornby, Christchurch 8040  
PO Box 313, Christchurch 8140,  
New Zealand  
P: +64 4 348 4004  
F: +64 4 348 4088

[www.thermosash.co.nz](http://www.thermosash.co.nz)