

THERMOSASH

# Security Systems

WINDOWS, DOORS AND FACADES



**Thermosash**  
BUILDING ENVELOPE SOLUTIONS™

**Thermosash Commercial Ltd**

158 Central Park Drive, Henderson  
Auckland 0610, New Zealand

[www.thermosash.co.nz](http://www.thermosash.co.nz)

## Thermosash Security Systems

Thermosash offer security windows, doors and facades that are architecturally aesthetic whilst providing custom engineered security-enhanced solutions to suit the demands of the project scope.

The low or medium to high performance human and structural impact products provide security from:

- Forced entry or exit
- Ballistic Resistance
- Blast Resistance
- Flying debris (cyclones)

Our security system solutions are suitable for:

- Mental health facilities
- Youth detention facilities
- Government buildings
- Courts
- Security Facilities
- Correctional facilities
- Data Centres
- Biocontainment facilities
- Consulates

## Our Unitised Systems offer the benefits of local off-site fabrication, modern construction techniques, and near limitless design possibilities...

bringing your boldest architectural visions to life whilst delivering practical benefits such as speed of installation, reduced risk, just-in-time site delivery, and single point warranty.

Shape the future of urban design and aesthetics with a high performance Thermosash Unitised Facade solution. We have five decades of building envelope experience to bring to your table.

## Our Aluminium is green to the core.

Thermosash is partnered with the lowest embodied carbon NZ-owned extruder in the world\*.

The combination of high recycled content and low carbon virgin material forms the super-low embodied carbon high quality extrusion that Thermosash uses.

\* Achieving Toitū Carbonreduce certification which far out performs the global average. (Independent audits to stringent European standard PAS 2050 are regularly undertaken, please contact us for the most up to date carbonreduce CO2e/kg of aluminium figures).

Thermosash recycles 100% of all metal waste products produced during manufacturing operations.

We exclusively use local powder coaters who have stringent chemical handling processes and reuse or responsibly dispose of all waste powder.



**Mason Clinic WDHB**  
AUCKLAND



**Wiri Prison**  
AUCKLAND



**Mt Eden Correctional Facility** AUCKLAND

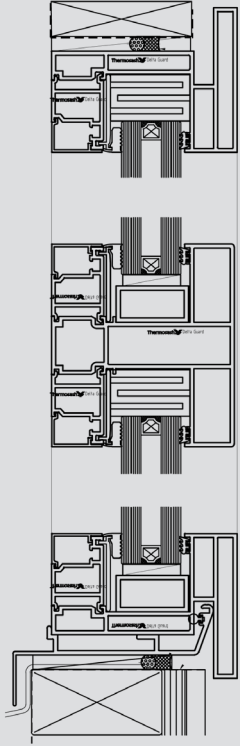
# LOW TO MEDIUM SECURITY WINDOWS

## DELTAGUARD™

Thermosash DelatGuard™ is a security window system developed for low to medium security human and physical structural impact project requirements.

A specifically engineered frame and combined glass suite offering correctional facilities, youth detention, acute and forensic mental health facilities and data centre projects the peace of mind on entry and exit restriction and ballistic and blast control - offering protection to those in the building.

Please Note: DeltaGuard™ is not intended for high security protection where we recommend to use SÄLZER (page 4) for medium to high end security, ballistic, intruder and blast protection.



Mason Clinic E Tui Tanekaha, Auckland (for mentally disabled offenders) - the windows provide security and offer a domestic aesthetic to the building.

### KEY FEATURES

- Reinforced frame to take high impact internal loading, external loading or both.
- Designed to mitigate frame parts converting to weapons
- Ability to quickly switch out primary glass if damaged to reduce time a room is unoccupied where necessary
- Glazing pocket designed to accommodate varying glass thickness to meet projects needs
- Glazing options include; polycarbonate, Glass or IGU
- Anti-ligature internal design
- Domestic / residential non-institutional aesthetic.
- Tested for tool damage / destruction - intrusion resistance.
- Each system is specifically engineered for your project's needs
- Options available to provide security to restrict transfer of contraband



Wiri Prison, Auckland - security windows with bespoke sash.



Youth Justice, Christchurch - windows installed with specialist security glass.



Mt Eden Prison gate house, Auckland - security glass facade

# HIGH PERFORMANCE SECURITY SÄLZER

For more than four decades SÄLZER have specialised in building security systems, delivering specifically designed and constructed products such as doors, windows, facades and guardhouses to provide diverse security solutions for customers worldwide.

Thermosash is the exclusive New Zealand Schüco Partner. In 2018 SÄLZER became part of Schüco. This partnership allows us to offer these exceptional high-end security solutions for commercial and residential buildings within New Zealand. All SÄLZER security products that we offer will be designed and manufactured by SÄLZER, in Germany, with tried and tested methodologies, high-end quality and certified international standards, and will be installed in New Zealand by Thermosash to exacting requirements.



## SÄLZER PRODUCTS ARE TESTED FOR SECURITY PERFORMANCE

SÄLZER windows, doors and facades are rigorously tested according to international standards. They can be adapted to integrate into the building envelope and are available in graduated security classifications against various threat scenarios:

- Forced entry and vandalism resistance
- Breakout resistance from the inside and from the outside
- Bullet Resistance - protecting human lives against ballistic attacks from a variety of weapons and ammunition
- Explosion and blast resistance - a security solution can be optimally adapted to individual explosive threat scenarios.

## HIGH PERFORMANCE SECURITY WINDOWS

The SÄLZER window range offers aluminium or steel frames with narrow profile face widths designed to provide safety and the ability to integrate extensive and multi-function glazing.

Viewed from the outside they do not look like heavy duty secure elements manufactured to withstand potential threats. Functionally the windows can offer ventilation, thermal insulation, and natural daylight and can be designed to meet the overall architectural intent of the building project.



## HIGH PERFORMANCE SECURITY DOORS

The security doors by SÄLZER are adaptable to meet varied building envelope requirements, whether integrating with glazed curtain walling or an architectural residential building facade.

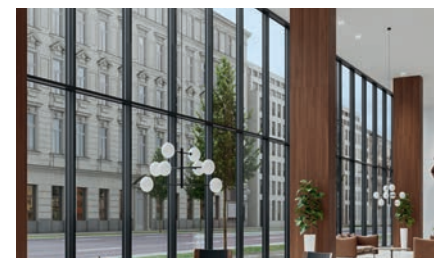
Operating comfort, style and security level are all considered as part of the design process. The doors can integrate automated fittings, access control units and escape door technology.



## HIGH PERFORMANCE SECURITY FACADES

The high performance facade offering discrete security with narrow profiles and expansive glazing is based on the Schüco FWS system - combining design elegance with high security.

This facade system allows for insert windows (inward or outward opening, tilt-turn, bottom hung casement), insert doors (hinged or sliding), security skylights and security access systems.



## HIGH PERFORMANCE SECURITY GUARD HOUSES

SÄLZER has modular systems for security guard houses, booths and checkpoints developed through testing and certification.

The modules can be configured by selecting the doors, windows, facade and roof requirements, and choosing the level of security necessary for each.





SÄLZER high performance security facades offer design elegance with blast resistant protection. The system allows for insert windows (inward or outward opening, tilt turn, bottom hung casement), hinged or sliding doors, security skylights and security access systems.



SÄLZER security doors can integrate automated fittings, access control units and escape door technology.

# OUR BRANCHES

## AUCKLAND

158-164 Central Park Drive  
Auckland 0610, New Zealand  
PO BOX 100-340 North Shore,  
Auckland 0745, New Zealand  
09 444 4944

## WELLINGTON

17-19 Marine Parade, Petone,  
Lower Hutt 5012, New Zealand  
PO BOX 38-645 Wellington Mail Centre,  
Lower Hutt 5045 New Zealand  
04 939 4500

## LEVIN

13 Enterprise Drive,  
Levin 5571, New Zealand  
PO BOX 38-645 Wellington Mail Centre,  
Lower Hutt 5045 New Zealand  
06 949 1717

## CHRISTCHURCH

12 Braeburn Drive  
Hornby, Christchurch 8042  
PO BOX 313, Christchurch 8140  
New Zealand  
03 348 4004

[www.thermosash.co.nz](http://www.thermosash.co.nz)  
[info@thermosash.co.nz](mailto:info@thermosash.co.nz)

Thermosash are members of:



Brochure version November 2024

