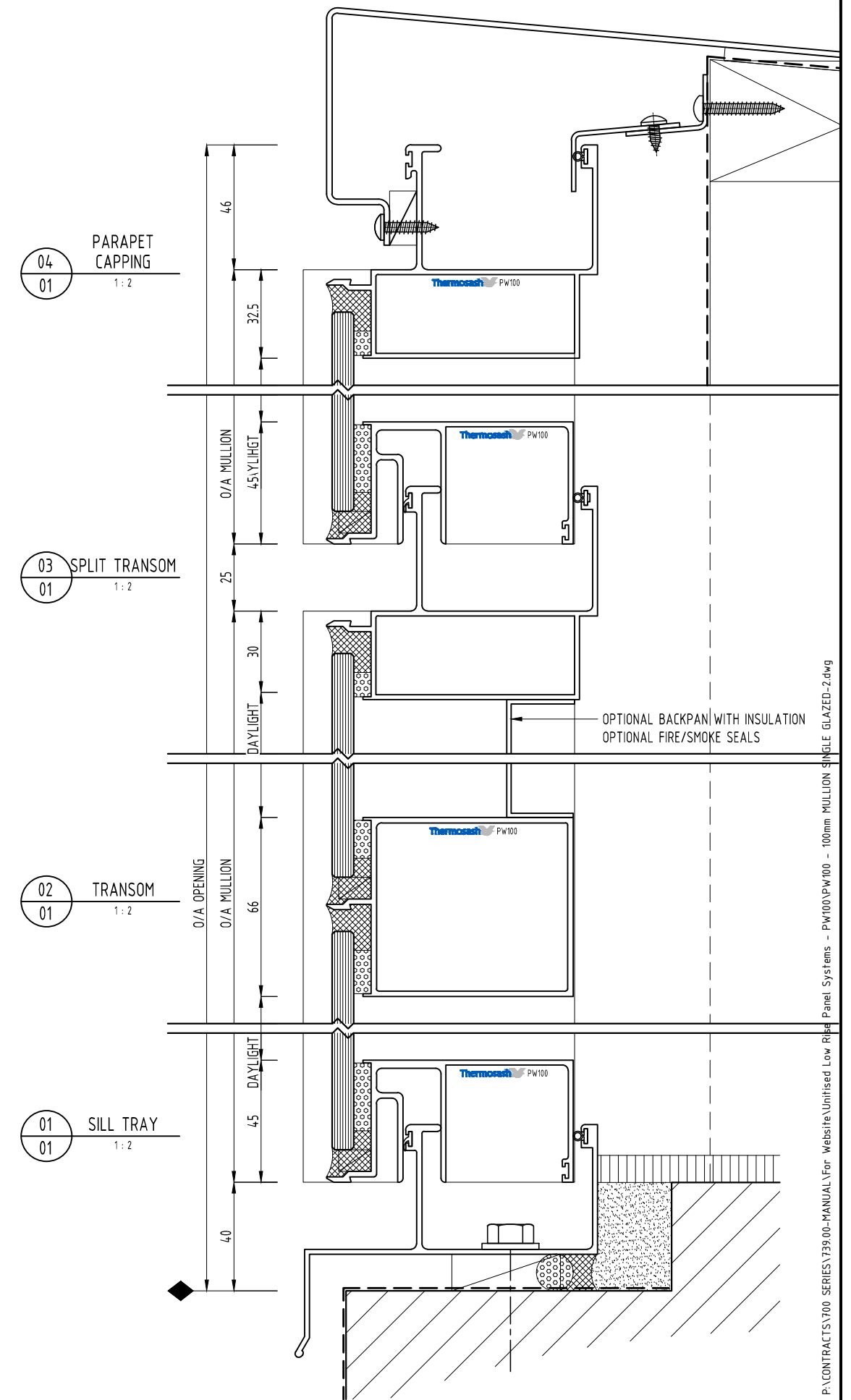
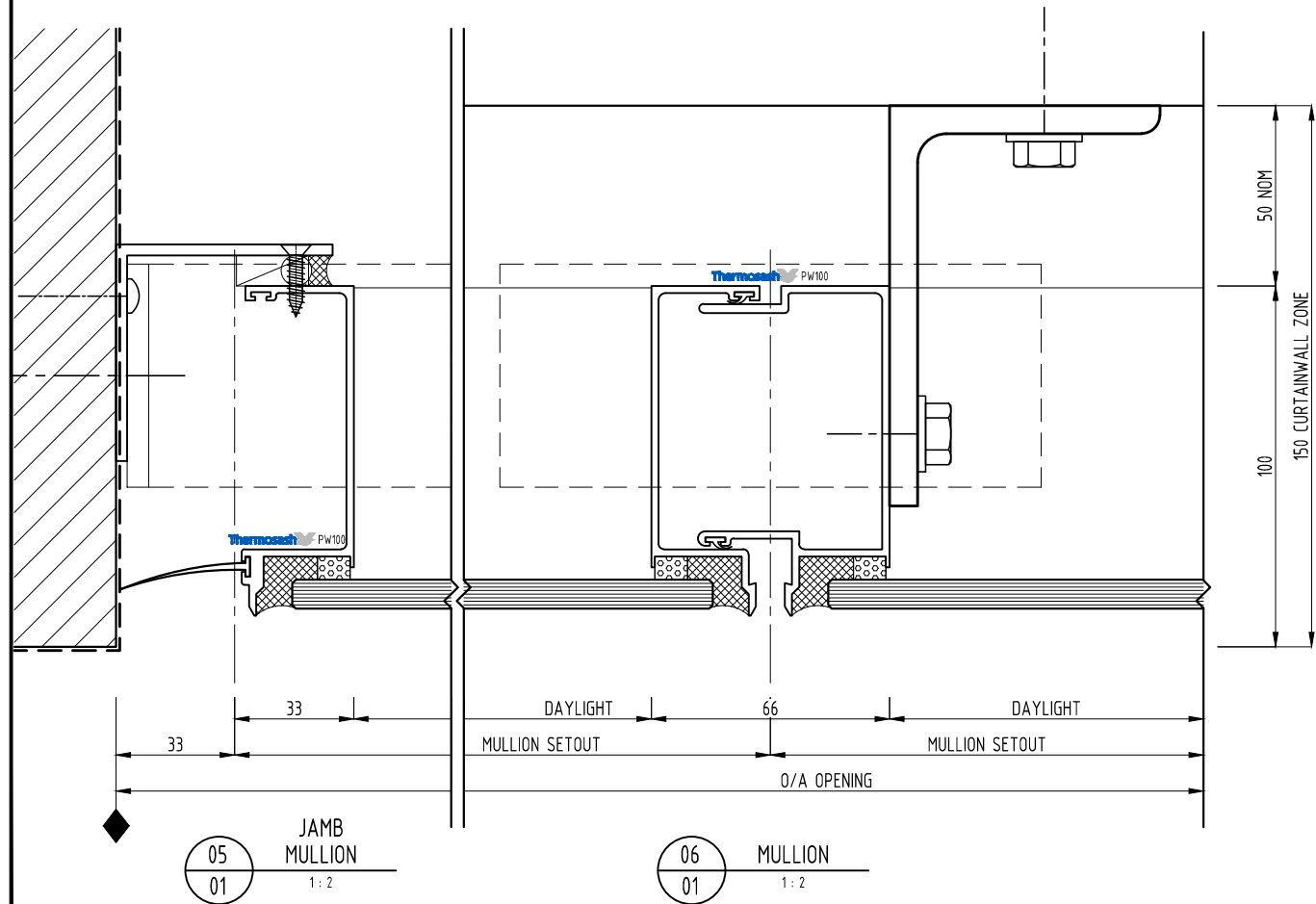
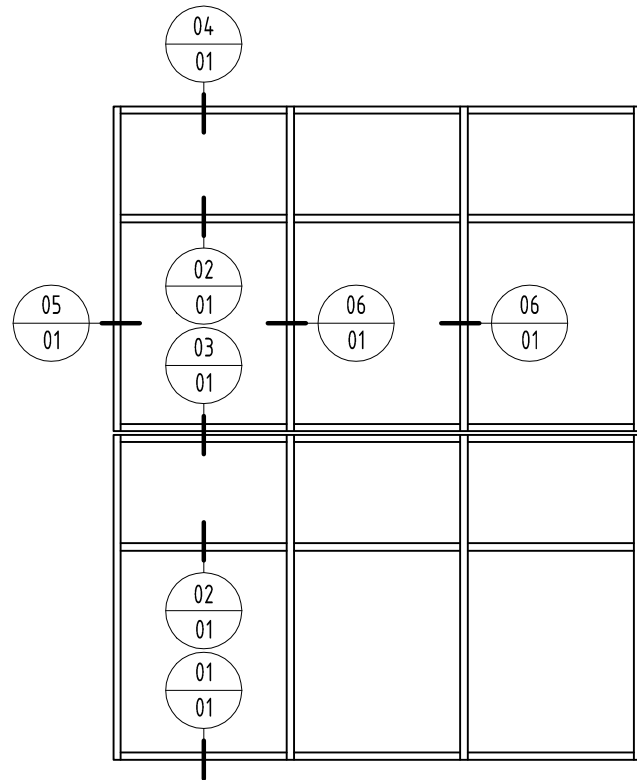


NOTES:
 1) DRAWING TO BE USED IN CONJUNCTION WITH 'MASTERSPEC' (4211)
 2) WINDOW SYSTEMS REQUIRE SPECIFIC DESIGN DEPENDING ON SPANS, WIND-LOADS, BUILDING CONDITIONS, ETC.
 3) INSIDE GLAZE, INTERNAL REINFORCEMENT AND SEISMIC FRAME OPTIONS AVAILABLE

GLAZING: GLASS THICKNESS TO SUIT REQUIREMENTS
 HARDWARE: STANDARD HARDWARE OPTIONS
 FINISHES: POWDER-COAT / ANODISED / PVF²



SYSTEM : PW100 UNITISED LOWRISE PANEL SYSTEM	TYPE : 100mm MULLION SINGLE GLAZED	SCALE: 1:2 @ A3	DATE: Dec-12	<p>Thermosash BUILDING ENVELOPE SOLUTIONS™</p>
www.thermosash.co.nz ~ AUCKLAND: (09)444-4944 ~ WELLINGTON: (04)939-4500 ~ CHRISTCHURCH: (03)348-4004		PAGE: PW100-01		

P:\CONTRACTS\700 SERIES\739.00-MANUAL\For Website\Utilised For Panel Systems - PW100\PW100 - 100mm MULLION SINGLE GLAZED-2.dwg