



**Thermosash**   
BUILDING ENVELOPE SOLUTIONS™

Thermoplank examples

# Thermoplank

Thermoplank is extruded aluminium unitised planking which we engineer and manufacture to be installed as rainscreen, or for integration into our PW1000 Unitised High Performance Curtainwall System.

To match the aesthetic of terracotta or porcelain tiles, we can use a special matt textured powdercoat finish. Thermoplank can mimic the appearance of large format tiles, baguettes, louvres and corrugation,



Taranaki Base Hospital Extension - unitised aluminium planking integrated into PW1000 High Performance Unitised Curtainwall.



Factory extruded and folded aluminium plank.



Aluminium planking unitised panels with end caps, stacked on factory crates ready for transport.



University of Auckland B201 - unitised aluminium planking integrated with PW1000 HP Unitised Curtainwall delivers an energy efficient envelope.



AUT M1 Mana Hauora Building - unitised aluminium planking provided a lightweight alternative to terracotta due to the floor spans on this project.



University of Auckland B201 - unitised aluminium planking integrated.



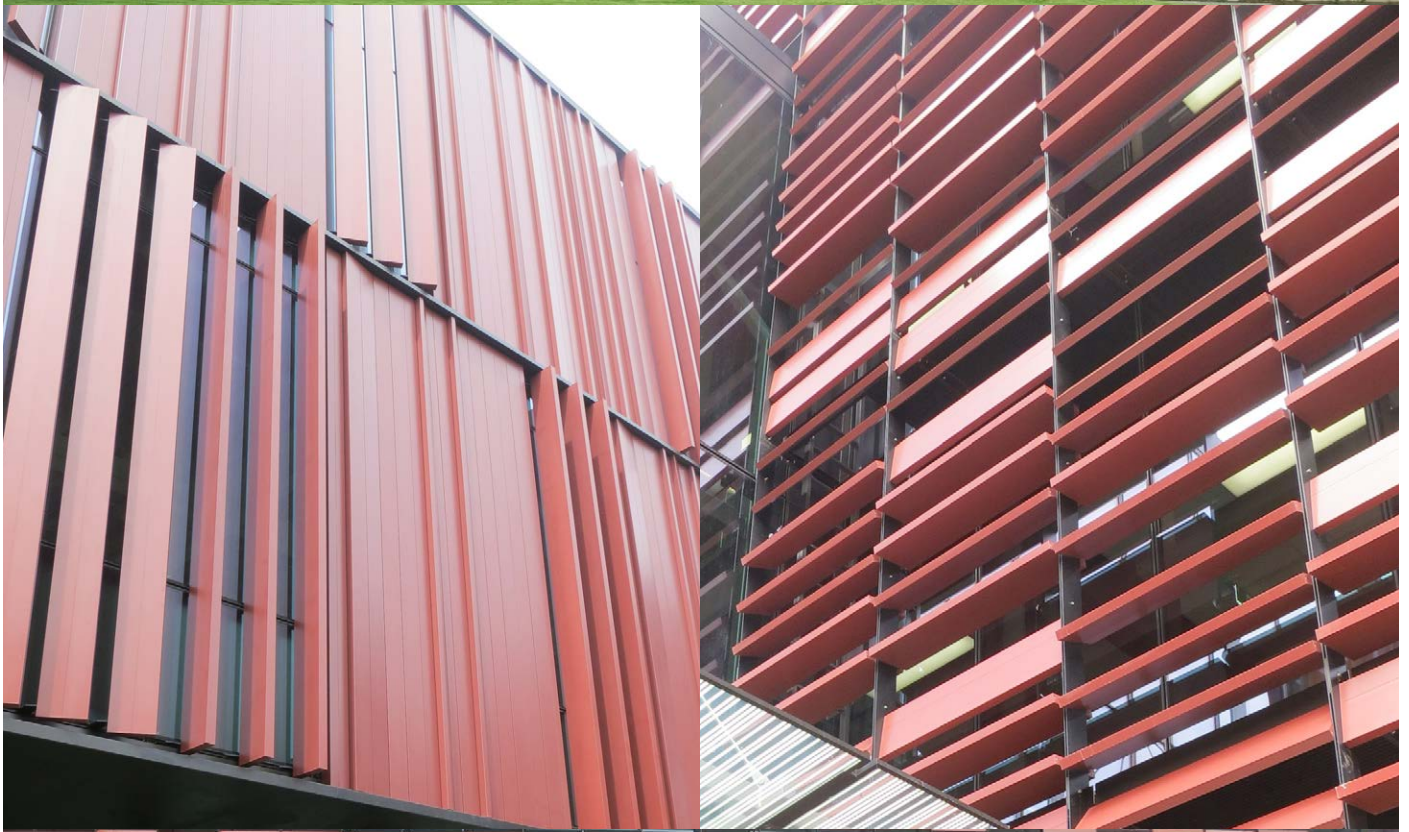
Massey Innovation Complex, Auckland - unitised extruded aluminium plank integrated with PW1000 HP Unitised Curtainwall.



Te Ao Nui Building (IL4), Palmerston North - extruded aluminium plank vertical cladding.

## AUT M1 Mana Hauora Building

Unitised aluminium planking provided a lightweight alternative to terracotta due to the floor spans on this project.



## Taranaki Base Hospital Extension

Unitised aluminium planking integrated into PW1000 High Performance Unitised Curtainwall.



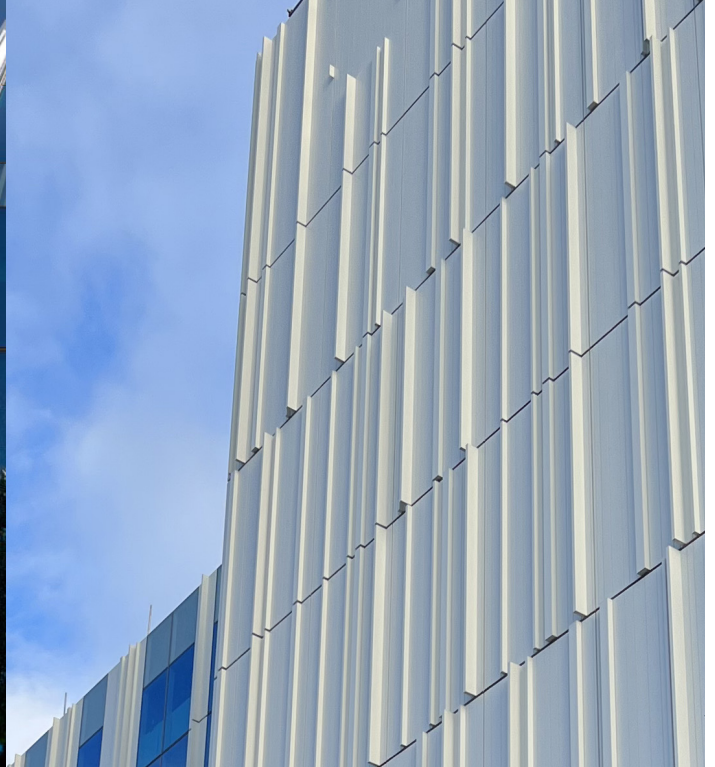
## University of Auckland A1

Unitised aluminium planking integrated into PW1000 High Performance Unitised Curtainwall.



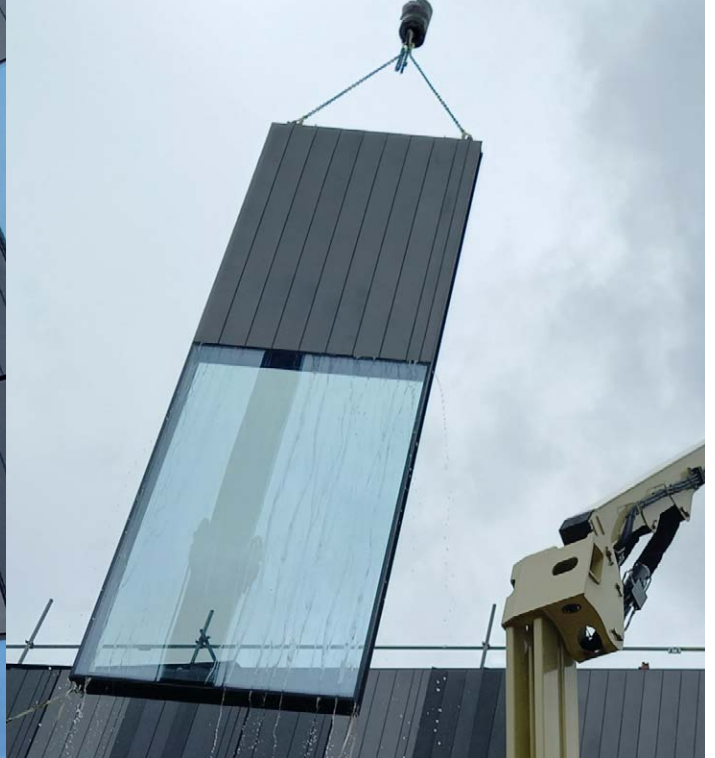
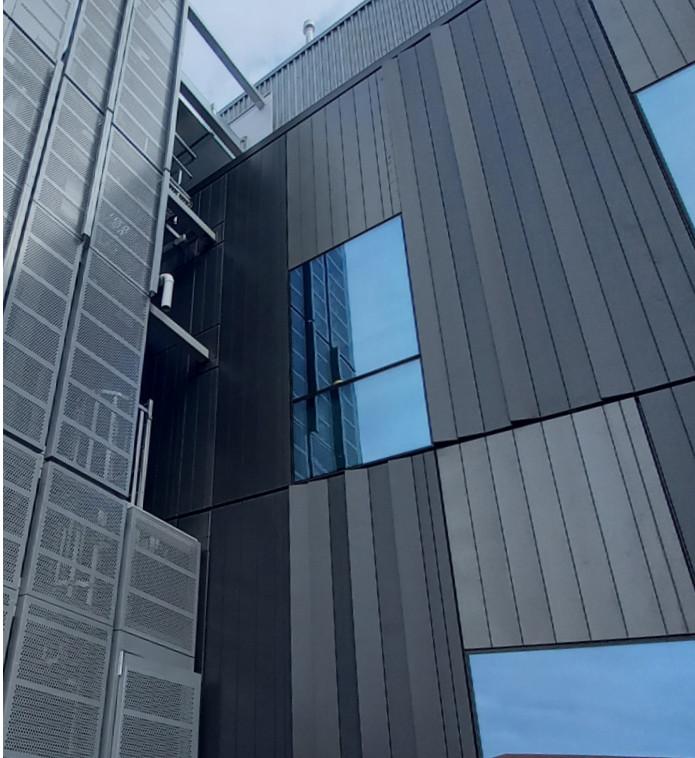
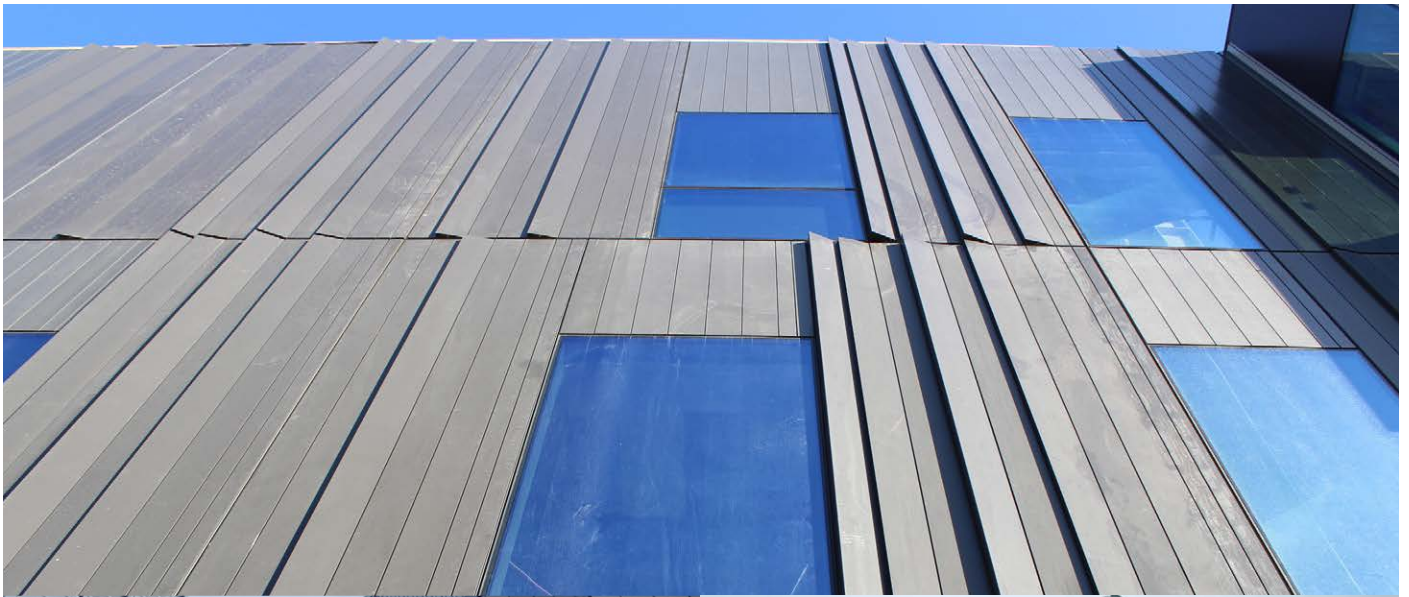
## University of Auckland B201

Unitised aluminium planking integrated with PW1000 HP Unitised Curtainwall delivers an energy efficient envelope.



## Massey Innovation Complex, Auckland

Unitised extruded aluminium plank integrated with PW1000 HP Unitised Curtainwall.



**Thermosash Commercial Limited | [www.thermosash.co.nz](http://www.thermosash.co.nz)**

A Thermosash Group Company

**Auckland (H/O)**

158-164 Central Park Drive,  
Henderson, Auckland, 0610  
New Zealand

**P:** +64 9 444 4944

**Wellington**

17-19 Marine Parade,  
Pentone, Lower Hutt,  
Wellington, 5012  
New Zealand

**P:** +64 4 939 4500

**Christchurch**

12 Braeburn Drive,  
Hornby, Christchurch 8042  
New Zealand

**P:** +64 3 348 4004