

Schüco AWS 75 PD.SI

Aluminium window system



Schüco AWS 75 PD.SI



The Panorama Design Schüco AWS 75 PD.SI window system offers extremely narrow face widths for aluminium opening units as a traditional punched opening, ribbon window and in Schüco facade systems.

Alongside energy efficiency, the seamless integration of form and function is a fundamental requirement when creating modern building envelopes. With the new Schüco AWS 75 PD.SI window, Schüco now offers an opening unit with minimal internal and external face widths that perfectly meets all of these architectural requirements. It is based on system features which are perfectly tailored to one another: a flush-fitted framed look and minimised gasket sight lines, maximum transparency due to the most slimline external and internal face widths in fixed fields and opening units for a uniform look.



With innovative and efficient glass bonding, the Panorama Design windows system ensures a minimum vent face width of 45mm across the entire window format up to vent heights of 2.5mm. Concealed drainage and a clear design-language thanks to narrow profile radii complete the pioneering Schüco AWS 75 PD.SI window system.

A perfectly tailored architectural solution is offered, for example, by integrating the new high insulation opening unit into the Schüco Facade FWS 35 PD and combining it with the narrow, opaque Schüco AWS 75 PD VV.SI ventilation vent.



New handle design and elegant gearbox



Handle design without rosettes

The new Schüco handle design without rosettes has been developed specifically for the new aluminium window system Schüco AWS 75 PD.SI, in order to perfectly accentuate the particularly narrow vent profiles.

The handle design without rosettes also has a lockable design for burglar resistance. The handles are available in the basic colours CO, black and white as well as stainless steel look. A Panorama Design push-in gearbox with increased handle spacing has been developed for optimum handle operation. The new PD push-in gearbox ensures easy operation as a facade insert unit or when installed flush with the wall.

The concealed Schüco AvanTec SimplySmart fittings are used for the new window, creating large unit dimensions and ensuring long-lasting functionality. Special function insulating glass with vent weights up to 160kg can be accommodated. The use of high-quality materials and stainless steel mean that you will enjoy the functionality and reliability of your windows for years to come.

Burglar resistance class RC 2 can be achieved with the window system AWS 75 PD.SI.

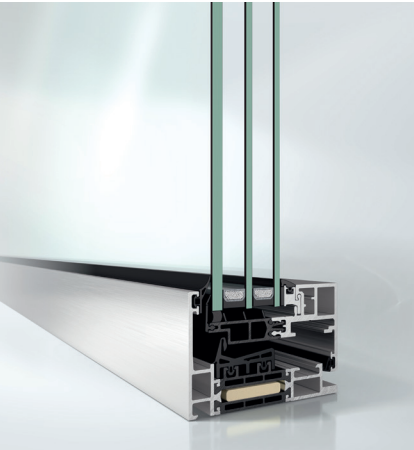


Lockable handle design without rosettes

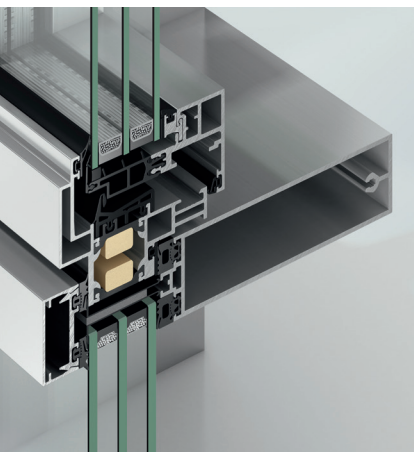


Panorama design AWS 75 PD.SI
chamber gear unit

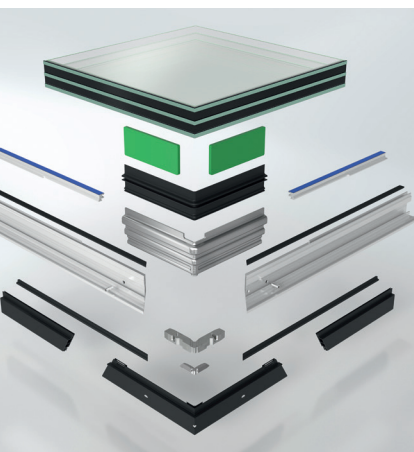
Technical data



Schüco AWS 75 PD.SI
opening unit



Schüco AWS PD.SI
facade insert



Schüco AWS 75 PD.SI
corner construction

Planning benefits

- Panorama Design: maximum transparency due to minimum profile face width
- Stylish profile geometry: inner flush finish thanks to all-round shadow gap.
- Panorama Design language of form: handle connection without rosettes with Schüco designer handle.
- Can be used as punched opening, ribbon window and facade insert unit in Schüco mullion/transom facades.
- Wide range of attachments to building structure: best possible planning options including concealed drainage.
- Burglar resistance up to class RC 2 in accordance with DIN EN 1627
- Versatile range of applications, e.g. corner mullions, structural mullions, symmetrical and asymmetrical mullions
- Maximum planning flexibility through accommodation of glass thicknesses between 26mm and 50mm, e.g. for sound reduction $R_w = 49\text{dB}$



Fabrication benefits

- Simple and reliable bonding without waiting times due to adhesive tape
- Easy and economical glass bonding based on standard insulating glass (ift guidelines VE 08/3 - assessment basis for bonded glazing systems)
- Efficient fabrication due to integration of functions, e.g. corner piece with integrated drainage
- Robust and highly attractive corner construction due to stainless steel glass carrier and one-part corner piece
- Maximum use of identical parts within the system and as part of the Schüco AWS modular system
- Economical Schüco SimplySmart fabrication processes
- Comprehensive portfolio of tools and machines to support bonding processes

Properties

Test	Value
Resistance to wind load	Up to C5/B5 depending on glass composition
Watertightness	Class 9A
Air permeability	Class 4
Glass thickness	26mm to 50mm
Thermal transmittance U_i	$U_i - 1.7\text{W}/\text{m}^2\text{K}$ ($U_w = 0.9$ with $U_g = 0.6$)
Weights	Up to 160Kg
Maximum vent sizes	Max. 1450mm x 2100mm or 1000mm x 2500mm
Test of resistance to repeated opening and closing	Class 3 (20,000 cycles)
Burglar resistance (RC)	RC 2 N / RC 2
Corrosion protection class	Class 5
Sound reduction for windows	$R_{w,p}$ to 49dB

Schüco AWS 75 PD.SI



As a leader in innovation for system-based construction, Schüco aluminium window systems combine the highest standards in terms of energy safety, security and design with market-specific requirements.

Schüco International KG

www.schueco.com

www.schueco.de/sonnenschutz
www.schueco.de/sun-shading

Folgen Sie uns:
 Follow us:



Schüco – System solutions for windows, doors and façades

Based in Bielefeld, the Schüco Group develops and sells system solutions for windows, doors and façades. With 6330 employees worldwide, the company strives to be the industry leader in terms of technology and service both now and in the future. In addition to innovative products for residential and commercial buildings, the building envelope specialist offers consultation and digital solutions for all phases of a building project – from the initial idea through to design, fabrication and installation. Schüco works with 10,000 fabricators and 30,000 architectural practices, as well as construction professionals who commission buildings around the world. Founded in 1951, the company is now active in more than 80 countries and achieved a turnover of 1.995 billion euros in 2021. For more information, visit www.schueco.com

Thermosash 
 BUILDING ENVELOPE SOLUTIONS™

SCHÜCO

The "Schüco" logo and other logos are protected in Germany and various international markets. We will provide detailed information upon request.



NZ04, 2023/Printed in New Zealand
 We reserve the right to make technical changes and to correct errors. Products may differ from illustrations.

Overview

	Schüco AWS 90 BS.SI+	Schüco AWS 90.SI+	Schüco AWS 75.SI	Schüco AWS 75 BS.SI	Schüco AWS 75 BS.HI	Schüco AWS 75 WF.SI	Schüco AWS 65	Schüco AWS 65 BS	Schüco AWS 65 WF	Schüco AWS 60	Schüco AWS 60.HI	Schüco AWS 60 BS
	Series											
Energy												
Thermally insulated							■	■	■	■		■
High Thermally insulated			■	■	■	■					■	
Suitable for passive houses	■	■										
U _f -values in W/(m²K) from	0.71	0.8	0.92	1.3	1.3	1.4	1.9	2.0	2.6	1.9	1.7	2.1
Weighted sound insulation index R _w in dB	47	49	48	49	45	49	47	44	44	45	45	43
Design												
Basic depth in mm	90	90	75	75	75	75	65	65	65	60	60	60
Fittings												
Schüco AvanTec, concealed	■	■	■	■	■	■	■	■	■	■	■	■
Schüco TipTronic, concealed	■	■	■	■	■	■	■	■	■	■	■	
Design Options												
RL (Residential Line)			■				■			■		
SL (Soft Line)			■				■			■		
MC (Multi Contour)							■			■	■	
BS (Block system)		■		■		■		■				■
WF (Window Facade)					■				■			
Areas of Use												
Facade insert unit	■	■	■	■		■	■	■		■	■	■
Window facade					■				■			
Floating window				■		■		■				■
Compatible Schüco ADS door system	■		■				■			■		

Overview

	Schüco AWS 90 BS.SI+	Schüco AWS 90.SI+	Schüco AWS 75.SI	Schüco AWS 75 BS.SI	Schüco AWS 75 BS.HI	Schüco AWS 75 WF.SI	Schüco AWS 65	Schüco AWS 65 BS	Schüco AWS 65 WF	Schüco AWS 60	Schüco AWS 60.HI	Schüco AWS 60 BS
	Series											
Schüco Avan Tec												
Side -hung (SH), turn/tilt (TT), bottom-hung (BH), tilt-before-turn (TbT)	■	■	■	■	■	■	■	■	■	■	■	■
Double-vent	■	■	■	■		■	■	■		■	■	■
Crank-operated turn/tilt vent												
Tilt/slide vent	■	■	■	■		■	■		■	■	■	■
Weighted sound insulation index Rw in dB	■	■	■	■	■	■	■	■	■	■	■	■
Outward-opening			■			■			■	■	■	
Side-hung, top-hung vent			■			■				■	■	
Horizontal and vertical pivot vent												
Security												
Burglar resistance in accordance with DIN EN 1627												
Schüco AvanTec WK1	■	■	■	■	■	■	■	■	■	■	■	■
Schüco AvanTec RC2 (WK2)	■	■	■	■	■	■	■	■		■	■	■
Schüco AvanTec RC3 (WK3)	■	■	■			■	■	■				
Schüco TipTronic WK1	■	■	■	■	■	■	■	■	■			
Schüco TipTronic RC2 WK2	■	■	■	■	■	■	■					
Monitoring of opening and closing, display	■	■	■	■	■	■	■	■	■	■	■	■
Automation												
Schüco TipTronic												
Turn / tilt fitting	■	■	■	■	■	■	■	■	■	■	■	■
Toplight	■	■	■	■	■	■	■	■	■	■	■	■
Outward opening			■				■					
Group control, bus automation	■	■	■	■	■	■	■	■	■			
Automatic night-time cooling, automatic ventilation	■	■	■	■	■	■	■	■	■			

PRODUCTS

CANOPIES
SHOPFRONT
RAINScreens
BALUSTRADES
THERMAL BREAK
DOORS & SLIDERS
CHANNEL GLAZING
MECHANICAL LOUVRES
ROOFLIGHTS & ATRIUMS
COMMERCIAL WINDOWS
SOLARSHADING, LOUVRES & FINS
TOTAL VISION - STRUCTURAL GLAZING
UNITISED CURTAINWALL & PANELWALL FAÇADES
SCHÜCO - HIGH END RESIDENTIAL WINDOWS & DOORS

Auckland

158-164 Central Park Drive,
Henderson, Auckland 0610
PO Box 100-340, North Shore,
Auckland 0745, New Zealand
P: +64 9 444 4944
F: +64 9 444 4886

Wellington

17-19 Marine Parade, Petone,
Lower Hutt 5012, New Zealand
PO Box 38-645, Wellington Mail
Centre, Lower Hutt 5045, New Zealand
P: +64 4 939 4500
F: +64 4 939 4499

Christchurch

12 Braeburn Drive
Hornby, Christchurch 8040
PO Box 313, Christchurch 8140,
New Zealand
P: +64 4 348 4004
F: +64 4 348 4088