

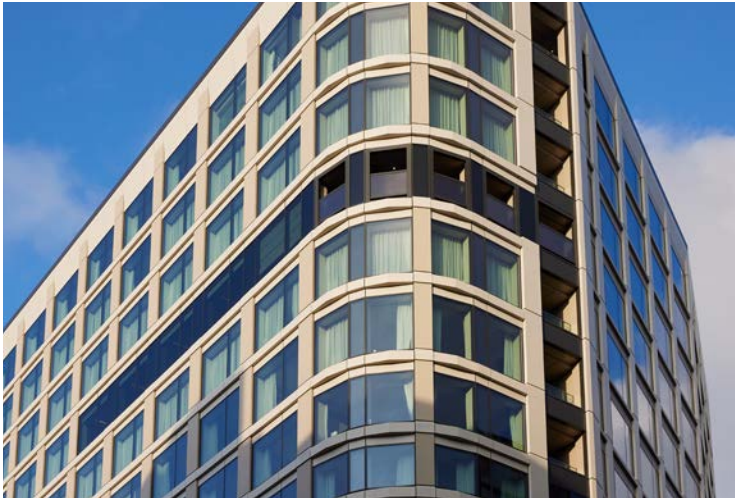


**Thermosash**   
BUILDING ENVELOPE SOLUTIONS™

Material design and finish examples



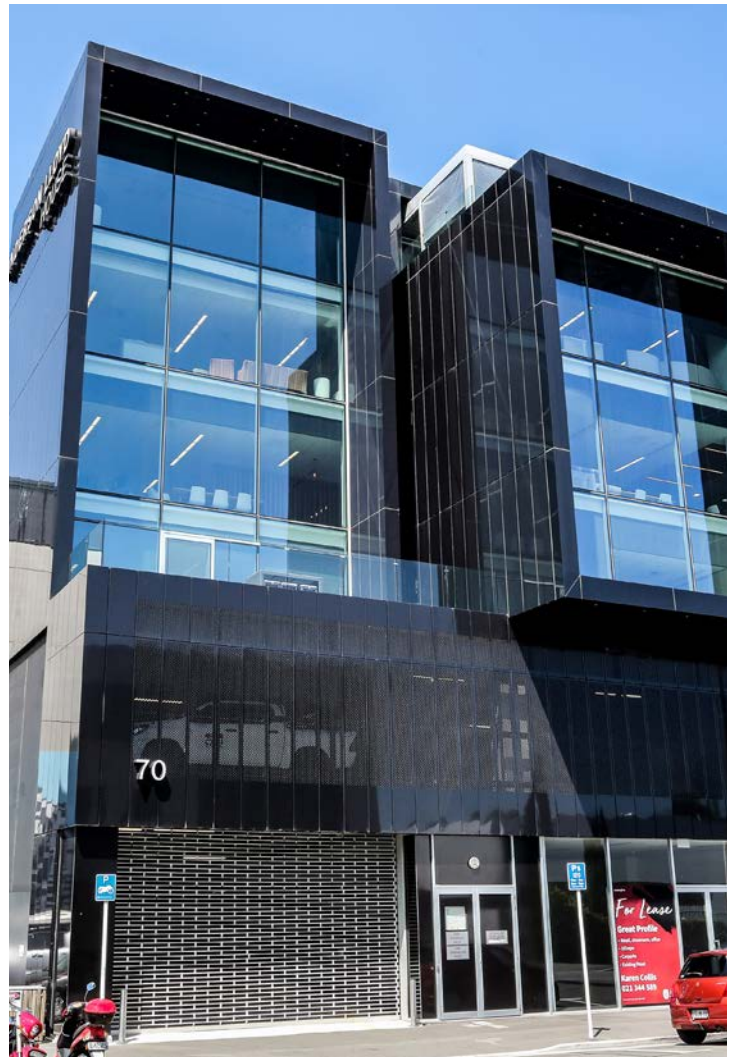
# SOLID ALUMINIUM SHEET FLAT



New addition to the Cordis Hotel, Auckland - flat solid aluminium panels with embossed powdercoating to maintain a look similar to the precast panel facade of the original hotel.



Columbia Apartments, Auckland - re-clad project which included flat solid aluminium panels powdercoated to compliment the integrated terracotta tiles.



70 Gloucester Street, Christchurch - black composite aluminium panels provide a striking aesthetic to the building.



# SOLID ALUMINIUM SHEET

## FOLDED



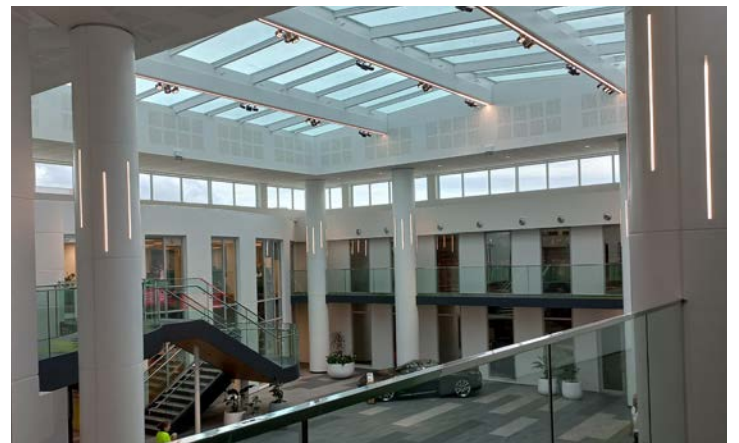
Aria Apartments, Vinegar Lane, Auckland - showcases architectural folded aluminium integrated into the curtainwall.



1 Enfield Apartments, Auckland - architectural aluminium pressings integrated into curtainwall.



CAB Apartments, Auckland - unique folded metal cladding designed to match the original heritage fluting.



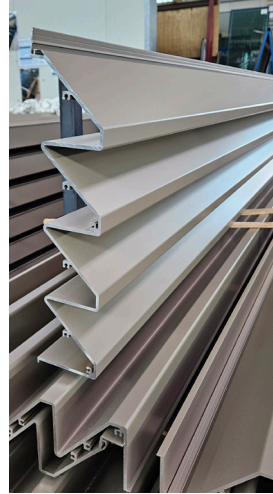
Toyota HQ, Palmerston North - columns clad with flat folded aluminium sheets.



# ALUMINIUM SHEET METAL PLANK



Taranaki Base Hospital East Wing, NEWB - features a variety of profiled unitised aluminium planking integrated into PW1000 high performance unitised curtainwall.



Factory extruded and folded aluminium plank.



Aluminium planking unitised panels with end caps, stacked on factory crates ready for transport.



University of Auckland B201 - a sustainable facade with low embodied carbon unitised plank integrated into a high performance PW1000 unitised curtainwall.



AUT M1 Mana Hauora Building - unitised aluminium plank provided a lightweight alternative to terracotta due to the floor spans on this project.



University of Auckland B201 - unitised aluminium plank profile.



Massey Innovation Complex, Auckland - unitised extruded aluminium plank integrated with high performance curtainwall.



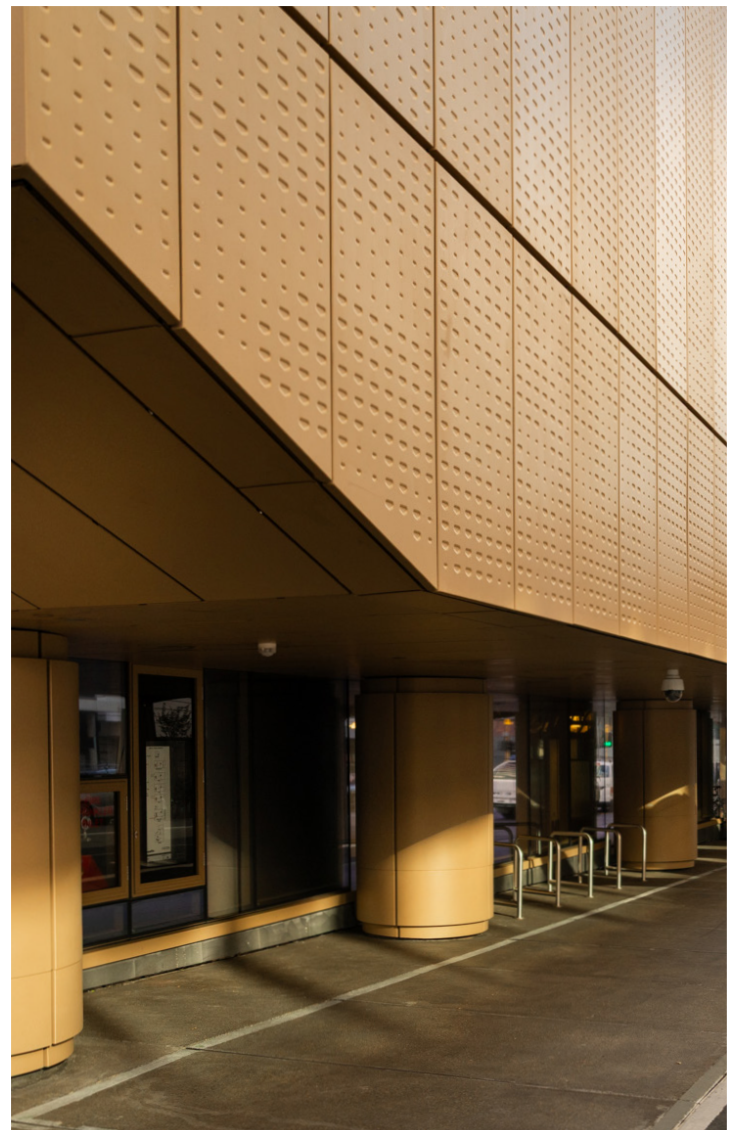
Te Ao Nui Building (IL4), Palmerston North - extruded aluminium plank vertical cladding.



# SOLID ALUMINIUM SHEET EMBOSSED/DEBOSSED

## Heke Rua National Archives Wellington

Embossed thermally broken unitised aluminium curtainwall.





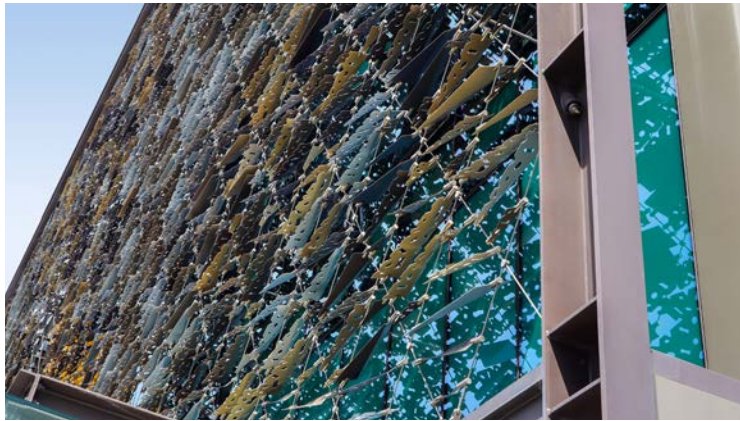
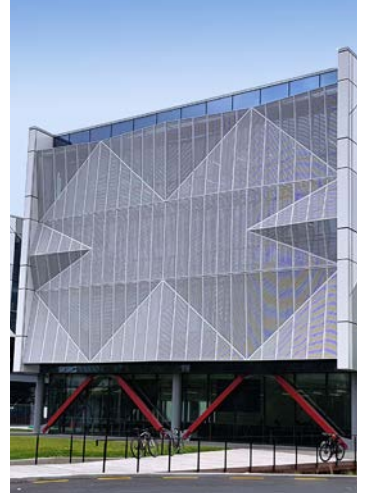
# ALUMINIUM SHEET METAL PERFORATED



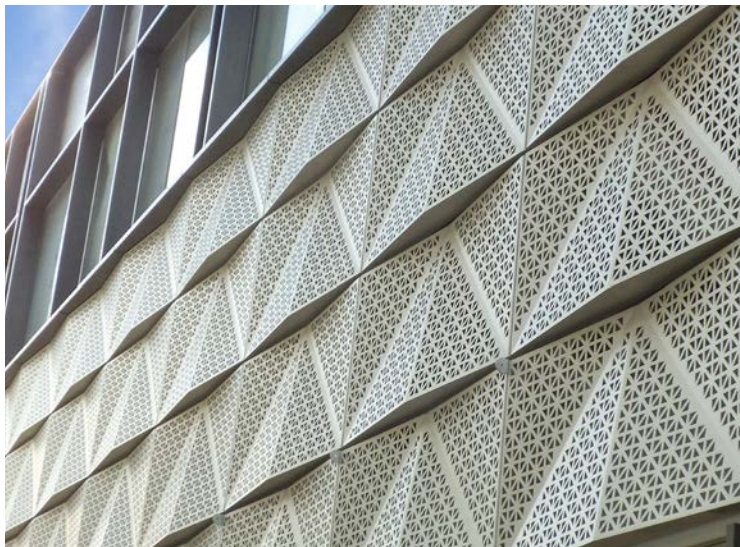
Regent Centre, Wellington - patternated perforated sheet metal balconies.



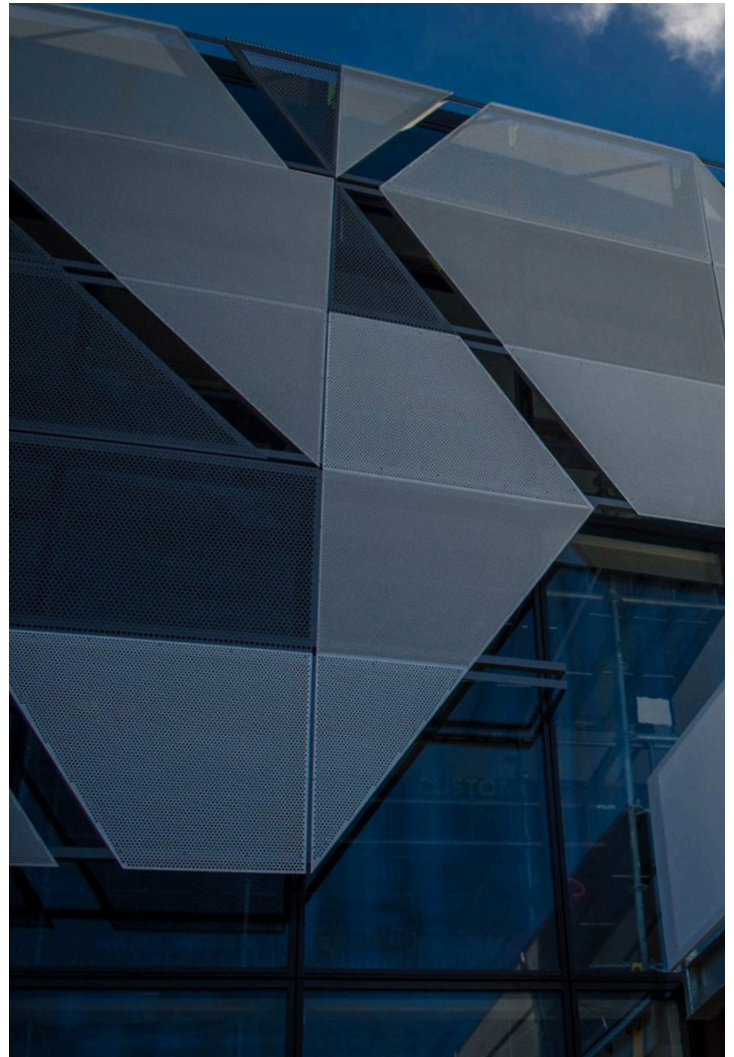
UOC - Rutherford Regional Science & Innovation Centre - 'X Chromosome' perforated architectural metal folding integrated into unitised curtainwall.



ASB North Wharf, Auckland - features a unique solar shade device with tension cabled custom perforated metal leaf elements.



Bnz Cashel stage 1 - perforated and folded sheet metal installed as car park screening.



Rangi Ruru Girls School, Christchurch - perforated metal sunscreens to Science and General Academic blocks.





136 Moorhouse Avenue, Christchurch - architectural metal folded feature elements

**Thermosash Commercial Limited | [www.thermosash.co.nz](http://www.thermosash.co.nz)**

A Thermosash Group Company

**Auckland (H/O)**

158-164 Central Park Drive,  
Henderson, Auckland, 0610  
New Zealand

**P:** +64 9 444 4944

**Wellington**

17-19 Marine Parade,  
Pentone, Lower Hutt,  
Wellington, 5012  
New Zealand

**P:** +64 4 939 4500

**Levin**

13 enterprise Drive,  
Levin, 5571  
New Zealand

**P:** +64 9 444 4944

**Christchurch**

12 Braeburn Drive,  
Hornby, Christchurch 8042  
New Zealand

**P:** +64 3 348 4004