

# Schüco AWS 75

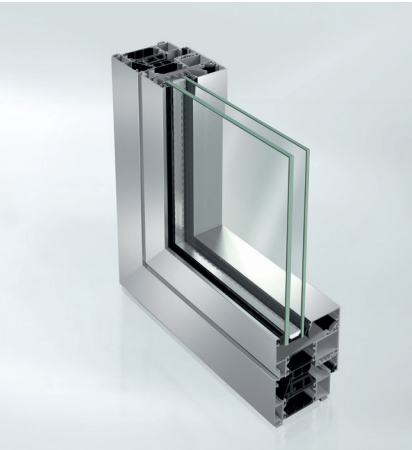
Aluminium window system





# Schüco AWS 75

## The high-quality window system with a comprehensive range of solutions

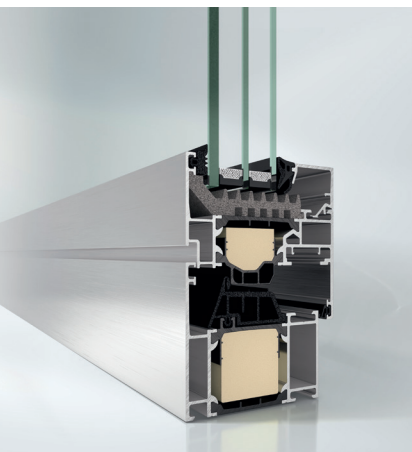


Schüco window AWS 75

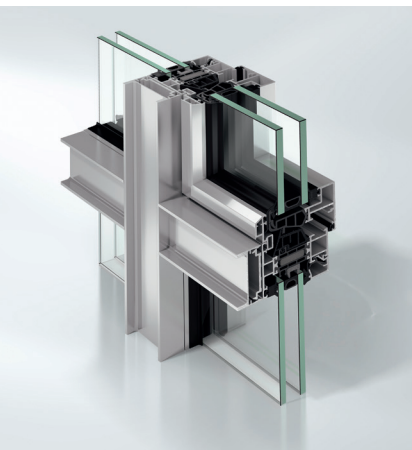
The Schüco AWS window modules with a basic depth of 75mm feature impressive characteristics in terms of function, energy efficiency and design. Above all, the new Schüco AWS75.SI+ window allows the thermal insulation to be optimised for energy efficiency, with a  $U_f$  value of 1.2 W/(m<sup>2</sup>K) and a face width of 117mm.

SimplySmart technology provides fabrication benefits with a centre gasket that is optimised for energy efficiency and new glazing rebate insulation. When used in conjunction with the new generation of Schüco AvanTec SimplySmart mechanical fittings, this also allows significant time savings to be made during installation.

The slim design and maximum transparency of the AWS 75 BS.SI+ block window due to its concealed vent frame allow the highest requirements in terms of energy efficiency and architecture to be fulfilled. Based on the Schüco block window, the highly thermally insulated Schüco AWS 75 WF.SI+ system is designed specifically for the economical construction of ribbon windows with storey-height glazing and a mullion/transom appearance.



Schüco window AWS 75.SI+



Schüco window AWS 75 WF.SI+

# Schüco AWS 75

Product benefits		
Schüco AWS 75.SI <sup>+</sup>	Schüco AWS 75 BS.SI <sup>+</sup>	Schüco AWS 75 WF.SI <sup>+</sup>
<ul style="list-style-type: none"> <li>Highly thermally insulated aluminium window system with optimised, energy-efficient glazing rebate insulation, centre gasket and new contour of the PA insulating bars with U<sub>f</sub> values from 0.92 W/(m<sup>2</sup>K)</li> <li>U<sub>f</sub> value of 1.2 W/(m<sup>2</sup>K) with 117mm face width, U<sub>w</sub> value of 0.90 W/m<sup>2</sup>K and U<sub>g</sub> value of 0.6 W/(m<sup>2</sup>K)</li> <li>Special modern outer frame available.</li> <li>Available as an outward-opening system.</li> <li>Centre gaskets with fins, made from micro-cellular rubber.</li> <li>Vent available with standard and residential look.</li> </ul>	<ul style="list-style-type: none"> <li>Block window system with concealed vent and outstanding thermal insulation with a basic depth of 75mm: U<sub>f</sub> value of 1.3 W/(m<sup>2</sup>K) with a face width of 89mm and U<sub>w</sub> of less than 1.0 W/(m<sup>2</sup>K) with triple glazing, also available as an AWS 75 BS.HI+ version with a U<sub>f</sub> value from 1.4 W/(m<sup>2</sup>K).</li> <li>Very narrow face widths from 67mm due to the concealed vent profile</li> <li>Comprehensive profile range with mullion profile face widths of up to 44mm, insert outer frames of up to 51mm, double vents and vent sash bars</li> </ul>	<ul style="list-style-type: none"> <li>Highly thermally insulated window facade with narrow external face widths from 50mm.</li> <li>Outstanding thermal insulation and installation due to new, optimised centre gasket with a U<sub>f</sub> value from 1.3 W/(m<sup>2</sup>K) and a U<sub>w</sub> value of less than 1.0 W/(m<sup>2</sup>K) with triple glazing.</li> </ul>
Fabrication benefits		
<ul style="list-style-type: none"> <li>Improved fabrication of the glazing rebate insulation as a moulded piece. This reduces installation time.</li> </ul>	<ul style="list-style-type: none"> <li>Optimised thermal insulation due to new centre gasket, and optimised installation due to innovative materials.</li> </ul>	<ul style="list-style-type: none"> <li>Comprehensive design options with cover cap versions from Schüco FW50<sup>+</sup> facade system.</li> </ul>

Technical data	AWS 75.SI <sup>+</sup>	AWS 75 BS.SI <sup>+</sup>	AWS 75 WF.SI <sup>+</sup>
U <sub>f</sub> values in W/(m <sup>2</sup> K) from	0.92	1.3	1.3
Basic depths in mm	75	75	75
Compatible with Schüco TipTronic	■	■	■
Sound insulation/standard DIN EN 20140 up to R <sub>w</sub> value in dB	48	49	45
Burglar resistance/standard DIN EN 1627 (Class)	RC3 (WK3)	RC2 (WK2)	RC2 (WK2)
Watertightness/standard DIN EN 12208 (Class)	9a	9a	9a
Air permeability, DIN 12207 (Class)	4	4	4
Wind load resistance, DIN 12210 (Class)	C5/B5	C5/B5	C2/B3

## Schüco AWS 75



As a leader in innovation for system-based construction, Schüco aluminium window systems combine the highest standards in terms of energy safety, security and design with market-specific requirements.

### Schüco International KG

[www.schueco.com](http://www.schueco.com)

[www.schueco.de](http://www.schueco.de)

Folgen Sie uns:  
Follow us:



### Schüco – System solutions for windows, doors and façades

Based in Bielefeld, the Schüco Group develops and sells system solutions for windows, doors and façades. With 6330 employees worldwide, the company strives to be the industry leader in terms of technology and service both now and in the future. In addition to innovative products for residential and commercial buildings, the building envelope specialist offers consultation and digital solutions for all phases of a building project – from the initial idea through to design, fabrication and installation. Schüco works with 10,000 fabricators and 30,000 architectural practices, as well as construction professionals who commission buildings around the world. Founded in 1951, the company is now active in more than 80 countries and achieved a turnover of 1.995 billion euros in 2021. For more information, visit [www.schueco.com](http://www.schueco.com)



The "Schüco" logo and other logos are protected in Germany and various international markets. We will provide detailed information upon request.

NZ04-2023/Printed in New Zealand  
We reserve the right to make technical changes and to correct errors. Products may differ from illustrations.







# Overview

	Schüco AWS 90 BS.SI+	Schüco AWS 90.SI+	Schüco AWS 75.SI	Schüco AWS 75 BS.SI	Schüco AWS 75 BS.HI	Schüco AWS 75 WF.SI	Schüco AWS 65	Schüco AWS 65 BS	Schüco AWS 65 WF	Schüco AWS 60	Schüco AWS 60.HI	Schüco AWS 60 BS
<b>Energy</b>												
Thermally insulated							■	■	■	■		■
High Thermally insulated			■	■	■	■					■	
Suitable for passive houses	■	■										
U <sub>f</sub> -values in W/(m <sup>2</sup> K) from	0.71	0.8	0.92	1.3	1.3	1.4	1.9	2.0	2.6	1.9	1.7	2.1
Weighted sound insulation index R <sub>w</sub> in dB	47	49	48	49	45	49	47	44	44	45	45	43
<b>Design</b>												
Basic depth in mm	90	90	75	75	75	75	65	65	65	60	60	60
<b>Fittings</b>												
Schüco AvanTec, concealed	■	■	■	■	■	■	■	■	■	■	■	■
Schüco TipTronic, concealed	■	■	■	■	■	■	■	■	■	■	■	
<b>Design Options</b>												
RL (Residential Line)			■				■			■		
SL (Soft Line)			■				■			■		
MC (Multi Contour)							■			■	■	
BS (Block system)		■		■		■		■				■
WF (Window Facade)					■				■			
<b>Areas of Use</b>												
Facade insert unit	■	■	■	■		■	■	■		■	■	■
Window facade					■				■			
Floating window				■		■		■				■
Compatible Schüco ADS door system	■		■				■			■		

# Overview

	Schüco AWS 90 BS.SI+	Schüco AWS 90.SI+	Schüco AWS 75.SI	Schüco AWS 75 BS.SI	Schüco AWS 75 BS.HI	Schüco AWS 75 WF.SI	Schüco AWS 65	Schüco AWS 65 BS	Schüco AWS 65 WF	Schüco AWS 60	Schüco AWS 60.HI	Schüco AWS 60 BS
<b>Schüco Avan Tec</b>												
Side -hung (SH), turn/tilt (TT), bottom-hung (BH), tilt-before-turn (TbT)	■	■	■	■	■	■	■	■	■	■	■	■
Double-vent	■	■	■	■		■	■	■		■	■	■
Crank-operated turn/tilt vent												
Tilt/slide vent	■	■	■	■		■	■		■	■	■	■
Bottom-hung toplight	■	■	■	■	■	■	■	■	■	■	■	■
Outward-opening			■			■			■	■	■	
Side-hung, top-hung vent			■			■				■	■	
Horizontal and vertical pivot vent												
<b>Security</b>												
Burglar resistance in accordance with DIN EN 1627												
Schüco AvanTec WK1	■	■	■	■	■	■	■	■	■	■	■	■
Schüco AvanTec RC2 (WK2)	■	■	■	■	■	■	■	■		■	■	■
Schüco AvanTec RC3 (WK3)	■	■	■			■	■	■				
Schüco TipTronic WK1	■	■	■	■	■	■	■	■	■			
Schüco TipTronic RC2 WK2	■	■	■	■	■	■	■					
Monitoring of opening and closing, display	■	■	■	■	■	■	■	■	■	■	■	■
<b>Automation</b>												
Schüco TipTronic												
Turn / tilt fitting	■	■	■	■	■	■	■	■	■	■	■	■
Toplight	■	■	■	■	■	■	■	■	■	■	■	■
Outward opening			■				■					
Group control, bus automation	■	■	■	■	■	■	■	■	■			
Automatic night-time cooling, automatic ventilation	■	■	■	■	■	■	■	■	■			





# Thermosash

BUILDING ENVELOPE SOLUTIONS™

## SCHÜCO

PARTNER

### PRODUCTS

CANOPIES  
SHOPFRONT  
RAINSCREENS  
BALUSTRADES  
THERMAL BREAK  
DOORS & SLIDERS  
CHANNEL GLAZING  
MECHANICAL LOUVRES  
ROOFLIGHTS & ATRIUMS  
COMMERCIAL WINDOWS  
SOLARSHADING, LOUVRES & FINS  
TOTAL VISION - STRUCTURAL GLAZING  
UNITISED CURTAINWALL & PANELWALL FAÇADES  
SCHÜCO - HIGH END RESIDENTIAL WINDOWS & DOORS

#### Auckland

158-164 Central Park Drive,  
Henderson, Auckland 0610  
PO Box 100-340, North Shore,  
Auckland 0745, New Zealand  
P: +64 9 444 4944  
F: +64 9 444 4886

#### Wellington

17-19 Marine Parade, Petone,  
Lower Hutt 5012, New Zealand  
PO Box 38-645, Wellington Mail  
Centre, Lower Hutt 5045, New Zealand  
P: +64 4 939 4500  
F: +64 4 939 4499

#### Christchurch

12 Braeburn Drive  
Hornby, Christchurch 8040  
PO Box 313, Christchurch 8140,  
New Zealand  
P: +64 4 348 4004  
F: +64 4 348 4088

[www.thermosash.co.nz](http://www.thermosash.co.nz)