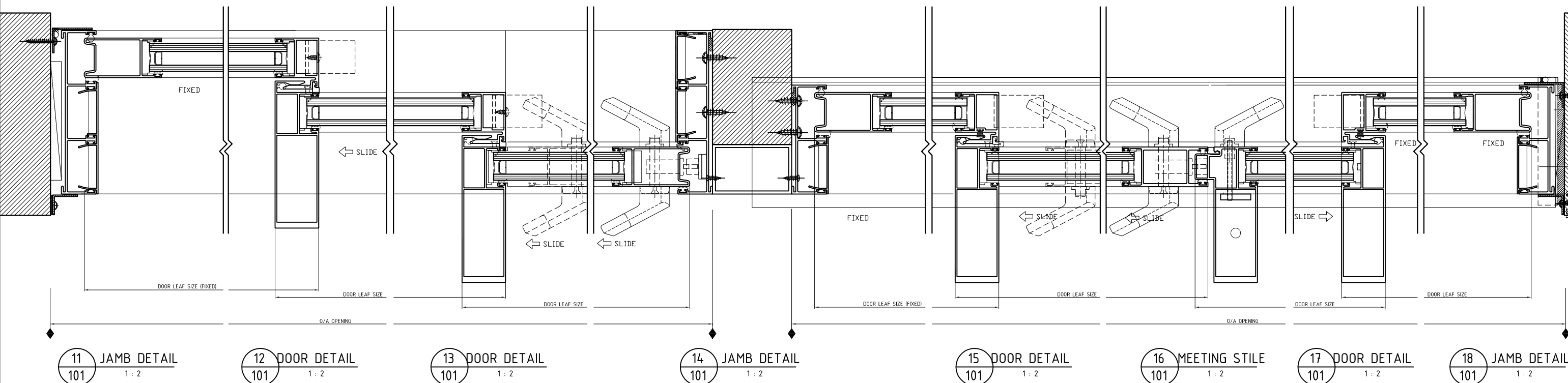
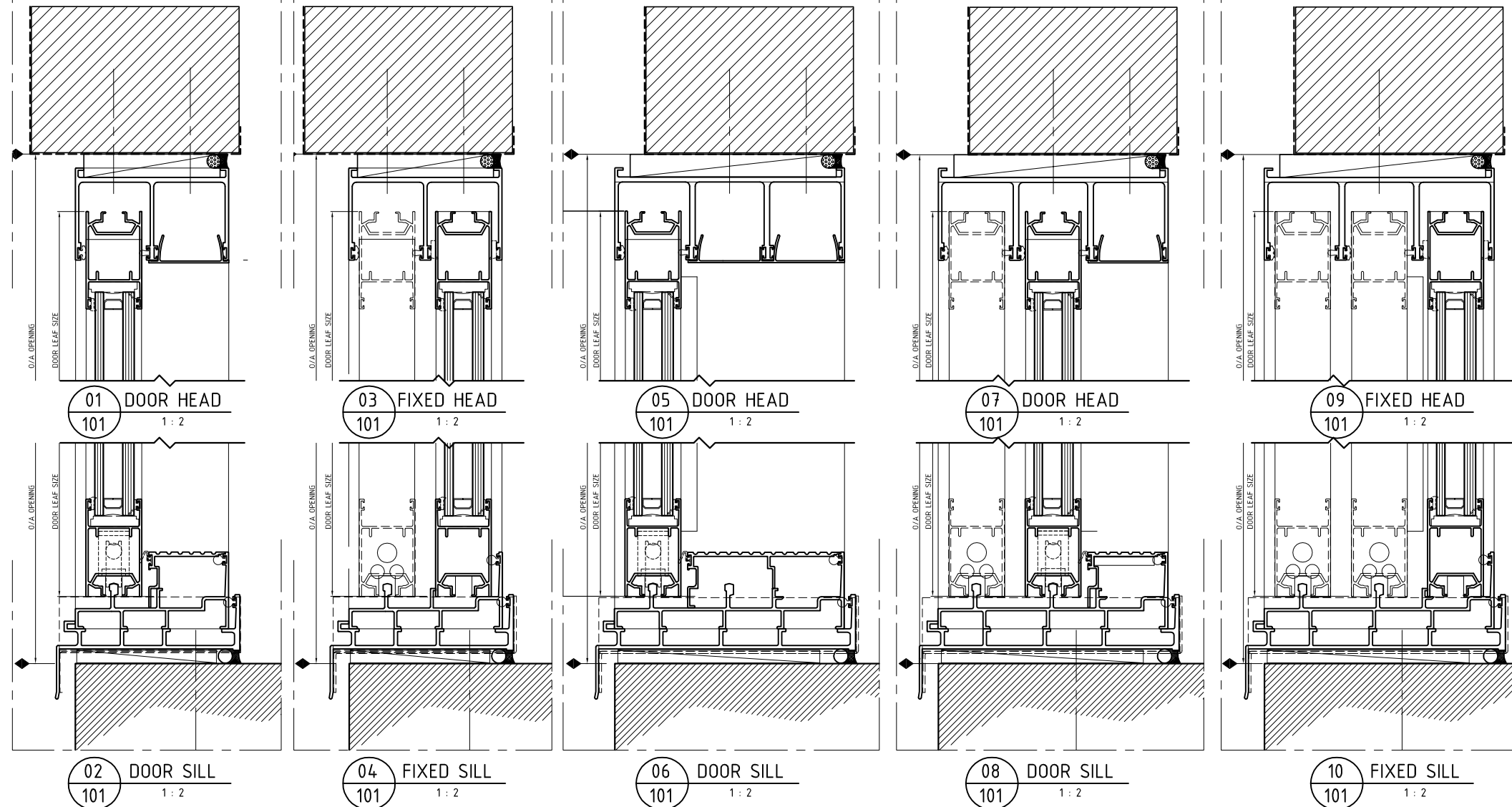



**NOTES:**  
 1) DRAWING TO BE USED IN CONJUNCTION WITH 'MASTERSPEC' (4211)  
 2) WINDOW SYSTEMS REQUIRE SPECIFIC DESIGN DEPENDING ON SPANS, WIND-LOADS, BUILDING CONDITIONS, ETC.  
 3) INSIDE GLAZE, INTERNAL REINFORCEMENT AND SEISMIC FRAME OPTIONS AVAILABLE

GLAZING: GLASS THICKNESS TO SUIT REQUIREMENTS  
 HARDWARE: STANDARD HARDWARE OPTIONS  
 FINISHES: POWDER-COAT / ANODISED / PVF<sup>2</sup>



SIMPLIFIED WEB VERSION

SYSTEM : SLIDING DOOR SYSTEM		TYPE : BI-PARTING		SCALE: 1:2 @ A3	DATE: Jan-18
www.thermosash.co.nz ~ AUCKLAND: (09)444-4944 ~ WELLINGTON: (04)939-4500 ~ CHRISTCHURCH: (03)348-4004				PAGE: 101	 <b>Thermosash</b> BUILDING ENVELOPE SOLUTIONS™