



Facade Sustainability Tools

NZ and AU Green Star Certification

Thermosash 
BUILDING ENVELOPE SOLUTIONS™



Who We Are

Over 50 years of dedication.

Half a century of engineering milestones, and we're just getting started.

We are Proud of Where We've Come From

Thermosash was founded by five visionary engineers in 1973 and is New Zealand's leading specialist in engineered prefabricated façades. We design, manufacture, and install high-performance window and curtainwall systems for complex commercial projects. Trusted by major clients like universities, airports, and property developers, we offer lightweight, integrated metal and glass cladding solutions tailored to seismic and architectural needs.

As a 100% locally-owned company with manufacturing facilities in Auckland, Wellington, Levin and Christchurch, we deliver innovation, precision, and compliance at every stage. Backed by the Thermosash Group, including Woods Glass and WEC (Window Engineering Consultants), we provide comprehensive building envelope solutions across New Zealand and abroad.

We Push Boundaries in Façade Engineering

At Thermosash, we thrive on pushing the boundaries of what's possible in façade engineering to meet project imposed engineering challenges. We not only meet standards - we often surpass them. Our team of experts are constantly seeking smarter ways to improve facade performance to create efficient sustainable solutions.

We have the Strength of the Thermosash Group

We are part of the Thermosash Group of Companies, which includes Thermosash Service and Maintenance, Woods Glass, and WEC. We have the advantage of the collective expertise and knowledge of the Group that enhances our offerings and enables us to deliver comprehensive solutions.

We Deliver on Performance and Durability

Thermosash prioritises performance and longevity. Our façades undergo rigorous testing, adhering to the highest industry standards. We operate an IANZ-audited testing facility for seismic, weather, and performance validation, ensuring certified quality and resilience.

We Value a Collaborative Approach

Thermosash is more than a provider, we're a partner. Our collaborative approach involves close consultation with architects, builders, and project managers from project inception. This ensures that our custom-engineered façades align with the project's vision, schedule, and budget.

We Believe Quality Assurance and Compliance is Key

Our commitment to delivering high-performance, quality unitised façade units extends to our comprehensive inspection and testing plan. This plan is a detailed roadmap that guides our efforts to ensure that every unit meets industry standards and your project's specific requirements.

We invest in Manufacturing and Engineering

Our vast manufacturing capacity, cutting-edge technology, and in-house engineering enable us to tackle multiple projects concurrently while maintaining precision and quality. Our team's commitment to meticulous engineering ensures that each project, from concept to construction, meets the unique structural and environmental design requirements and is code compliant.

We Add Sustainable Value

Thermosash integrates advanced digital design, strong local partnerships, and sustainable methodologies:

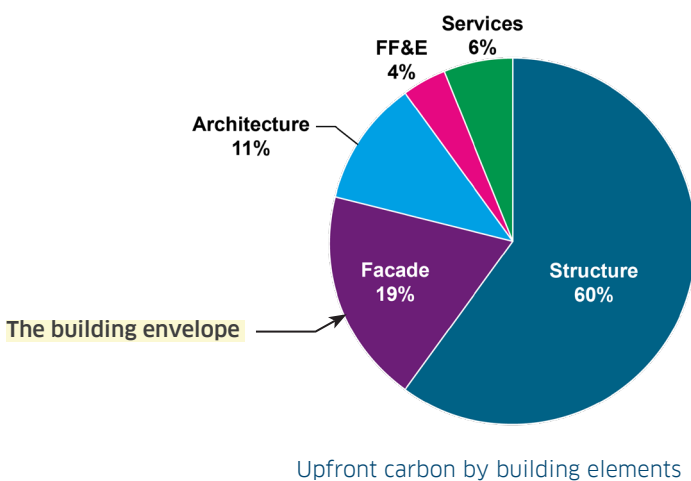
- We offer project sustainability analysis including embodied and operational carbon, thermal comfort, and energy costs as well as life cycle assessments and Green Star compliance to assist with delivering an optimised facade solution.
- Our BIM capabilities and in-house specialists ensure seamless project coordination, accurate prefabrication, and reduced architectural documentation.
- Our local sustainable supply chain features low-carbon aluminium from a local extruder and eco-friendly powder coaters.
- We use SGS to audit any new international suppliers to ensure safe, traceable and sustainable practices
- Our factories and offices recycle 100% metals, uncontaminated soft plastics, timber, cardboard, paper and 99.5% commercial float glass and IGUs.
- Partnering with Woods Glass, we guide clients in selecting high-performance, cost-effective glazing that meets strict performance and code requirements.
- We are a Certified Toitū Carbon Reduce organisation, with emissions generating-activities quantified to produce an audited total value for operational carbon emissions.



Project Sustainability Analysis

The driving force behind optimising facade design.

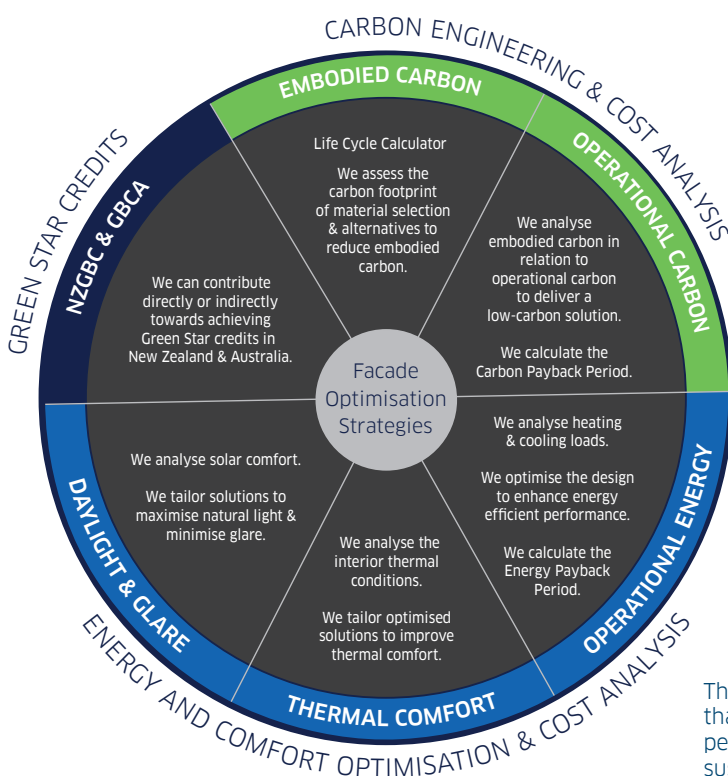
Our Thermosash Sustainability Team can provide expert analysis and optimised solutions to reduce carbon and operational energy throughout the project life cycle.



The facade of a building plays a significant role in the embodied and operational carbon impact of a project, as well as the overall operational energy use during its lifetime. Building envelopes that deliver efficient operational performance by decreasing energy costs and improving occupant comfort, as well as utilising lower embodied carbon materials, are no longer optional but essential for meeting compliance and sustainability goals.

Our Project Sustainability Analysis guides project specific decisions such as: material choices, facade systems, solar shading, glass selection, and aesthetics to optimise façades for sustainable high performance, durability and resilience – improving occupant comfort, reducing maintenance costs and ensuring a return on investment.

Sustainability is about changing how things are done in the present to create a positive impact upon the future.



Project Sustainability Analysis

To achieve optimised high performance outcomes we offer our clients the option of a Project Sustainability Analysis that covers different aspects of the full sustainability cycle. When specifying our facade systems, clients can engage us to implement one or several of our Facade Optimisation Strategies to achieve their project sustainability goals. To gain the most from our strategies, talk to us early on in the design phase of your project.

Thermosash Facade Optimisation Strategies that can be implemented to optimise facade performance to achieve project specific sustainability goals.



Green Star Certification

Assisting with project sustainability goals.

Thermosash can make a positive contribution towards achieving Green Star credits.

NZGBC Green Star Ratings

- 4-star rating requires 15+ points
- 5-star rating requires 35+ points
- 6-star rating requires 70+ point

Thermosash can contribute directly or indirectly to at least:

- 9 credit categories, worth up to 28 points.
- With the potential to add value of up to 35 points.

GBCA Green Star Ratings

- 4-star rating requires 15+ points
- 5-star rating requires 35+ points
- 6-star rating requires 70+ point

Thermosash can contribute directly or indirectly to at least:

- 9 credit categories, worth up to 25 points.
- With the potential to add value of up to 33 points.

New Zealand Green Star credit scores

Core Greenstar credit assistance
<ul style="list-style-type: none"> ▪ Responsible Envelope – 4 points ▪ Responsible Finishes – 2 points ▪ Exposure to Toxins – 2 points ▪ Climate Change Resilience – 1 point ▪ Operations Resilience – 2 points ▪ Upfront Carbon Emissions – 8 Points ▪ Energy Use – 7 points ▪ Thermal Comfort and Amenity Spaces – 2 Points
Added value contributions
<ul style="list-style-type: none"> ▪ Responsible Procurement – 1 point ▪ Verification and Handover – 1 point ▪ Design for Inclusion – 3 points ▪ Clean air – 2 points ▪ Light Quality – 4 points ▪ Acoustic Comfort – 2 points ▪ Connection to Nature – 2 points ▪ Heat Resilience – 1 points ▪ Grid Resilience – 4 points ▪ Other Carbon Emissions – 4 points ▪ Life Cycle Impacts – 2 points ▪ Contribution to Place – 2 points ▪ Procurement and Workforce Inclusion – 3 points
Other impacts
<ul style="list-style-type: none"> ▪ Responsible Construction – 1 point ▪ Industry Development – 1 point ▪ Inclusive Construction Practices – 1 point

Australia Green Star credit scores

Core Greenstar credit assistance
<ul style="list-style-type: none"> ▪ Responsible Envelope – 4 points ▪ Responsible Finishes – 2 points ▪ Exposure to Toxins – 2 points ▪ Climate Change Resilience – 1 point ▪ Operations Resilience – 2 points ▪ Upfront Carbon Emissions – 6 Points ▪ Energy Use – 6 points ▪ Thermal Comfort and Amenity Spaces – 2 Points
Added value contributions
<ul style="list-style-type: none"> ▪ Responsible Procurement – 1 point ▪ Verification and Handover – 1 point ▪ Design for Inclusion – 3 points ▪ Clean air – 2 points ▪ Light Quality – 4 points ▪ Acoustic Comfort – 2 points ▪ Connection to Nature – 2 points ▪ Heat Resilience – 1 points ▪ Grid Resilience – 3 points ▪ Other Carbon Emissions – 4 points ▪ Life Cycle Impacts – 2 points ▪ Contribution to Place – 2 points ▪ Procurement and Workforce Inclusion – 3 points
Other impacts
<ul style="list-style-type: none"> ▪ Responsible Construction – 1 point ▪ Industry Development – 1 point ▪ Inclusive Construction Practices – 1 point



Thermosash Commercial Limited | www.thermosash.co.nz

A Thermosash Group Company

Auckland (H/O)

158-164 Central Park
Drive,
Henderson, Auckland,
0610
New Zealand

P: +64 9 444 4944

Wellington

17-19 Marine Parade,
Petone, Lower Hutt,
Wellington, 5012
New Zealand

P: +64 4 939 4500

Levin

13 enterprise Drive,
Levin, 5571
New Zealand

P: +64 9 444 4944

Christchurch

12 Braeburn Drive,
Hornby, Christchurch
8042
New Zealand

P: +64 3 348 4004

Brisbane

Australia

Chrisco Oelofse

P: +61 46 868 8554