

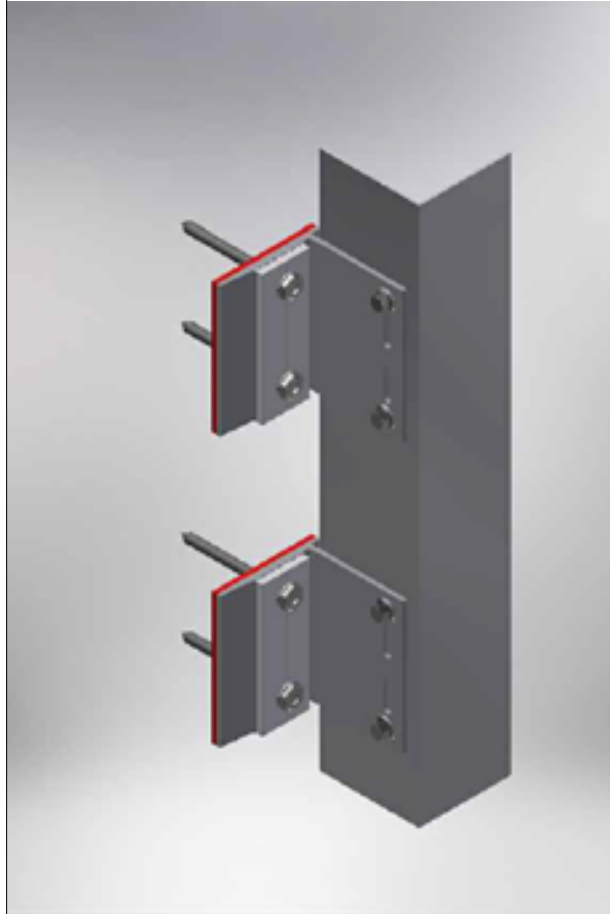

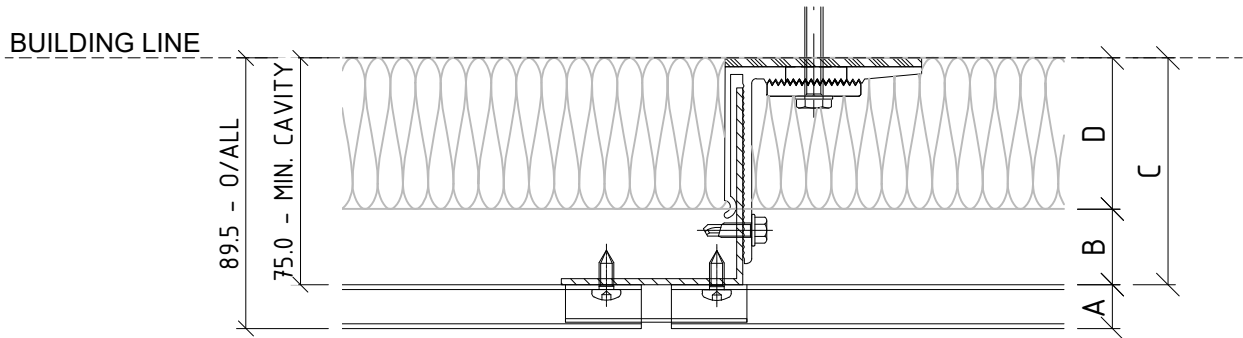
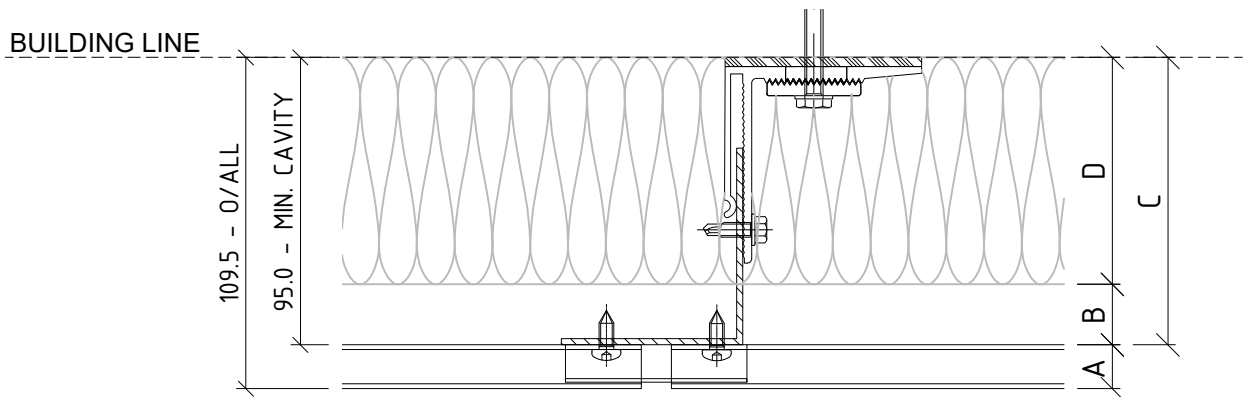


|  |                  |
|--|------------------|
| PART OF THE THERMOSASH GROUP COMPANIES :   |                  |
| <div>   </div>   |                  |
| <b>COPYRIGHT :</b> THESE DESIGNS, DETAILS AND/OR SPECIFICATIONS AND THE COPYRIGHT THEREIN, REMAIN THE PROPERTY OF THERMOSASH COMMERCIAL LIMITED.   |                  |
| <b>DISCLAIMER :</b> THESE DETAILS ARE PROVIDED FOR INDICATIVE PURPOSES ONLY. CONSTRUCTION/SYSTEM DETAILS CAN VARY DEPENDING ON PROJECT SPECIFIC SPECIFICATION AND ENGINEERING REQUIREMENTS. THE DESIGNER IS RESPONSIBLE FOR ENSURING DETAILS SATISFY ALL NEW ZEALAND BUILDING CODE CLAUSES. THE DESIGNER IS RESPONSIBLE FOR ENSURING BUILDING WRAPS, FIRESTOPS AND INSULATION/SPECIFICATION COMPLY WITH MANUFACTURERS RECOMMENDATIONS AND NZBC REGULATIONS. REFER TO THERMOSASH WEBSITE FOR FULL TERMS AND CONDITIONS. |                  |
|    |                  |
| Cladding Type :<br><b>ENCLAD™ EXTRUDED ALUMINIUM PLANKS - HORIZONTALLY LAID</b>  |                  |
| Support System :<br><b>ENCLAD™ EN01 - SECRET FIXED</b>   |                  |
| Detail Description :<br><b>COVER PAGE</b>  |                  |
| Scale @ A3 :   | Rev. : NOV 2022  |
| System # :<br>EXP-H-EN01-SF1   | Detail # :<br>00 |
| <b>ENCLAD™ RAINSCREEN SYSTEMS</b>  |                  |
| <div>  <div> 158 CENTRAL PARK DRIVE,<br/> HENDERSON,<br/> AUCKLAND 0610<br/> NEW ZEALAND<br/> <br/> P: +64 9 444 4944<br/> <a href="http://www.thermosash.co.nz">www.thermosash.co.nz</a> </div> </div>   |                  |

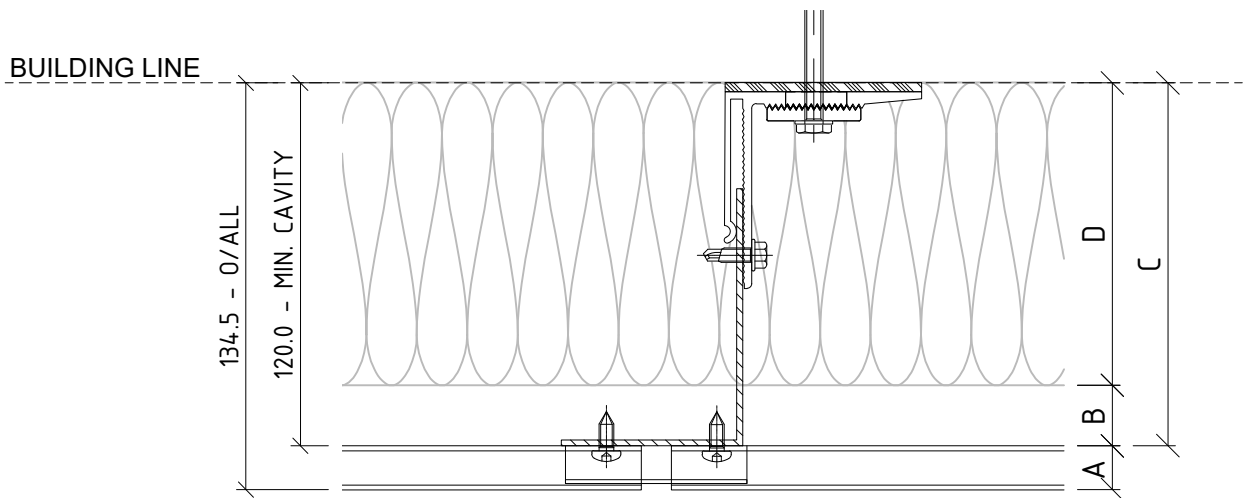
EN01 - ADJUSTABLE SYSTEM CAVITY



50mm THICK INSULATION  
IN CAVITY ZONE



75mm THICK INSULATION  
IN CAVITY ZONE



100mm THICK INSULATION  
IN CAVITY ZONE

01 CAVITY SET OUT  
ENCLAD<sup>TM</sup> EXTRUDED ALUMINIUM PLANKS

ADJUSTABLE SYSTEMS ACCOMODATE BUILDING TOLERANCE AND INCORPORATION  
OF INSULATION FOR H1 REQUIREMENTS - STANDARD SYSTEM CAVITY SHOWN -  
BESPOKE OPTIONS AVAILABLE FOR PROJECT SPECIFIC REQUIREMENTS

PART OF THE THERMOSASH GROUP COMPANIES :



**COPYRIGHT :** THESE DESIGNS, DETAILS AND/OR SPECIFICATIONS AND THE COPYRIGHT THEREIN, REMAIN THE PROPERTY OF THERMOSASH COMMERCIAL LIMITED.

**DISCLAIMER :** THESE DETAILS ARE PROVIDED FOR INDICATIVE PURPOSES ONLY. CONSTRUCTION/SYSTEM DETAILS CAN VARY DEPENDING ON PROJECT SPECIFIC SPECIFICATION AND ENGINEERING REQUIREMENTS. THE DESIGNER IS RESPONSIBLE FOR ENSURING DETAILS SATISFY ALL NEW ZEALAND BUILDING CODE CLAUSES. THE DESIGNER IS RESPONSIBLE FOR ENSURING BUILDING WRAPS, FIRESTOPS AND INSULATION/SPECIFICATION COMPLY WITH MANUFACTURERS RECOMMENDATIONS AND NZBC REGULATIONS. REFER TO THERMOSASH WEBSITE FOR FULL TERMS AND CONDITIONS.

| LEGEND |  |
|--------|--|
| A      | ENCLAD <sup>TM</sup> EXTRUDED ALUMINIUM PLANKS   |
| B      | 20mm - 25mm NOMINAL VENTILATION ZONE (AIR GAP)   |
| C      | * 75mm SYSTEM CAVITY TO ACCOMMODATE 50mm THICK INSULATION  |
| D      | * 50mm INSULATION (OPTION BY INSITE)<br>FIRE STOP (OPTION BY INSITE)   |
| *      | OTHER OPTIONS AVAILABLE (PROJECT SPECIFIC)<br>95mm SYSTEM CAVITY FOR 75mm THICK INSULATION<br>120mm SYSTEM CAVITY FOR 100mm THICK INSULATION |

Cladding Type :  
**ENCLAD<sup>TM</sup> EXTRUDED ALUMINIUM PLANKS - HORIZONTALLY LAID**

Support System :  
**ENCLAD<sup>TM</sup> EN01 - SECRET FIXED**

Detail Description :  
CAVITY SETOUT (PLAN VIEW)

Scale @ A3 : 1:2.5

Rev. : NOV 2022

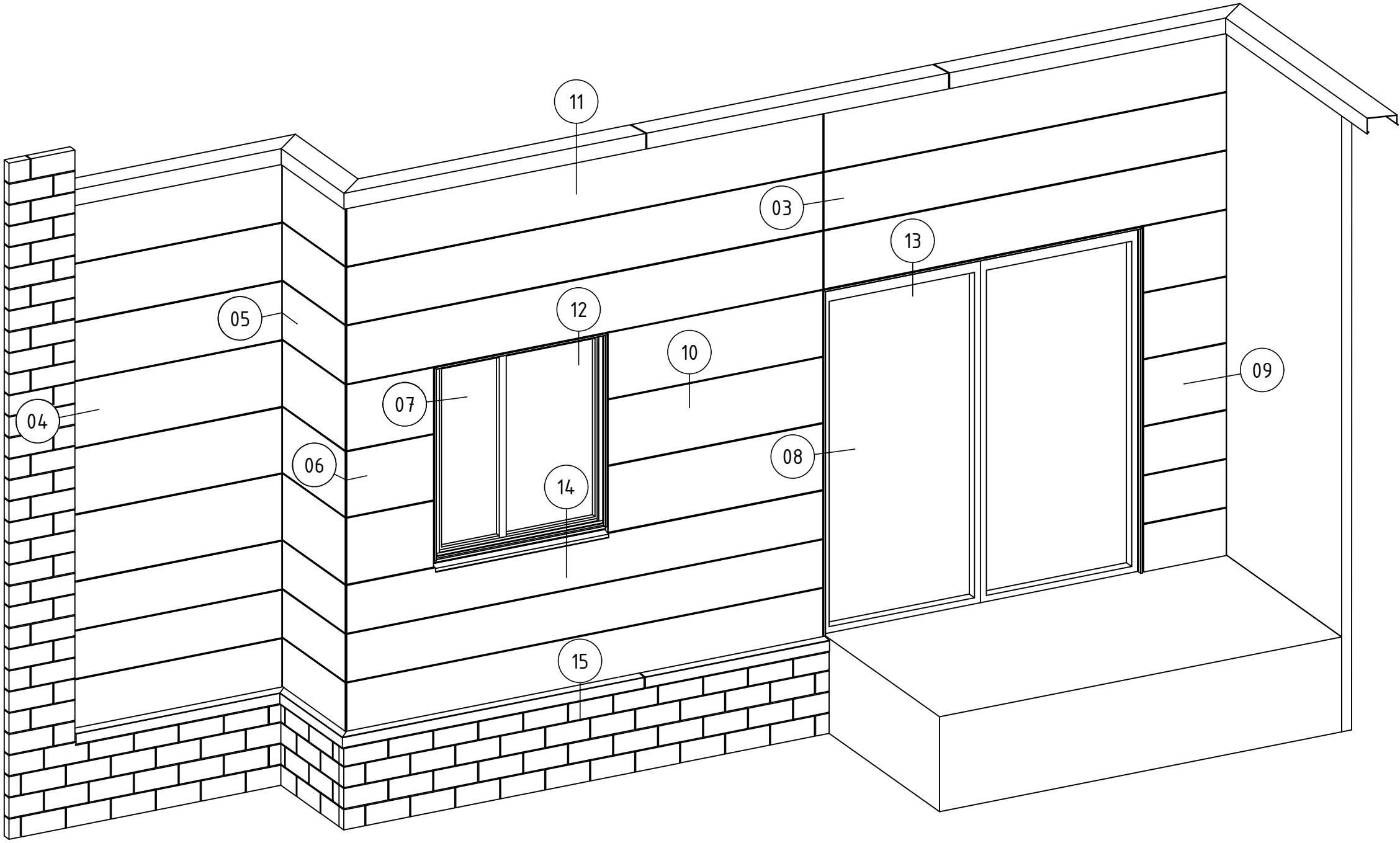
System # :  
EXP-H-EN01-SF1

Detail # :  
01

**ENCLAD<sup>TM</sup> RAINSCREEN SYSTEMS**



158 CENTRAL PARK DRIVE,  
HENDERSON,  
AUCKLAND 0610  
NEW ZEALAND  
P: +64 9 444 4944  
[www.thermosash.co.nz](http://www.thermosash.co.nz)



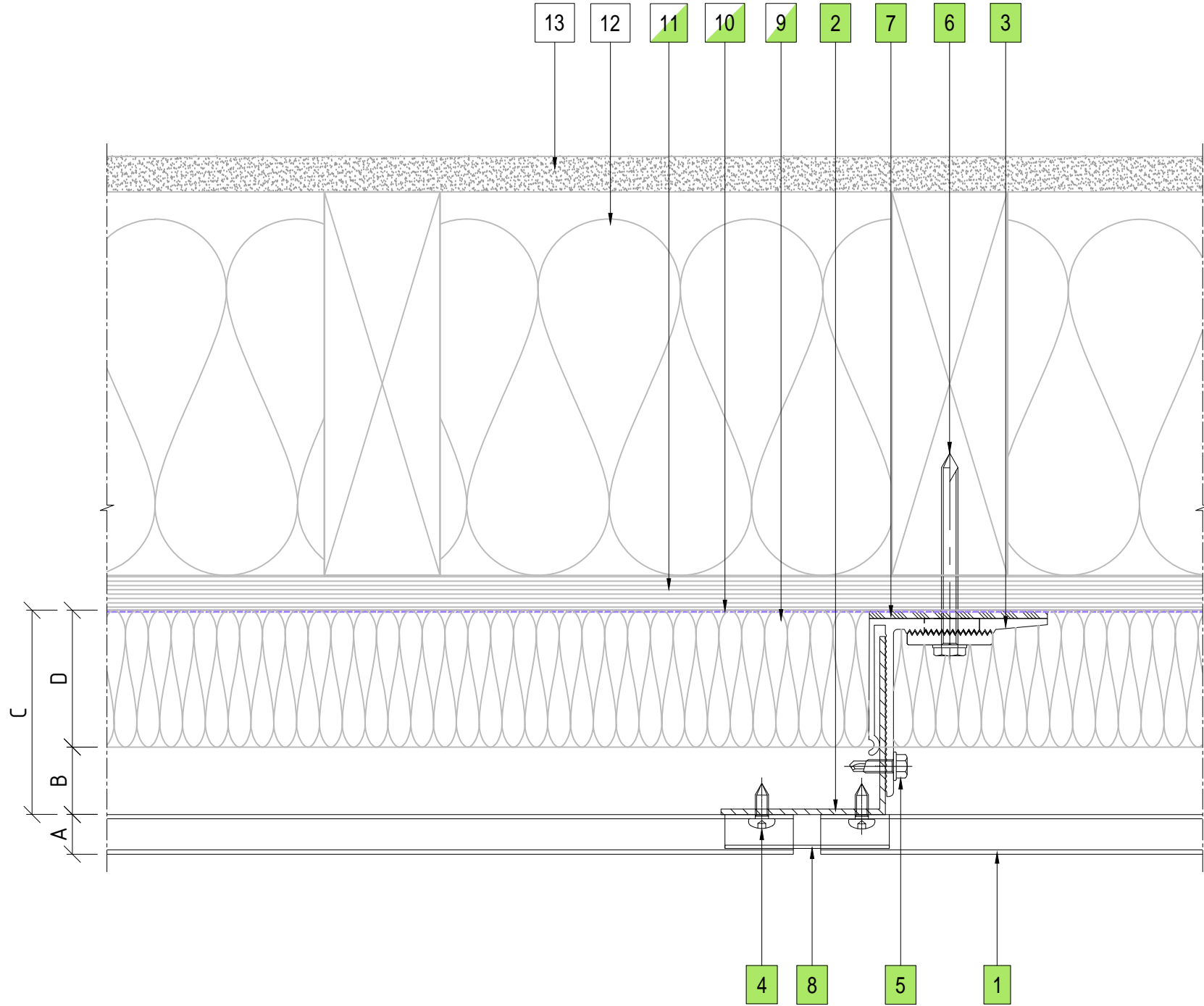
02 SCHEMATIC  
ENCLAD<sup>TM</sup> EXTRUDED ALUMINIUM PLANKS

Cladding Type :  
**ENCLAD<sup>TM</sup> EXTRUDED ALUMINIUM PLANKS - HORIZONTALLY LAID**

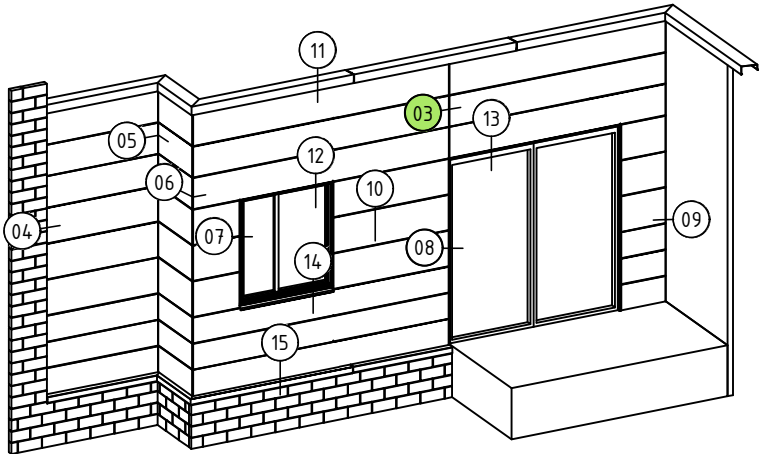
Support System :  
**ENCLAD<sup>TM</sup> EN01 - SECRET FIXED**

Detail Description :  
SCHEMATIC


|                              |                  |
|------------------------------|------------------|
| Scale @ A3 : 1:5             | Rev. : NOV 2022  |
| System # :<br>EXP-H-EN01-SF1 | Detail # :<br>02 |




03 VERTICAL PANEL JOINT DETAIL  
ENCLAD™ EXTRUDED ALUMINIUM PLANKS



Part of the Thermosash Group Companies:



Thermosash  
BUILDING ENVELOPE SOLUTIONS™



WoodsGlass  
BUILDING INNOVATIVE GLAZING SOLUTIONS

**COPYRIGHT :** THESE DESIGNS, DETAILS AND/OR SPECIFICATIONS AND THE COPYRIGHT THEREIN, REMAIN THE PROPERTY OF THERMOSASH COMMERCIAL LIMITED.

**DISCLAIMER :** THESE DETAILS ARE PROVIDED FOR INDICATIVE PURPOSES ONLY. CONSTRUCTION/SYSTEM DETAILS CAN VARY DEPENDING ON PROJECT SPECIFIC SPECIFICATION AND ENGINEERING REQUIREMENTS. THE DESIGNER IS RESPONSIBLE FOR ENSURING DETAILS SATISFY ALL NEW ZEALAND BUILDING CODE CLAUSES. THE DESIGNER IS RESPONSIBLE FOR ENSURING BUILDING WRAPS, FIRESTOPS AND INSULATION/SPECIFICATION COMPLY WITH MANUFACTURERS RECOMMENDATIONS AND NZBC REGULATIONS. REFER TO THERMOSASH WEBSITE FOR FULL TERMS AND CONDITIONS.

LEGEND

|   |  |
|---|--|
| A | ENCLAD™ EXTRUDED ALUMINIUM PLANKS  |
| B | 20mm - 25mm NOMINAL VENTILATION ZONE (AIR GAP)   |
| C | * 75mm SYSTEM CAVITY TO ACCOMMODATE 50mm THICK INSULATION  |
| D | * 50mm INSULATION (OPTION BY INSITE)<br>FIRE STOP (OPTION BY INSITE)   |
| * | OTHER OPTIONS AVAILABLE (PROJECT SPECIFIC)<br>95mm SYSTEM CAVITY FOR 75mm THICK INSULATION<br>120mm SYSTEM CAVITY FOR 100mm THICK INSULATION |

PARTS LIST

|    |  |
|----|--|
| 1  | ENCLAD™ EXTRUDED ALUMINIUM PLANKS                      |
| 2  | ENCLAD EN01 ALUMINIUM SUPPORT PROFILE                  |
| 3  | ENCLAD EN01 ALUMINIUM HELPING HAND BRACKET             |
| 4  | ENCLAD PANEL FIXING (STAINLESS STEEL)                  |
| 5  | ENCLAD BRACKET TO RAIL FIXING (STAINLESS STEEL)        |
| 6  | ENCLAD HOST STRUCTURAL FIXING (STAINLESS STEEL)        |
| 7  | ENCLAD THERMAL ISOLATION PAD                           |
| 8  | ENCLAD ALUMINIUM JOINT PROFILE                         |
| 9  | CAVITY INSULATION (OPTION BY INSITE)                   |
| 10 | BUILDING WRAP / MEMBRANE (OPTION BY INSITE)            |
| 11 | RIGID AIR BARRIER / SHEATHING BOARD (OPTION BY INSITE) |
| 12 | WALL INSULATION (BY OTHERS)                            |
| 13 | PLASTER BOARD (BY OTHERS)                              |
|    |  |
|    |  |
|    |  |
|    |  |
|    |  |
|    |  |
|    |  |
|    |  |
|    |  |
|    |  |
|    |  |

Cladding Type :  
**ENCLAD™ EXTRUDED ALUMINIUM PLANKS - HORIZONTALLY LAID**

Support System :  
**ENCLAD™ EN01 - SECRET FIXED**

Detail Description :  
VERTICAL PANEL JOINT DETAIL (PLAN VIEW)


Scale @ A3 : 1:2

Rev. : NOV 2022

System # :  
EXP-H-EN01-SF1

Detail # :  
03

ENCLAD™ RAINSCREEN SYSTEMS



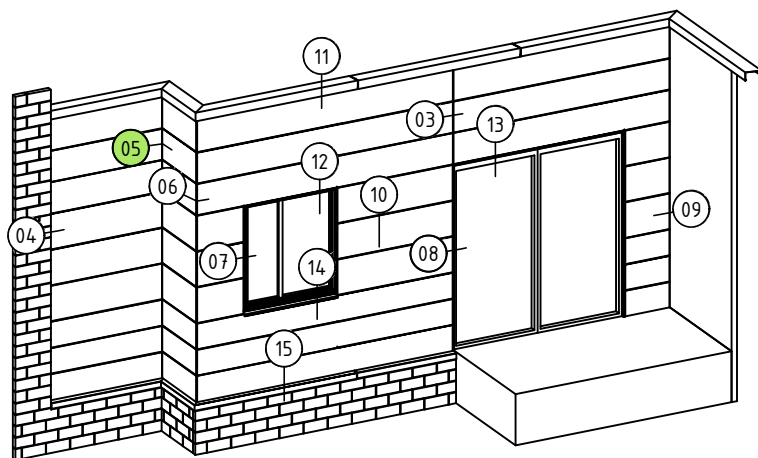
Thermosash  
BUILDING ENVELOPE SOLUTIONS™

158 CENTRAL PARK DRIVE,  
HENDERSON,  
AUCKLAND 0610  
NEW ZEALAND

P: +64 9 444 4944  
[www.thermosash.co.nz](http://www.thermosash.co.nz)

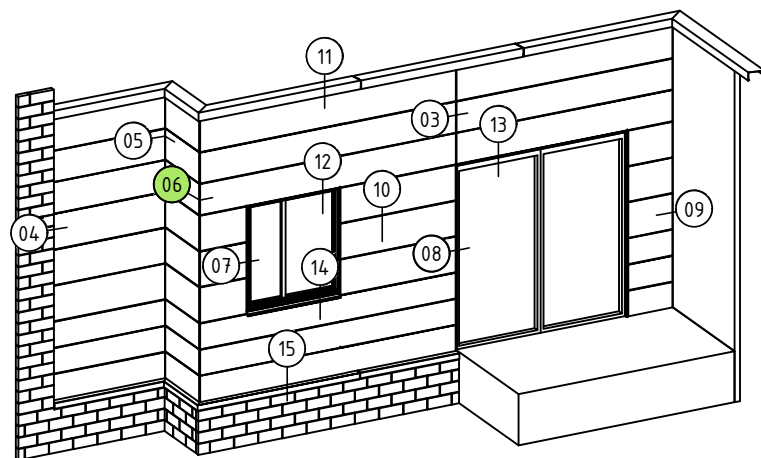
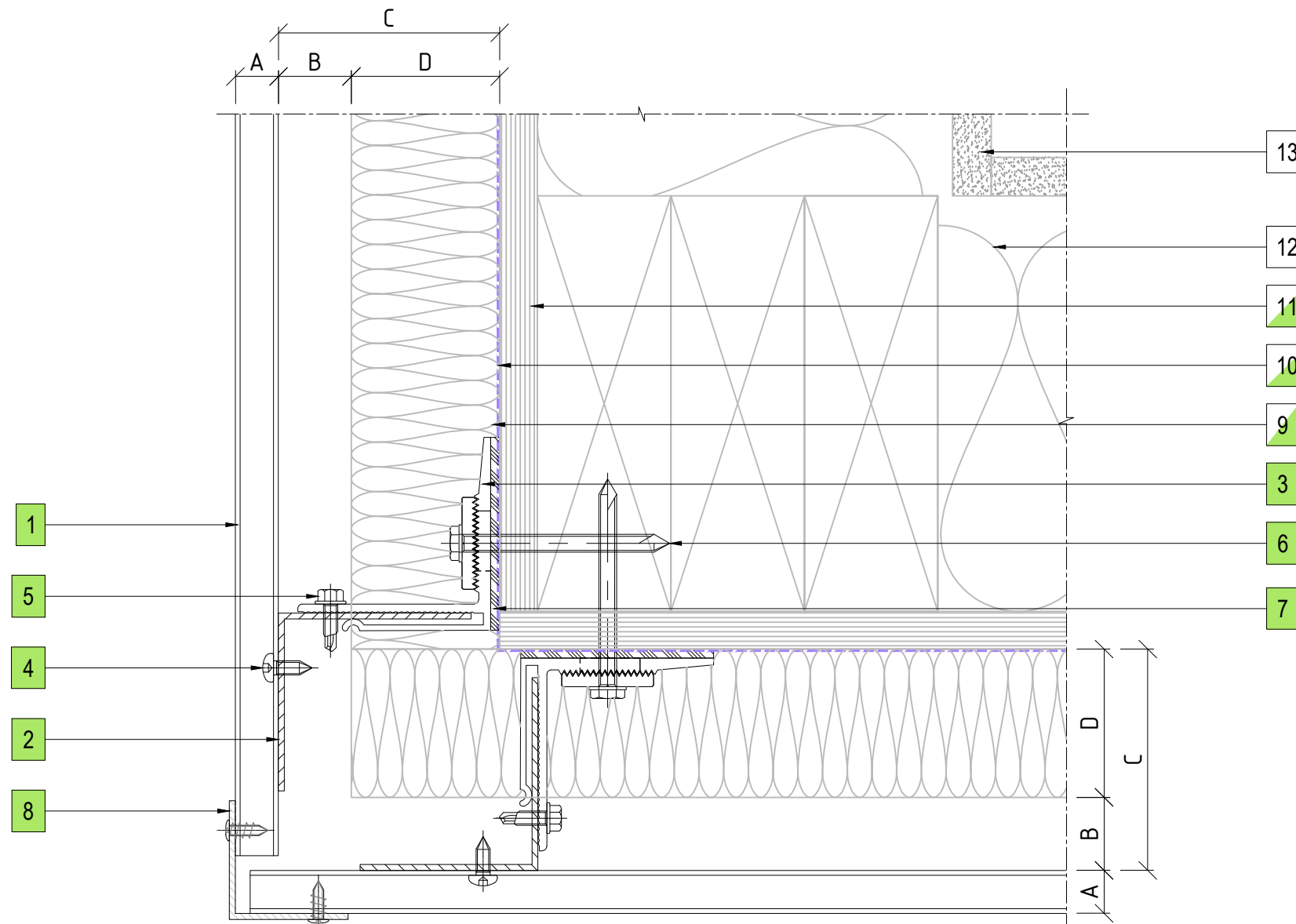






## 05 INTERNAL CORNER PANEL DETAIL

### ENCLAD™ EXTRUDED ALUMINIUM PLANKS



06 EXTERNAL CORNER PANEL DETAIL  
ENCLAD™ EXTRUDED ALUMINIUM PLANKS

**COPYRIGHT :** THESE DESIGNS, DETAILS AND/OR SPECIFICATIONS AND THE COPYRIGHT THEREIN, REMAIN THE PROPERTY OF THERMOSASH COMMERCIAL LIMITED.

**DISCLAIMER :** THESE DETAILS ARE PROVIDED FOR INDICATIVE PURPOSES ONLY. CONSTRUCTION/SYSTEM DETAILS CAN VARY DEPENDING ON PROJECT SPECIFIC SPECIFICATION AND ENGINEERING REQUIREMENTS. THE DESIGNER IS RESPONSIBLE FOR ENSURING DETAILS SATISFY ALL NEW ZEALAND BUILDING CODE CLAUSES. THE DESIGNER IS RESPONSIBLE FOR ENSURING BUILDING WRAPS, FIRESTOPS AND INSULATION/SPECIFICATION COMPLY WITH MANUFACTURERS RECOMMENDATIONS AND NZBC REGULATIONS. REFER TO THERMOSASH WEBSITE FOR FULL TERMS AND CONDITIONS.

### LEGEND

|   |  |
|---|--|
| A | ENCLAD™ EXTRUDED ALUMINIUM PLANKS  |
| B | 20mm - 25mm NOMINAL VENTILATION ZONE (AIR GAP)   |
| C | * 75mm SYSTEM CAVITY TO ACCOMMODATE 50mm THICK INSULATION  |
| D | * 50mm INSULATION (OPTION BY INSITE)<br>FIRE STOP (OPTION BY INSITE)   |
| * | OTHER OPTIONS AVAILABLE (PROJECT SPECIFIC)<br>95mm SYSTEM CAVITY FOR 75mm THICK INSULATION<br>120mm SYSTEM CAVITY FOR 100mm THICK INSULATION |

## PARTS LIST

|    |  |
|----|--|
| 1  | ENCLAD™ EXTRUDED ALUMINIUM PLANKS                      |
| 2  | ENCLAD EN01 ALUMINIUM SUPPORT PROFILE                  |
| 3  | ENCLAD EN01 ALUMINIUM HELPING HAND BRACKET             |
| 4  | ENCLAD PANEL FIXING (STAINLESS STEEL)                  |
| 5  | ENCLAD BRACKET TO RAIL FIXING (STAINLESS STEEL)        |
| 6  | ENCLAD HOST STRUCTURAL FIXING (STAINLESS STEEL)        |
| 7  | ENCLAD THERMAL ISOLATION PAD                           |
| 8  | ENCLAD ALUMINIUM CLOSURE                               |
| 9  | CAVITY INSULATION (OPTION BY INSITE)                   |
| 10 | BUILDING WRAP / MEMBRANE (OPTION BY INSITE)            |
| 11 | RIGID AIR BARRIER / SHEATHING BOARD (OPTION BY INSITE) |
| 12 | WALL INSULATION (BY OTHERS)                            |
| 13 | PLASTER BOARD (BY OTHERS)                              |

Cladding Type :

## ENCLAD™ EXTRUDED ALUMINIUM PLANKS - HORIZONTALLY LAID

Support System :

**ENCLAD™ EN01 - SECRET FIXED**

Detail Description :

### EXTERNAL CORNER PANEL DETAIL (PLAN VIEW)

Scale @ A3 : 1:2

Rev. : NOV 2022

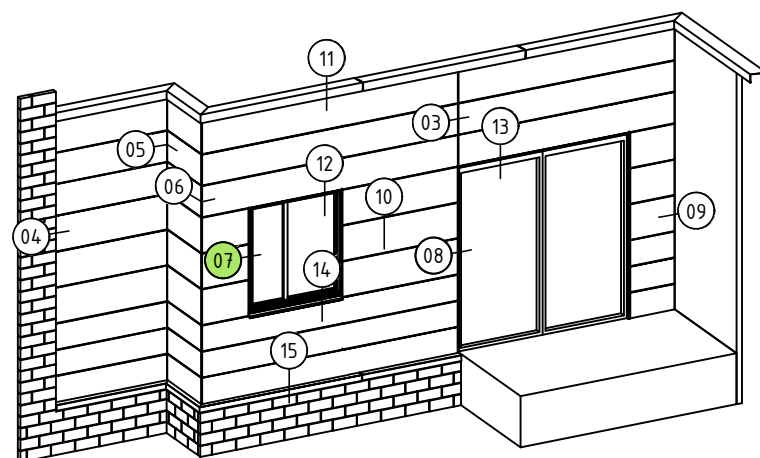
System # :

EXP-H-EN01-SF1

Detail # :

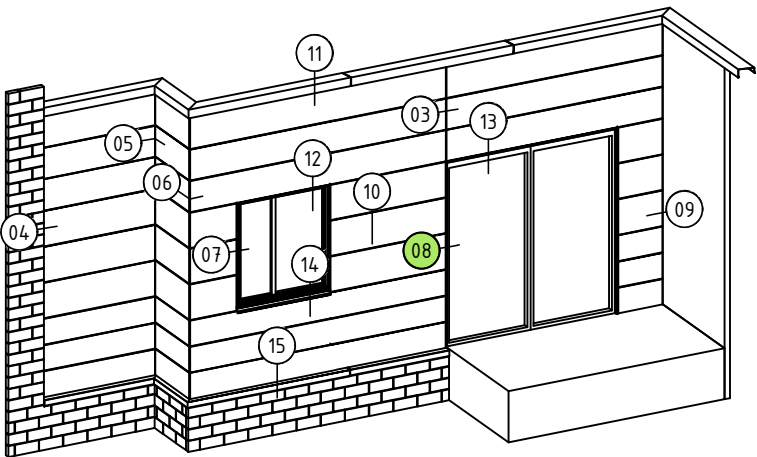
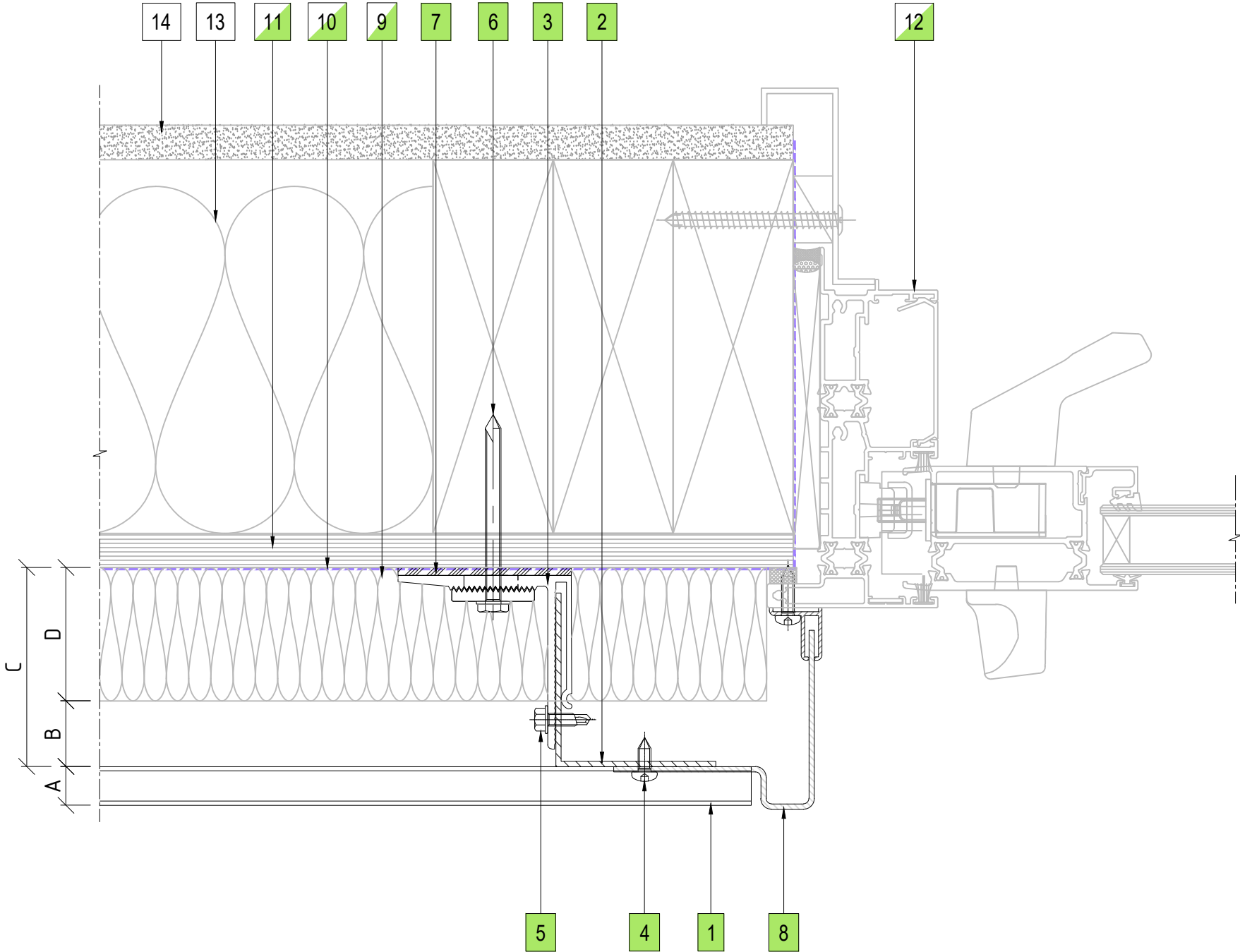
06

**ENCLAD™ RAINSCREEN SYSTEMS**



P: +64 9 444 4944  
[www.thermosash.co.nz](http://www.thermosash.co.nz)





08 DOOR JAMB DETAIL  
ENCLAD™ EXTRUDED ALUMINIUM PLANKS

Thermosash

WOODSGlass

Thermosash

WOODSGlass

**COPYRIGHT :** THESE DESIGNS, DETAILS AND/OR SPECIFICATIONS AND THE COPYRIGHT THEREIN, REMAIN THE PROPERTY OF THERMOSASH COMMERCIAL LIMITED.

**DISCLAIMER :** THESE DETAILS ARE PROVIDED FOR INDICATIVE PURPOSES ONLY. CONSTRUCTION/SYSTEM DETAILS CAN VARY DEPENDING ON PROJECT SPECIFIC SPECIFICATION AND ENGINEERING REQUIREMENTS. THE DESIGNER IS RESPONSIBLE FOR ENSURING DETAILS SATISFY ALL NEW ZEALAND BUILDING CODE CLAUSES. THE DESIGNER IS RESPONSIBLE FOR ENSURING BUILDING WRAPS, FIRESTOPS AND INSULATION/SPECIFICATION COMPLY WITH MANUFACTURERS RECOMMENDATIONS AND NZBC REGULATIONS. REFER TO THERMOSASH WEBSITE FOR FULL TERMS AND CONDITIONS.

LEGEND

|   |  |
|---|--|
| A | ENCLAD™ EXTRUDED ALUMINIUM PLANKS  |
| B | 20mm - 25mm NOMINAL VENTILATION ZONE (AIR GAP)   |
| C | * 75mm SYSTEM CAVITY TO ACCOMMODATE 50mm THICK INSULATION  |
| D | * 50mm INSULATION (OPTION BY INSITE)<br>FIRE STOP (OPTION BY INSITE)   |
| * | OTHER OPTIONS AVAILABLE (PROJECT SPECIFIC)<br>95mm SYSTEM CAVITY FOR 75mm THICK INSULATION<br>120mm SYSTEM CAVITY FOR 100mm THICK INSULATION |

PARTS LIST

|    |  |
|----|--|
| 1  | ENCLAD™ EXTRUDED ALUMINIUM PLANKS                      |
| 2  | ENCLAD EN01 ALUMINIUM SUPPORT PROFILE                  |
| 3  | ENCLAD EN01 ALUMINIUM HELPING HAND BRACKET             |
| 4  | ENCLAD PANEL FIXING (STAINLESS STEEL)                  |
| 5  | ENCLAD BRACKET TO RAIL FIXING (STAINLESS STEEL)        |
| 6  | ENCLAD HOST STRUCTURAL FIXING (STAINLESS STEEL)        |
| 7  | ENCLAD THERMAL ISOLATION PAD                           |
| 8  | ENCLAD ALUMINIUM CLOSURE ANGLE                         |
| 9  | CAVITY INSULATION (OPTION BY INSITE)                   |
| 10 | BUILDING WRAP / MEMBRANE (OPTION BY INSITE)            |
| 11 | RIGID AIR BARRIER / SHEATHING BOARD (OPTION BY INSITE) |
| 12 | ALUMINIUM DOORS, WINDOWS & REVEALS (OPTION BY INSITE)  |
| 13 | WALL INSULATION (BY OTHERS)                            |
| 14 | PLASTER BOARD (BY OTHERS)                              |
|    |  |
|    |  |
|    |  |
|    |  |
|    |  |
|    |  |
|    |  |
|    |  |

Cladding Type :  
**ENCLAD™ EXTRUDED ALUMINIUM PLANKS - HORIZONTALLY LAID**

Support System :  
**ENCLAD™ EN01 - SECRET FIXED**

Detail Description :  
**DOOR JAMB DETAIL (PLAN VIEW)**

Scale @ A3 : 1:2

Rev. : NOV 2022

System # :  
EXP-H-EN01-SF1

Detail # :  
08

ENCLAD™ RAINSCREEN SYSTEMS

Thermosash

WOODSGlass

158 CENTRAL PARK DRIVE,  
HENDERSON,  
AUCKLAND 0610  
NEW ZEALAND

P: +64 9 444 4944

www.thermosash.co.nz

**COPYRIGHT :** THESE DESIGNS, DETAILS AND/OR SPECIFICATIONS AND THE COPYRIGHT THEREIN, REMAIN THE PROPERTY OF THERMOSASH COMMERCIAL LIMITED.

**DISCLAIMER :** THESE DETAILS ARE PROVIDED FOR INDICATIVE PURPOSES ONLY. CONSTRUCTION/SYSTEM DETAILS CAN VARY DEPENDING ON PROJECT SPECIFIC SPECIFICATION AND ENGINEERING REQUIREMENTS. THE DESIGNER IS RESPONSIBLE FOR ENSURING DETAILS SATISFY ALL NEW ZEALAND BUILDING CODE CLAUSES. THE DESIGNER IS RESPONSIBLE FOR ENSURING BUILDING WRAPS, FIRESTOPS AND INSULATION/SPECIFICATION COMPLY WITH MANUFACTURERS RECOMMENDATIONS AND NZBC REGULATIONS. REFER TO THERMOSASH WEBSITE FOR FULL TERMS AND CONDITIONS.

### LEGEND

|   |  |
|---|--|
| A | ENCLAD™ EXTRUDED ALUMINIUM PLANKS  |
| B | 20mm - 25mm NOMINAL VENTILATION ZONE (AIR GAP)   |
| C | * 75mm SYSTEM CAVITY TO ACCOMMODATE 50mm THICK INSULATION  |
| D | * 50mm INSULATION (OPTION BY INSITE)<br>FIRE STOP (OPTION BY INSITE)   |
| * | OTHER OPTIONS AVAILABLE (PROJECT SPECIFIC)<br>95mm SYSTEM CAVITY FOR 75mm THICK INSULATION<br>120mm SYSTEM CAVITY FOR 100mm THICK INSULATION |

## PARTS LIST

[illegible]

Cladding Type :

## ENCLAD™ EXTRUDED ALUMINIUM PLANKS - HORIZONTALLY LAID

Support System :

**ENCLAD™ EN01 - SECRET FIXED**

Detail Description :

**CONCRETE WALL ABUTMENT DETAIL (PLAN VIEW)**

Scale @ A3 : 1:2

Rev. : NOV 2022

System # :

|            |  |
|------------|--|
| Detail # : |  |
|------------|--|

EXP-H-EN01-SF1

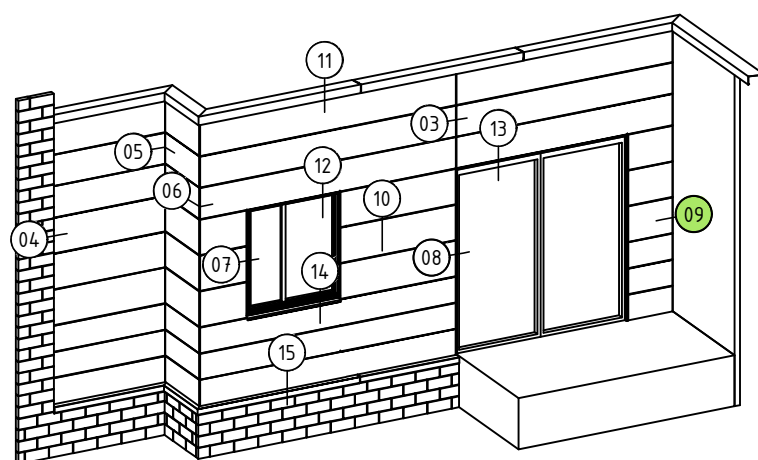
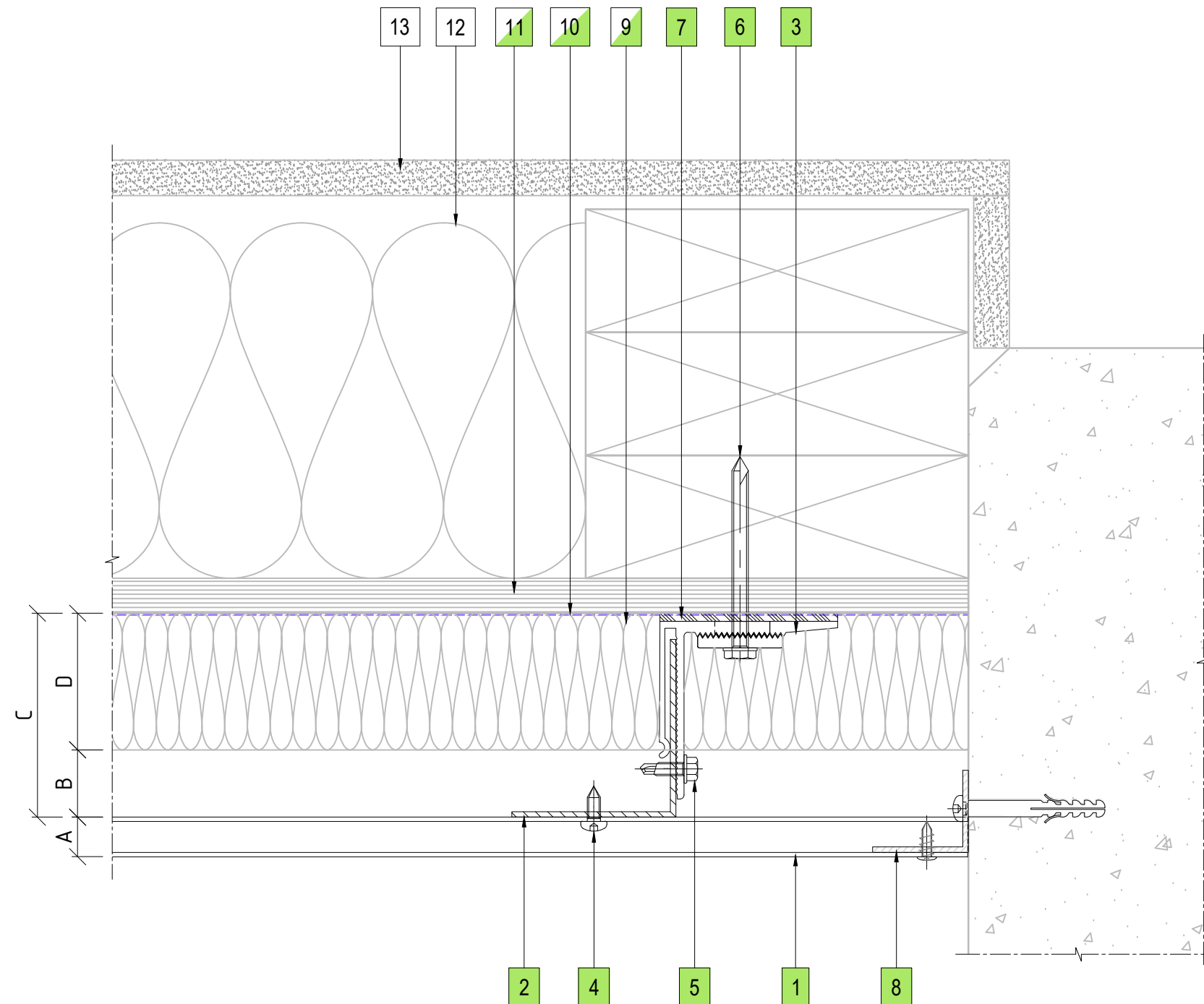
09

**ENCLAD™ RAINSCREEN SYSTEMS**



158 CENTRAL PARK DRIVE,  
HENDERSON,  
AUCKLAND 0610  
NEW ZEALAND

P: +64 9 444 4944  
[www.thermosash.co.nz](http://www.thermosash.co.nz)



09 CONCRETE WALL ABUTMENT DETAIL  
ENCLAD™ EXTRUDED ALUMINIUM PLANKS

**COPYRIGHT :** THESE DESIGNS, DETAILS AND/OR SPECIFICATIONS AND THE COPYRIGHT THEREIN, REMAIN THE PROPERTY OF THERMOSASH COMMERCIAL LIMITED.

**DISCLAIMER :** THESE DETAILS ARE PROVIDED FOR INDICATIVE PURPOSES ONLY. CONSTRUCTION/SYSTEM DETAILS CAN VARY DEPENDING ON PROJECT SPECIFIC SPECIFICATION AND ENGINEERING REQUIREMENTS. THE DESIGNER IS RESPONSIBLE FOR ENSURING DETAILS SATISFY ALL NEW ZEALAND BUILDING CODE CLAUSES. THE DESIGNER IS RESPONSIBLE FOR ENSURING BUILDING WRAPS, FIRESTOPS AND INSULATION/SPECIFICATION COMPLY WITH MANUFACTURERS RECOMMENDATIONS AND NZBC REGULATIONS. REFER TO THERMOSASH WEBSITE FOR FULL TERMS AND CONDITIONS.

### LEGEND

|   |  |
|---|--|
| A | ENCLAD™ EXTRUDED ALUMINIUM PLANKS  |
| B | 20mm - 25mm NOMINAL VENTILATION ZONE (AIR GAP)   |
| C | * 75mm SYSTEM CAVITY TO ACCOMMODATE 50mm THICK INSULATION  |
| D | * 50mm INSULATION (OPTION BY INSITE)<br>FIRE STOP (OPTION BY INSITE)   |
| * | OTHER OPTIONS AVAILABLE (PROJECT SPECIFIC)<br>95mm SYSTEM CAVITY FOR 75mm THICK INSULATION<br>120mm SYSTEM CAVITY FOR 100mm THICK INSULATION |

## PARTS LIST

[illegible]

Cladding Type :

## ENCLAD™ EXTRUDED ALUMINIUM PLANKS - HORIZONTALLY LAID

Support System :

**ENCLAD™ EN01 - SECRET FIXED**

Detail Description :

**HORIZONTAL PANEL JOINT DETAIL (SECTION VIEW)**

Scale @ A3 : 1:2

Rev.: NOV 2022

System # :

|            |  |
|------------|--|
| Detail # : |  |
|------------|--|

EXP-H-EN01-SF1

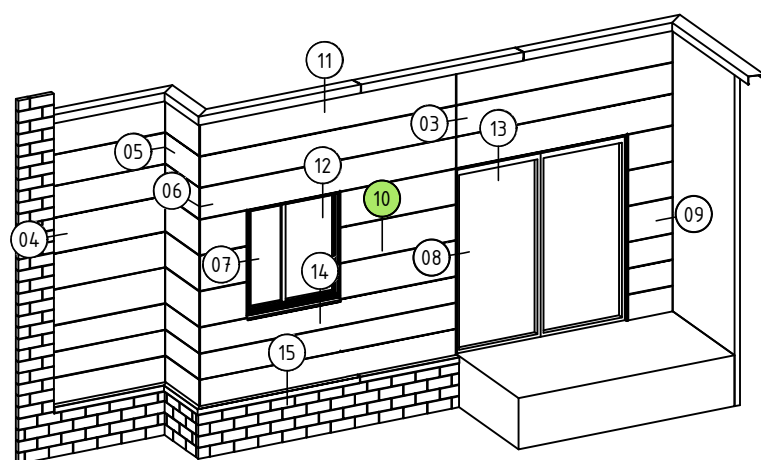
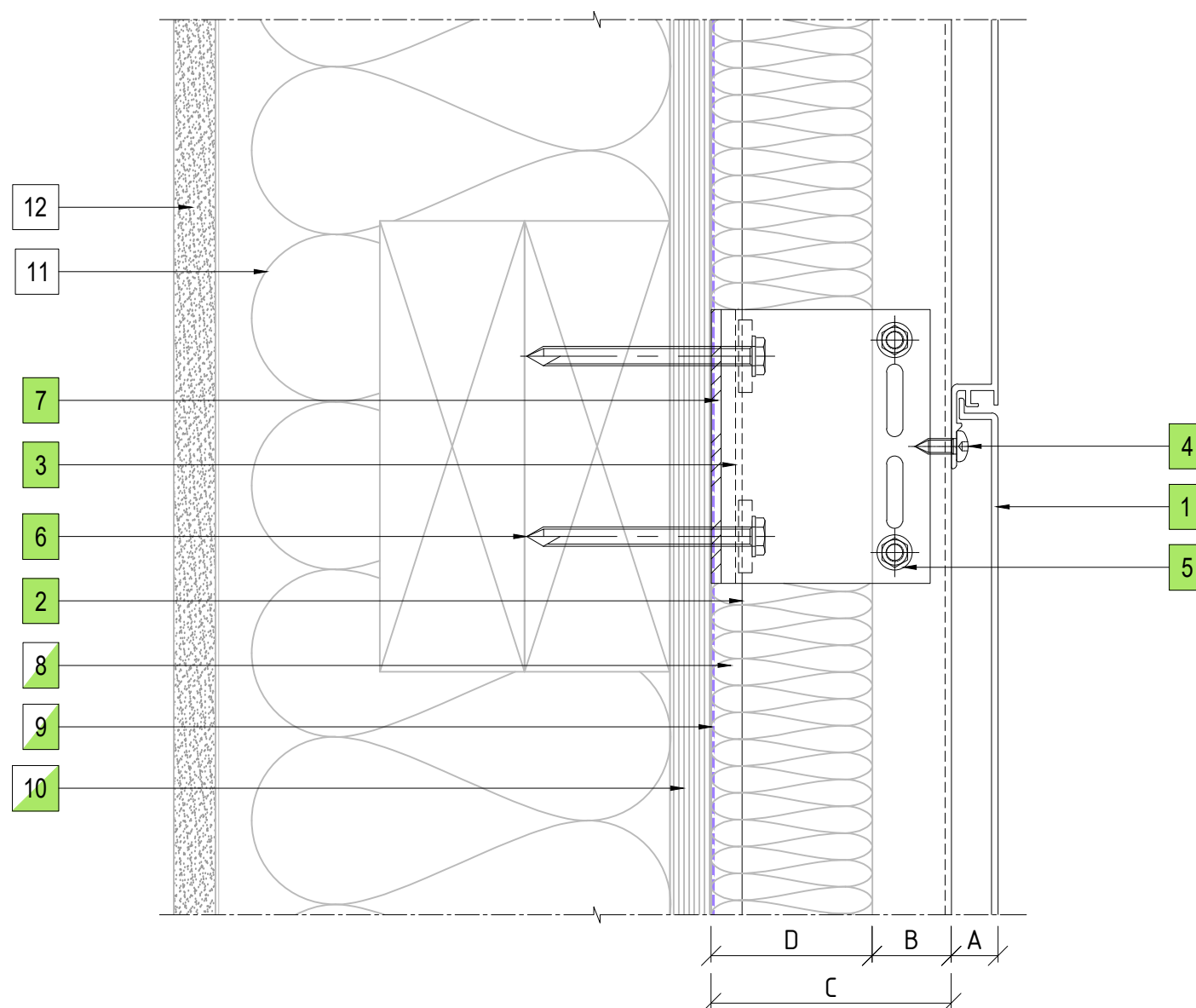
10

ENCLAD™ RAINSCREEN SYSTEMS

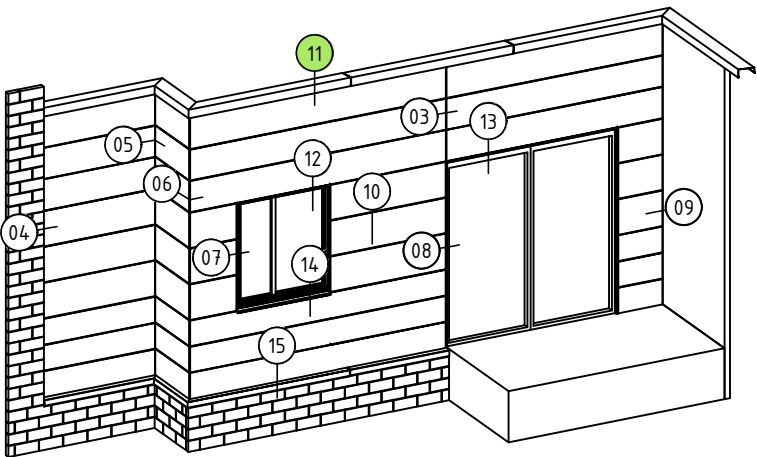
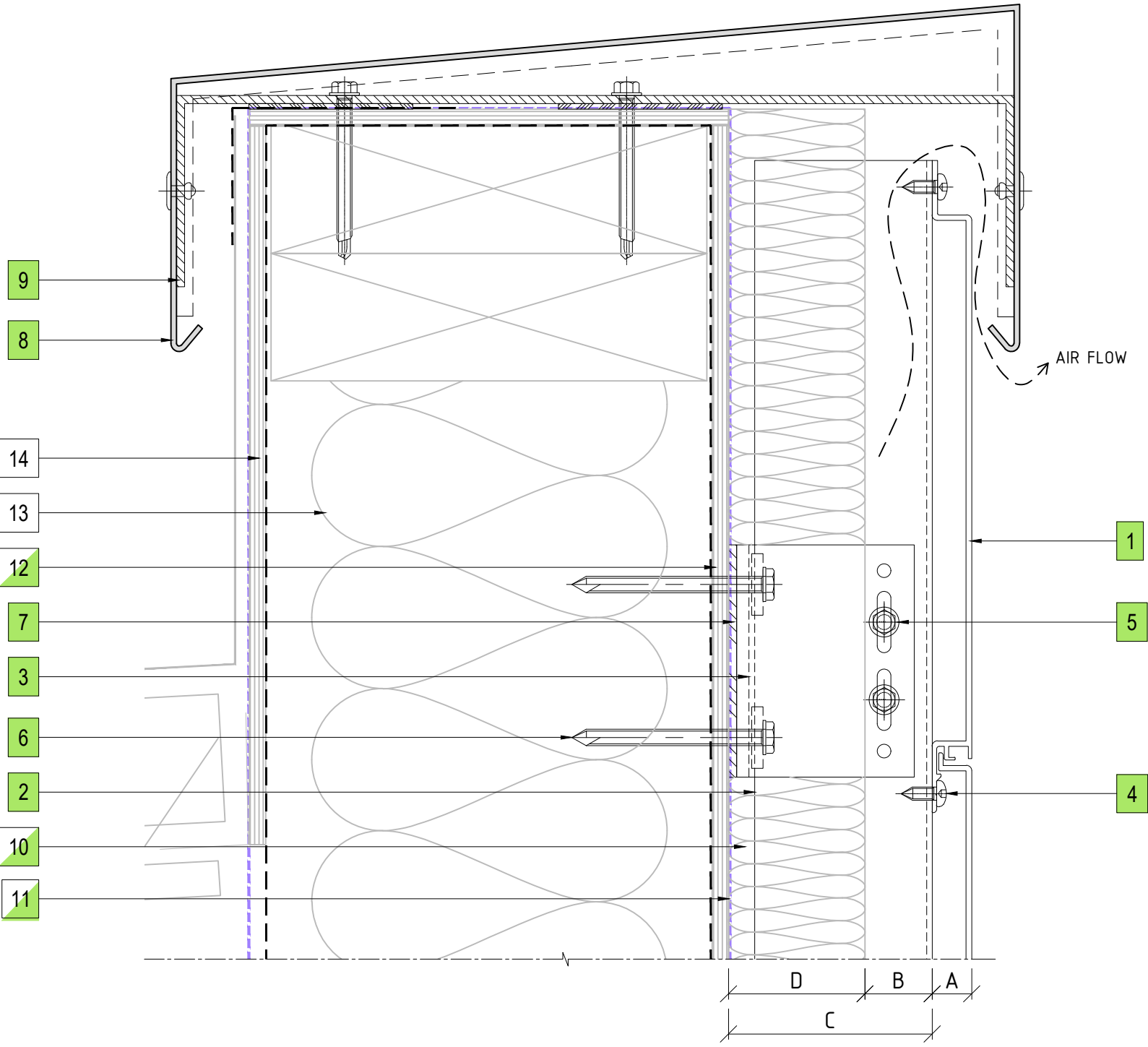


158 CENTRAL PARK DRIVE,  
HENDERSON,  
AUCKLAND 0610  
NEW ZEALAND

P: +64 9 444 4944  
[www.thermosash.co.nz](http://www.thermosash.co.nz)




10 HORIZONTAL PANEL JOINT DETAIL  
ENCLAD™ EXTRUDED ALUMINIUM PLANKS




11 PARAPET FLASHING DETAIL  
ENCLAD™ EXTRUDED ALUMINIUM PLANKS

PART OF THE THERMOSASH GROUP COMPANIES :



Thermosash

BUILDING ENVELOPE SOLUTIONS™



WoodsGlass

BUILDING INNOVATIVE GLAZING SOLUTIONS

**COPYRIGHT :** THESE DESIGNS, DETAILS AND/OR SPECIFICATIONS AND THE COPYRIGHT THEREIN, REMAIN THE PROPERTY OF THERMOSASH COMMERCIAL LIMITED.

**DISCLAIMER :** THESE DETAILS ARE PROVIDED FOR INDICATIVE PURPOSES ONLY. CONSTRUCTION/SYSTEM DETAILS CAN VARY DEPENDING ON PROJECT SPECIFIC SPECIFICATION AND ENGINEERING REQUIREMENTS. THE DESIGNER IS RESPONSIBLE FOR ENSURING DETAILS SATISFY ALL NEW ZEALAND BUILDING CODE CLAUSES. THE DESIGNER IS RESPONSIBLE FOR ENSURING BUILDING WRAPS, FIRESTOPS AND INSULATION/SPECIFICATION COMPLY WITH MANUFACTURERS RECOMMENDATIONS AND NZBC REGULATIONS. REFER TO THERMOSASH WEBSITE FOR FULL TERMS AND CONDITIONS.

LEGEND

|   |  |
|---|--|
| A | ENCLAD™ EXTRUDED ALUMINIUM PLANKS  |
| B | 20mm - 25mm NOMINAL VENTILATION ZONE (AIR GAP)   |
| C | * 75mm SYSTEM CAVITY TO ACCOMMODATE 50mm THICK INSULATION  |
| D | * 50mm INSULATION (OPTION BY INSITE)<br>FIRE STOP (OPTION BY INSITE)   |
| * | OTHER OPTIONS AVAILABLE (PROJECT SPECIFIC)<br>95mm SYSTEM CAVITY FOR 75mm THICK INSULATION<br>120mm SYSTEM CAVITY FOR 100mm THICK INSULATION |

PARTS LIST

|    |  |
|----|--|
| 1  | ENCLAD™ EXTRUDED ALUMINIUM PLANKS                      |
| 2  | ENCLAD EN01 ALUMINIUM SUPPORT PROFILE                  |
| 3  | ENCLAD EN01 ALUMINIUM HELPING HAND BRACKET             |
| 4  | ENCLAD PANEL FIXING (STAINLESS STEEL)                  |
| 5  | ENCLAD BRACKET TO RAIL FIXING (STAINLESS STEEL)        |
| 6  | ENCLAD HOST STRUCTURAL FIXING (STAINLESS STEEL)        |
| 7  | ENCLAD THERMAL ISOLATION PAD                           |
| 8  | ENCLAD ALUMINIUM FLASHING                              |
| 9  | ENCLAD ALUMINIUM BRACKET                               |
| 10 | CAVITY INSULATION (OPTION BY INSITE)                   |
| 11 | BUILDING WRAP / MEMBRANE (OPTION BY INSITE)            |
| 12 | RIGID AIR BARRIER / SHEATHING BOARD (OPTION BY INSITE) |
| 13 | WALL INSULATION (BY OTHERS)                            |
| 14 | PLASTER BOARD (BY OTHERS)                              |
|    |  |
|    |  |
|    |  |
|    |  |
|    |  |
|    |  |
|    |  |
|    |  |
|    |  |
|    |  |

Cladding Type :  
**ENCLAD™ EXTRUDED ALUMINIUM PLANKS - HORIZONTALLY LAID**

Support System :  
**ENCLAD™ EN01 - SECRET FIXED**

Detail Description :  
**PARAPET FLASHING DETAIL (SECTION VIEW)**


Scale @ A3 : 1:2

Rev. : NOV 2022

System # :  
**EXP-H-EN01-SF1**

Detail # :  
**11**

ENCLAD™ RAINSCREEN SYSTEMS

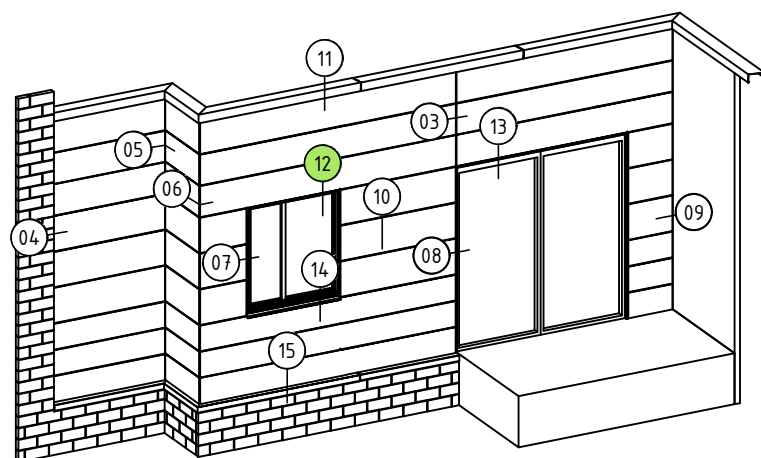
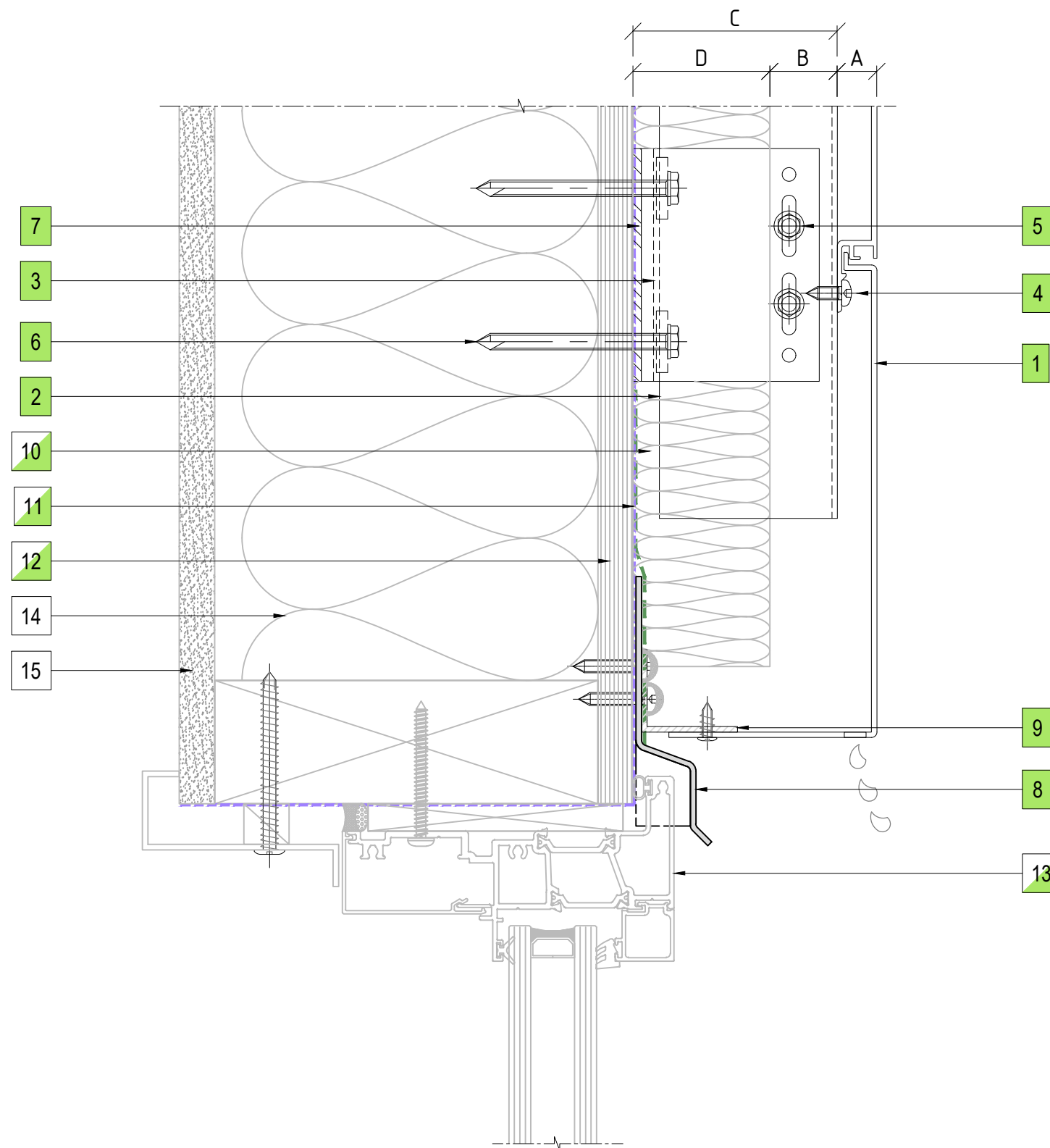


Thermosash

BUILDING ENVELOPE SOLUTIONS™

158 CENTRAL PARK DRIVE,  
HENDERSON,  
AUCKLAND 0610  
NEW ZEALAND

P: +64 9 444 4944  
[www.thermosash.co.nz](http://www.thermosash.co.nz)



12 WINDOW HEAD DETAIL  
ENCLAD™ EXTRUDED ALUMINIUM PLANKS

**COPYRIGHT :** THESE DESIGNS, DETAILS AND/OR SPECIFICATIONS AND THE COPYRIGHT THEREIN, REMAIN THE PROPERTY OF THERMOSASH COMMERCIAL LIMITED.

**DISCLAIMER:** THESE DETAILS ARE PROVIDED FOR INDICATIVE PURPOSES ONLY. CONSTRUCTION/SYSTEM DETAILS CAN VARY DEPENDING ON PROJECT SPECIFIC SPECIFICATION AND ENGINEERING REQUIREMENTS. THE DESIGNER IS RESPONSIBLE FOR ENSURING DETAILS SATISFY ALL NEW ZEALAND BUILDING CODE CLAUSES. THE DESIGNER IS RESPONSIBLE FOR ENSURING BUILDING WRAPS, FIRESTOPS AND INSULATION/SPECIFICATION COMPLY WITH MANUFACTURERS RECOMMENDATIONS AND NZBC REGULATIONS. REFER TO THERMOSHASH WEBSITE FOR FULL TERMS AND CONDITIONS.

### LEGEND

|   |  |
|---|--|
| A | ENCLAD™ EXTRUDED ALUMINIUM PLANKS  |
| B | 20mm - 25mm NOMINAL VENTILATION ZONE (AIR GAP)   |
| C | * 75mm SYSTEM CAVITY TO ACCOMMODATE 50mm THICK INSULATION  |
| D | * 50mm INSULATION (OPTION BY INSITE)<br>FIRE STOP (OPTION BY INSITE)   |
| * | OTHER OPTIONS AVAILABLE (PROJECT SPECIFIC)<br>95mm SYSTEM CAVITY FOR 75mm THICK INSULATION<br>120mm SYSTEM CAVITY FOR 100mm THICK INSULATION |

## PARTS LIST

|    |  |
|----|--|
| 1  | ENCLAD™ EXTRUDED ALUMINIUM PLANKS                      |
| 2  | ENCLAD EN01 ALUMINIUM SUPPORT PROFILE                  |
| 3  | ENCLAD EN01 ALUMINIUM HELPING HAND BRACKET             |
| 4  | ENCLAD PANEL FIXING (STAINLESS STEEL)                  |
| 5  | ENCLAD BRACKET TO RAIL FIXING (STAINLESS STEEL)        |
| 6  | ENCLAD HOST STRUCTURAL FIXING (STAINLESS STEEL)        |
| 7  | ENCLAD THERMAL ISOLATION PAD                           |
| 8  | ENCLAD ALUMINIUM FLASHING                              |
| 9  | ENCLAD ALUMINIUM CLOSURE ANGLE                         |
| 10 | CAVITY INSULATION (OPTION BY INSITE)                   |
| 11 | BUILDING WRAP / MEMBRANE (OPTION BY INSITE)            |
| 12 | RIGID AIR BARRIER / SHEATHING BOARD (OPTION BY INSITE) |
| 13 | ALUMINIUM DOORS, WINDOWS & REVEALS (OPTION BY INSITE)  |
| 14 | WALL INSULATION (BY OTHERS)                            |
| 15 | PLASTER BOARD (BY OTHERS)                              |

Cladding Type :

## ENCLAD™ EXTRUDED ALUMINIUM PLANKS - HORIZONTALLY LAID

Support System :

**ENCLAD™ EN01 - SECRET FIXED**

Detail Description :

WINDOW HEAD DETAIL (SECTION VIEW)

Scale @ A3 : 1:2

|                 |
|-----------------|
| Rev. : NOV 2022 |
|-----------------|

|            |  |
|------------|--|
| System # : |  |
|------------|--|

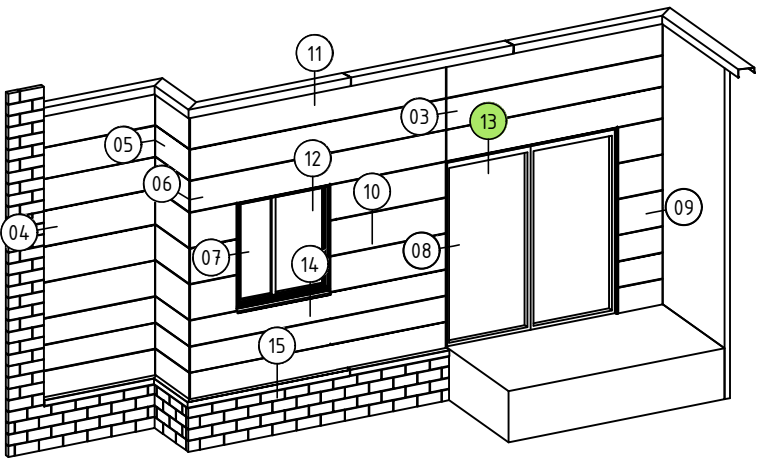
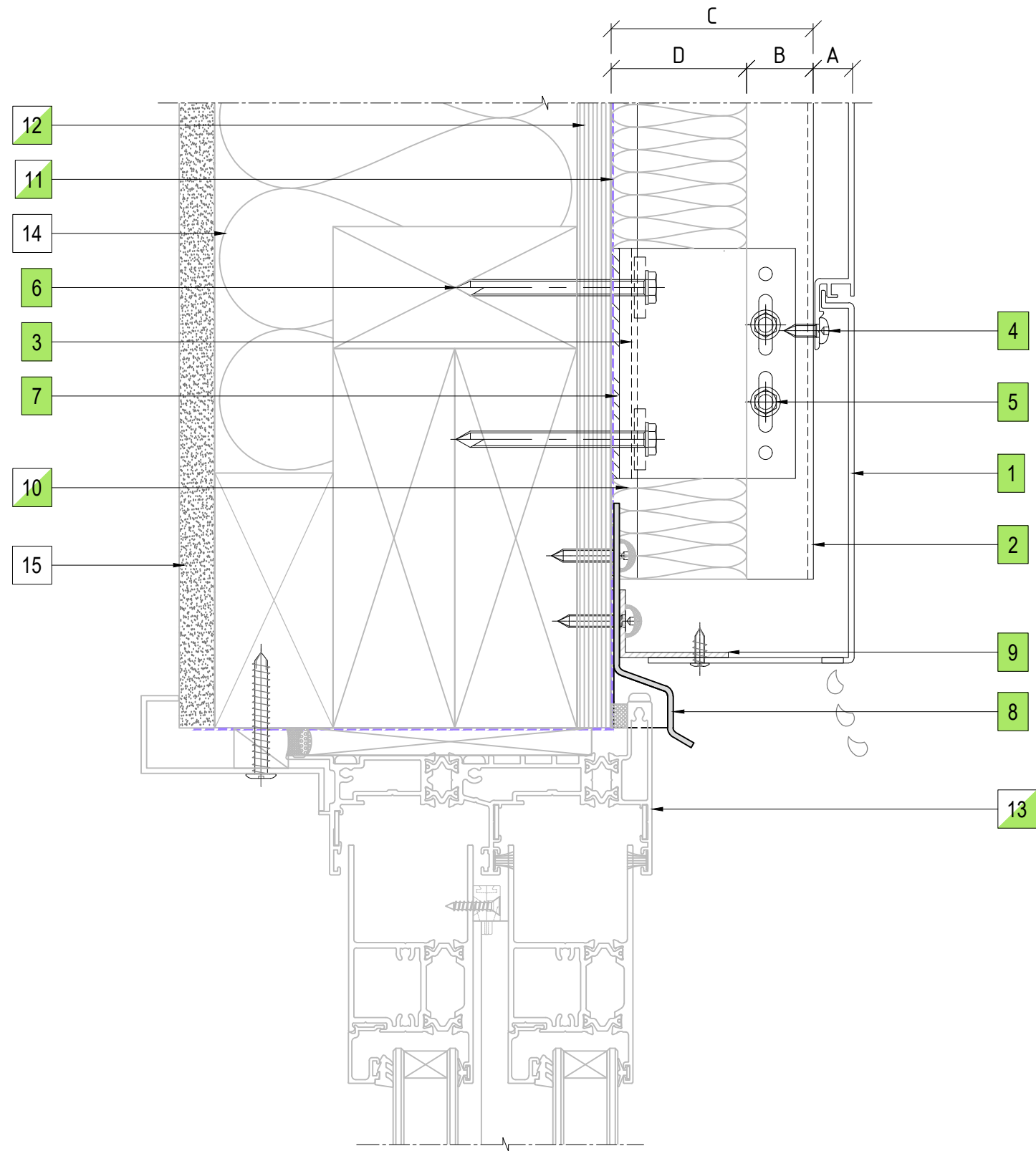
|            |  |
|------------|--|
| Detail # : |  |
|------------|--|

EXP-H-EN01-SF1

12


**ENCLAD™ RAINSCREEN SYSTEMS**






13 DOOR HEAD DEATIL  
ENCLAD™ EXTRUDED ALUMINIUM PLANKS

PART OF THE THERMOSASH GROUP COMPANIES :



Thermosash

BUILDING ENVELOPE SOLUTIONS™



WoodsGlass

BUILDING INNOVATIVE GLAZING SOLUTIONS

**COPYRIGHT :** THESE DESIGNS, DETAILS AND/OR SPECIFICATIONS AND THE COPYRIGHT THEREIN, REMAIN THE PROPERTY OF THERMOSASH COMMERCIAL LIMITED.

**DISCLAIMER :** THESE DETAILS ARE PROVIDED FOR INDICATIVE PURPOSES ONLY. CONSTRUCTION/SYSTEM DETAILS CAN VARY DEPENDING ON PROJECT SPECIFIC SPECIFICATION AND ENGINEERING REQUIREMENTS. THE DESIGNER IS RESPONSIBLE FOR ENSURING DETAILS SATISFY ALL NEW ZEALAND BUILDING CODE CLAUSES. THE DESIGNER IS RESPONSIBLE FOR ENSURING BUILDING WRAPS, FIRESTOPS AND INSULATION/SPECIFICATION COMPLY WITH MANUFACTURERS RECOMMENDATIONS AND NZBC REGULATIONS. REFER TO THERMOSASH WEBSITE FOR FULL TERMS AND CONDITIONS.

LEGEND

|   |  |
|---|--|
| A | ENCLAD™ EXTRUDED ALUMINIUM PLANKS  |
| B | 20mm - 25mm NOMINAL VENTILATION ZONE (AIR GAP)   |
| C | * 75mm SYSTEM CAVITY TO ACCOMMODATE 50mm THICK INSULATION  |
| D | * 50mm INSULATION (OPTION BY INSITE)<br>FIRE STOP (OPTION BY INSITE)   |
| * | OTHER OPTIONS AVAILABLE (PROJECT SPECIFIC)<br>95mm SYSTEM CAVITY FOR 75mm THICK INSULATION<br>120mm SYSTEM CAVITY FOR 100mm THICK INSULATION |

PARTS LIST

|    |  |
|----|--|
| 1  | ENCLAD™ EXTRUDED ALUMINIUM PLANKS                      |
| 2  | ENCLAD EN01 ALUMINIUM SUPPORT PROFILE                  |
| 3  | ENCLAD EN01 ALUMINIUM HELPING HAND BRACKET             |
| 4  | ENCLAD PANEL FIXING (STAINLESS STEEL)                  |
| 5  | ENCLAD BRACKET TO RAIL FIXING (STAINLESS STEEL)        |
| 6  | ENCLAD HOST STRUCTURAL FIXING (STAINLESS STEEL)        |
| 7  | ENCLAD THERMAL ISOLATION PAD                           |
| 8  | ENCLAD ALUMINIUM FLASHING                              |
| 9  | ENCLAD ALUMINIUM CLOSURE ANGLE                         |
| 10 | CAVITY INSULATION (OPTION BY INSITE)                   |
| 11 | BUILDING WRAP / MEMBRANE (OPTION BY INSITE)            |
| 12 | RIGID AIR BARRIER / SHEATHING BOARD (OPTION BY INSITE) |
| 13 | ALUMINIUM DOORS, WINDOWS & REVEALS (OPTION BY INSITE)  |
| 14 | WALL INSULATION (BY OTHERS)                            |
| 15 | PLASTER BOARD (BY OTHERS)                              |
|    |  |
|    |  |
|    |  |
|    |  |
|    |  |
|    |  |
|    |  |
|    |  |
|    |  |

Cladding Type :  
**ENCLAD™ EXTRUDED ALUMINIUM PLANKS - HORIZONTALLY LAID**

Support System :  
**ENCLAD™ EN01 - SECRET FIXED**

Detail Description :  
**DOOR HEAD DETAIL (SECTION VIEW)**


Scale @ A3 : 1:2

Rev. : NOV 2022

System # :  
**EXP-H-EN01-SF1**

Detail # :  
**13**

ENCLAD™ RAINSCREEN SYSTEMS

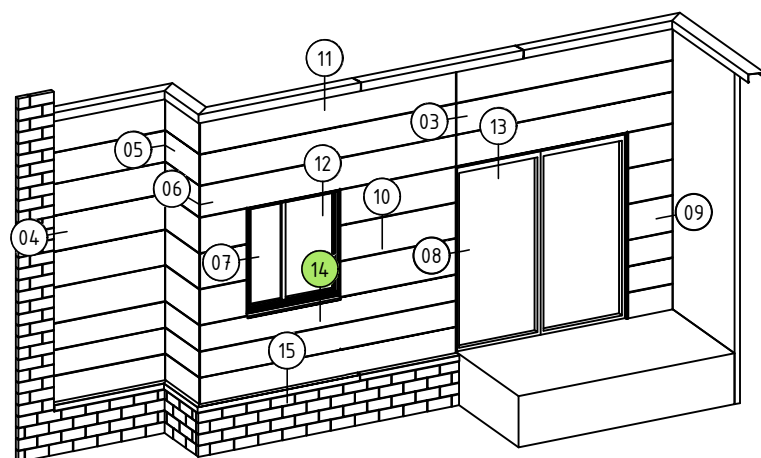
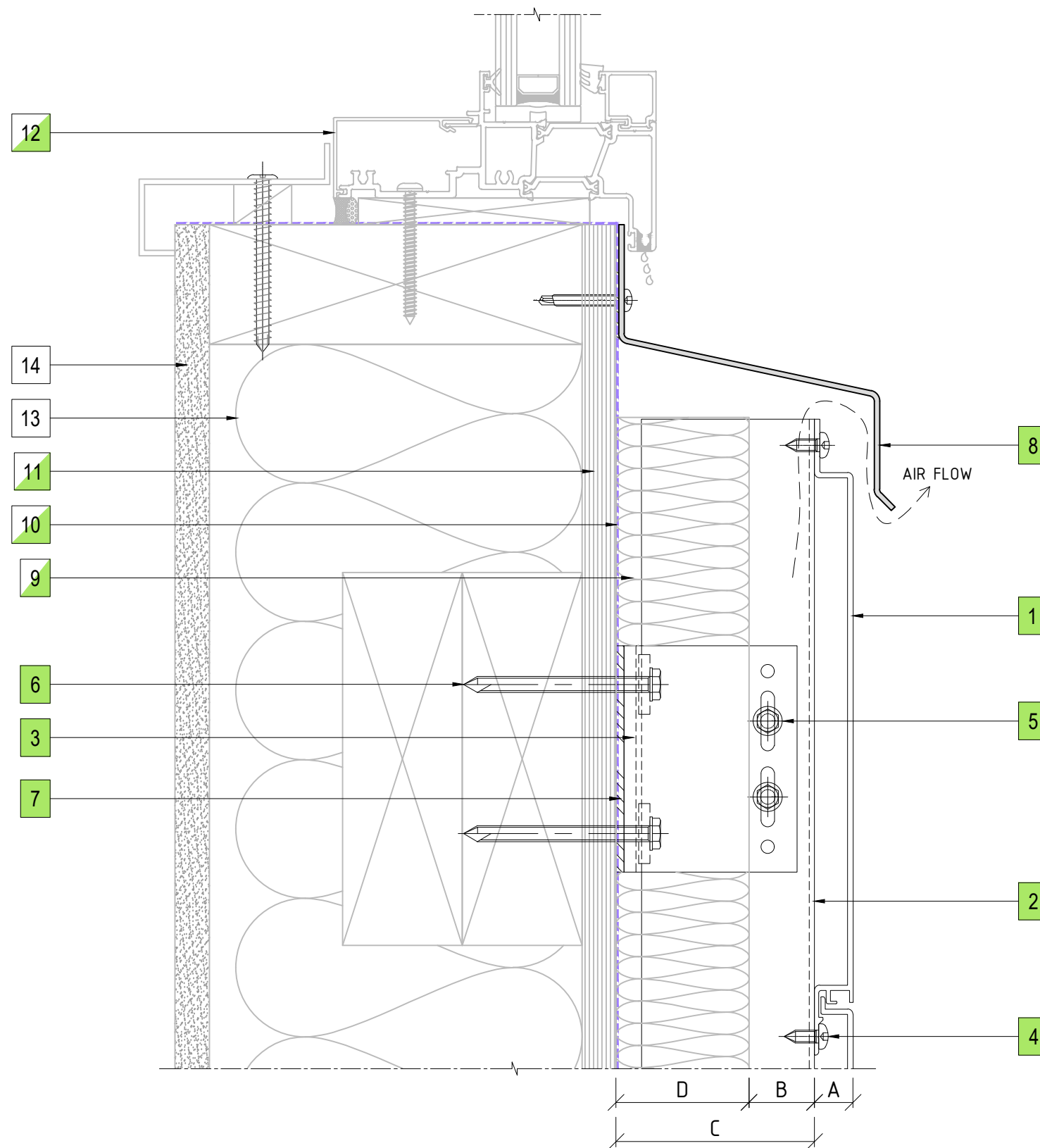


Thermosash

BUILDING ENVELOPE SOLUTIONS™

158 CENTRAL PARK DRIVE,  
HENDERSON,  
AUCKLAND 0610  
NEW ZEALAND

P: +64 9 444 4944  
[www.thermosash.co.nz](http://www.thermosash.co.nz)



14 WINDOW SILL DETAIL  
ENCLAD™ EXTRUDED ALUMINIUM PLANKS

**COPYRIGHT :** THESE DESIGNS, DETAILS AND/OR SPECIFICATIONS AND THE COPYRIGHT THEREIN, REMAIN THE PROPERTY OF THERMOSASH COMMERCIAL LIMITED.

**DISCLAIMER:** THESE DETAILS ARE PROVIDED FOR INDICATIVE PURPOSES ONLY. CONSTRUCTION/SYSTEM DETAILS CAN VARY DEPENDING ON PROJECT SPECIFIC SPECIFICATION AND ENGINEERING REQUIREMENTS. THE DESIGNER IS RESPONSIBLE FOR ENSURING DETAILS SATISFY ALL NEW ZEALAND BUILDING CODE CLAUSES. THE DESIGNER IS RESPONSIBLE FOR ENSURING BUILDING WRAPS, FIRESTOPS AND INSULATION/SPECIFICATION COMPLY WITH MANUFACTURERS RECOMMENDATIONS AND NZBC REGULATIONS. REFER TO THERMOSHASH WEBSITE FOR FULL TERMS AND CONDITIONS.

### LEGEND

|   |  |
|---|--|
| A | ENCLAD™ EXTRUDED ALUMINIUM PLANKS  |
| B | 20mm - 25mm NOMINAL VENTILATION ZONE (AIR GAP)   |
| C | * 75mm SYSTEM CAVITY TO ACCOMMODATE 50mm THICK INSULATION  |
| D | * 50mm INSULATION (OPTION BY INSITE)<br>FIRE STOP (OPTION BY INSITE)   |
| * | OTHER OPTIONS AVAILABLE (PROJECT SPECIFIC)<br>95mm SYSTEM CAVITY FOR 75mm THICK INSULATION<br>120mm SYSTEM CAVITY FOR 100mm THICK INSULATION |

## PARTS LIST

[illegible]

Cladding Type :

## ENCLAD™ EXTRUDED ALUMINIUM PLANKS - HORIZONTALLY LAID

Support System :

**ENCLAD™ EN01 - SECRET FIXED**

Detail Description :

WINDOW SILL DETAIL (SECTION VIEW)

Scale @ A3 : 1:2

Rev. : NOV 2022

System # :

|            |  |
|------------|--|
| Detail # : |  |
|------------|--|

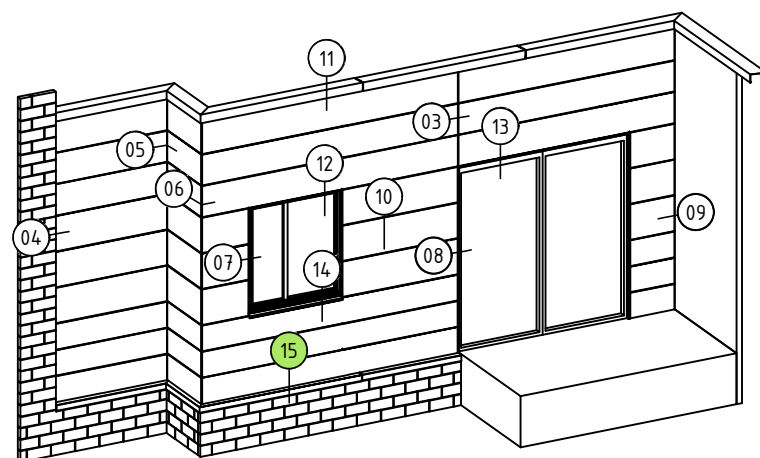
EXP-H-EN01-SF1

14

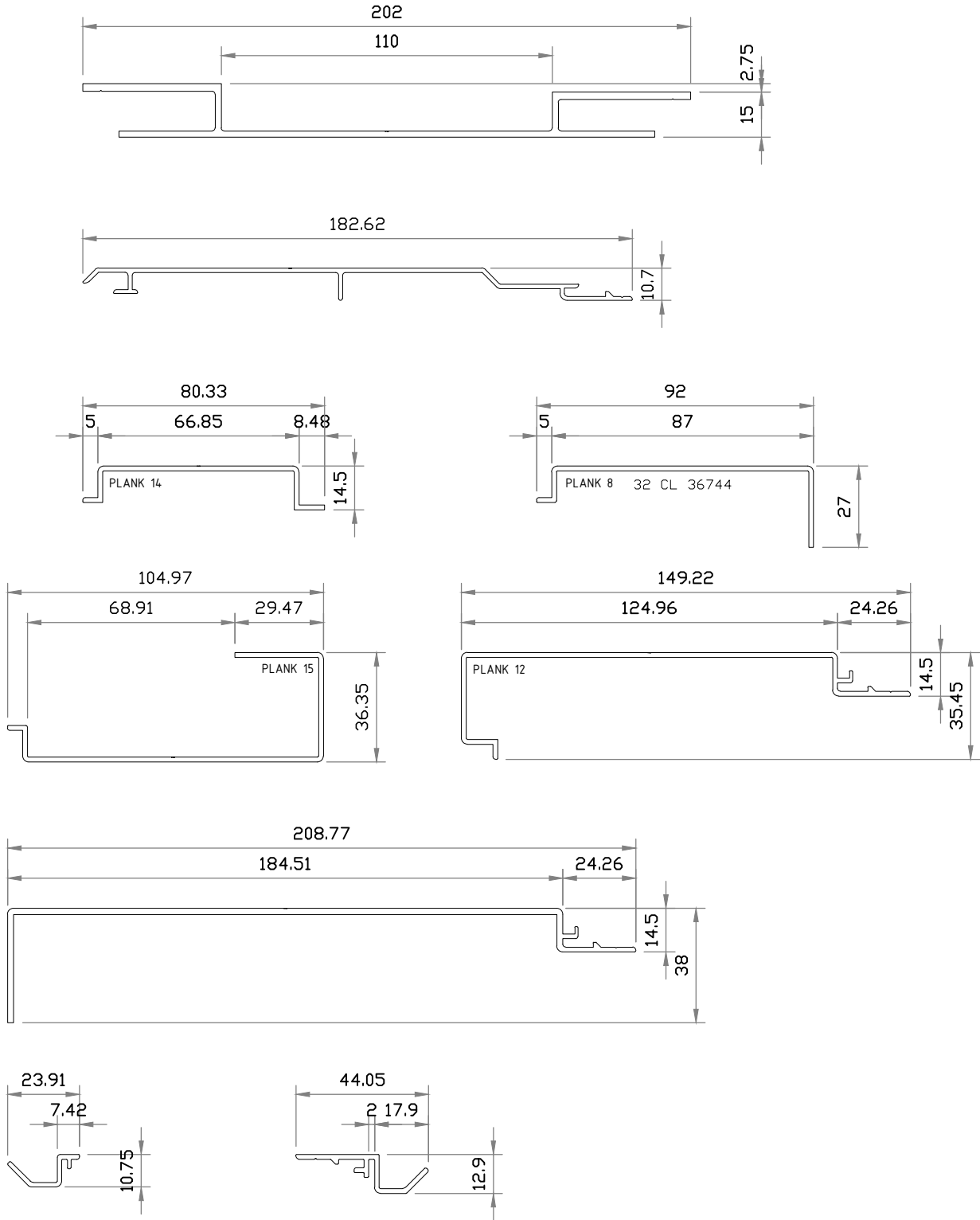
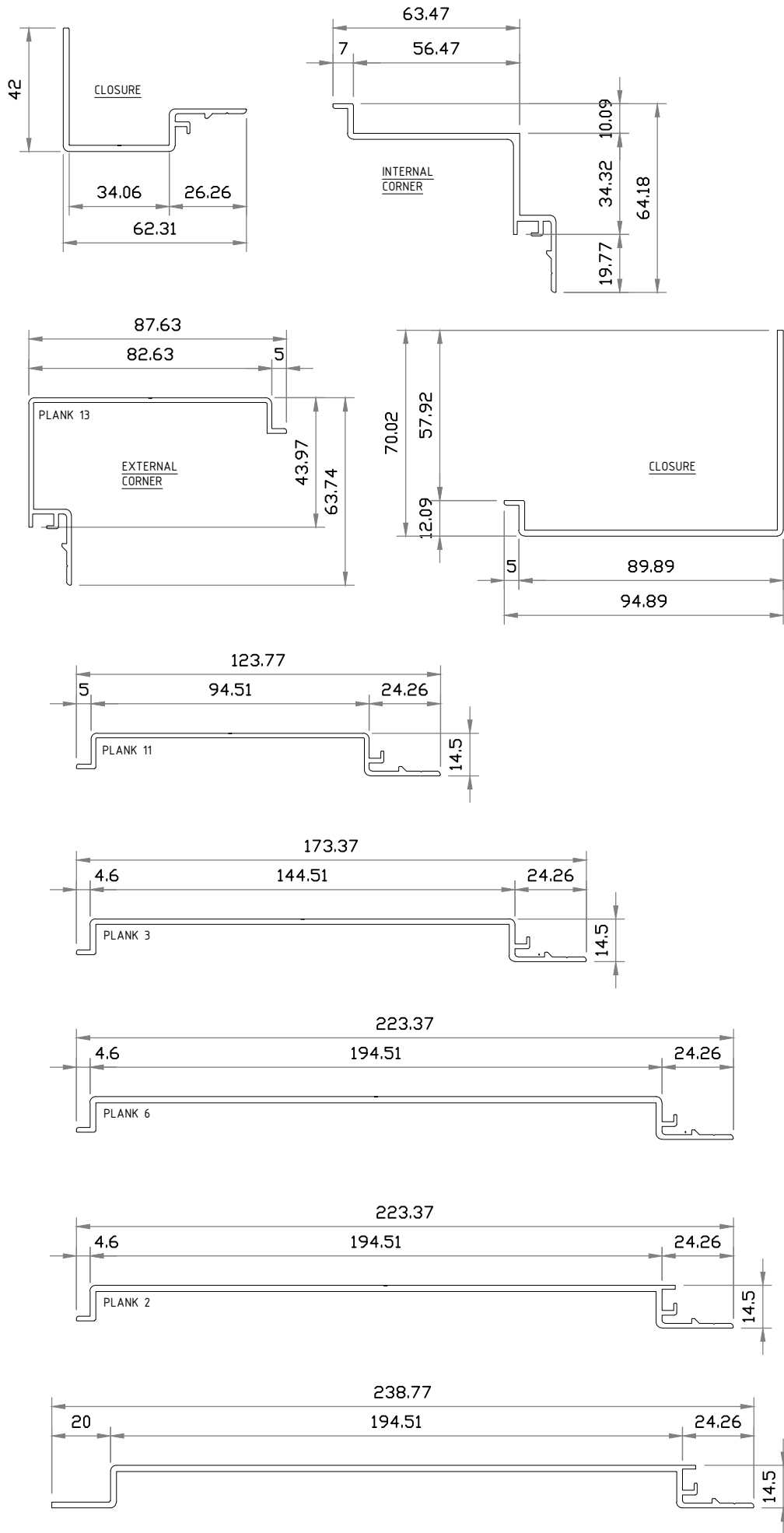
**ENCLAD™ RAINSCREEN SYSTEMS**

158 CENTRAL PARK DRIVE,  
HENDERSON,  
AUCKLAND 0610  
NEW ZEALAND

P: +64 9 444 4944  
[www.thermosash.co.nz](http://www.thermosash.co.nz)



15 BRICKWALL AT BASE DRIP DETAIL  
ENCLAD™ EXTRUDED ALUMINIUM PLANKS



16 PLANK RANGE  
ENCLAD™ EXTRUDED ALUMINIUM PLANKS

PART OF THE THERMOSASH GROUP COMPANIES :

**Thermosash** BUILDING ENVELOPE SOLUTIONS™  
**WoodsGlass** BUILDING INNOVATIVE GLAZING SOLUTIONS

**COPYRIGHT :** THESE DESIGNS, DETAILS AND/OR SPECIFICATIONS AND THE COPYRIGHT THEREIN, REMAIN THE PROPERTY OF THERMOSASH COMMERCIAL LIMITED.

**DISCLAIMER :** THESE DETAILS ARE PROVIDED FOR INDICATIVE PURPOSES ONLY. CONSTRUCTION/SYSTEM DETAILS CAN VARY DEPENDING ON PROJECT SPECIFIC SPECIFICATION AND ENGINEERING REQUIREMENTS. THE DESIGNER IS RESPONSIBLE FOR ENSURING DETAILS SATISFY ALL NEW ZEALAND BUILDING CODE CLAUSES. THE DESIGNER IS RESPONSIBLE FOR ENSURING BUILDING WRAPS, FIRESTOPS AND INSULATION/SPECIFICATION COMPLY WITH MANUFACTURERS RECOMMENDATIONS AND NZBC REGULATIONS. REFER TO THERMOSASH WEBSITE FOR FULL TERMS AND CONDITIONS.

Cladding Type :  
**ENCLAD™ EXTRUDED ALUMINIUM PLANKS - HORIZONTALLY LAID**

Support System :  
**ENCLAD™ EN01 - SECRET FIXED**

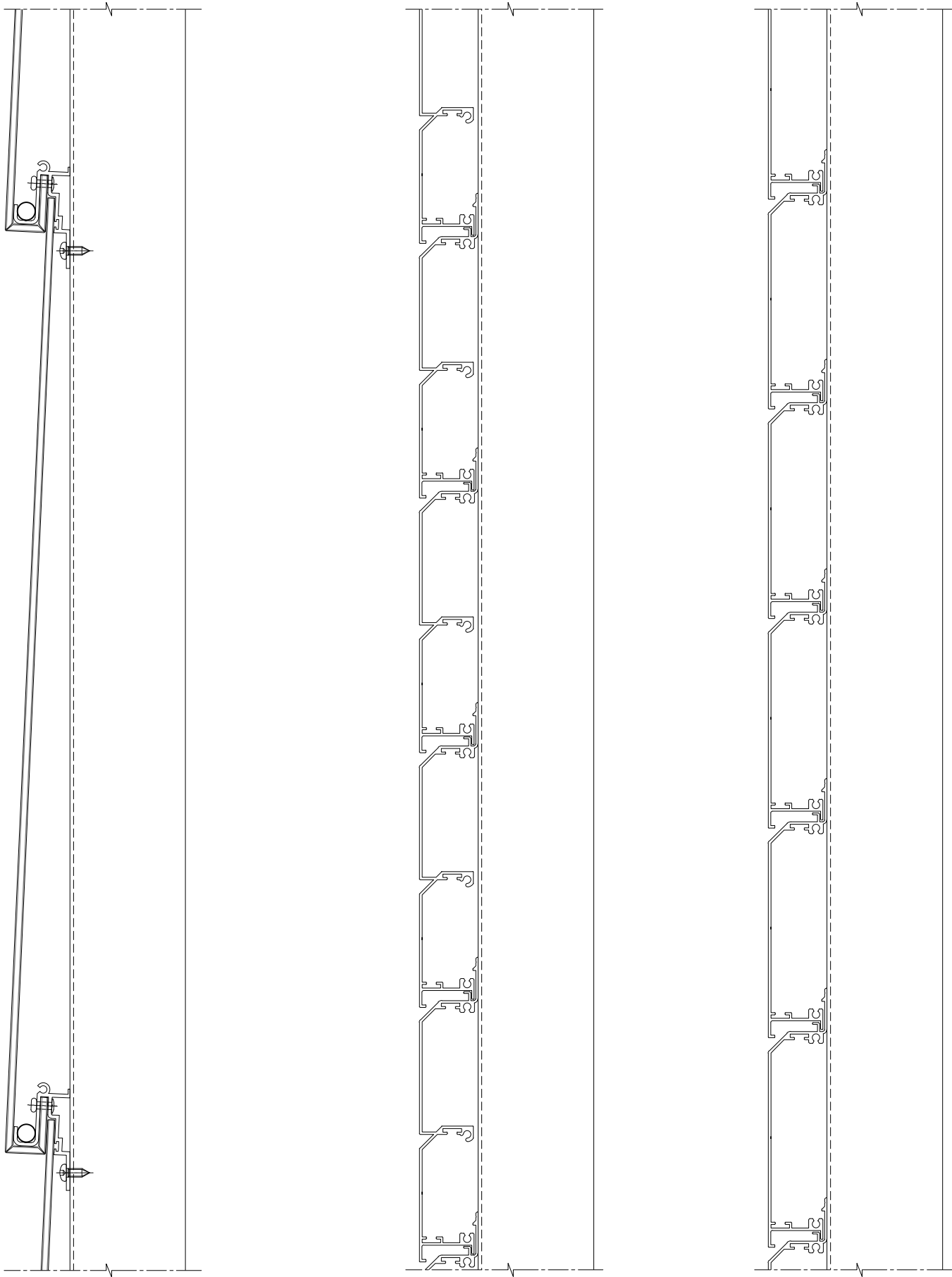
Detail Description :  
**PLANK RANGE**

|                              |                  |
|------------------------------|------------------|
| Scale @ A3 : 1:2             | Rev. : NOV 2022  |
| System # :<br>EXP-H-EN01-SF1 | Detail # :<br>16 |

**ENCLAD™ RAINSCREEN SYSTEMS**

**Thermosash** BUILDING ENVELOPE SOLUTIONS™

158 CENTRAL PARK DRIVE,  
HENDERSON,  
AUCKLAND 0610  
NEW ZEALAND  
P: +64 9 444 4944  
[www.thermosash.co.nz](http://www.thermosash.co.nz)



17 PLANK SETOUT  
ENCLAD<sup>TM</sup> EXTRUDED ALUMINIUM PLANKS

PART OF THE THERMOSASH GROUP COMPANIES :

**COPYRIGHT :** THESE DESIGNS, DETAILS AND/OR SPECIFICATIONS AND THE COPYRIGHT THEREIN, REMAIN THE PROPERTY OF THERMOSASH COMMERCIAL LIMITED.

**DISCLAIMER :** THESE DETAILS ARE PROVIDED FOR INDICATIVE PURPOSES ONLY. CONSTRUCTION/SYSTEM DETAILS CAN VARY DEPENDING ON PROJECT SPECIFIC SPECIFICATION AND ENGINEERING REQUIREMENTS. THE DESIGNER IS RESPONSIBLE FOR ENSURING DETAILS SATISFY ALL NEW ZEALAND BUILDING CODE CLAUSES. THE DESIGNER IS RESPONSIBLE FOR ENSURING BUILDING WRAPS, FIRESTOPS AND INSULATION/SPECIFICATION COMPLY WITH MANUFACTURERS RECOMMENDATIONS AND NZBC REGULATIONS. REFER TO THERMOSASH WEBSITE FOR FULL TERMS AND CONDITIONS.

Cladding Type :  
**ENCLAD<sup>TM</sup> EXTRUDED ALUMINIUM PLANKS - HORIZONTALLY LAID**

Support System :  
**ENCLAD<sup>TM</sup> EN01 - SECRET FIXED**

Detail Description :  
**PLANK SETOUT**

|                              |                  |
|------------------------------|------------------|
| Scale @ A3 : 1:3             | Rev. : DEC 2022  |
| System # :<br>EXP-H-EN01-SF1 | Detail # :<br>17 |



