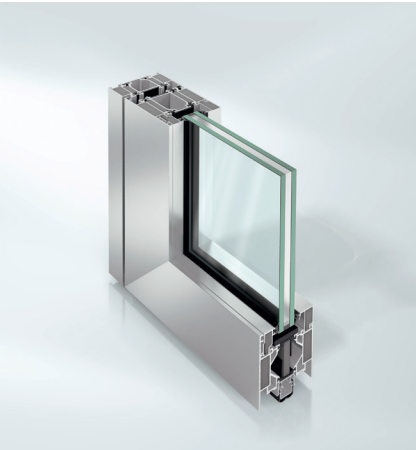


Schüco ADS 80 FR 60

Aluminium fire door system



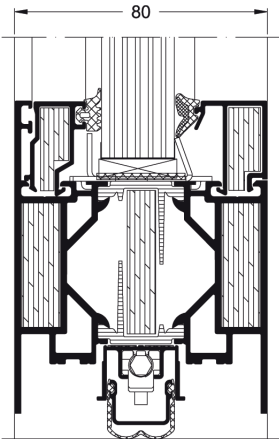
Schüco ADS 80 FR 60



Schüco glazed fire door ADS 80 FR 60



Schüco panel fire door ADS 80 FR 60



Vertical section detail
Schüco Door ADS 80 FR 60
door sill rail, scale 1:2

The Schüco Fire Door ADS 80 FR 60 achieves fire resistance class classifications EI60 (T60, F60) providing up to 60 minutes retardant and smoke protection by the insertion of fire boards and the use of fire-resistance glass.

This series is based on a stable 5-chamber hollow profile with basic profile depth of 80mm. The system provides burglar resistance against basic tools to RC2 (WK2) with optional additional panic function and sound reduction to 42dB. Further design options include top door closers or pre-selectors.

Product benefits
Schüco ADS 80 FR 60 <ul style="list-style-type: none"> Clear opening dimensions: Single-leaf 1400 x 2488 mm Double-leaf 2820 x 2488 mm Generous dimensions up to 4000 mm high, unlimited length Glass sizes up to 1400 x 2500 mm - maximum glass thickness 44mm Use of panel versions up to 1400 x 2500 mm - maximum panel thickness 44mm Multi-purpose: fire and smoke protection, burglar resistance, sound reduction, access control and panic functions System profiles and system fittings predominantly identical to those for Schüco Door ADS 80 FR 30 All the necessary system fittings including fire-resistant glass are supplied T60/F60 approval granted in Germany, country-specific approvals are available
Fabrication benefits
<ul style="list-style-type: none"> Locking cams pre-assembled at the factory allow uniform and flexible installation of all fittings components in the multi-purpose groove Fast and cost-effective fixing of the units to the building structure Use of a latch-and-bolt lock approved for clear opening dimension up to max. 2488 mm

Technical data		
Test	Standard	Value
Thermal insulation	DIN EN 1077-2	Value in W/(m²K) maximally 1.9
Burglar resistance	DIN V ENV 1627	up to RC2 (WK2)
Air permeability	DIN EN 12207	Class 4
Fire protection	DIN 4102 / EN 1634/EN 1364	F60, T60, EI60
Durability resistance	EN 12400	Class 8
Mechanical loading	DIN EN 13115	to Class 4

Schüco ADS 80 FR 60



As a leader in innovation for system-based construction, Schüco aluminium door systems combine the highest standards in terms of energy safety, security and design with market-specific requirements.

Schüco International KG

www.schueco.com

www.schueco.de

Folgen Sie uns:
Follow us:



Schüco – System solutions for windows, doors and façades

Based in Bielefeld, the Schüco Group develops and sells system solutions for windows, doors and façades. With 6330 employees worldwide, the company strives to be the industry leader in terms of technology and service both now and in the future. In addition to innovative products for residential and commercial buildings, the building envelope specialist offers consultation and digital solutions for all phases of a building project – from the initial idea through to design, fabrication and installation. Schüco works with 10,000 fabricators and 30,000 architectural practices, as well as construction professionals who commission buildings around the world. Founded in 1951, the company is now active in more than 80 countries and achieved a turnover of 1.995 billion euros in 2021. For more information, visit www.schueco.com

The "Schüco" logo and other logos are protected in Germany and various international markets. We will provide detailed information upon request.

Thermosash 
BUILDING ENVELOPE SOLUTIONS™

SCHÜCO



NZ01, 2025/Printed in New Zealand
We reserve the right to make technical changes and to correct errors. Products may differ from illustrations.

PRODUCTS

CANOPIES
SHOPFRONT
RAINScreens
BALUSTRADES
THERMAL BREAK
DOORS & SLIDERS
CHANNEL GLAZING
MECHANICAL LOUVRES
ROOFLIGHTS & ATRIUMS
COMMERCIAL WINDOWS
SOLARSHADING, LOUVRES & FINS
TOTAL VISION - STRUCTURAL GLAZING
UNITISED CURTAINWALL & PANELWALL FAÇADES
SCHÜCO - HIGH END RESIDENTIAL WINDOWS & DOORS

Auckland

158-164 Central Park Drive,
Henderson, Auckland 0610
PO Box 100-340, North Shore,
Auckland 0745, New Zealand
P: +64 9 444 4944
F: +64 9 444 4886

Wellington

17-19 Marine Parade, Petone,
Lower Hutt 5012, New Zealand
PO Box 38-645, Wellington Mail
Centre, Lower Hutt 5045, New Zealand
P: +64 4 939 4500
F: +64 4 939 4499

Christchurch

12 Braeburn Drive
Hornby, Christchurch 8040
PO Box 313, Christchurch 8140,
New Zealand
P: +64 4 348 4004
F: +64 4 348 4088

www.thermosash.co.nz

www.thermosash-schueco.co.nz