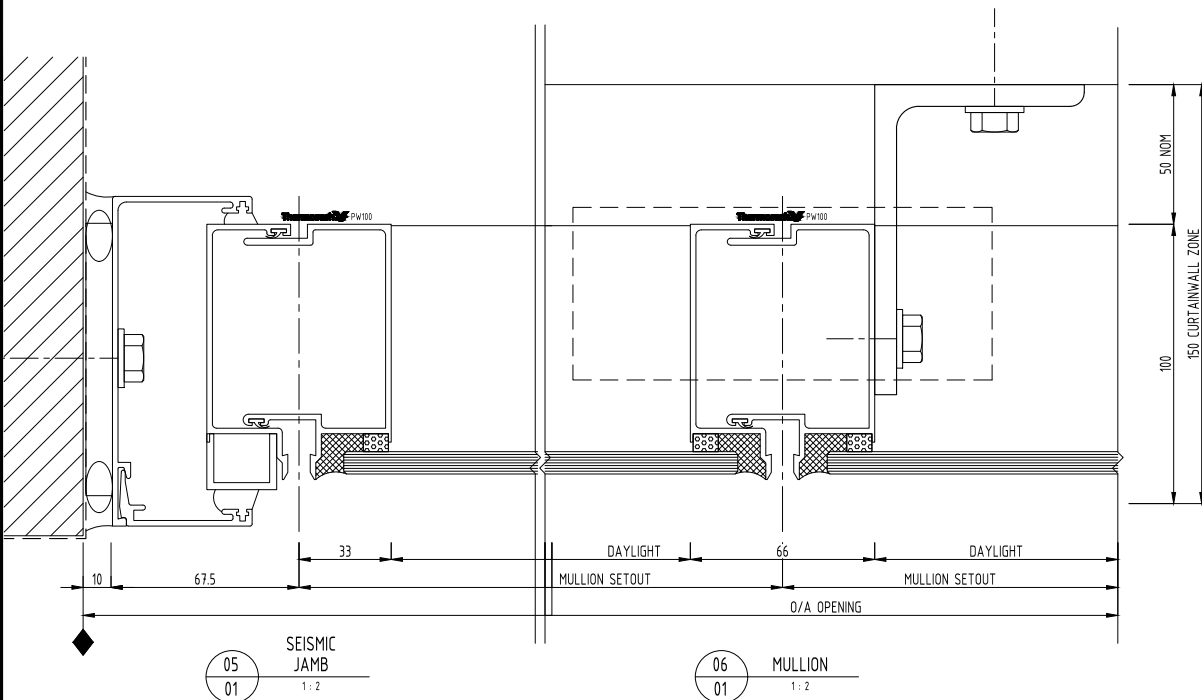
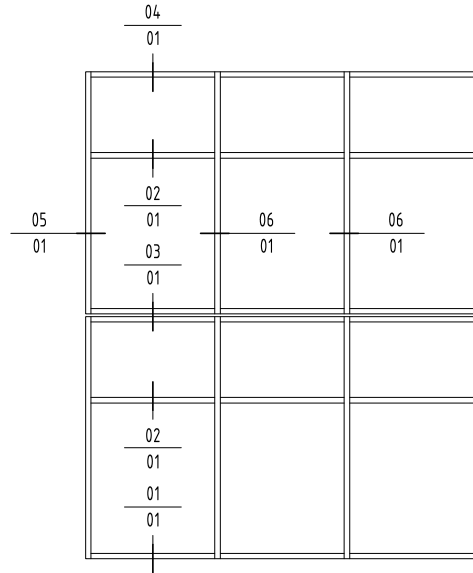


NOTES:

- 1) DRAWING TO BE USED IN CONJUNCTION WITH 'MASTERSPEC' (4211)
- 2) WINDOW SYSTEMS REQUIRE SPECIFIC DESIGN DEPENDING ON SPANS, WIND-LOADS, BUILDING CONDITIONS, ETC.
- 3) INSIDE GLAZE, INTERNAL REINFORCEMENT AND SEISMIC FRAME OPTIONS AVAILABLE

GLAZING: GLASS THICKNESS TO SUIT REQUIREMENTS  
 HARDWARE: STANDARD HARDWARE OPTIONS  
 FINISHES: POWDER-COAT / ANODISED / PVF<sup>2</sup>

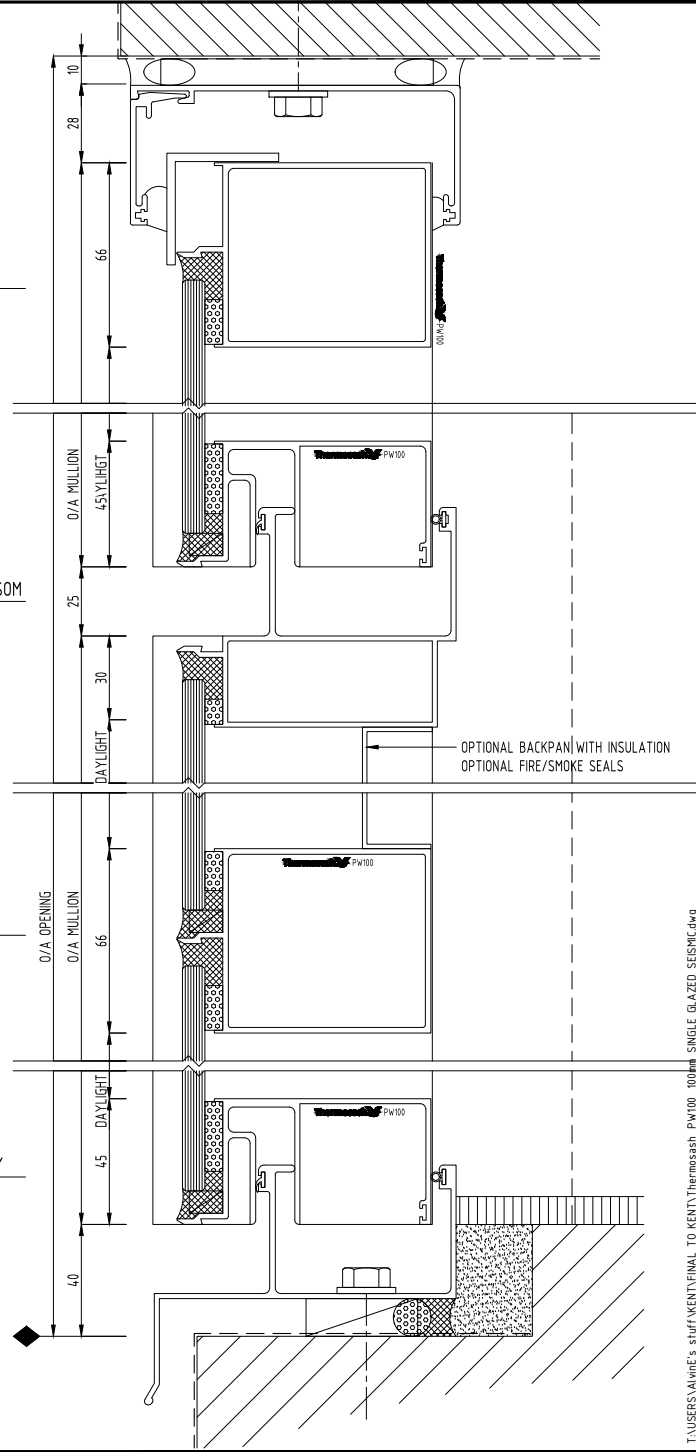


04  
01 SEISMIC HEAD  
1:2

03  
01 SPLIT TRANSOM  
1:2

02  
01 TRANSOM  
1:2

01  
01 SILL TRAY  
1:2



T:\USERS\A\ine's\_stuff\MENTIONAL TO KENT\Thermosash\_PW100\_100mm\_SINGLE\_GLAZED\_SEISMIC.dwg

|                               |               |
|-------------------------------|---------------|
| SYSTEM :                      | TYPE :        |
| PW100                         | 100mm MULLION |
| UNITISED LOWRISE PANEL SYSTEM | SINGLE GLAZED |

|          |        |
|----------|--------|
| SCALE:   | DATE:  |
| 1:2 @ A3 | Dec-12 |
| PAGE:    |        |
| PW100-01 |        |

www.thermosash.co.nz - AUCKLAND: (09)444-4944 - WELLINGTON: (04)939-4500 - CHRISTCHURCH: (03)348-4004

