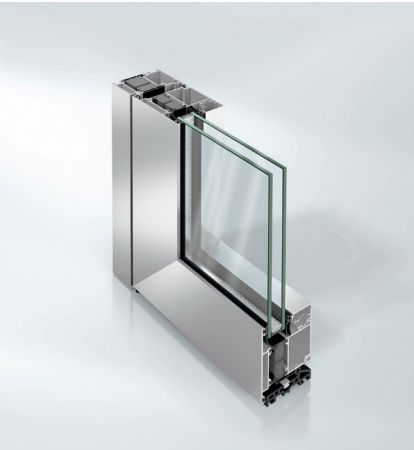


Schüco ADS 75 HD.HI

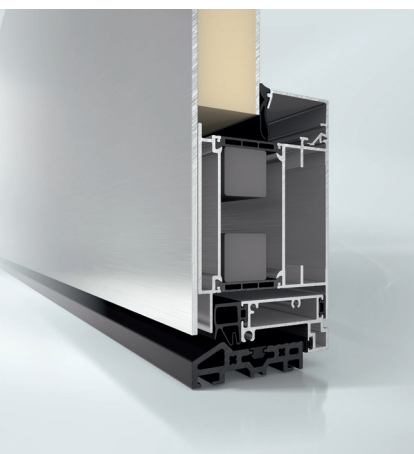
Aluminium Door System



Schüco ADS 75 HD.HI



Schüco door ADS 75 HD.HI

Schüco door ADS 75 HD.HI
one-sided leaf-covering

Busy buildings require particularly robust door systems. Their value is enhanced by the specially reinforced construction and the large opening width of the Schüco ADS 75 HD.HI (Heavy Duty, High Insulation) door. Not only is it a striking feature of the facade, it is also suitable for use in almost every type of project with a basic depth of 75mm and clearance heights of up to 3000mm. The degree of creative freedom is particularly high. Suitable for use with all Schüco facade and window systems, the benefits of the classic and timeless design are self-evident.

Product benefits

Schüco ADS 75 HD.HI

- Burglar resistant up to RC3 (WK3)
- Opening width up to 2800mm (double-leaf)
- Generous clearance heights of up to 3000mm
- Max. leaf weight 200kg
- Barrel hinge with reinforced design
- Choice of sill rail profile or continuous leaf profile

Fabrication benefits

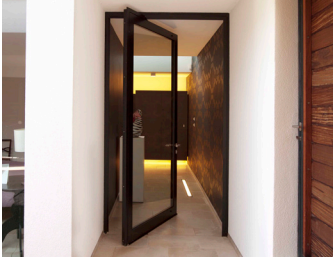
- Automatic door seal
- Easy-access solutions
- Concealed hinges
- Leaf-enclosing infill
- Door hinges tested in 1,000 000 cycles for continuous loading in accordance with DIN EN 12400
- Emergency fittings
- Emergency exit switch
- Double-leaf full panic door in RC2(WK2) with Schüco InterLock automatic locking

Technical data

Test	Standard	Value
Thermal insulation	DIN EN 1077-2	U _f Value in W/(m ² K) maximally 2.0
Burglar resistance	DIN V ENV 1627	RC3 (WK3)
Air permeability	DIN EN 12207	Class 2
Watertightness	DIN EN 12208	to Class 5A
Wind resistance	DIN EN 112210 ¹	to Class C3
Mechanical loading	DIN EN 13115	to Class 3

¹The amount of deflection will depend on the profile

Schüco ADS 75 HD.HI



As a leader in innovation for system-based construction, Schüco aluminium door systems combine the highest standards in terms of energy safety, security and design with market-specific requirements.

Schüco International KG

www.schueco.com

www.schueco.de

Folgen Sie uns:
Follow us:



Schüco – System solutions for windows, doors and façades

Based in Bielefeld, the Schüco Group develops and sells system solutions for windows, doors and façades. With 6330 employees worldwide, the company strives to be the industry leader in terms of technology and service both now and in the future. In addition to innovative products for residential and commercial buildings, the building envelope specialist offers consultation and digital solutions for all phases of a building project – from the initial idea through to design, fabrication and installation. Schüco works with 10,000 fabricators and 30,000 architectural practices, as well as construction professionals who commission buildings around the world. Founded in 1951, the company is now active in more than 80 countries and achieved a turnover of 1.995 billion euros in 2021. For more information, visit www.schueco.com

Thermosash 
BUILDING ENVELOPE SOLUTIONS™

SCHÜCO



Overview

	Schüco ADS 112 IC	Schüco ADS 90.SI	Schüco ADS 90.PL.SI	Schüco ADS 75.SI	Schüco ADS 75.HD.HI	Schüco ADS 65	Schüco ADS 65.HD	Schüco ADS 65.NI	Schüco ADS 60
Energy									
Thermally insulated					■	■	■		■
High Thermally insulated	■	■	■	■	■				
U _f -values in W/(m ² K) from ¹	1.0	1.4	1.6	2.0	1.3	2.2	2.9	-	2.6
Automatic door seal		■	■	■	■	■	■	■	■
Design									
Basic depth in mm	112	90	90	75	75	65	65	65	60
Leaf Sizes									
Width in mm	1400	1400	1400	1250	1250	1250	1400	1250	1100
Height in mm	2500	2500	2500	2500	3000	2500	3000	2500	2500
Leaf weight in kg									
Barrel hinge	160	160	160	150	200	150	200	150	120
Surface-mounted door hinge	160	160	160	150	200	150	200	150	150
Design types									
RL (Residential Line)			■	■	■	■	■	■	■
SL (Soft Line)	■	■	■	■	■	■	■	■	■
Continuous leaf/sill		C/L	C/L	C/L	C/L	C/L	C/L	C/L	C
Opening types									
Inward opening	■	■	■	■	■	■	■	■	■
Outward opening			■	■	■	■	■	■	■
Flush-fitted			■	■	■	■	■	■	■
Face-fitted			■	■	■	■	■	■	■
Hinges									
Concealed hinge 100° /80°	■	■	■	■	■	■	■	■	■
Barrel Hinge	■	■	■	■	■	■	■	■	■
Surface-mounted door hinge	■	■	■	■	■	■	■	■	■

¹ Face widths 147mm

Overview

	Schüco ADS 112 IC	Schüco ADS 90.SI	Schüco ADS 90.PL.SI	Schüco ADS 75.SI	Schüco ADS 75.HD.HI	Schüco ADS 65	Schüco ADS 65.HD	Schüco ADS 65.NI	Schüco ADS 60
Rolling options									
Pre-rolled	■	■	■	■	■	■	■	■	■ ²
Rolled together by customer	■	■	■	■	■	■	■	■	■
Pre-rolled by Schüco	■	■	■	■	■		■		
Leaf-enclosing infill	■	■	■	■	■	■	■	■	■
Dual colour	■	■	■	■	■	■	■	■	■
Security									
Burglar Resistance									
WK2 (RC2)	■	■	■	■	■	■	■	■	■
Wk3 (RC3)		■	■	■	■	■	■	■	
Emergency exit switch		■	■	■	■	■	■	■	
Panic fitting DIN EN 1125/179		■		■	■	■	■	■	■
Hinges protected against vandalism		■	■	■	■	■	■	■	
Automation									
Integration with building management system		■		■	■	■	■	■	
Door manager		■		■	■	■	■	■	
Monitoring /sensors	■	■		■	■	■	■	■	■
Access control									
Card reader		■	■	■	■	■	■	■	
Fingerprint		■	■	■	■	■	■	■	
Radio control		■	■	■	■	■	■	■	■
Keypad		■	■	■	■	■	■	■	
Easy access									
Easy access threshold	■	■	■	■	■	■	■	■	■
Top door closer	■	■	■	■	■	■	■	■	■
Keyless entry	■	■	■	■	■	■	■	■	■
Side-hung door motor	■	■	■	■	■	■	■	■	■

² Selected profiles



Thermosash

BUILDING ENVELOPE SOLUTIONS™

SCHÜCO

PARTNER

PRODUCTS

CANOPIES
SHOPFRONT
RAINSCREENS
BALUSTRADES
THERMAL BREAK
DOORS & SLIDERS
CHANNEL GLAZING
MECHANICAL LOUVRES
ROOFLIGHTS & ATRIUMS
COMMERCIAL WINDOWS
SOLARSHADING, LOUVRES & FINS
TOTAL VISION - STRUCTURAL GLAZING
UNITISED CURTAINWALL & PANELWALL FAÇADES
SCHÜCO - HIGH END RESIDENTIAL WINDOWS & DOORS

Auckland

158-164 Central Park Drive,
Henderson, Auckland 0610
PO Box 100-340, North Shore,
Auckland 0745, New Zealand
P: +64 9 444 4944
F: +64 9 444 4886

Wellington

17-19 Marine Parade, Petone,
Lower Hutt 5012, New Zealand
PO Box 38-645, Wellington Mail
Centre, Lower Hutt 5045, New Zealand
P: +64 4 939 4500
F: +64 4 939 4499

Christchurch

12 Braeburn Drive
Hornby, Christchurch 8040
PO Box 313, Christchurch 8140,
New Zealand
P: +64 4 348 4004
F: +64 4 348 4088

www.thermosash.co.nz