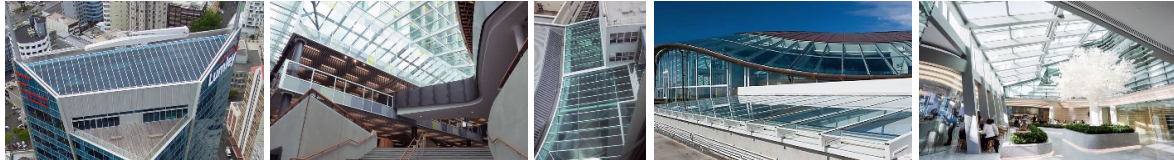


Thermosash Alpha Glazing System

Rooflights & Atriums



Product Description

Thermosash Alpha Glazing System - capped, skylight & atrium glazing bar systems. This design style of overhead glazing employs an aluminum extrusion that encapsulates a minimum of two edges that are then connected back to the primary structure. The Thermosash Alpha Glazing Suite can be used externally for canopies or internally for skylights as well as an economical solution for factories, warehouses, hangers and grandstands, yet is a sophisticated and rated high performance solution for all high end skylight and sloped glazing applications. Due to potential exposure to high wind, seismic, snow, and live loads etc, it is necessary for these types of systems to be specifically designed. Innovation and providing custom specific design solutions has always been the foundation on which Thermosash has developed its suites.

Overhead glazing configurations include:

- Lean-to skylights
- Ridge skylights
- Double pitch skylights
- Pyramid skylights
- Multi-faceted pyramids
- Hip ridge skylights
- Segmented barrel vault skylights
- Curved barrel vault skylights
- Vertical glazing
- Section Sizes

The suite is adaptable to fit a range of 55-80mm.

Maximum Spanning Ability

Glass size and primary structure support is your only limitation. We can source your specific glass requirements to meet your projects needs.

Thermosash specifically engineers the best suite option for your project taking into consideration span, structural system, load imposed by glass thickness, wind & snow loading. The spanning ability will vary depending on the above.

Thermosash Suites are recognized as having the largest spanning systems on the market due to our specific engineering capability and the customised nature of the work we complete.

Auckland (H/O)

41 Poland Road, Wairau Valley,
Auckland 0627, New Zealand
PO Box 100-340, North Shore,
Auckland 0745, New Zealand
P: +64 9 444 4944
F: +64 9 444 4886

Wellington

17-19 Marine Parade, Petone,
Lower Hutt 5012, New Zealand
PO Box 38-645, Wellington Mail
Centre, Lower Hutt 5045, New Zealand
P: +64 4 939 4500
F: +64 4 939 4499

Christchurch

12 Braeburn Drive,
Hornby, Christchurch 8042
PO Box 313, Christchurch 8140,
New Zealand
P: +64 3 348 4004
F: +64 3 348 4088

Warranty

The standard warranty is 5 years from the date of practical completion for these products. This covers workmanship and weather tightness, providing the subcontract includes fabrication, installation and glazing of all components.

Key Features

- Alpha glazing suite integrates with the [Thermosash Delta Suite](#).
- Can be installed to a minimum slope of 5°
- Integral drainage cavities.
- Commercial glazing engagements to cope with higher wind loads.
- Condensation control (where specified).
- Thermal break.
- Ability to provide a different colour from inside to outside.
- Ability to provide a different colour from inside to outside.
- Can accommodate all recognized glass thicknesses used in commercial glazing.
- Special splicing and connection features critical for weathering.
- Almost any type of glass can be incorporated including ceramic fritting to provide an element of solar shading corporate motif.
- The Alpha range can incorporate opening sashes or banks of louvres - BMS operated if required.
- The Alpha systems are dry glazed unless aesthetically otherwise required.
- Bars are designed to accommodate co-extruded backing gaskets to minimise long term shrinkage problems.
- Glass is retained with gaskets fitted inside and out, primarily as a weather seal, but also to cushion against vibration and potential glass breakage.

Specification

We recommend using [Masterspec 4251T Commercial Windows](#) when specifying this suite type.

Finishes

- Polyester powdercoat - both standard and special colours available
- Anodised - all anodised colours available - commercial grade 20 Micron finish recommended
- PVF2 Fluorocarbon finishes - available on request