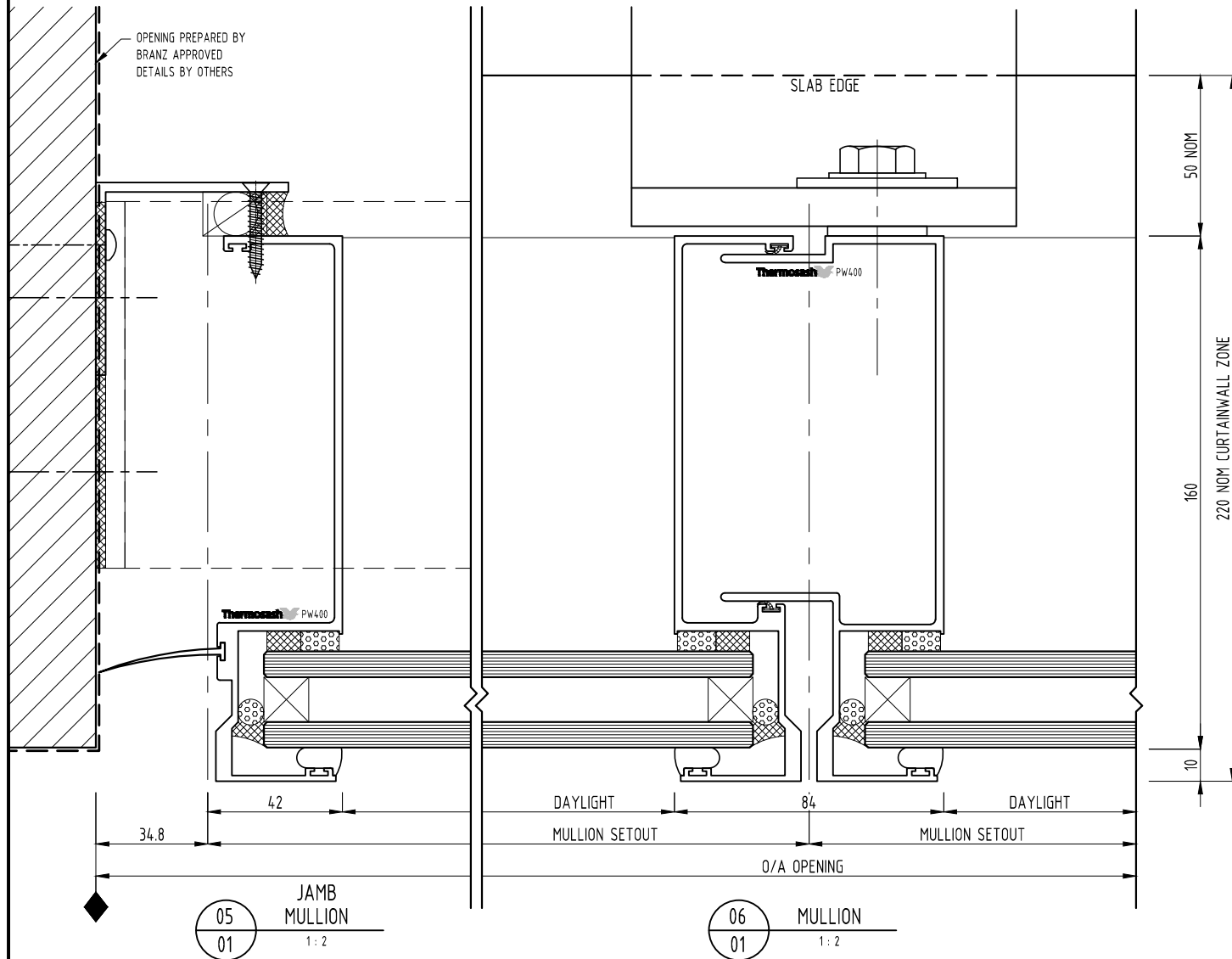
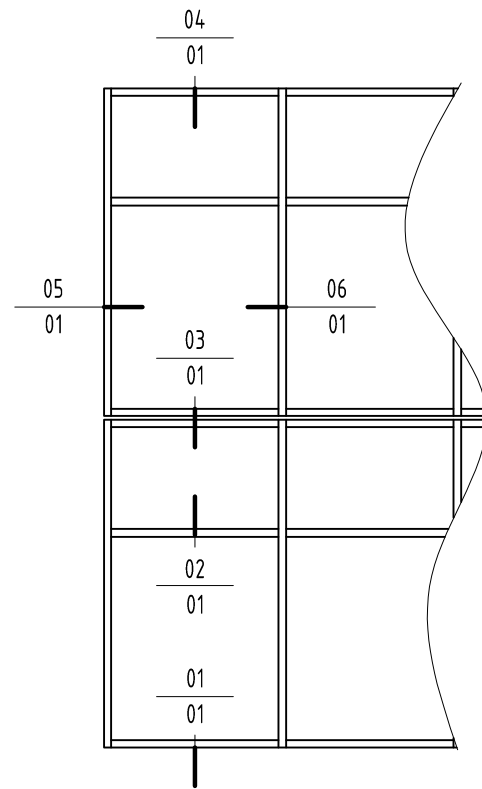


NOTES:
 1) DRAWING TO BE USED IN CONJUNCTION WITH 'MASTERSPEC' (4211)
 2) WINDOW SYSTEMS REQUIRE SPECIFIC DESIGN DEPENDING ON SPANS, WIND-LOADS, BUILDING CONDITIONS, ETC.
 3) INSIDE GLAZE, INTERNAL REINFORCEMENT AND SEISMIC FRAME OPTIONS AVAILABLE

GLAZING: GLASS THICKNESS TO SUIT REQUIREMENTS
 HARDWARE: STANDARD HARDWARE OPTIONS
 FINISHES: POWDER-COAT / ANODISED / PVF²



04
01

PARAPET CAPPING
1:2

03
01

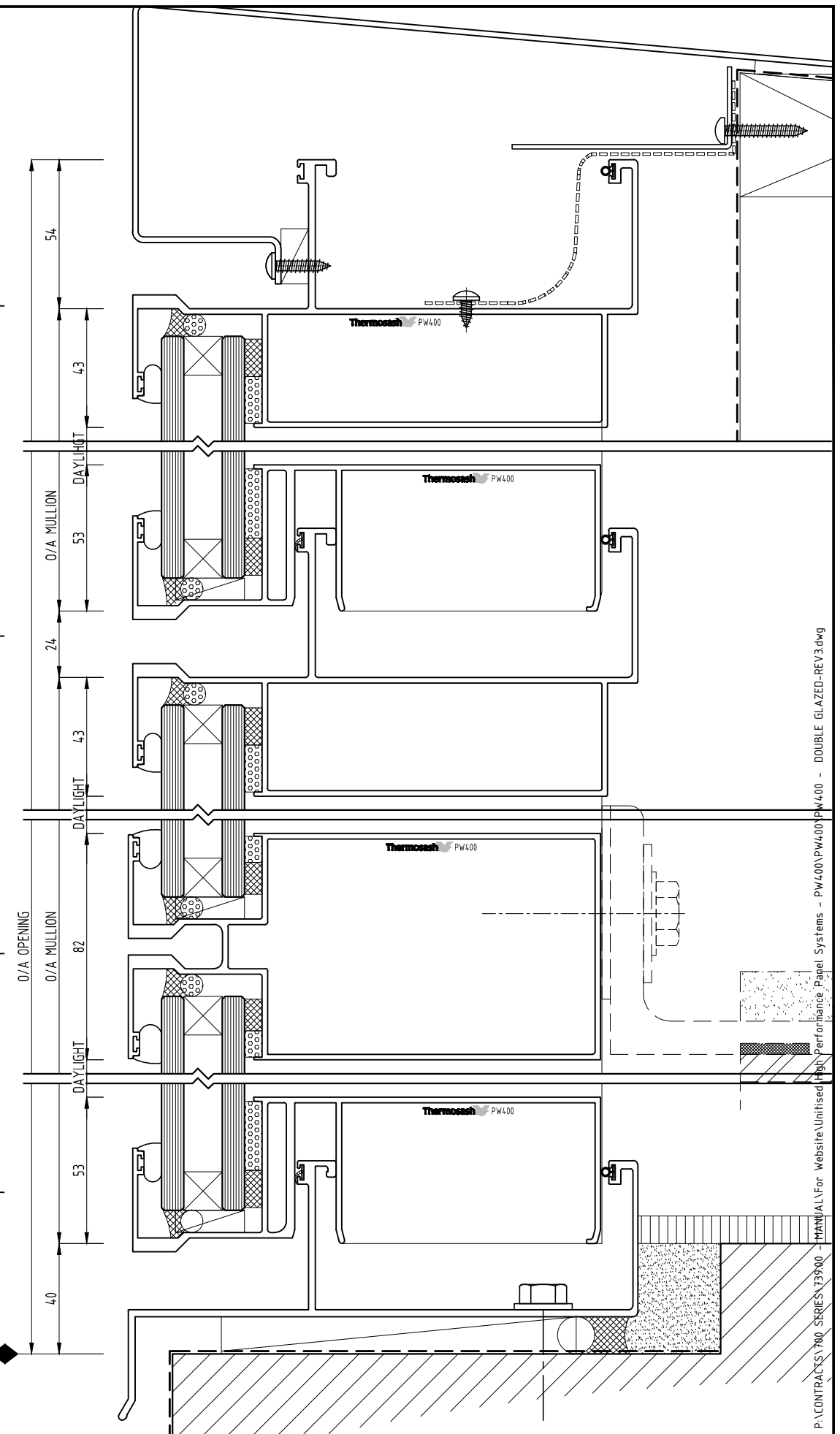
SPLIT TRANSOM
1:2

02
01

TRANSOM
1:2

01
01

SILL TRAY
1:2



SYSTEM :
 PW400
 UNITISED HIGH PERFORMANCE PANEL
 SYSTEMS

TYPE :
 150 MULLION
 DOUBLE GLAZED

www.thermosash.co.nz ~ AUCKLAND: (09)444-4944 ~ WELLINGTON: (04)939-4500 ~ CHRISTCHURCH: (03)348-4004

SCALE:
 1:2 @ A3

DATE:
 15-01-2018

PAGE:
 PW400-01

Thermosash
 BUILDING ENVELOPE SOLUTIONS™

P:\CONTRACTS\700 SERIES\73900 - MANUAL\For Website\Unitted High Performance Panel Systems - PW400\PW400PW400 - DOUBLE GLAZED-REV3.dwg