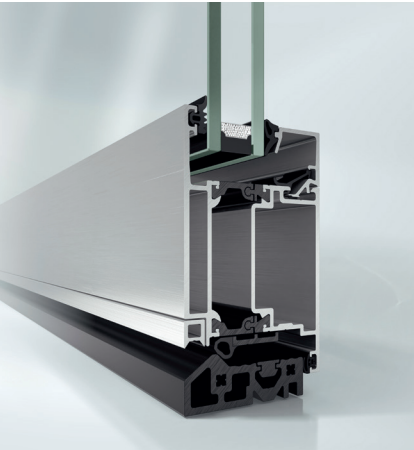


Schüco ADS 60

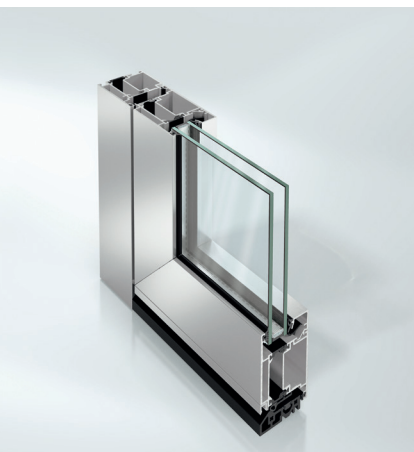
Aluminium door system



Schüco ADS 60



Schüco door ADS 60 sandwich



Schüco door ADS 60 corner

The Schüco Door ADS 60 is the economical solution for entrances where the focus is not on thermal insulation; for example, in warmer climates, for interior use or in public buildings. The different options for integration in the building security and building management system mean that the doors are versatile and can be used economically. They coordinate ideally with the Schüco AWS 60 window system, which can then be integrated seamlessly in the facade.

Product benefits

Schüco ADS 60

- Minimal basic depth
- Continuous Leaf profile
- 147mm face width
- Barrel hinge, infinitely adjustable in three dimensions
- Almost flush-fitted rosette
- Burglar resistance up to RC2 (WK2)

Fabrication benefits

- Can be integrated in Schüco Facade Systems
- Use with systems in Schüco AWS series
- Use of identical components for different basic depth to reduce the number of components and to simplify logistics and storage
- Range of fittings tailored to the individual series
- Adjustable sill

Technical data

Test	Standard	Value
Thermal insulation	DIN EN 1077-2	Value in W/(m ² K) maximally 2.6
Burglar resistance	DIN V ENV 1627	RC2 (WK2)
Air permeability	DIN EN 12207	Class 2
Watertightness	DIN EN 12208	to Class 5A
Wind resistance	DIN EN 112210 ¹	to Class 3
Mechanical loading	DIN EN 13115	to Class 3

¹The amount of deflection will depend on the profile

Schüco ADS 60



As a leader in innovation for system-based construction, Schüco aluminium door systems combine the highest standards in terms of energy safety, security and design with market-specific requirements.

Schüco International KG

www.schueco.com

www.schueco.de

Folgen Sie uns:
Follow us:



Schüco – System solutions for windows, doors and façades

Based in Bielefeld, the Schüco Group develops and sells system solutions for windows, doors and façades. With 6330 employees worldwide, the company strives to be the industry leader in terms of technology and service both now and in the future. In addition to innovative products for residential and commercial buildings, the building envelope specialist offers consultation and digital solutions for all phases of a building project – from the initial idea through to design, fabrication and installation. Schüco works with 10,000 fabricators and 30,000 architectural practices, as well as construction professionals who commission buildings around the world. Founded in 1951, the company is now active in more than 80 countries and achieved a turnover of 1.995 billion euros in 2021. For more information, visit www.schueco.com

Thermosash 
BUILDING ENVELOPE SOLUTIONS™

SCHÜCO

The "Schüco" logo and other logos are protected in Germany and various international markets. We will provide detailed information upon request.



NZ04_2023/Printed in New Zealand
We reserve the right to make technical changes and to correct errors. Products may differ from illustrations.

Overview

	Schüco ADS 112 IC	Schüco ADS 90.SI	Schüco ADS 90.PL.SI	Schüco ADS 75.SI	Schüco ADS 75.HD.HI	Schüco ADS 65	Schüco ADS 65.HD	Schüco ADS 65.NI	Schüco ADS 60
Energy									
Thermally insulated					■	■	■		■
High Thermally insulated	■	■	■	■	■				
U _f -values in W/(m ² K) from ¹	1.0	1.4	1.6	2.0	1.3	2.2	2.9	-	2.6
Automatic door seal		■	■	■	■	■	■	■	■
Design									
Basic depth in mm	112	90	90	75	75	65	65	65	60
Leaf Sizes									
Width in mm	1400	1400	1400	1250	1250	1250	1400	1250	1100
Height in mm	2500	2500	2500	2500	3000	2500	3000	2500	2500
Leaf weight in kg									
Barrel hinge	160	160	160	150	200	150	200	150	120
Surface-mounted door hinge	160	160	160	150	200	150	200	150	150
Design types									
RL (Residential Line)			■	■	■	■	■	■	■
SL (Soft Line)	■	■	■	■	■	■	■	■	■
Continuous leaf/sill		C/L	C/L	C/L	C/L	C/L	C/L	C/L	C
Opening types									
Inward opening	■	■	■	■	■	■	■	■	■
Outward opening			■	■	■	■	■	■	■
Flush-fitted			■	■	■	■	■	■	■
Face-fitted			■	■	■	■	■	■	■
Hinges									
Concealed hinge 100° /80°	■	■	■	■	■	■	■	■	■
Barrel Hinge	■	■	■	■	■	■	■	■	■
Surface-mounted door hinge	■	■	■	■	■	■	■	■	■

¹ Face widths 147mm

Overview

	Schüco ADS 112 IC	Schüco ADS 90.SI	Schüco ADS 90.PL.SI	Schüco ADS 75.SI	Schüco ADS 75.HD.HI	Schüco ADS 65	Schüco ADS 65.HD	Schüco ADS 65.NI	Schüco ADS 60
Rolling options									
Pre-rolled	■	■	■	■	■	■	■	■	■ ²
Rolled together by customer	■	■	■	■	■	■	■	■	■
Pre-rolled by Schüco	■	■	■	■	■		■		
Leaf-enclosing infill	■	■	■	■	■	■	■	■	■
Dual colour	■	■	■	■	■	■	■	■	■
Security									
Burglar Resistance									
WK2 (RC2)	■	■	■	■	■	■	■	■	■
Wk3 (RC3)		■	■	■	■	■	■	■	
Emergency exit switch		■	■	■	■	■	■	■	
Panic fitting DIN EN 1125/179		■		■	■	■	■	■	■
Hinges protected against vandalism		■	■	■	■	■	■	■	
Automation									
Integration with building management system		■		■	■	■	■	■	
Door manager		■		■	■	■	■	■	
Monitoring /sensors	■	■		■	■	■	■	■	■
Access control									
Card reader		■	■	■	■	■	■	■	
Fingerprint		■	■	■	■	■	■	■	
Radio control		■	■	■	■	■	■	■	■
Keypad		■	■	■	■	■	■	■	
Easy access									
Easy access threshold	■	■	■	■	■	■	■	■	■
Top door closer	■	■	■	■	■	■	■	■	■
Keyless entry	■	■	■	■	■	■	■	■	■
Side-hung door motor	■	■	■	■	■	■	■	■	■

² Selected profiles



Thermosash

BUILDING ENVELOPE SOLUTIONS™

SCHÜCO

PARTNER

PRODUCTS

CANOPIES
SHOPFRONT
RAINSCREENS
BALUSTRADES
THERMAL BREAK
DOORS & SLIDERS
CHANNEL GLAZING
MECHANICAL LOUVRES
ROOFLIGHTS & ATRIUMS
COMMERCIAL WINDOWS
SOLARSHADING, LOUVRES & FINS
TOTAL VISION - STRUCTURAL GLAZING
UNITISED CURTAINWALL & PANELWALL FAÇADES
SCHÜCO - HIGH END RESIDENTIAL WINDOWS & DOORS

Auckland

158-164 Central Park Drive,
Henderson, Auckland 0610
PO Box 100-340, North Shore,
Auckland 0745, New Zealand
P: +64 9 444 4944
F: +64 9 444 4886

Wellington

17-19 Marine Parade, Petone,
Lower Hutt 5012, New Zealand
PO Box 38-645, Wellington Mail
Centre, Lower Hutt 5045, New Zealand
P: +64 4 939 4500
F: +64 4 939 4499

Christchurch

12 Braeburn Drive
Hornby, Christchurch 8040
PO Box 313, Christchurch 8140,
New Zealand
P: +64 4 348 4004
F: +64 4 348 4088

www.thermosash.co.nz