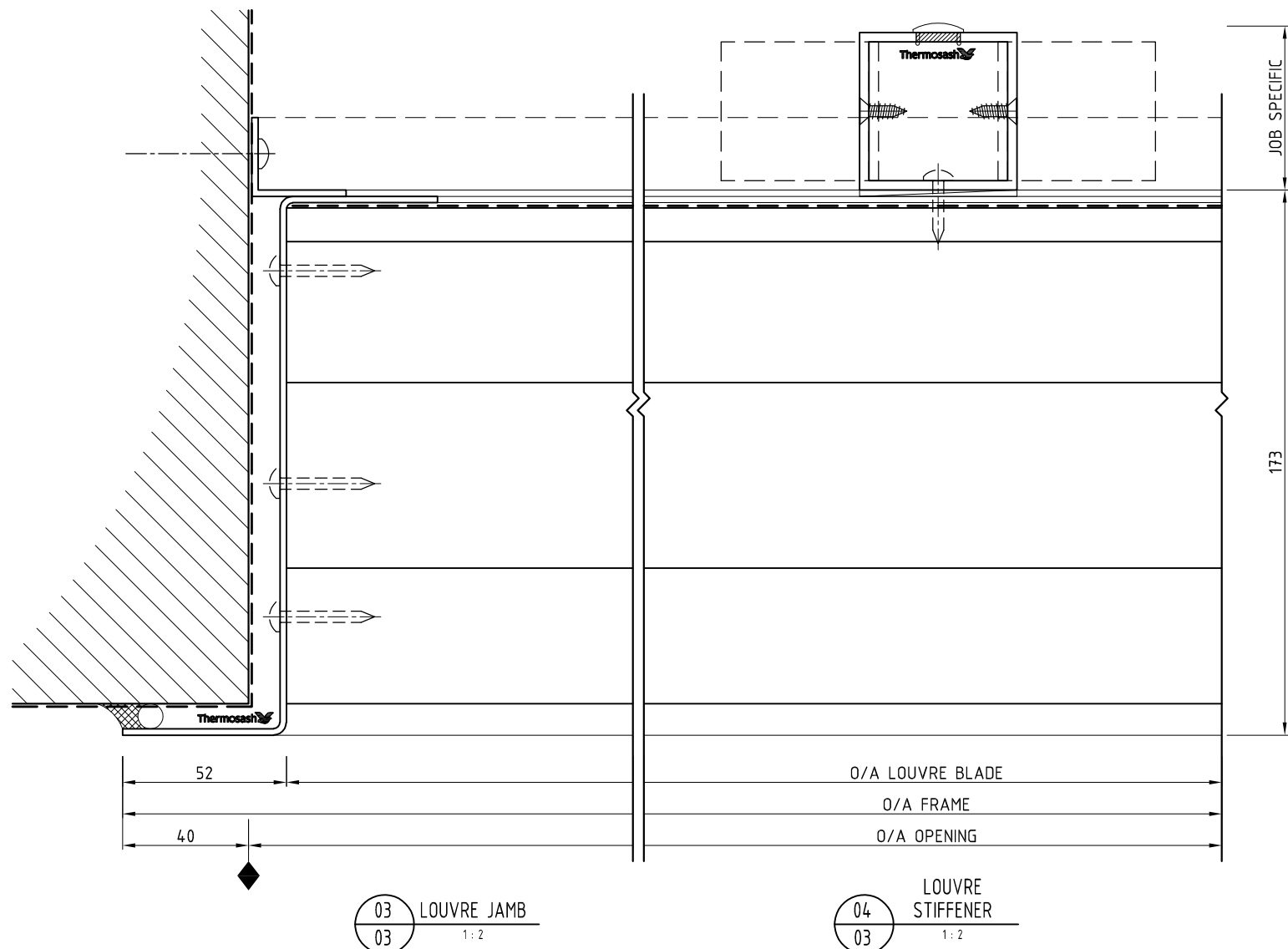


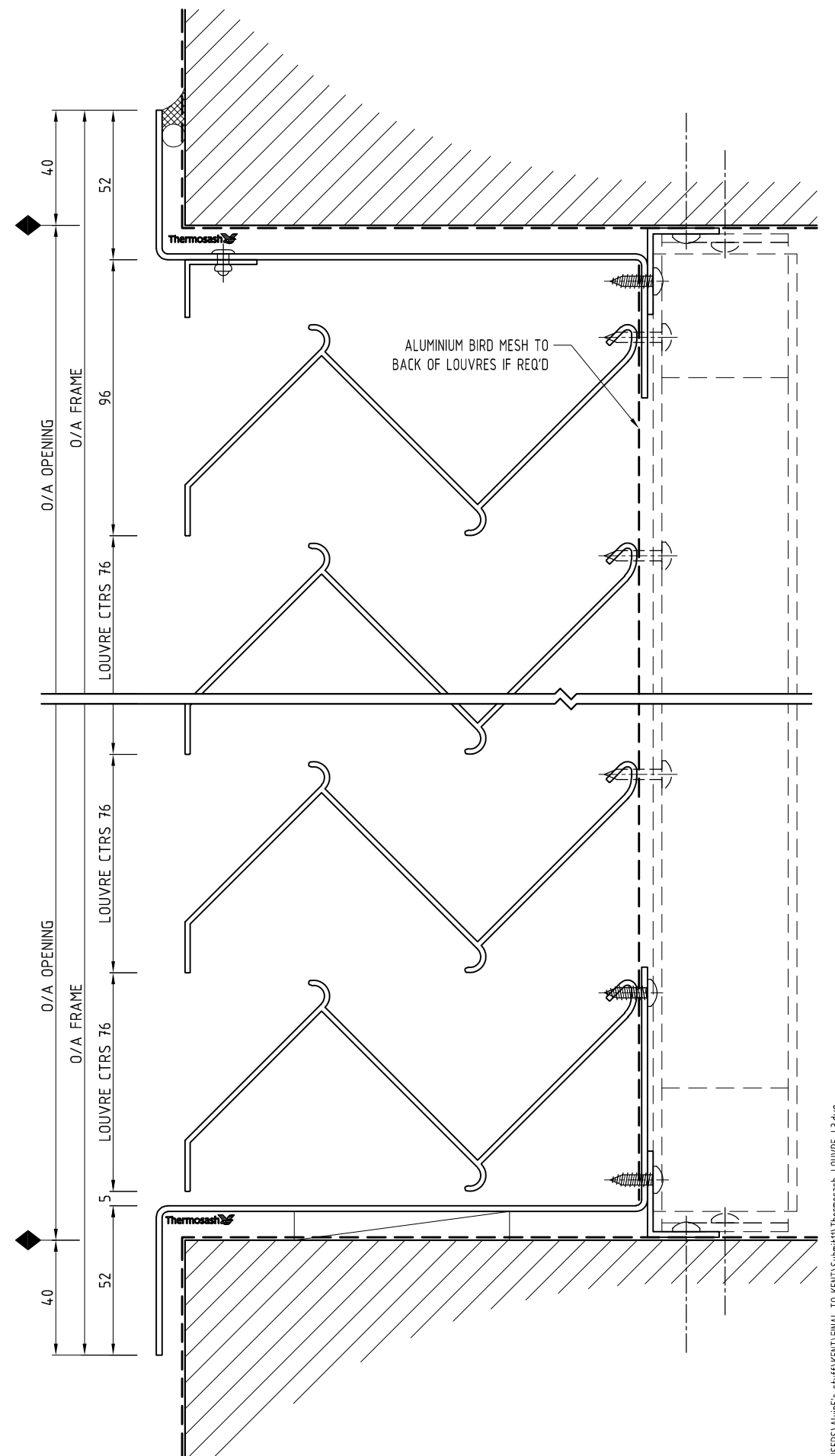
NOTES:
 1) DRAWING TO BE USED IN CONJUNCTION WITH 'MASTERSPEC' (4521)
 2) WINDOW SYSTEMS REQUIRE SPECIFIC DESIGN DEPENDING ON SPANS, WIND-LOADS, CLADDING SPECIFIED, ETC.
 3) INTERNAL REINFORCEMENT OPTIONS AVAILABLE

GLAZING: GLASS THICKNESS TO SUIT REQUIREMENTS
 HARDWARE: VARIOUS STANDARD HARDWARE OPTIONS AVAILABLE (OR CALL TO DISCUSS SPECIFIC COMPONENTS)
 FINISHES: POWDER-COAT / ANODISED / PVF²



02 LOUVRE HEAD
 03 1:2

01 LOUVRE SILL
 03 1:2



T:\USERS\Alvin's stuff\KENT\FINAL TO KENT\Submit\Thermosash_LOUVRE_L3.dwg

SYSTEM : TRIPPLE BANK LOUVRE	TYPE :	SCALE: 1:2 @ A3	DATE: Jan-13	
www.thermosash.co.nz ~AUCKLAND: (09)444-4944 ~WELLINGTON: (04)939-4500 ~CHRISTCHURCH: (03)348-4004		PAGE: Thermosash_LOUVRE_L3		