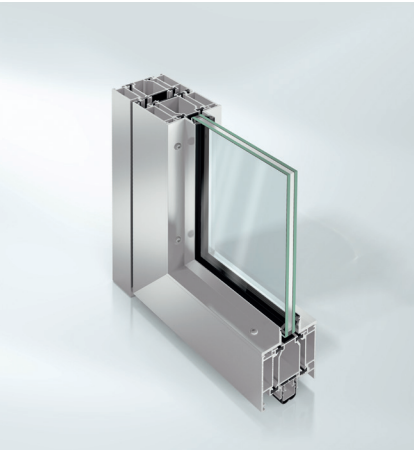


Schüco ADS 80 FR 30

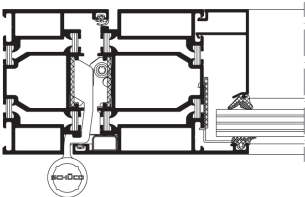
Aluminium fire door system



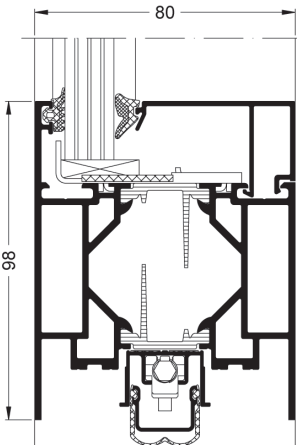
Schüco ADS 80 FR 30



Schüco glazed fire Door ADS 80 FR 30



Horizontal section detail, Schüco Door ADS 80 FR 30, scale 1:3



Vertical section detail, Schüco Door ADS 80 FR 30, door sill rail, scale 1:2

The Schüco Fire Door ADS 80 FR 30 achieves resistance class classifications EI30 (T30, F30) providing up to 30 minutes fire restardant. The system provides burglar resistance to RC3 (WK3) or a combination of resistance to RC2(WK2) and a panic function, as well as optional sound reduction to 42dB.

This series is based on a stable 5-chamber hollow profile with basic profile depth of 80mm. Various design options are available with central glazing or angled glazing beads, concealed top door closers, pre-selectors or door hinges. Further options include a fixed floor-to-ceiling glazing height, vertical silicone joints and an opposed opening door.

Product benefits	
Schüco ADS 80 FR 30	
<ul style="list-style-type: none"> Maximum clear door opening up to 1400mm W x 2988mm H Maximum glass / panel thickness: 42mm Multi-purpose: fire and smoke protection, burglar resistance, safety barrier loading, sound reduction, access control, panic functions Proof of durability in accordance with EN 12400, class 8, for 1 million cycles Mechanical strength Class 4 with the highest protection against vandalism and the excessive use of force. Opposed opening door for fire and smoke protection as new type of opening Use of framelss vertical silicone joints (PG) for fixed glazing can also be combined with doors 	
Fabrication benefits	
<ul style="list-style-type: none"> Reduced number of accessories required for doors with a leaf size up to 1,340 mm x 2,312 mm Use of Schüco fire-resistant foam and fire-resistant joint sealing tape approved Locking cams pre-assembled at the factory allow uniform and flexible installation of all fittings components in the multi-purpose groove Barrel hinges are easy for the fabricator to adjust Efficient fabrication due to door versions without fire boards 	

Technical data		
Test	Standard	Value
Thermal insulation	DIN EN 1077-2	Value in W/(m²K) maximally 1.9
Burglar resistance	DIN V ENV 1627	up to RC3 (WK3)
Air permeability	DIN EN 12207	Class 4
Fire protection	DIN 4102 / EN 1634/EN 1364	F30, T30, G30, EI30, EW30
Durability resistance	EN 12400	Class 8
Mechanical strength	DIN EN 1192	to Class 4

Schüco ADS 80 FR 30



As a leader in innovation for system-based construction, Schüco aluminium door systems combine the highest standards in terms of energy safety, security and design with market-specific requirements.

Schüco International KG

www.schueco.com

www.schueco.de

Folgen Sie uns:
Follow us:



Schüco – System solutions for windows, doors and façades

Based in Bielefeld, the Schüco Group develops and sells system solutions for windows, doors and façades. With 6330 employees worldwide, the company strives to be the industry leader in terms of technology and service both now and in the future. In addition to innovative products for residential and commercial buildings, the building envelope specialist offers consultation and digital solutions for all phases of a building project – from the initial idea through to design, fabrication and installation. Schüco works with 10,000 fabricators and 30,000 architectural practices, as well as construction professionals who commission buildings around the world. Founded in 1951, the company is now active in more than 80 countries and achieved a turnover of 1.995 billion euros in 2021. For more information, visit www.schueco.com

The "Schüco" logo and other logos are protected in Germany and various international markets. We will provide detailed information upon request.

Thermosash 
BUILDING ENVELOPE SOLUTIONS™

SCHÜCO



NZ01, 2025/Printed in New Zealand
We reserve the right to make technical changes and to correct errors. Products may differ from illustrations.

PRODUCTS

CANOPIES
SHOPFRONT
RAINScreens
BALUSTRADES
THERMAL BREAK
DOORS & SLIDERS
CHANNEL GLAZING
MECHANICAL LOUVRES
ROOFLIGHTS & ATRIUMS
COMMERCIAL WINDOWS
SOLARSHADING, LOUVRES & FINS
TOTAL VISION - STRUCTURAL GLAZING
UNITISED CURTAINWALL & PANELWALL FAÇADES
SCHÜCO - HIGH END RESIDENTIAL WINDOWS & DOORS

Auckland

158-164 Central Park Drive,
Henderson, Auckland 0610
PO Box 100-340, North Shore,
Auckland 0745, New Zealand
P: +64 9 444 4944
F: +64 9 444 4886

Wellington

17-19 Marine Parade, Petone,
Lower Hutt 5012, New Zealand
PO Box 38-645, Wellington Mail
Centre, Lower Hutt 5045, New Zealand
P: +64 4 939 4500
F: +64 4 939 4499

Christchurch

12 Braeburn Drive
Hornby, Christchurch 8040
PO Box 313, Christchurch 8140,
New Zealand
P: +64 4 348 4004
F: +64 4 348 4088

www.thermosash.co.nz

www.thermosash-schueco.co.nz