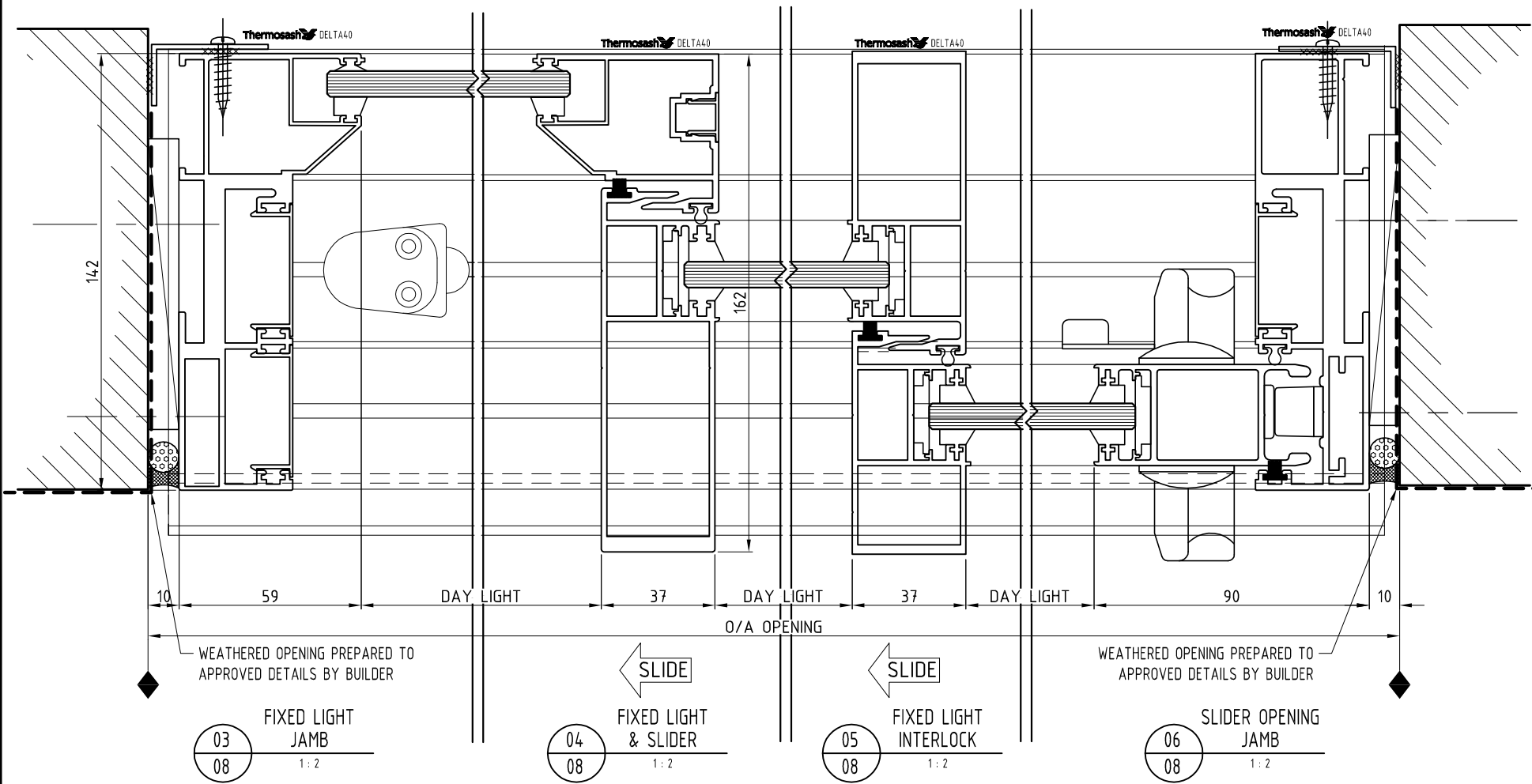
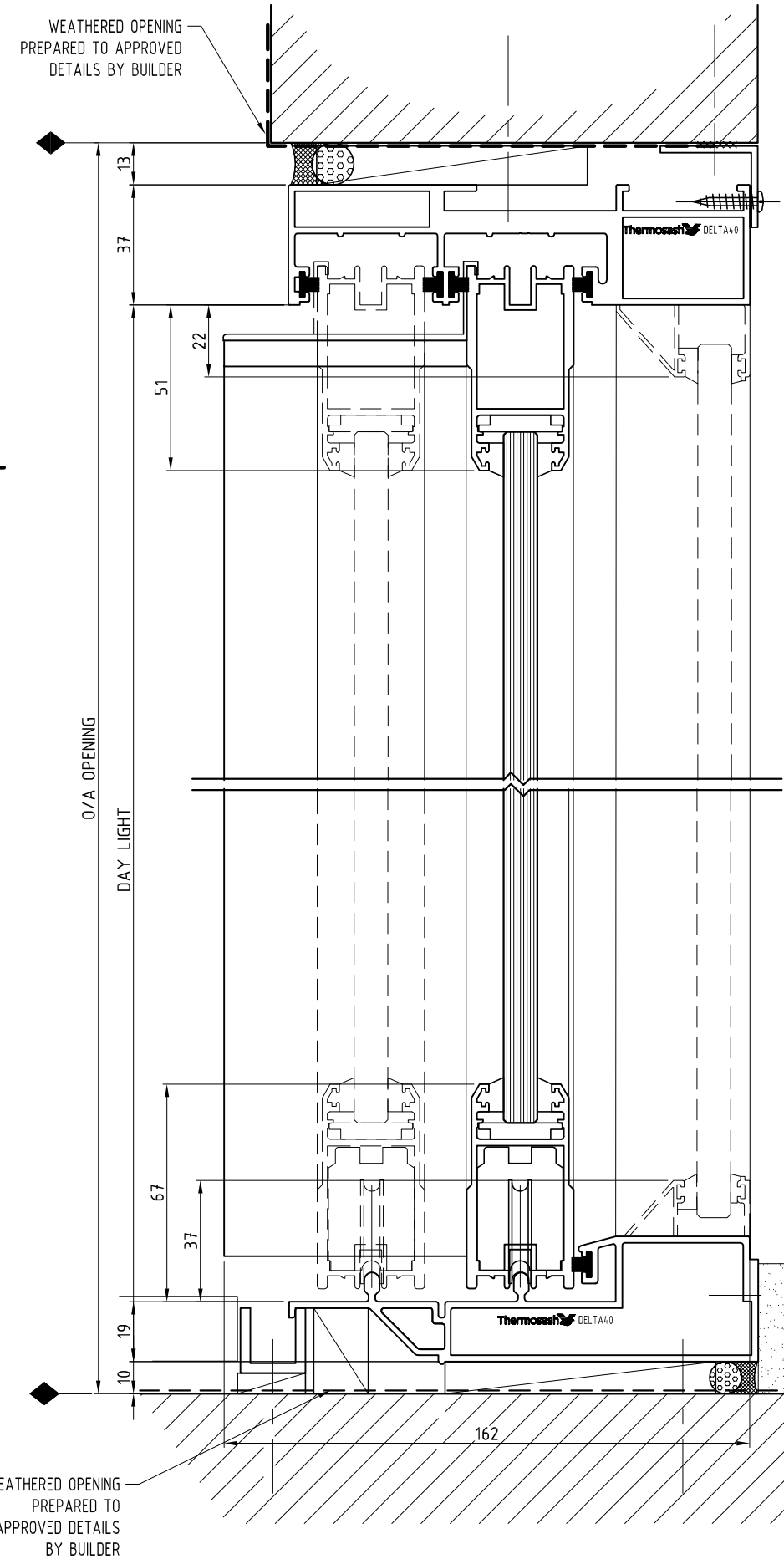
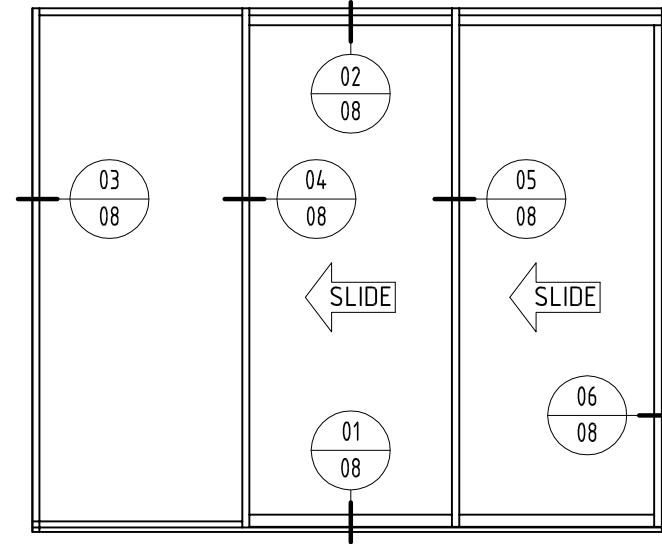


NOTES:

- 1) DRAWING TO BE USED IN CONJUNCTION WITH 'MASTERSPEC' (4521)
- 2) WINDOW SYSTEMS REQUIRE SPECIFIC DESIGN DEPENDING ON SPANS, WIND-LOADS, CLADDING SPECIFIED, ETC.
- 3) INSIDE GLAZE, INTERNAL REINFORCEMENT AND SEISMIC FRAME OPTIONS AVAILABLE

GLAZING: GLASS THICKNESS TO SUIT REQUIREMENTS  
 HARDWARE: STANDARD HARDWARE OPTIONS  
 FINISHES: POWDER-COAT / ANODISED / PVF<sup>2</sup>



SYSTEM :  
 DELTA40  
 HEAVY DUTY COMMERCIAL

TYPE :  
 SLIDER DOOR  
 SINGLE GLAZED  
 DOUBLE STACKED

SCALE:  
 1:2 @ A3

DATE:  
 Apr-13

PAGE:  
 D-08

www.thermosash.co.nz ~AUCKLAND: (09)444-4944 ~WELLINGTON: (04)939-4500 ~CHRISTCHURCH: (03)348-4004

