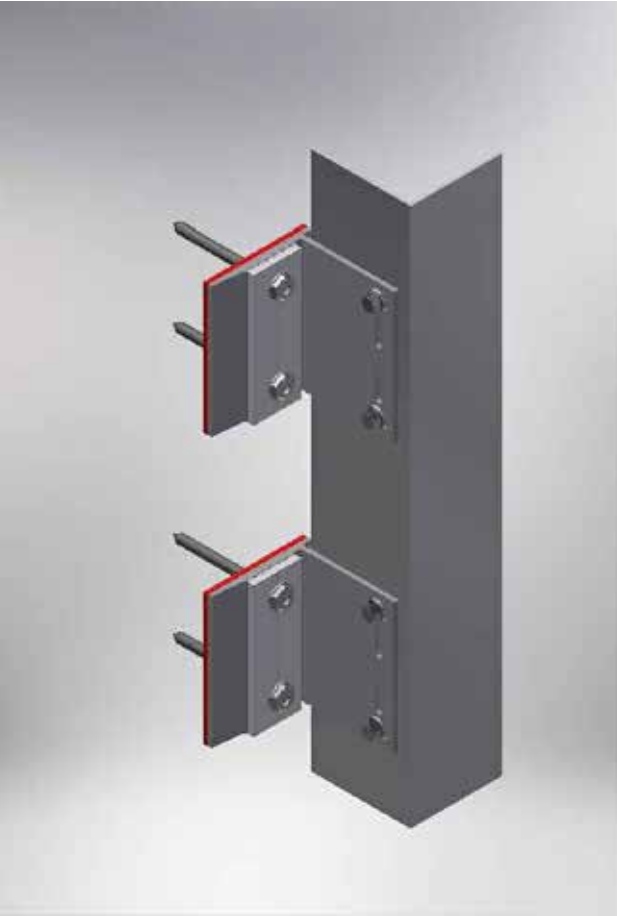


ENCLAD™ EXTRUDED ALUMINIUM PLANKS
- VERTICALLY LAID
ENCLAD™ EN01 SUPPORT SYSTEM
SECRET FIXED

DRAWING REGISTER			
PAGE	DETAIL DESCRIPTION	DETAIL #	REV.
00/16	COVER PAGE	00	NOV 22
01/16	CAVITY SET OUT	01	NOV 22
02/16	SCHEMATIC	02	NOV 22
03/16	VERTICAL PANEL JOINT DETAIL (PLAN VIEW)	03	NOV 22
04/16	BRICKWALL ABUTMENT DETAIL (PLAN VIEW)	04	NOV 22
05/16	INTERNAL CORNER PANEL DETAIL (PLAN VIEW)	05	NOV 22
06/16	EXTERNAL CORNER PANEL DETAIL (PLAN VIEW)	06	NOV 22
07/16	WINDOW JAMB DETAIL (PLAN VIEW)	07	NOV 22
08/16	DOOR JAMB DETAIL (PLAN VIEW)	08	NOV 22
09/16	CONCRETE WALL ABUTMENT DETAIL (PLAN VIEW)	09	NOV 22
10/16	HORIZONTAL PANEL JOINT DETAIL (SECTION VIEW)	10	NOV 22
11/16	PARAPET FLASHING DETAIL (SECTION VIEW)	11	NOV 22
12/16	WINDOW HEAD DETAIL (SECTION VIEW)	12	NOV 22
13/16	DOOR HEAD DETAIL (SECTION VIEW)	13	NOV 22
14/16	WINDOW SILL DETAIL (SECTION VIEW)	14	NOV 22
15/16	BRICKWALL AT BASE DRIP DETAIL (SECTION VIEW)	15	NOV 22
16/16	PLANK LIST	16	NOV 22



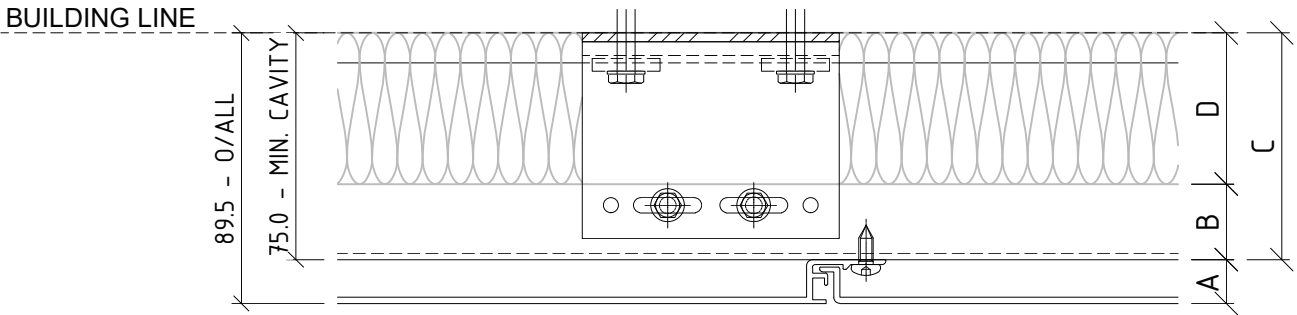
Cladding Type :
ENCLAD™ EXTRUDED ALUMINIUM PLANKS - VERTICALLY LAID

Support System :
ENCLAD™ EN01 - SECRET FIXED

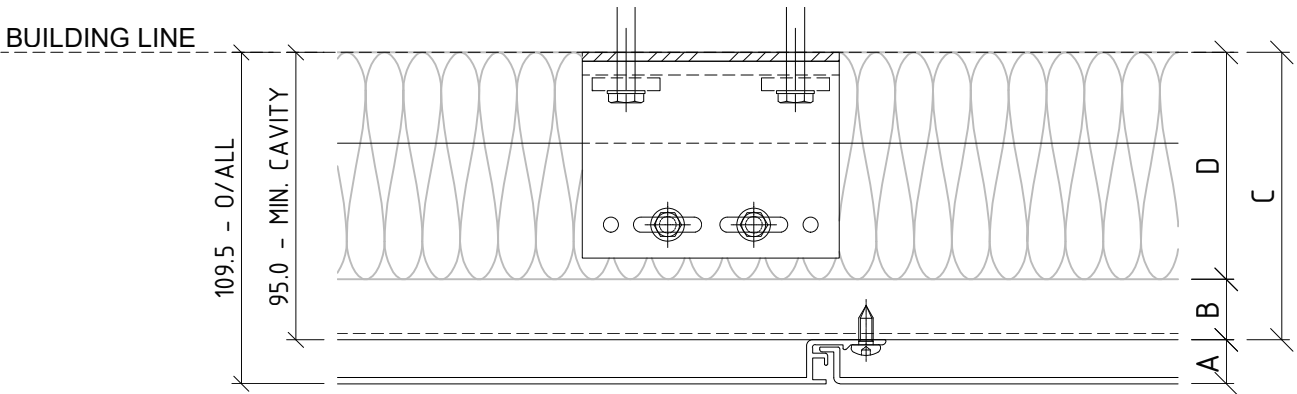
Detail Description :
COVER PAGE

Scale @ A3 :	Rev. : NOV 2022
System # : EXP-V-EN01-SF1	Detail # : 00

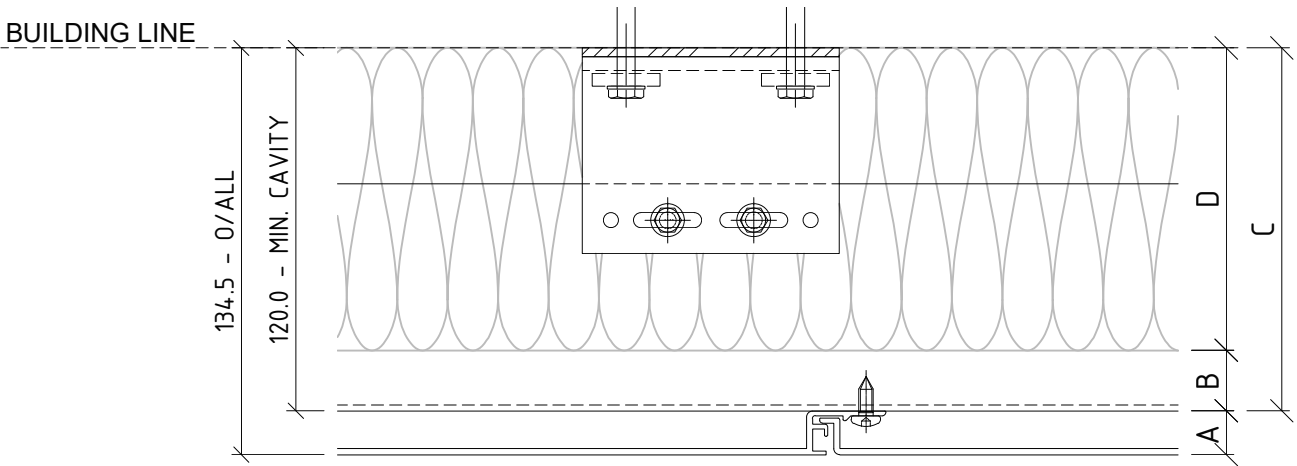
EN01 - ADJUSTABLE SYSTEM CAVITY



50mm THICK INSULATION
IN CAVITY ZONE



75mm THICK INSULATION
IN CAVITY ZONE



100mm THICK INSULATION
IN CAVITY ZONE

01 CAVITY SET OUT
ENCLADTM EXTRUDED ALUMINIUM PLANKS

ADJUSTABLE SYSTEMS ACCOMODATE BUILDING TOLERANCE AND INCORPORATION
OF INSULATION FOR H1 REQUIREMENTS - STANDARD SYSTEM CAVITY SHOWN -
BESPOKE OPTIONS AVAILABLE FOR PROJECT SPECIFIC REQUIREMENTS

Thermosash

BUILDING ENVELOPE SOLUTIONS™

WoodsGlass

BUILDING INNOVATIVE GLAZING SOLUTIONS

COPYRIGHT : THESE DESIGNS, DETAILS AND/OR SPECIFICATIONS AND THE COPYRIGHT THEREIN, REMAIN THE PROPERTY OF THERMOSASH COMMERCIAL LIMITED.

DISCLAIMER : THESE DETAILS ARE PROVIDED FOR INDICATIVE PURPOSES ONLY. CONSTRUCTION/SYSTEM DETAILS CAN VARY DEPENDING ON PROJECT SPECIFIC SPECIFICATION AND ENGINEERING REQUIREMENTS. THE DESIGNER IS RESPONSIBLE FOR ENSURING DETAILS SATISFY ALL NEW ZEALAND BUILDING CODE CLAUSES. THE DESIGNER IS RESPONSIBLE FOR ENSURING BUILDING WRAPS, FIRESTOPS AND INSULATION/SPECIFICATION COMPLY WITH MANUFACTURERS RECOMMENDATIONS AND NZBC REGULATIONS. REFER TO THERMOSASH WEBSITE FOR FULL TERMS AND CONDITIONS.

LEGEND

A	ENCLAD TM EXTRUDED ALUMINIUM PLANKS
B	20mm - 25mm NOMINAL VENTILATION ZONE (AIR GAP)
C	* 75mm SYSTEM CAVITY TO ACCOMMODATE 50mm THICK INSULATION
D	* 50mm INSULATION (OPTION BY INSITE) FIRE STOP (OPTION BY INSITE)
*	OTHER OPTIONS AVAILABLE (PROJECT SPECIFIC) 95mm SYSTEM CAVITY FOR 75mm THICK INSULATION 120mm SYSTEM CAVITY FOR 100mm THICK INSULATION

Cladding Type :

ENCLADTM EXTRUDED ALUMINIUM PLANKS - VERTICALLY LAID

Support System :

ENCLADTM EN01 - SECRET FIXED

Detail Description :

CAVITY SETOUT (PLAN VIEW)

Scale @ A3 : 1:2.5

Rev. : NOV 2022

System # :

EXP-V-EN01-SF1

Detail # :

01

ENCLADTM RAINSCREEN SYSTEMS

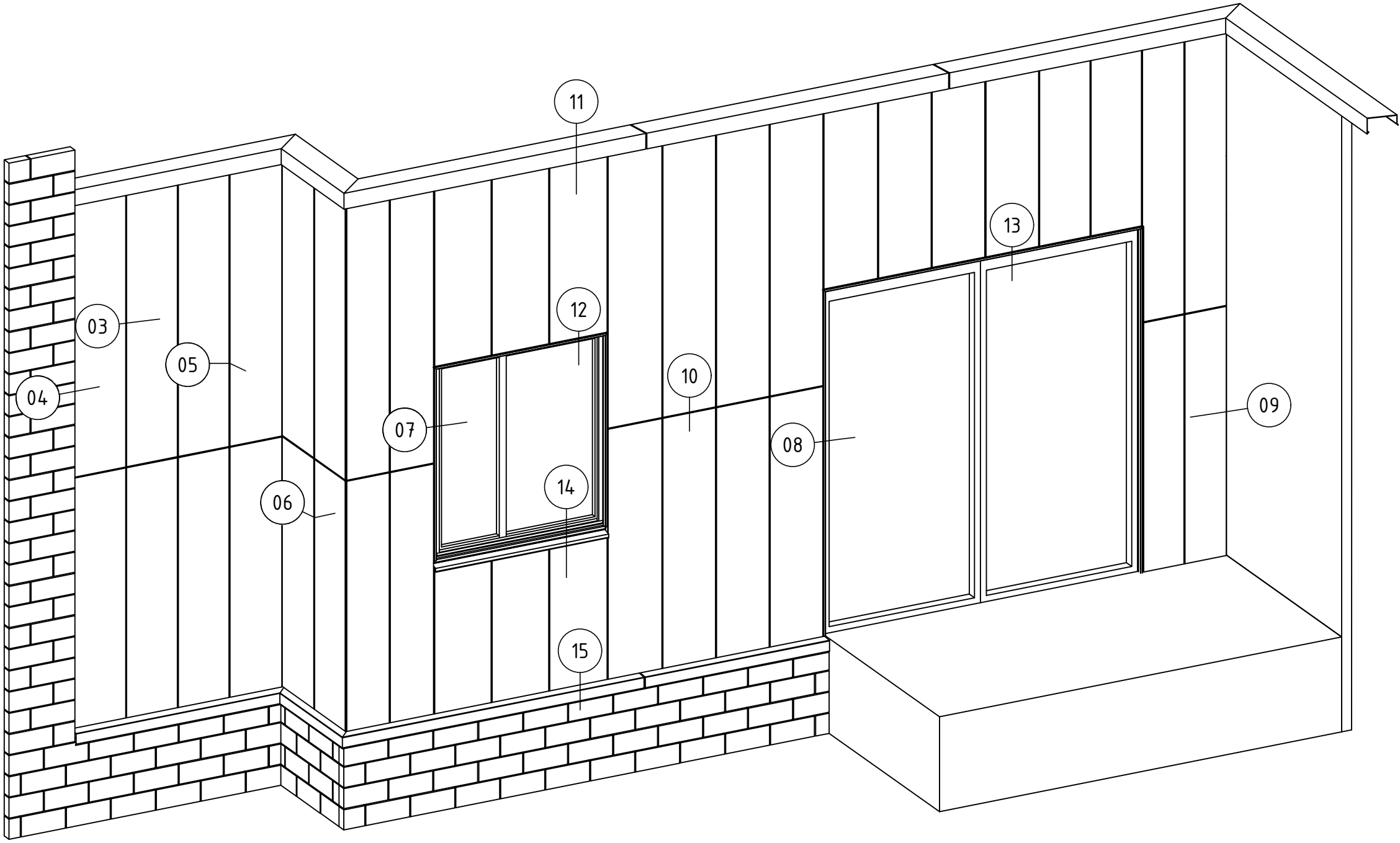
Thermosash

BUILDING ENVELOPE SOLUTIONS™

158 CENTRAL PARK DRIVE,
HENDERSON,
AUCKLAND 0610
NEW ZEALAND

P: +64 9 444 4944

www.thermosash.co.nz



02 SCHEMATIC
ENCLAD™ EXTRUDED ALUMINIUM PLANKS

Cladding Type :
ENCLAD™ EXTRUDED ALUMINIUM PLANKS - VERTICALLY LAID

Support System :
ENCLAD™ EN01 - SECRET FIXED

Detail Description :
SCHEMATIC

Scale @ A3 : 1:5	Rev. : NOV 2022
System # : EXP-V-EN01-SF1	Detail # : 02

COPYRIGHT : THESE DESIGNS, DETAILS AND/OR SPECIFICATIONS AND THE COPYRIGHT THEREIN, REMAIN THE PROPERTY OF THERMOSASH COMMERCIAL LIMITED.

DISCLAIMER : THESE DETAILS ARE PROVIDED FOR INDICATIVE PURPOSES ONLY. CONSTRUCTION/SYSTEM DETAILS CAN VARY DEPENDING ON PROJECT SPECIFIC SPECIFICATION AND ENGINEERING REQUIREMENTS. THE DESIGNER IS RESPONSIBLE FOR ENSURING DETAILS SATISFY ALL NEW ZEALAND BUILDING CODE CLAUSES. THE DESIGNER IS RESPONSIBLE FOR ENSURING BUILDING WRAPS, FIRESTOPS AND INSULATION/SPECIFICATION COMPLY WITH MANUFACTURERS RECOMMENDATIONS AND NZBC REGULATIONS. REFER TO THERMOASH WEBSITE FOR FULL TERMS AND CONDITIONS.

LEGEND

A	ENCLAD™ EXTRUDED ALUMINIUM PLANKS
B	20mm - 25mm NOMINAL VENTILATION ZONE (AIR GAP)
C	* 75mm SYSTEM CAVITY TO ACCOMMODATE 50mm THICK INSULATION
D	* 50mm INSULATION (OPTION BY INSITE) FIRE STOP (OPTION BY INSITE)
*	OTHER OPTIONS AVAILABLE (PROJECT SPECIFIC) 95mm SYSTEM CAVITY FOR 75mm THICK INSULATION 120mm SYSTEM CAVITY FOR 100mm THICK INSULATION

PARTS LIST

[illegible]

Cladding Type :

ENCLAD™ EXTRUDED ALUMINIUM PLANKS - VERTICALLY LAID

Support System :

ENCLAD™ EN01 - SECRET FIXED

Detail Description :

VERTICAL PANEL JOINT DETAIL (PLAN VIEW)

Scale @ A3 : 1:2

Rev. : NOV 2022

System # :

Detail # :	
------------	--

EXP-V-EN01-SF1

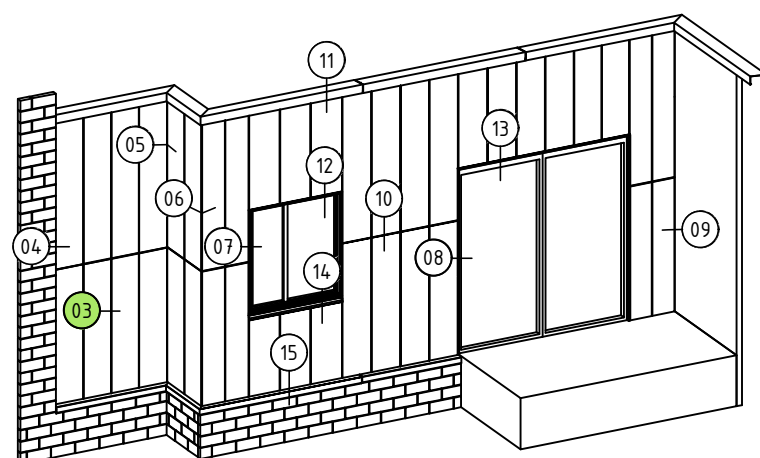
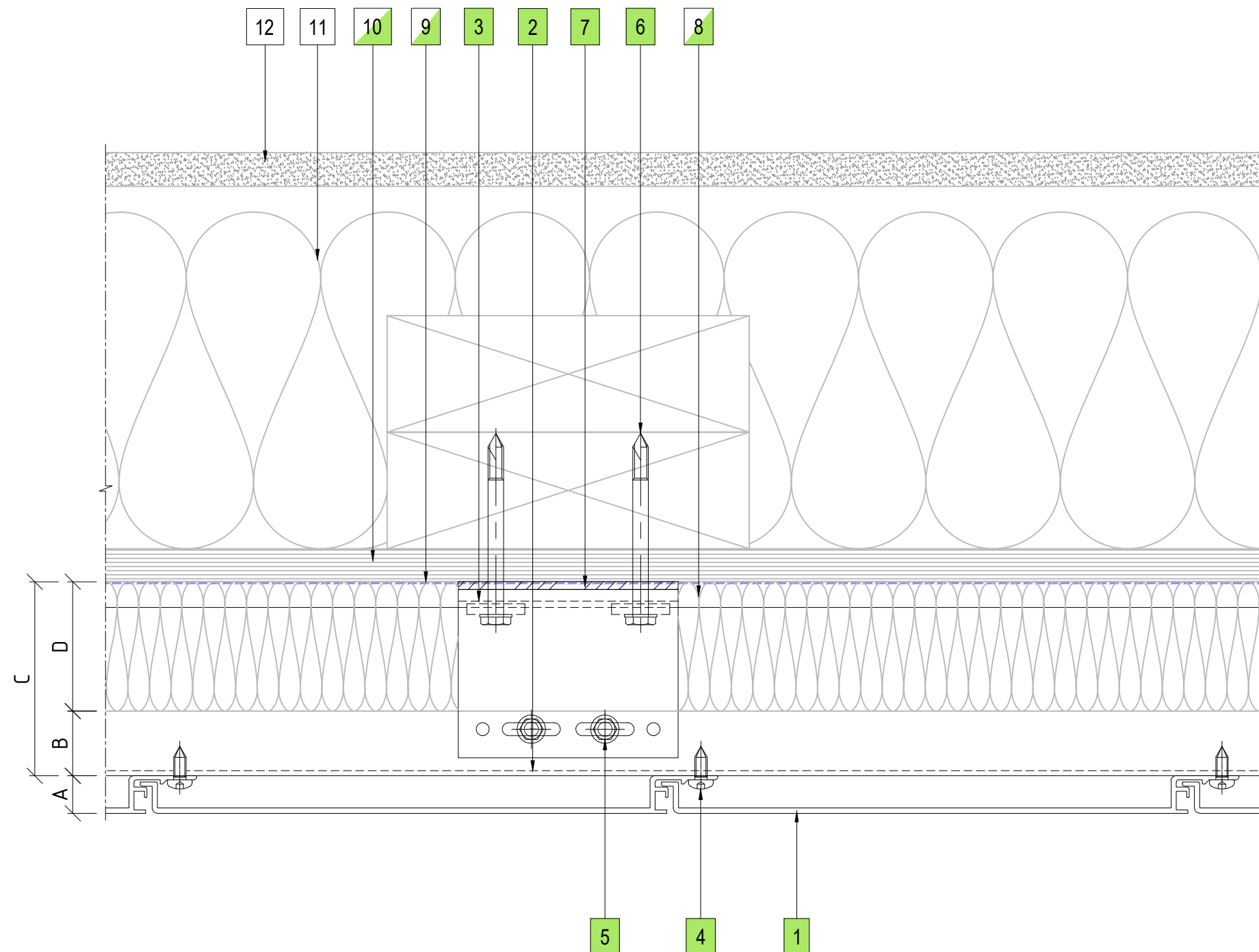
03

ENCLAD™ RAINSCREEN SYSTEMS

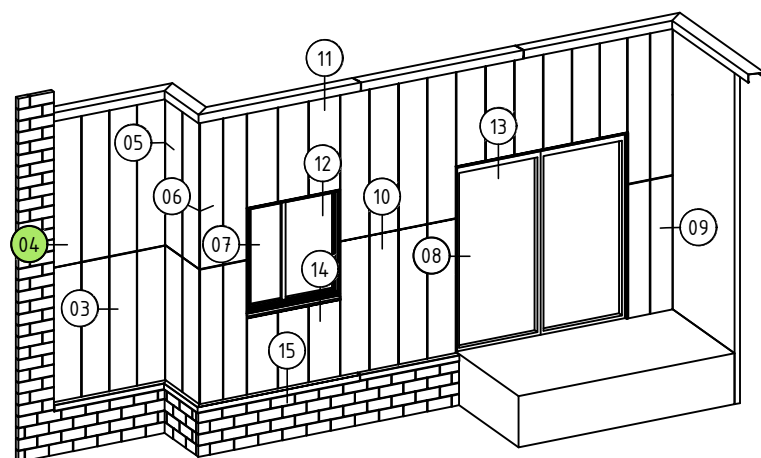
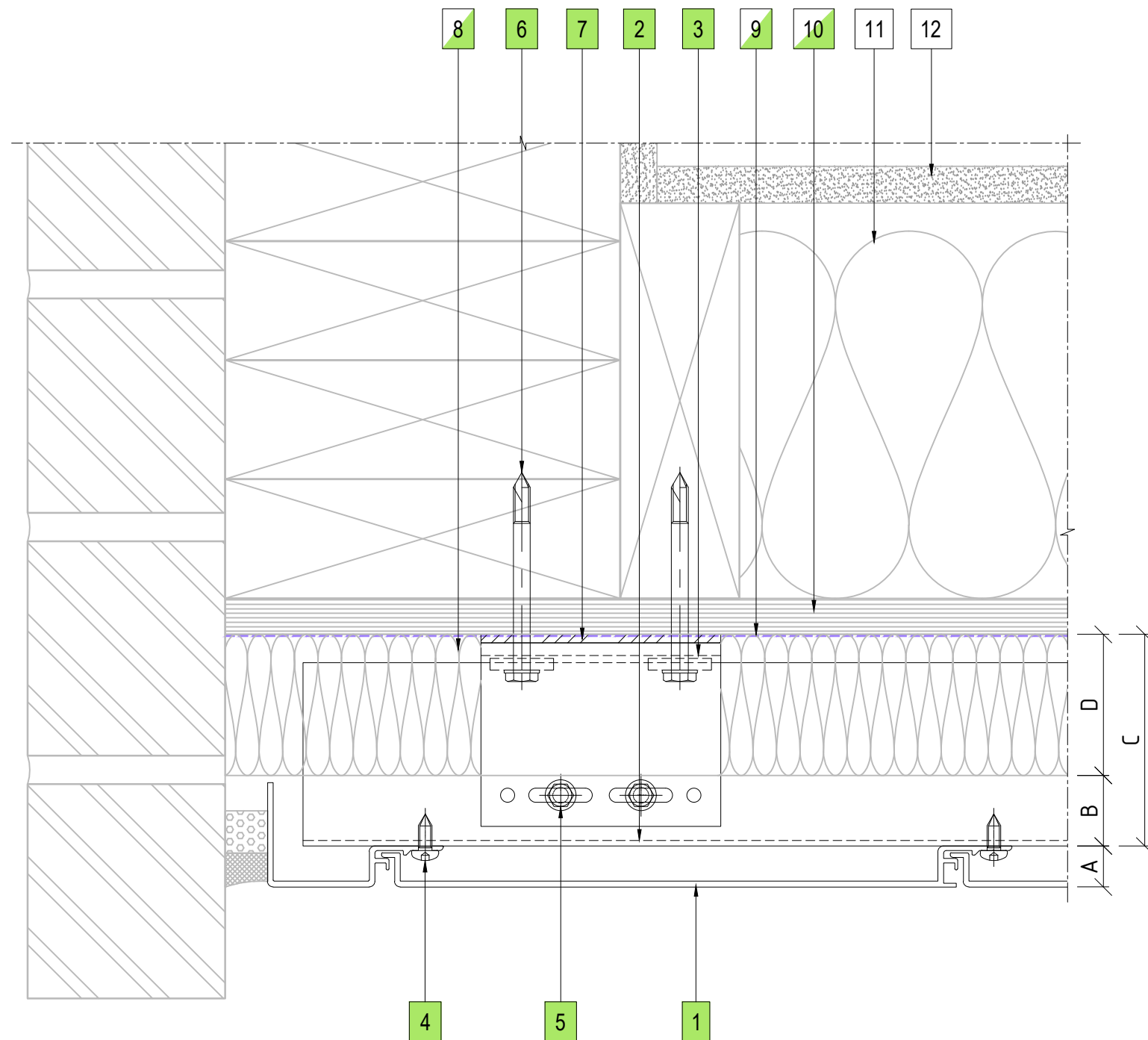


158 CENTRAL PARK DRIVE,
HENDERSON,
AUCKLAND 0610
NEW ZEALAND

P: +64 9 444 4944
www.thermosash.co.nz



03 VERTICAL PANEL JOINT DETAIL
ENCLAD™ EXTRUDED ALUMINIUM PLANKS



04 BRICKWALL ABUTMENT DETAIL
ENCLAD™ EXTRUDED ALUMINIUM PLANKS

COPYRIGHT : THESE DESIGNS, DETAILS AND/OR SPECIFICATIONS AND THE COPYRIGHT THEREIN, REMAIN THE PROPERTY OF THERMOSASH COMMERCIAL LIMITED.

DISCLAIMER : THESE DETAILS ARE PROVIDED FOR INDICATIVE PURPOSES ONLY. CONSTRUCTION/SYSTEM DETAILS CAN VARY DEPENDING ON PROJECT SPECIFIC SPECIFICATION AND ENGINEERING REQUIREMENTS. THE DESIGNER IS RESPONSIBLE FOR ENSURING DETAILS SATISFY ALL NEW ZEALAND BUILDING CODE CLAUSES. THE DESIGNER IS RESPONSIBLE FOR ENSURING BUILDING WRAPS, FIRESTOPS AND INSULATION/SPECIFICATION COMPLY WITH MANUFACTURERS RECOMMENDATIONS AND NZBC REGULATIONS. REFER TO THERMOSASH WEBSITE FOR FULL TERMS AND CONDITIONS.

LEGEND

A	ENCLAD™ EXTRUDED ALUMINIUM PLANKS
B	20mm - 25mm NOMINAL VENTILATION ZONE (AIR GAP)
C	* 75mm SYSTEM CAVITY TO ACCOMMODATE 50mm THICK INSULATION
D	* 50mm INSULATION (OPTION BY INSITE) FIRE STOP (OPTION BY INSITE)
*	OTHER OPTIONS AVAILABLE (PROJECT SPECIFIC) 95mm SYSTEM CAVITY FOR 75mm THICK INSULATION 120mm SYSTEM CAVITY FOR 100mm THICK INSULATION

PARTS LIST

1	ENCLAD™ EXTRUDED ALUMINIUM PLANKS
2	ENCLAD EN01 ALUMINIUM SUPPORT PROFILE
3	ENCLAD EN01 ALUMINIUM HELPING HAND BRACKET
4	ENCLAD PANEL FIXING (STAINLESS STEEL)
5	ENCLAD BRACKET TO RAIL FIXING (STAINLESS STEEL)
6	ENCLAD HOST STRUCTURAL FIXING (STAINLESS STEEL)
7	ENCLAD THERMAL ISOLATION PAD
8	CAVITY INSULATION (OPTION BY INSITE)
9	BUILDING WRAP / MEMBRANE (OPTION BY INSITE)
10	RIGID AIR BARRIER / SHEATHING BOARD (OPTION BY INSITE)
11	WALL INSULATION (BY OTHERS)
12	PLASTER BOARD (BY OTHERS)

Cladding Type :

ENCLAD™ EXTRUDED ALUMINIUM PLANKS - VERTICALLY LAID

Support System :

ENCLAD™ EN01 - SECRET FIXED

Detail Description :

BRICKWALL ABUTMENT DETAIL (PLAN VIEW)

Scale @ A3 : 1:2

Rev. : NOV 2022

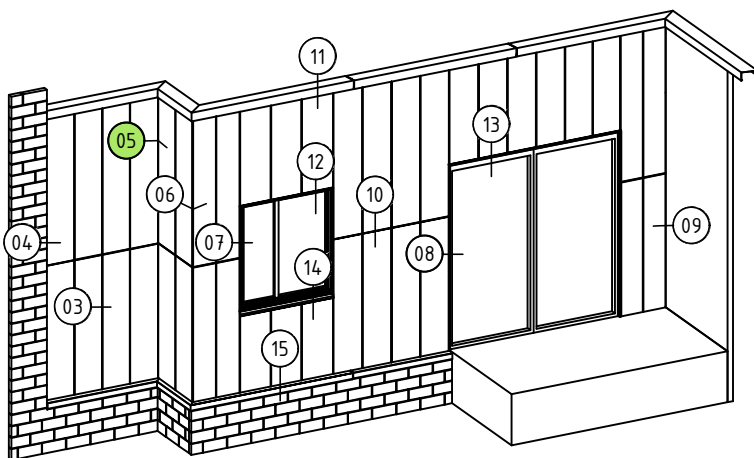
System # :

Detail # :	
------------	--

EXP-V-EN01-SF1

04

ENCLAD™ RAINSCREEN SYSTEMS



05 INTERNAL CORNER PANEL DETAIL
ENCLAD™ EXTRUDED ALUMINIUM PLANKS

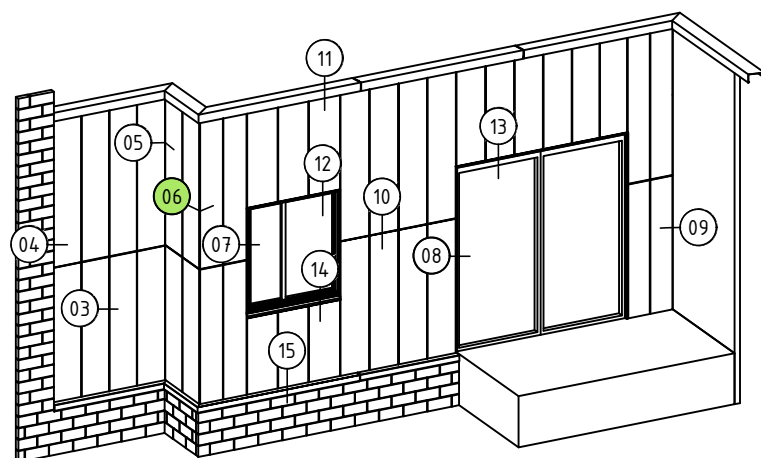
DISCLAIMER : THESE DETAILS ARE PROVIDED FOR INDICATIVE PURPOSES ONLY. CONSTRUCTION/SYSTEM DETAILS CAN VARY DEPENDING ON PROJECT SPECIFIC SPECIFICATION AND ENGINEERING REQUIREMENTS. THE DESIGNER IS RESPONSIBLE FOR ENSURING DETAILS SATISFY ALL NEW ZEALAND BUILDING CODE CLAUSES. THE DESIGNER IS RESPONSIBLE FOR ENSURING BUILDING WRAPS, FIRESTOPS AND INSULATION/SPECIFICATION COMPLY WITH MANUFACTURERS RECOMMENDATIONS AND NZBC REGULATIONS. REFER TO THERMOSHASH WEBSITE FOR FULL TERMS AND CONDITIONS.

A	ENCLAD™ EXTRUDED ALUMINIUM PLANKS
B	20mm - 25mm NOMINAL VENTILATION ZONE (AIR GAP)
C	* 75mm SYSTEM CAVITY TO ACCOMMODATE 50mm THICK INSULATION
D	* 50mm INSULATION (OPTION BY INSITE) FIRE STOP (OPTION BY INSITE)
*	OTHER OPTIONS AVAILABLE (PROJECT SPECIFIC) 95mm SYSTEM CAVITY FOR 75mm THICK INSULATION 120mm SYSTEM CAVITY FOR 100mm THICK INSULATION

1	ENCLAD™ EXTRUDED ALUMINIUM PLANKS
2	ENCLAD EN01 ALUMINIUM SUPPORT PROFILE
3	ENCLAD EN01 ALUMINIUM HELPING HAND BRACKET
4	ENCLAD PANEL FIXING (STAINLESS STEEL)
5	ENCLAD BRACKET TO RAIL FIXING (STAINLESS STEEL)
6	ENCLAD HOST STRUCTURAL FIXING (STAINLESS STEEL)
7	ENCLAD THERMAL ISOLATION PAD
8	CAVITY INSULATION (OPTION BY INSITE)
9	BUILDING WRAP / MEMBRANE (OPTION BY INSITE)
10	RIGID AIR BARRIER / SHEATHING BOARD (OPTION BY INSITE)
11	WALL INSULATION (BY OTHERS)
12	PLASTER BOARD (BY OTHERS)

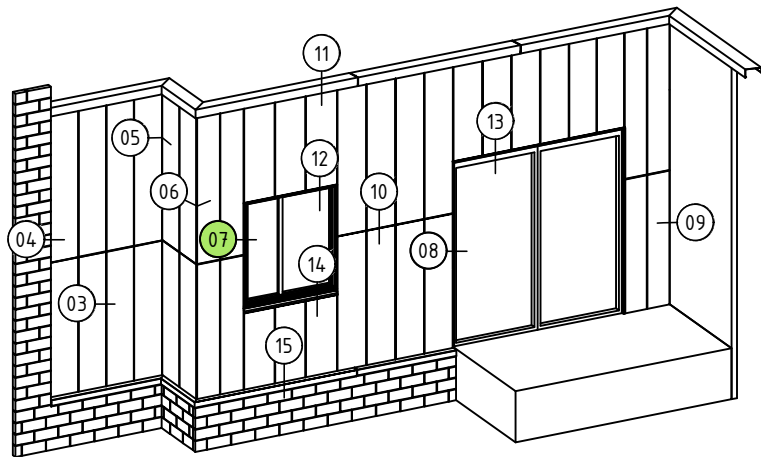
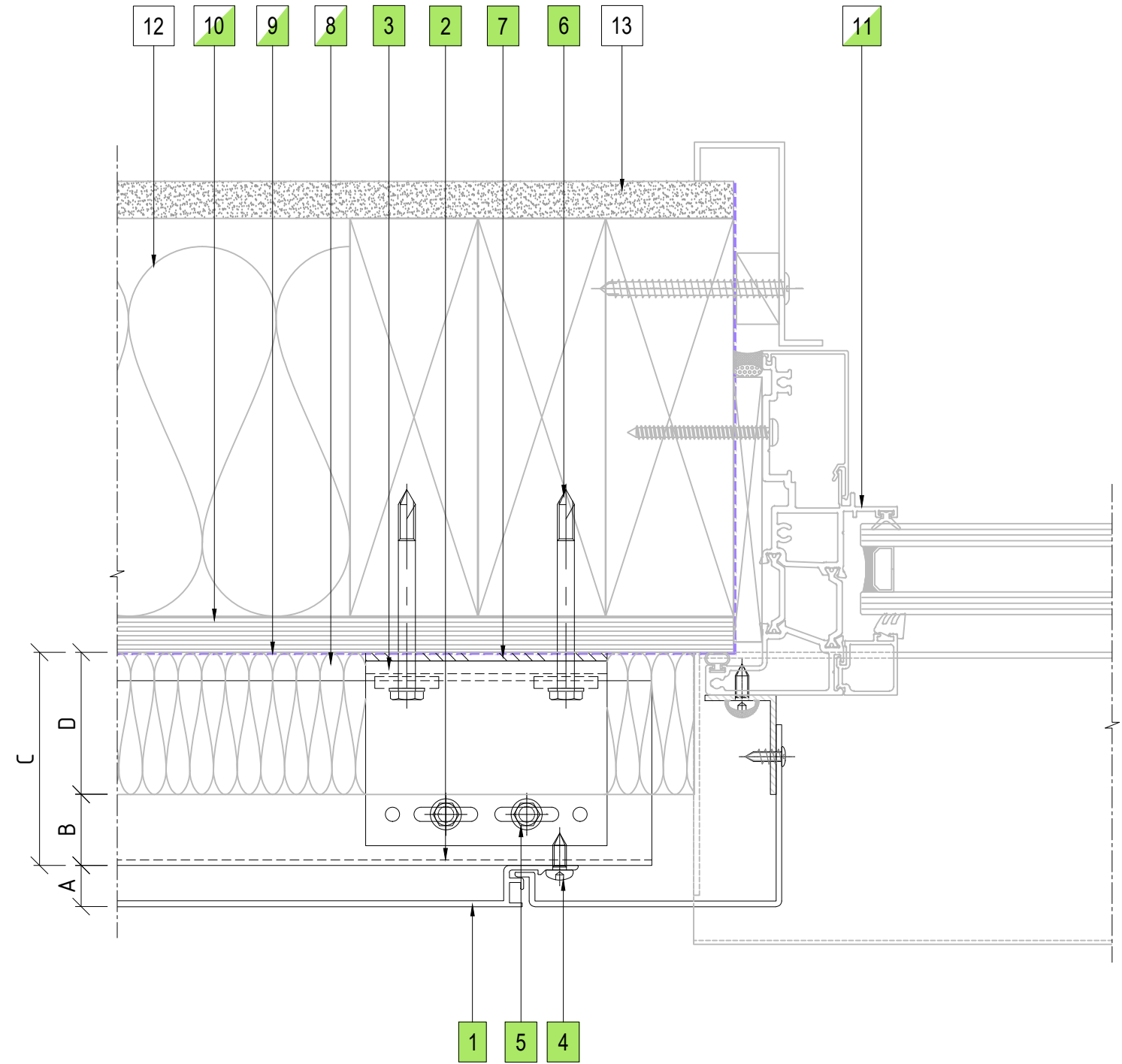
05

P: +64 9 444 4944
www.thermosash.co.nz



06 EXTERNAL CORNER PANEL DETAIL
ENCLAD™ EXTRUDED ALUMINIUM PLANKS

P: +64 9 444 4944
www.thermosash.co.nz



07 WINDOW JAMB DETAIL
ENCLAD™ EXTRUDED ALUMINIUM PLANKS

Thermosash

WOODSGlass

COPYRIGHT : THESE DESIGNS, DETAILS AND/OR SPECIFICATIONS AND THE COPYRIGHT THEREIN, REMAIN THE PROPERTY OF THERMOSASH COMMERCIAL LIMITED.

DISCLAIMER : THESE DETAILS ARE PROVIDED FOR INDICATIVE PURPOSES ONLY. CONSTRUCTION/SYSTEM DETAILS CAN VARY DEPENDING ON PROJECT SPECIFIC SPECIFICATION AND ENGINEERING REQUIREMENTS. THE DESIGNER IS RESPONSIBLE FOR ENSURING DETAILS SATISFY ALL NEW ZEALAND BUILDING CODE CLAUSES. THE DESIGNER IS RESPONSIBLE FOR ENSURING BUILDING WRAPS, FIRESTOPS AND INSULATION/SPECIFICATION COMPLY WITH MANUFACTURERS RECOMMENDATIONS AND NZBC REGULATIONS. REFER TO THERMOSASH WEBSITE FOR FULL TERMS AND CONDITIONS.

LEGEND

A	ENCLAD™ EXTRUDED ALUMINIUM PLANKS
B	20mm - 25mm NOMINAL VENTILATION ZONE (AIR GAP)
C	* 75mm SYSTEM CAVITY TO ACCOMMODATE 50mm THICK INSULATION
D	* 50mm INSULATION (OPTION BY INSITE) FIRE STOP (OPTION BY INSITE)
*	OTHER OPTIONS AVAILABLE (PROJECT SPECIFIC) 95mm SYSTEM CAVITY FOR 75mm THICK INSULATION 120mm SYSTEM CAVITY FOR 100mm THICK INSULATION

PARTS LIST

1	ENCLAD™ EXTRUDED ALUMINIUM PLANKS
2	ENCLAD EN01 ALUMINIUM SUPPORT PROFILE
3	ENCLAD EN01 ALUMINIUM HELPING HAND BRACKET
4	ENCLAD PANEL FIXING (STAINLESS STEEL)
5	ENCLAD BRACKET TO RAIL FIXING (STAINLESS STEEL)
6	ENCLAD HOST STRUCTURAL FIXING (STAINLESS STEEL)
7	ENCLAD THERMAL ISOLATION PAD
8	CAVITY INSULATION (OPTION BY INSITE)
9	BUILDING WRAP / MEMBRANE (OPTION BY INSITE)
10	RIGID AIR BARRIER / SHEATHING BOARD (OPTION BY INSITE)
11	ALUMINIUM DOORS, WINDOWS & REVEALS (OPTION BY INSITE)
12	WALL INSULATION (BY OTHERS)
13	PLASTER BOARD (BY OTHERS)

Cladding Type :

ENCLAD™ EXTRUDED ALUMINIUM PLANKS - VERTICALLY LAID

Support System :

ENCLAD™ EN01 - SECRET FIXED

Detail Description :

WINDOW JAMB DETAIL (PLAN VIEW)

Scale @ A3 : 1:2

Rev. : NOV 2022

System # :

EXP-V-EN01-SF1

Detail # :

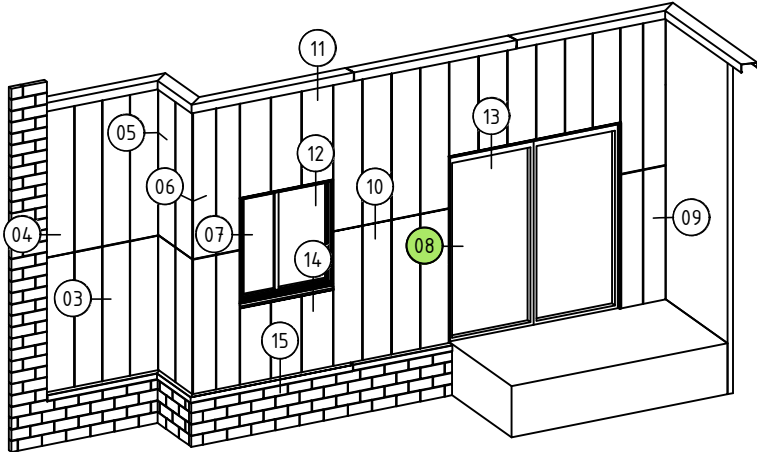
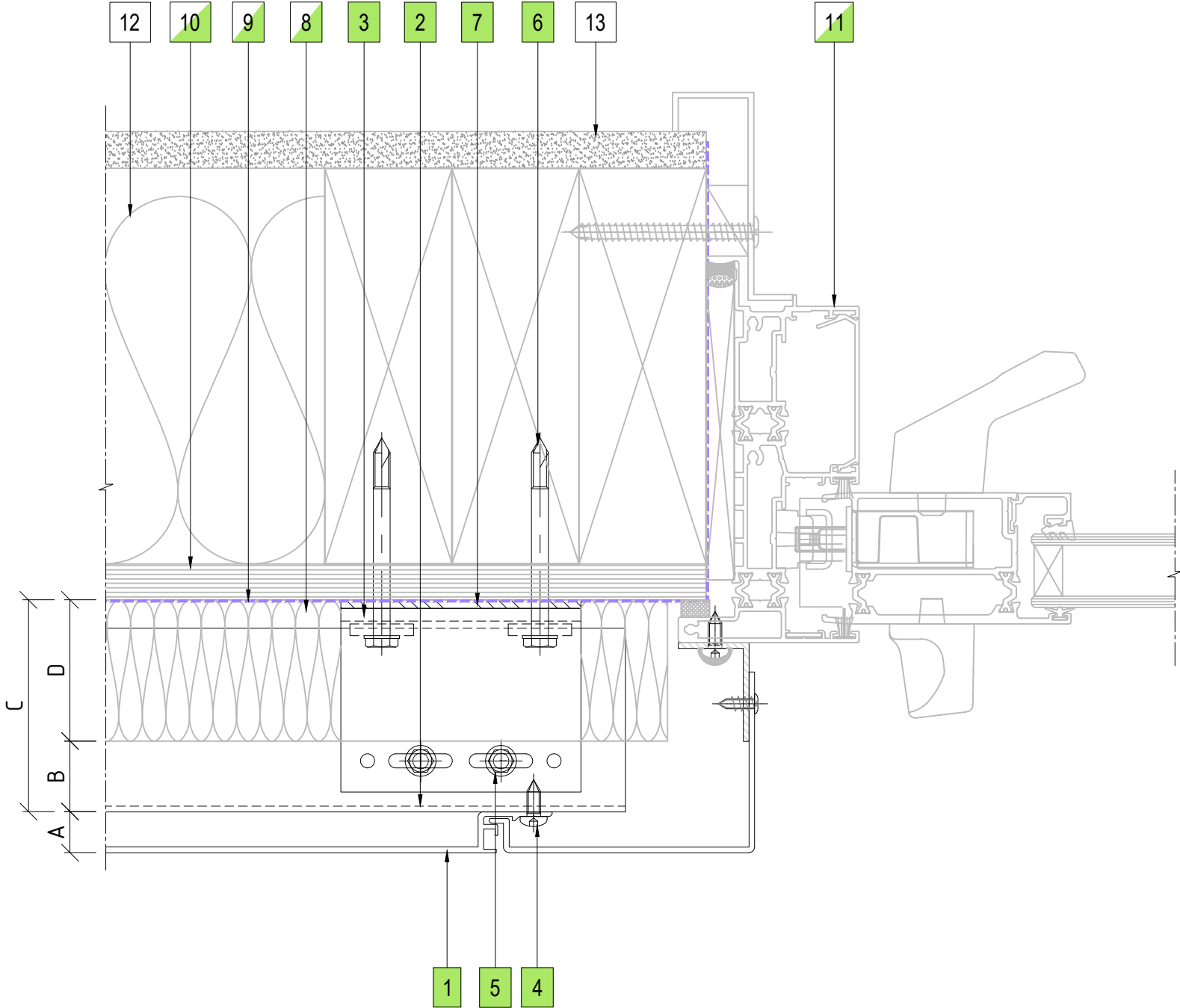
07

ENCLAD™ RAINSCREEN SYSTEMS

Thermosash

WOODSGlass

158 CENTRAL PARK DRIVE,
HENDERSON,
AUCKLAND 0610
NEW ZEALAND
P: +64 9 444 4944
www.thermosash.co.nz



08 DOOR JAMB DETAIL
ENCLAD™ EXTRUDED ALUMINIUM PLANKS

Thermosash

WOODSGlass

Thermosash

WOODSGlass

COPYRIGHT : THESE DESIGNS, DETAILS AND/OR SPECIFICATIONS AND THE COPYRIGHT THEREIN, REMAIN THE PROPERTY OF THERMOSASH COMMERCIAL LIMITED.

DISCLAIMER : THESE DETAILS ARE PROVIDED FOR INDICATIVE PURPOSES ONLY. CONSTRUCTION/SYSTEM DETAILS CAN VARY DEPENDING ON PROJECT SPECIFIC SPECIFICATION AND ENGINEERING REQUIREMENTS. THE DESIGNER IS RESPONSIBLE FOR ENSURING DETAILS SATISFY ALL NEW ZEALAND BUILDING CODE CLAUSES. THE DESIGNER IS RESPONSIBLE FOR ENSURING BUILDING WRAPS, FIRESTOPS AND INSULATION/SPECIFICATION COMPLY WITH MANUFACTURERS RECOMMENDATIONS AND NZBC REGULATIONS. REFER TO THERMOSASH WEBSITE FOR FULL TERMS AND CONDITIONS.

LEGEND

A	ENCLAD™ EXTRUDED ALUMINIUM PLANKS
B	20mm - 25mm NOMINAL VENTILATION ZONE (AIR GAP)
C	* 75mm SYSTEM CAVITY TO ACCOMMODATE 50mm THICK INSULATION
D	* 50mm INSULATION (OPTION BY INSITE) FIRE STOP (OPTION BY INSITE)
*	OTHER OPTIONS AVAILABLE (PROJECT SPECIFIC) 95mm SYSTEM CAVITY FOR 75mm THICK INSULATION 120mm SYSTEM CAVITY FOR 100mm THICK INSULATION

PARTS LIST

1	ENCLAD™ EXTRUDED ALUMINIUM PLANKS
2	ENCLAD EN01 ALUMINIUM SUPPORT PROFILE
3	ENCLAD EN01 ALUMINIUM HELPING HAND BRACKET
4	ENCLAD PANEL FIXING (STAINLESS STEEL)
5	ENCLAD BRACKET TO RAIL FIXING (STAINLESS STEEL)
6	ENCLAD HOST STRUCTURAL FIXING (STAINLESS STEEL)
7	ENCLAD THERMAL ISOLATION PAD
8	CAVITY INSULATION (OPTION BY INSITE)
9	BUILDING WRAP / MEMBRANE (OPTION BY INSITE)
10	RIGID AIR BARRIER / SHEATHING BOARD (OPTION BY INSITE)
11	ALUMINIUM DOORS, WINDOWS & REVEALS (OPTION BY INSITE)
12	WALL INSULATION (BY OTHERS)
13	PLASTER BOARD (BY OTHERS)

Cladding Type :

ENCLAD™ EXTRUDED ALUMINIUM PLANKS - VERTICALLY LAID

Support System :

ENCLAD™ EN01 - SECRET FIXED

Detail Description :

DOOR JAMB DETAIL (PLAN VIEW)

Scale @ A3 : 1:2

Rev. : NOV 2022

System # :

EXP-V-EN01-SF1

Detail # :

08

ENCLAD™ RAINSCREEN SYSTEMS

Thermosash

WOODSGlass

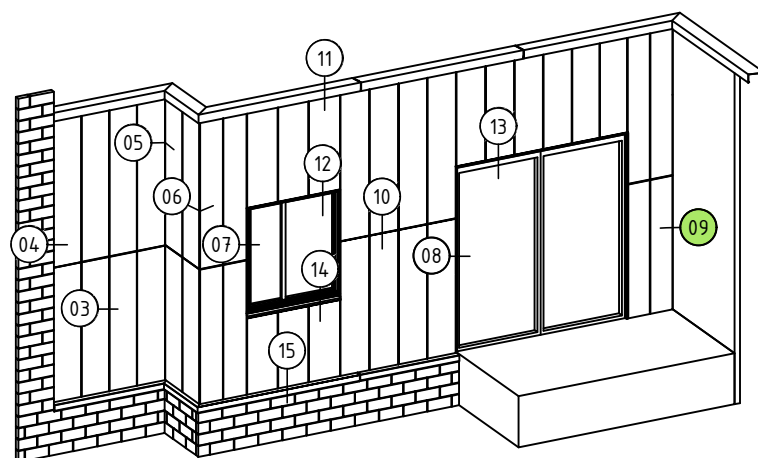
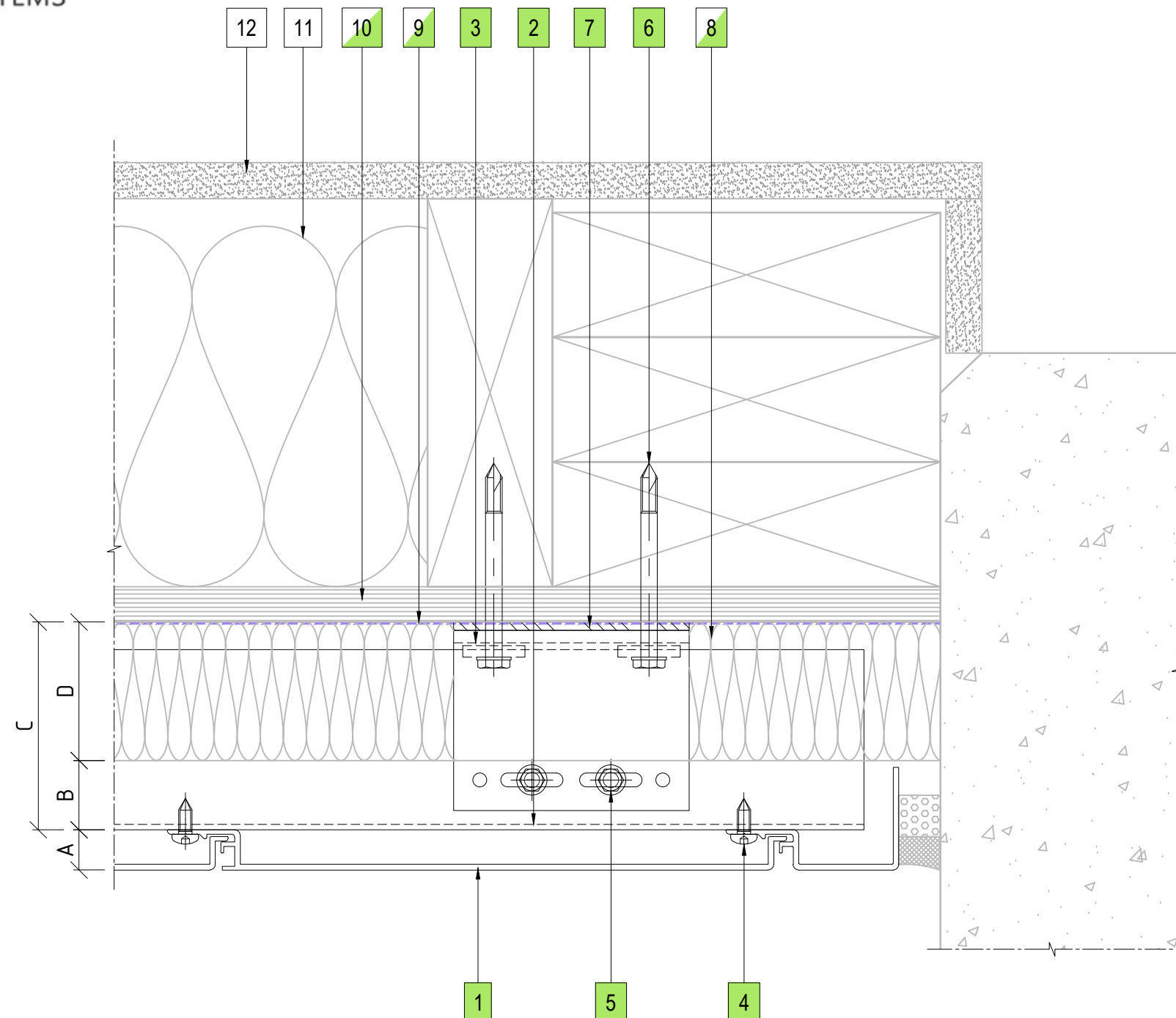
Thermosash

WOODSGlass

158 CENTRAL PARK DRIVE,
HENDERSON,
AUCKLAND 0610
NEW ZEALAND

P: +64 9 444 4944

www.thermosash.co.nz



09 CONCRETE WALL ABUTMENT DETAIL
ENCLAD™ EXTRUDED ALUMINIUM PLANKS

COPYRIGHT : THESE DESIGNS, DETAILS AND/OR SPECIFICATIONS AND THE COPYRIGHT THEREIN, REMAIN THE PROPERTY OF THERMOSASH COMMERCIAL LIMITED.

DISCLAIMER : THESE DETAILS ARE PROVIDED FOR INDICATIVE PURPOSES ONLY. CONSTRUCTION/SYSTEM DETAILS CAN VARY DEPENDING ON PROJECT SPECIFIC SPECIFICATION AND ENGINEERING REQUIREMENTS. THE DESIGNER IS RESPONSIBLE FOR ENSURING DETAILS SATISFY ALL NEW ZEALAND BUILDING CODE CLAUSES. THE DESIGNER IS RESPONSIBLE FOR ENSURING BUILDING WRAPS, FIRESTOPS AND INSULATION/SPECIFICATION COMPLY WITH MANUFACTURERS RECOMMENDATIONS AND NZBC REGULATIONS. REFER TO THERMOSASH WEBSITE FOR FULL TERMS AND CONDITIONS.

LEGEND

A	ENCLAD™ EXTRUDED ALUMINIUM PLANKS
B	20mm - 25mm NOMINAL VENTILATION ZONE (AIR GAP)
C	* 75mm SYSTEM CAVITY TO ACCOMMODATE 50mm THICK INSULATION
D	* 50mm INSULATION (OPTION BY INSITE) FIRE STOP (OPTION BY INSITE)
*	OTHER OPTIONS AVAILABLE (PROJECT SPECIFIC) 95mm SYSTEM CAVITY FOR 75mm THICK INSULATION 120mm SYSTEM CAVITY FOR 100mm THICK INSULATION

PARTS LIST

[illegible]

Cladding Type :

ENCLAD™ EXTRUDED ALUMINIUM PLANKS - VERTICALLY LAID

Support System :

ENCLAD™ EN01 - SECRET FIXED

Detail Description :

CONCRETE WALL ABUTMENT DETAIL (PLAN VIEW)

Scale @ A3 : 1:2

Rev. : NOV 2022

System # :

Detail # :

EXP-V-EN01-SF1

09

ENCLAD™ RAINSCREEN SYSTEMS

COPYRIGHT : THESE DESIGNS, DETAILS AND/OR SPECIFICATIONS AND THE COPYRIGHT THEREIN, REMAIN THE PROPERTY OF THERMOSASH COMMERCIAL LIMITED.

DISCLAIMER : THESE DETAILS ARE PROVIDED FOR INDICATIVE PURPOSES ONLY. CONSTRUCTION/SYSTEM DETAILS CAN VARY DEPENDING ON PROJECT SPECIFIC SPECIFICATION AND ENGINEERING REQUIREMENTS. THE DESIGNER IS RESPONSIBLE FOR ENSURING DETAILS SATISFY ALL NEW ZEALAND BUILDING CODE CLAUSES. THE DESIGNER IS RESPONSIBLE FOR ENSURING BUILDING WRAPS, FIRESTOPS AND INSULATION/SPECIFICATION COMPLY WITH MANUFACTURERS RECOMMENDATIONS AND NZBC REGULATIONS. REFER TO THERMOSASH WEBSITE FOR FULL TERMS AND CONDITIONS.

LEGEND

A	ENCLAD™ EXTRUDED ALUMINIUM PLANKS
B	20mm - 25mm NOMINAL VENTILATION ZONE (AIR GAP)
C	* 75mm SYSTEM CAVITY TO ACCOMMODATE 50mm THICK INSULATION
D	* 50mm INSULATION (OPTION BY INSITE) FIRE STOP (OPTION BY INSITE)
*	OTHER OPTIONS AVAILABLE (PROJECT SPECIFIC) 95mm SYSTEM CAVITY FOR 75mm THICK INSULATION 120mm SYSTEM CAVITY FOR 100mm THICK INSULATION

PARTS LIST

[illegible]

Cladding Type :

ENCLAD™ EXTRUDED ALUMINIUM PLANKS - VERTICALLY LAID

Support System :

ENCLAD™ EN01 - SECRET FIXED

Detail Description :

HORIZONTAL PANEL JOINT DETAIL(SECTION VIEW)

Scale @ A3 : 1:2

Rev. : NOV 2022

System # :

Detail # :

EXP-V-EN01-SF1

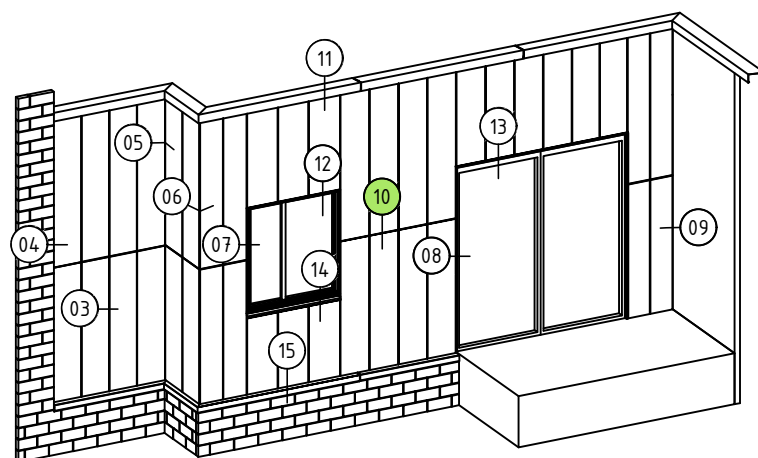
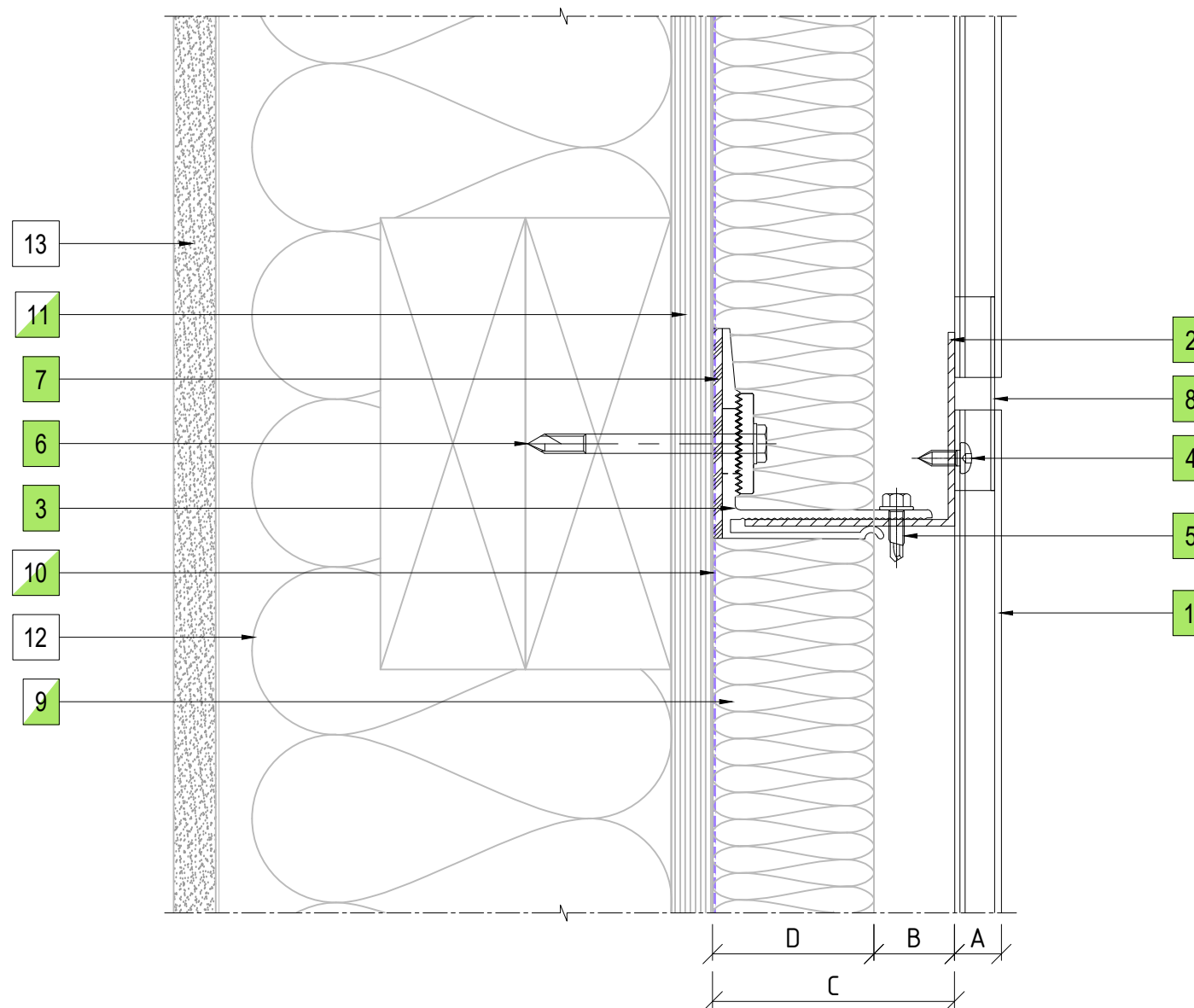
10

ENCLAD™ RAINSCREEN SYSTEMS



158 CENTRAL PARK DRIVE,
HENDERSON,
AUCKLAND 0610
NEW ZEALAND

P: +64 9 444 4944
www.thermosash.co.nz



10 HORIZONTAL PANEL JOINT DETAIL
ENCLAD™ EXTRUDED ALUMINIUM PLANKS

COPYRIGHT : THESE DESIGNS, DETAILS AND/OR SPECIFICATIONS AND THE COPYRIGHT THEREIN, REMAIN THE PROPERTY OF THERMOSASH COMMERCIAL LIMITED.

DISCLAIMER : THESE DETAILS ARE PROVIDED FOR INDICATIVE PURPOSES ONLY. CONSTRUCTION/SYSTEM DETAILS CAN VARY DEPENDING ON PROJECT SPECIFIC SPECIFICATION AND ENGINEERING REQUIREMENTS. THE DESIGNER IS RESPONSIBLE FOR ENSURING DETAILS SATISFY ALL NEW ZEALAND BUILDING CODE CLAUSES. THE DESIGNER IS RESPONSIBLE FOR ENSURING BUILDING WRAPS, FIRESTOPS AND INSULATION/SPECIFICATION COMPLY WITH MANUFACTURERS RECOMMENDATIONS AND NZBC REGULATIONS. REFER TO THERMOSASH WEBSITE FOR FULL TERMS AND CONDITIONS.

LEGEND

A	ENCLAD™ EXTRUDED ALUMINIUM PLANKS
B	20mm - 25mm NOMINAL VENTILATION ZONE (AIR GAP)
C	* 75mm SYSTEM CAVITY TO ACCOMMODATE 50mm THICK INSULATION
D	* 50mm INSULATION (OPTION BY INSITE) FIRE STOP (OPTION BY INSITE)
*	OTHER OPTIONS AVAILABLE (PROJECT SPECIFIC) 95mm SYSTEM CAVITY FOR 75mm THICK INSULATION 120mm SYSTEM CAVITY FOR 100mm THICK INSULATION

PARTS LIST

[illegible]

Cladding Type :

ENCLAD™ EXTRUDED ALUMINIUM PLANKS - VERTICALLY LAID

Support System :

ENCLAD™ EN01 - SECRET FIXED

Detail Description :

PARAPET FLASHING DETAIL (SECTION VIEW)

Scale @ A3 : 1:2

Rev. : NOV 2022

System # :

Detail # :

EXP-V-EN01-SF1

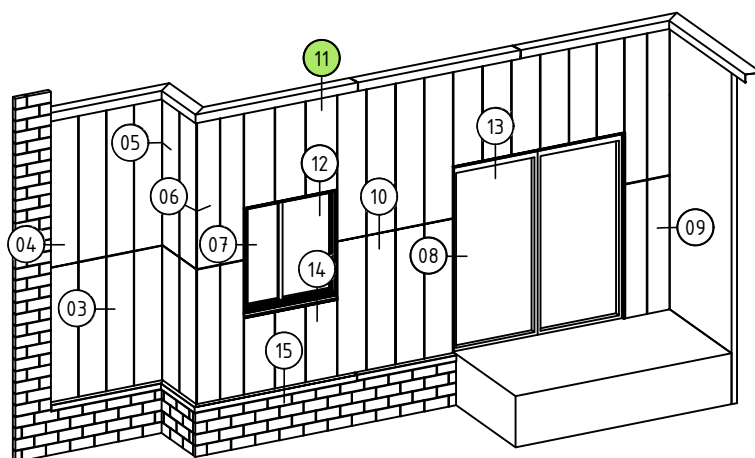
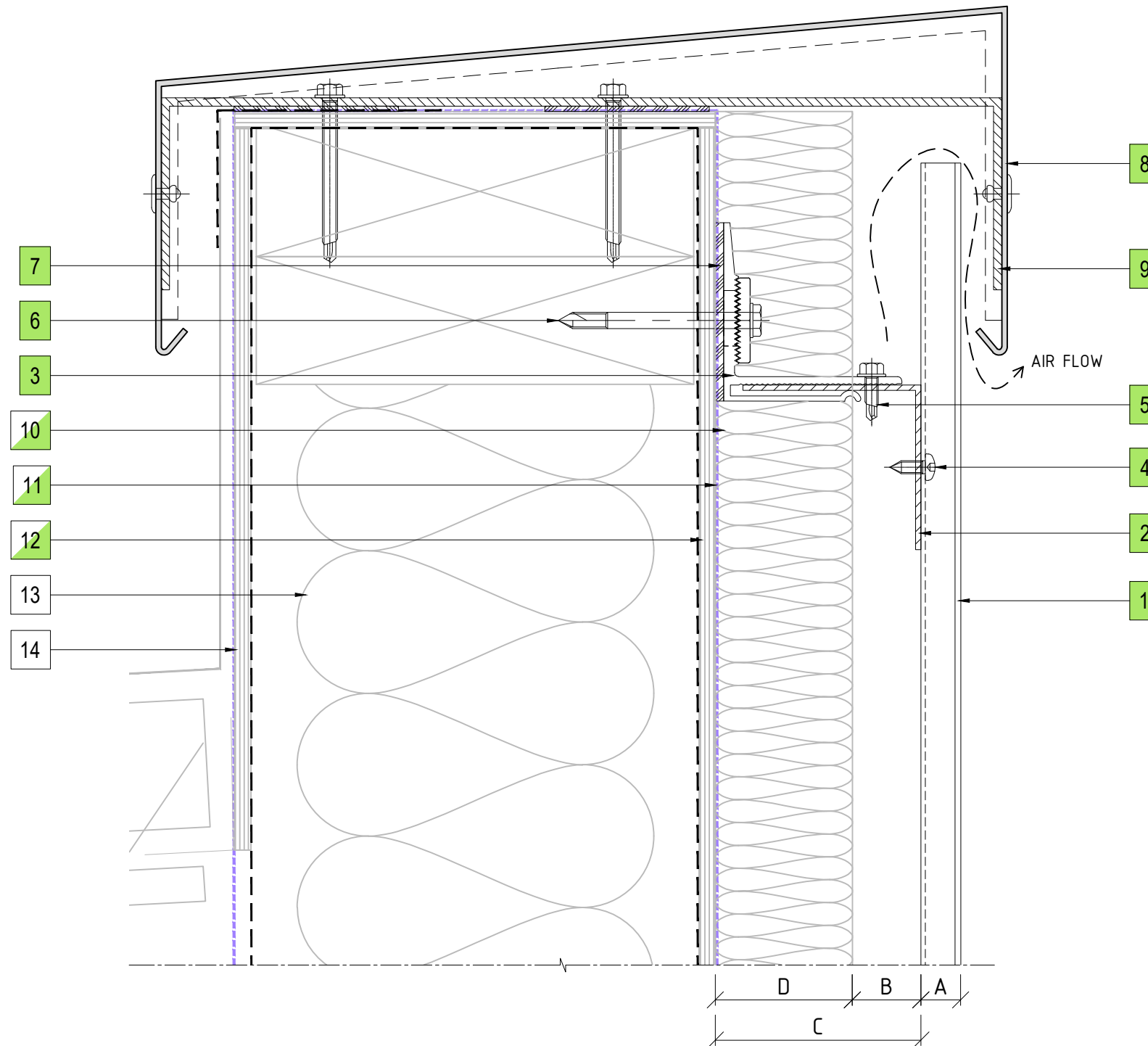
11

ENCLAD™ RAINSCREEN SYSTEMS



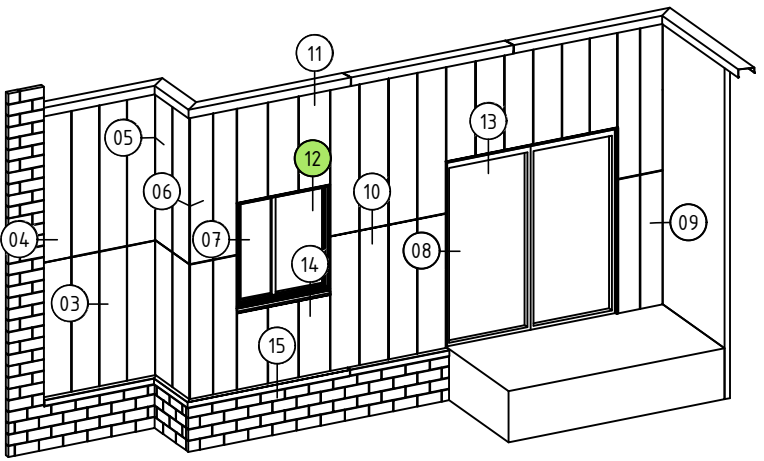
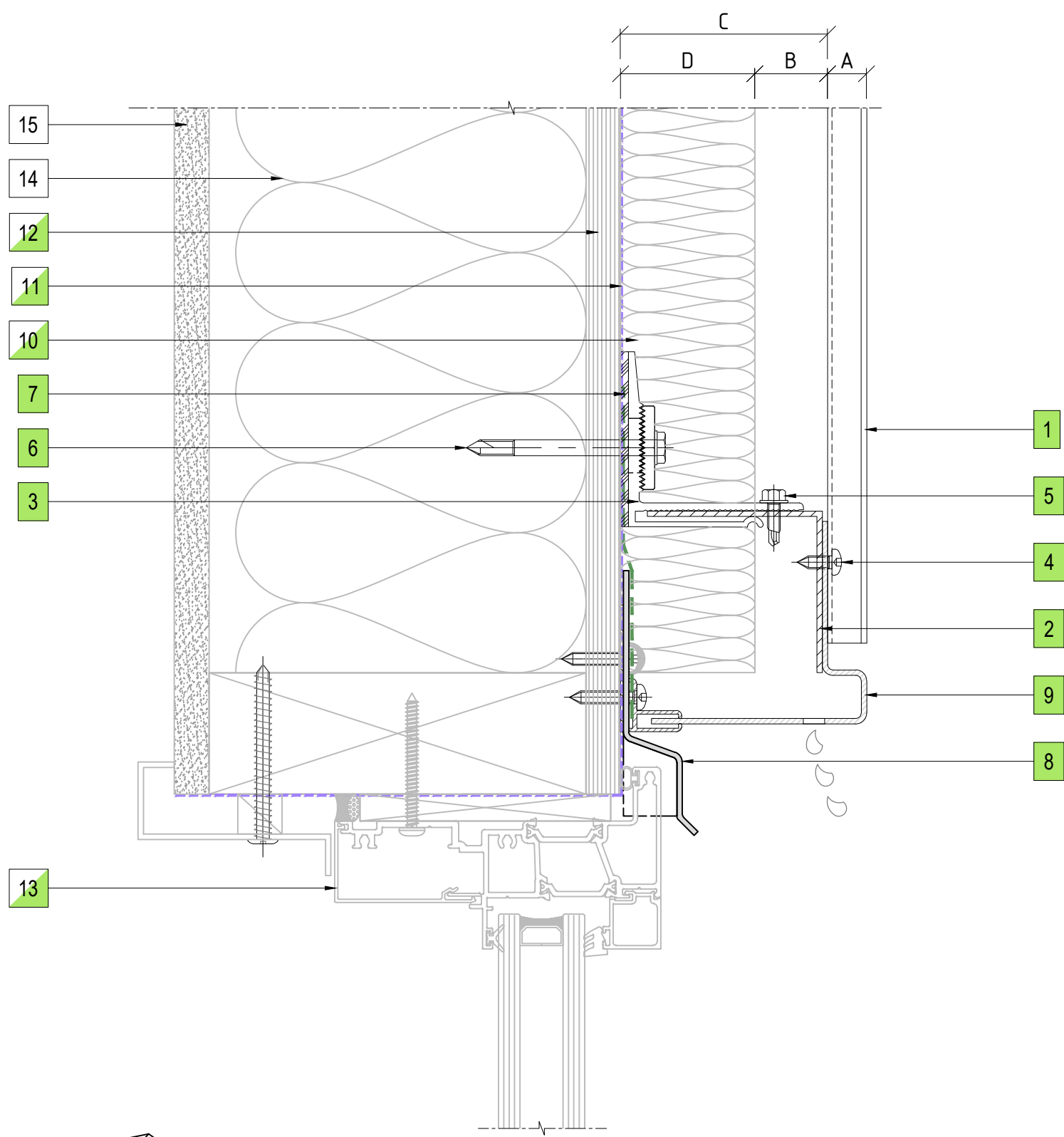
158 CENTRAL PARK DRIVE,
HENDERSON,
AUCKLAND 0610
NEW ZEALAND

P: +64 9 444 4944
www.thermosash.co.nz





11 PARAPET FLASHING DETAIL

ENCLAD™ EXTRUDED ALUMINIUM PLANKS



12 WINDOW HEAD DETAIL
ENCLAD™ EXTRUDED ALUMINIUM PLANKS

PART OF THE THERMOSASH GROUP COMPANIES :



COPYRIGHT : THESE DESIGNS, DETAILS AND/OR SPECIFICATIONS AND THE COPYRIGHT THEREIN, REMAIN THE PROPERTY OF THERMOSASH COMMERCIAL LIMITED.

DISCLAIMER : THESE DETAILS ARE PROVIDED FOR INDICATIVE PURPOSES ONLY. CONSTRUCTION/SYSTEM DETAILS CAN VARY DEPENDING ON PROJECT SPECIFIC SPECIFICATION AND ENGINEERING REQUIREMENTS. THE DESIGNER IS RESPONSIBLE FOR ENSURING DETAILS SATISFY ALL NEW ZEALAND BUILDING CODE CLAUSES. THE DESIGNER IS RESPONSIBLE FOR ENSURING BUILDING WRAPS, FIRESTOPS AND INSULATION/SPECIFICATION COMPLY WITH MANUFACTURERS RECOMMENDATIONS AND NZBC REGULATIONS. REFER TO THERMOSASH WEBSITE FOR FULL TERMS AND CONDITIONS.

LEGEND	
A	ENCLAD™ EXTRUDED ALUMINIUM PLANKS
B	20mm - 25mm NOMINAL VENTILATION ZONE (AIR GAP)
C	* 75mm SYSTEM CAVITY TO ACCOMMODATE 50mm THICK INSULATION
D	* 50mm INSULATION (OPTION BY INSITE) FIRE STOP (OPTION BY INSITE)
*	OTHER OPTIONS AVAILABLE (PROJECT SPECIFIC) 95mm SYSTEM CAVITY FOR 75mm THICK INSULATION 120mm SYSTEM CAVITY FOR 100mm THICK INSULATION

PARTS LIST	
1	ENCLAD™ EXTRUDED ALUMINIUM PLANKS
2	ENCLAD EN01 ALUMINIUM SUPPORT PROFILE
3	ENCLAD EN01 ALUMINIUM HELPING HAND BRACKET
4	ENCLAD PANEL FIXING (STAINLESS STEEL)
5	ENCLAD BRACKET TO RAIL FIXING (STAINLESS STEEL)
6	ENCLAD HOST STRUCTURAL FIXING (STAINLESS STEEL)
7	ENCLAD THERMAL ISOLATION PAD
8	ENCLAD ALUMINIUM FLASHING
9	ENCLAD ALUMINIUM CLOSURE
10	CAVITY INSULATION (OPTION BY INSITE)
11	BUILDING WRAP / MEMBRANE (OPTION BY INSITE)
12	RIGID AIR BARRIER / SHEATHING BOARD (OPTION BY INSITE)
13	ALUMINIUM DOORS, WINDOWS & REVEALS (OPTION BY INSITE)
14	WALL INSULATION (BY OTHERS)
15	PLASTER BOARD (BY OTHERS)

Cladding Type :

ENCLAD™ EXTRUDED ALUMINIUM PLANKS - VERTICALLY LAID

Support System :


ENCLAD™ EN01 - SECRET FIXED

Detail Description :

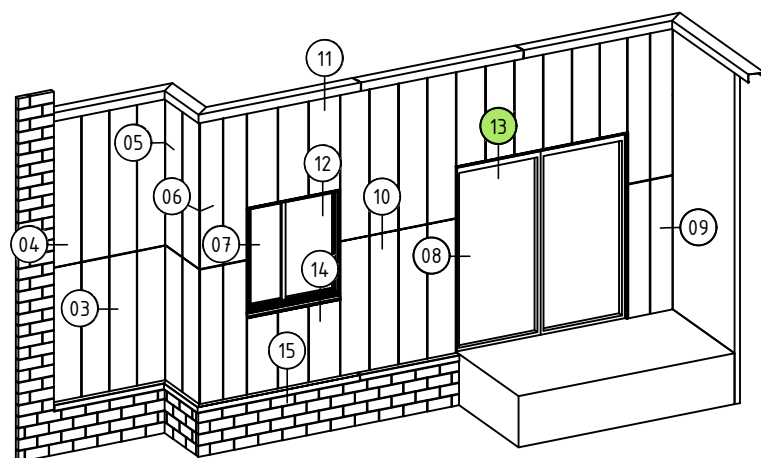
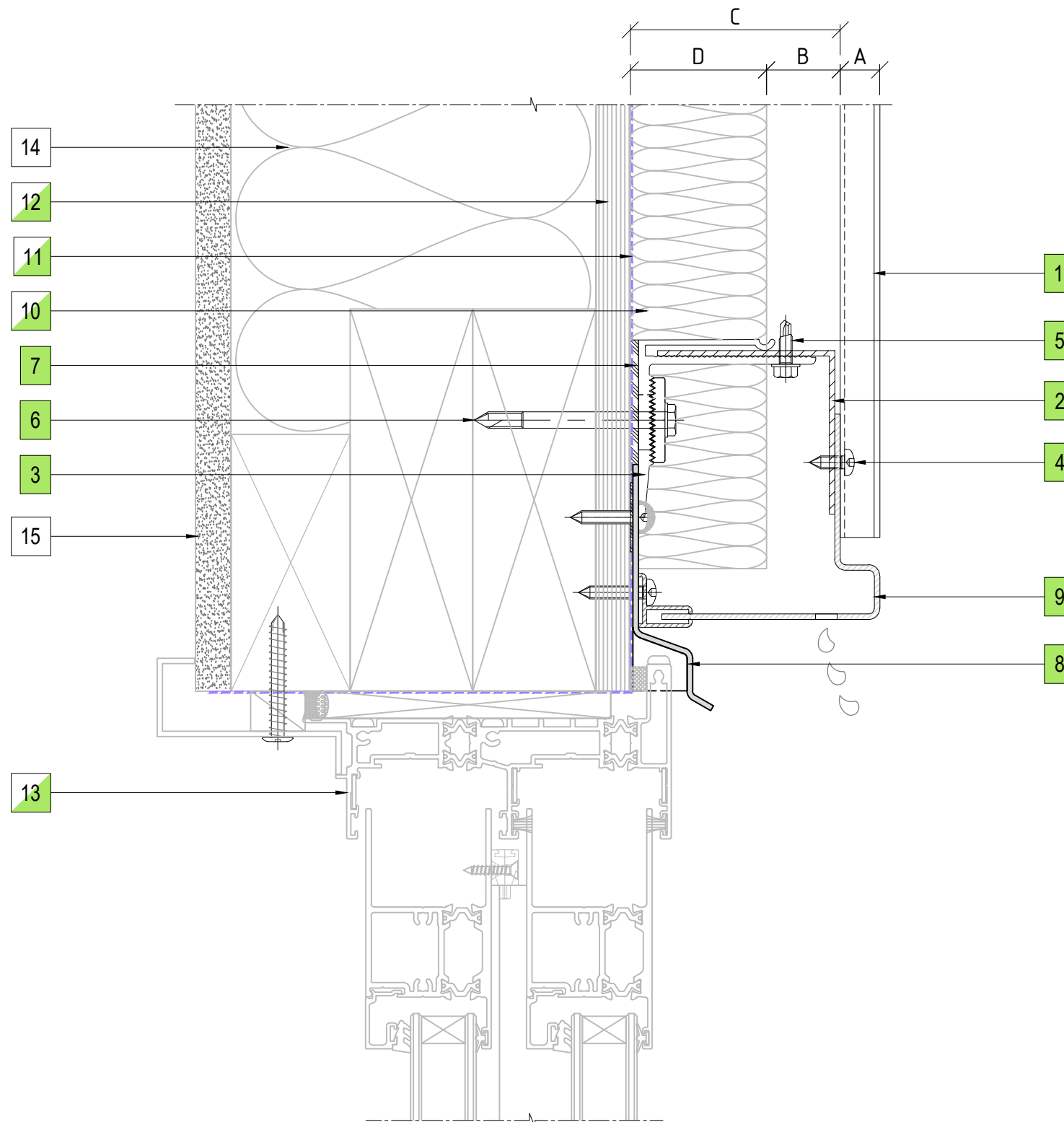
WINDOW HEAD DETAIL (SECTION VIEW)

Scale @ A3 : 1:2	Rev. : NOV 2022
System # : EXP-V-EN01-SF1	Detail # : 12

ENCLAD™ RAINSCREEN SYSTEMS



158 CENTRAL PARK DRIVE,
HENDERSON,
AUCKLAND 0610
NEW ZEALAND
P: +64 9 444 4944
www.thermosash.co.nz



13 DOOR HEAD DEATIL
ENCLAD™ EXTRUDED ALUMINIUM PLANKS

COPYRIGHT : THESE DESIGNS, DETAILS AND/OR SPECIFICATIONS AND THE COPYRIGHT THEREIN, REMAIN THE PROPERTY OF THERMOSASH COMMERCIAL LIMITED.

DISCLAIMER: THESE DETAILS ARE PROVIDED FOR INDICATIVE PURPOSES ONLY. CONSTRUCTION/SYSTEM DETAILS CAN VARY DEPENDING ON PROJECT SPECIFIC SPECIFICATION AND ENGINEERING REQUIREMENTS. THE DESIGNER IS RESPONSIBLE FOR ENSURING DETAILS SATISFY ALL NEW ZEALAND BUILDING CODE CLAUSES. THE DESIGNER IS RESPONSIBLE FOR ENSURING BUILDING WRAPS, FIRESTOPS AND INSULATION/SPECIFICATION COMPLY WITH MANUFACTURERS RECOMMENDATIONS AND NZBC REGULATIONS. REFER TO THERMOSHASH WEBSITE FOR FULL TERMS AND CONDITIONS.

LEGEND

A	ENCLAD™ EXTRUDED ALUMINIUM PLANKS
B	20mm - 25mm NOMINAL VENTILATION ZONE (AIR GAP)
C	* 75mm SYSTEM CAVITY TO ACCOMMODATE 50mm THICK INSULATION
D	* 50mm INSULATION (OPTION BY INSITE) FIRE STOP (OPTION BY INSITE)
*	OTHER OPTIONS AVAILABLE (PROJECT SPECIFIC) 95mm SYSTEM CAVITY FOR 75mm THICK INSULATION 120mm SYSTEM CAVITY FOR 100mm THICK INSULATION

PARTS LIST

[illegible]

Cladding Type :

ENCLAD™ EXTRUDED ALUMINIUM PLANKS - VERTICALLY LAID

Support System :

ENCLAD™ EN01 - SECRET FIXED

Detail Description :

DOOR HEAD DETAIL (SECTION VIEW)

Scale @ A3 : 1:2

Rev. : NOV 2022

System # :

Detail # :	
------------	--

EXP-V-EN01-SF1

13

ENCLAD™ RAINSCREEN SYSTEMS

COPYRIGHT : THESE DESIGNS, DETAILS AND/OR SPECIFICATIONS AND THE COPYRIGHT THEREIN, REMAIN THE PROPERTY OF THERMOSASH COMMERCIAL LIMITED.

DISCLAIMER : THESE DETAILS ARE PROVIDED FOR INDICATIVE PURPOSES ONLY. CONSTRUCTION/SYSTEM DETAILS CAN VARY DEPENDING ON PROJECT SPECIFIC SPECIFICATION AND ENGINEERING REQUIREMENTS. THE DESIGNER IS RESPONSIBLE FOR ENSURING DETAILS SATISFY ALL NEW ZEALAND BUILDING CODE CLAUSES. THE DESIGNER IS RESPONSIBLE FOR ENSURING BUILDING WRAPS, FIRESTOPS AND INSULATION/SPECIFICATION COMPLY WITH MANUFACTURERS RECOMMENDATIONS AND NZBC REGULATIONS. REFER TO THERMOFASHER WEBSITE FOR FULL TERMS AND CONDITIONS.

LEGEND

A	ENCLAD™ EXTRUDED ALUMINIUM PLANKS
B	20mm - 25mm NOMINAL VENTILATION ZONE (AIR GAP)
C	* 75mm SYSTEM CAVITY TO ACCOMMODATE 50mm THICK INSULATION
D	* 50mm INSULATION (OPTION BY INSITE) FIRE STOP (OPTION BY INSITE)
*	OTHER OPTIONS AVAILABLE (PROJECT SPECIFIC) 95mm SYSTEM CAVITY FOR 75mm THICK INSULATION 120mm SYSTEM CAVITY FOR 100mm THICK INSULATION

PARTS LIST

[illegible]

Cladding Type :

ENCLAD™ EXTRUDED ALUMINIUM PLANKS - VERTICALLY LAID

Support System :

ENCLAD™ EN01 - SECRET FIXED

Detail Description :

Detail Description:
WINDOW SILL DETAIL (SECTION VIEW)

Scale @ A3 : 1:2

Rev. : NOV 2022

System # :

Detail # :	
------------	--

EXP-V-EN01-SF1

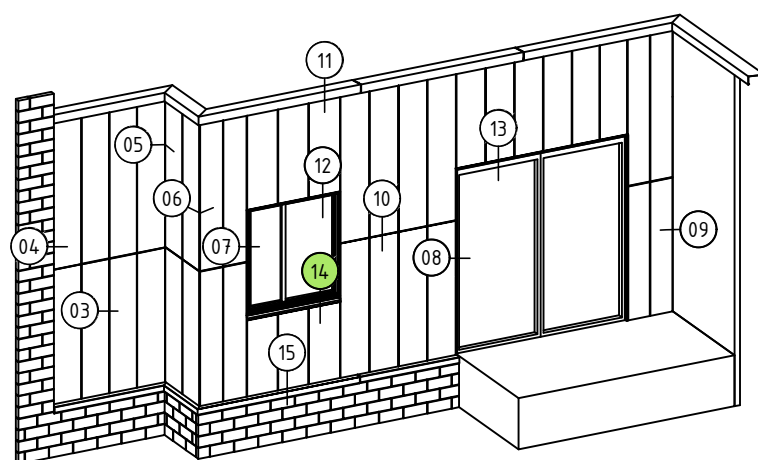
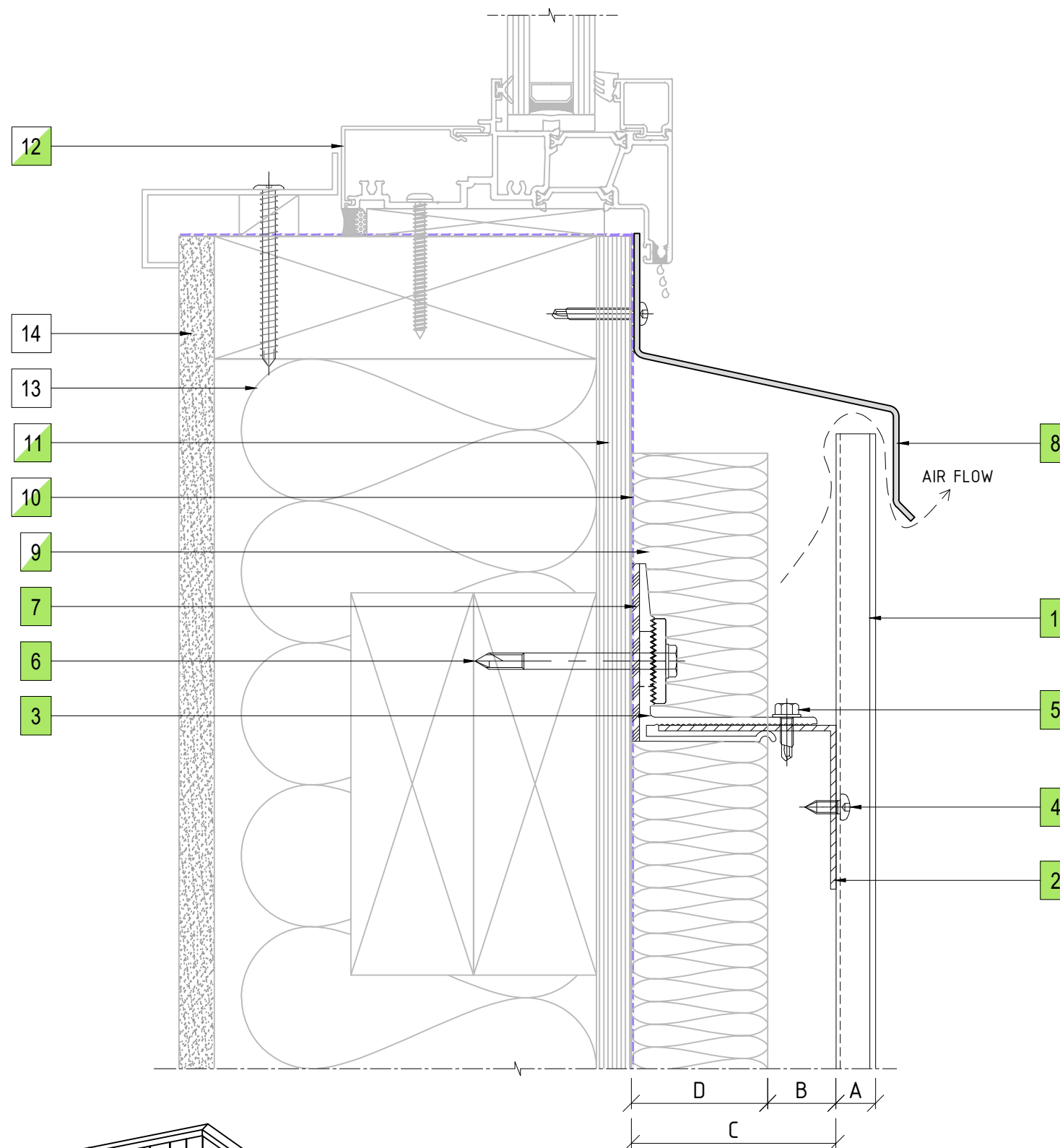
14

ENCLAD™ RAINSCREEN SYSTEMS



158 CENTRAL PARK DRIVE,
HENDERSON,
AUCKLAND 0610
NEW ZEALAND

P: +64 9 444 4944
www.thermosash.co.nz



14 WINDOW SILL DETAIL
ENCLAD™ EXTRUDED ALUMINIUM PLANKS

COPYRIGHT : THESE DESIGNS, DETAILS AND/OR SPECIFICATIONS AND THE COPYRIGHT THEREIN, REMAIN THE PROPERTY OF THERMOSASH COMMERCIAL LIMITED.

DISCLAIMER : THESE DETAILS ARE PROVIDED FOR INDICATIVE PURPOSES ONLY. CONSTRUCTION/SYSTEM DETAILS CAN VARY DEPENDING ON PROJECT SPECIFIC SPECIFICATION AND ENGINEERING REQUIREMENTS. THE DESIGNER IS RESPONSIBLE FOR ENSURING DETAILS SATISFY ALL NEW ZEALAND BUILDING CODE CLAUSES. THE DESIGNER IS RESPONSIBLE FOR ENSURING BUILDING WRAPS, FIRESTOPS AND INSULATION/SPECIFICATION COMPLY WITH MANUFACTURERS RECOMMENDATIONS AND NZBC REGULATIONS. REFER TO THERMOSASH WEBSITE FOR FULL TERMS AND CONDITIONS.

LEGEND

A	ENCLAD™ EXTRUDED ALUMINIUM PLANKS
B	20mm - 25mm NOMINAL VENTILATION ZONE (AIR GAP)
C	* 75mm SYSTEM CAVITY TO ACCOMMODATE 50mm THICK INSULATION
D	* 50mm INSULATION (OPTION BY INSITE) FIRE STOP (OPTION BY INSITE)
*	OTHER OPTIONS AVAILABLE (PROJECT SPECIFIC) 95mm SYSTEM CAVITY FOR 75mm THICK INSULATION 120mm SYSTEM CAVITY FOR 100mm THICK INSULATION

PARTS LIST

[illegible]

Cladding Type :

ENCLAD™ EXTRUDED ALUMINIUM PLANKS - VERTICALLY LAID

Support System :

ENCLAD™ EN01 - SECRET FIXED

Detail Description :

BRICKWALL AT BASE DRIP DETAIL (SECTION VIEW)

Scale @ A3 : 1:2

Rev. : NOV 2022

System # :

Detail # :

EXP-V-EN01-SF1

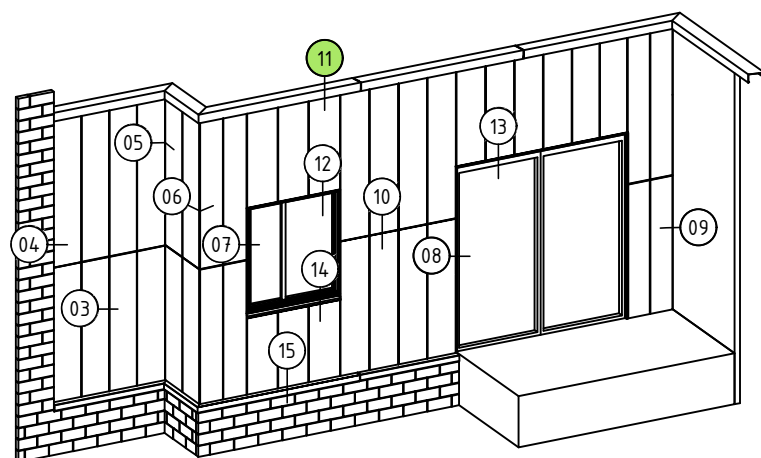
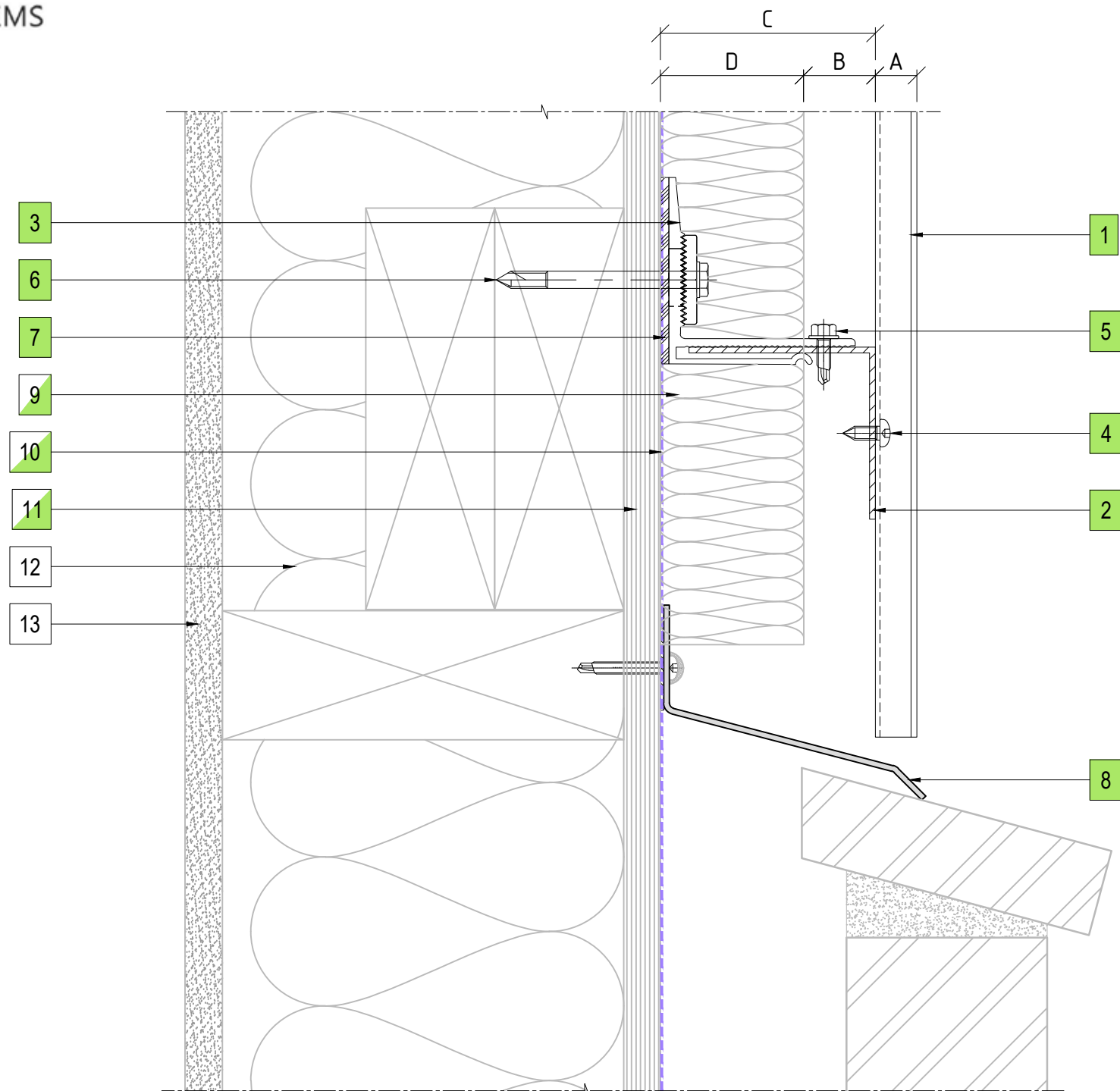
15

ENCLAD™ RAINSCREEN SYSTEMS

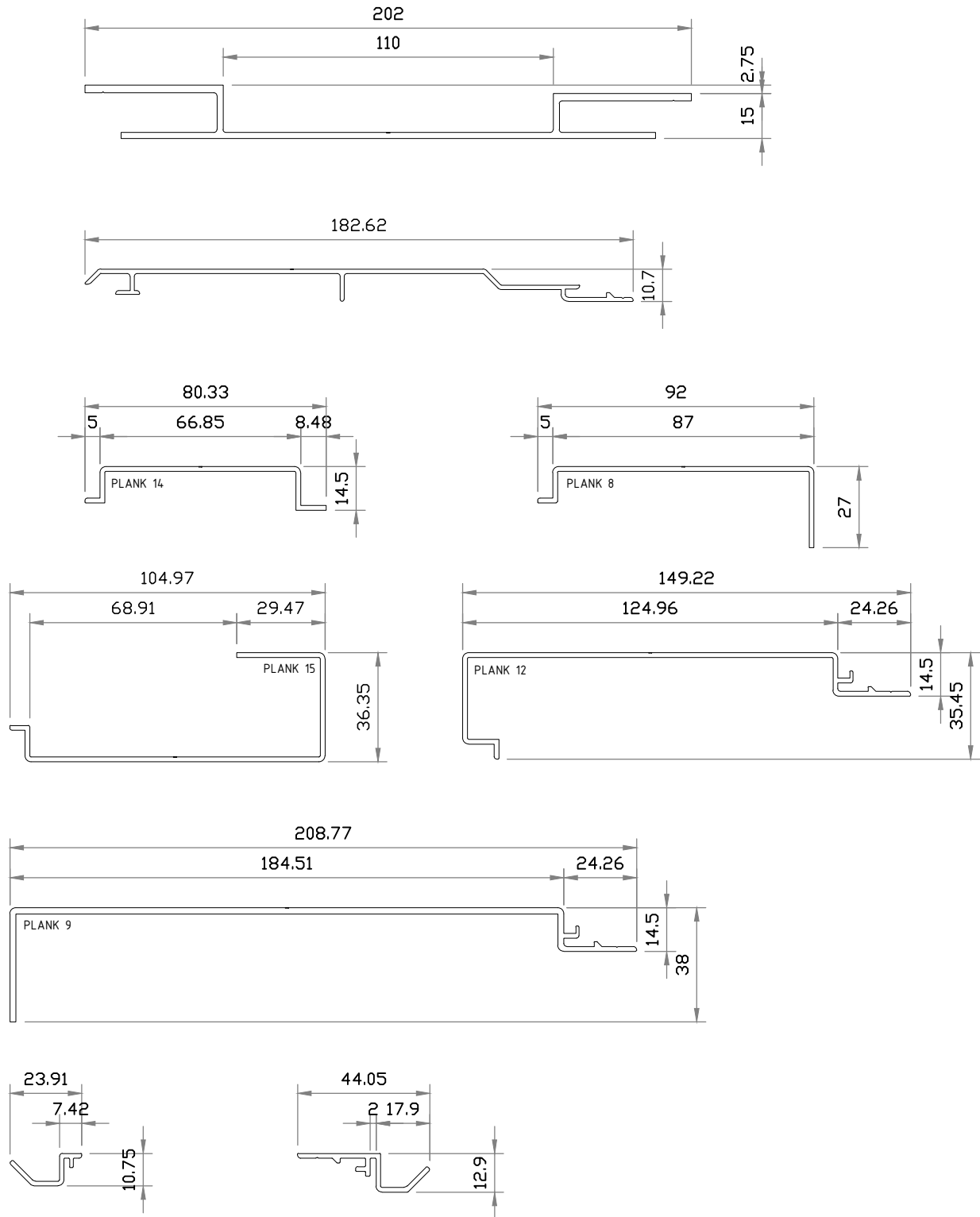
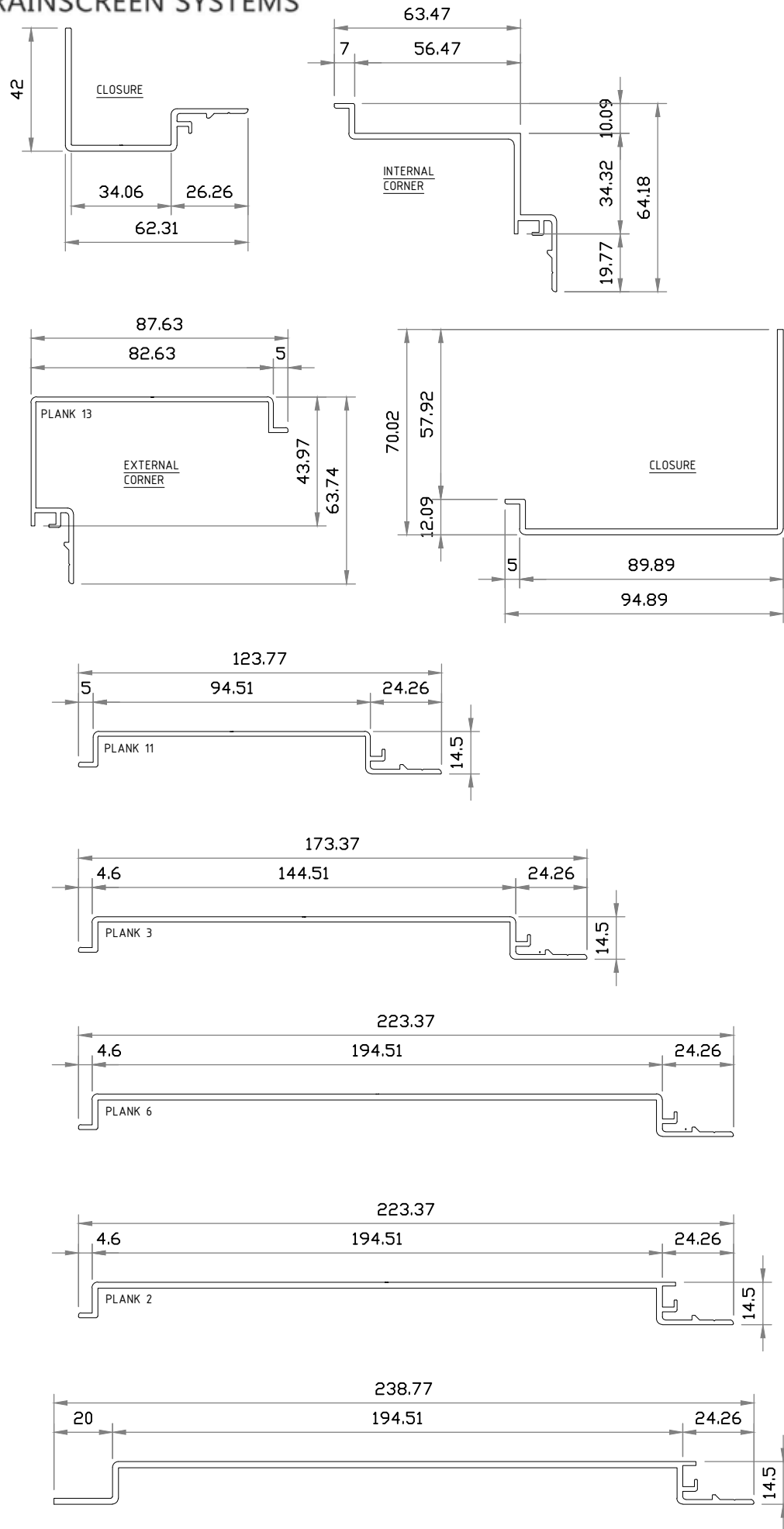


158 CENTRAL PARK DRIVE,
HENDERSON,
AUCKLAND 0610
NEW ZEALAND

P: +64 9 444 4944
www.thermosash.co.nz



15 BRICKWALL AT BASE DRIP DETAIL
ENCLAD™ EXTRUDED ALUMINIUM PLANKS



16 PLANK RANGE
ENCLAD™ EXTRUDED ALUMINIUM PLANKS

PART OF THE THERMOSASH GROUP COMPANIES :



COPYRIGHT : THESE DESIGNS, DETAILS AND/OR SPECIFICATIONS AND THE COPYRIGHT THEREIN, REMAIN THE PROPERTY OF THERMOSASH COMMERCIAL LIMITED.

DISCLAIMER : THESE DETAILS ARE PROVIDED FOR INDICATIVE PURPOSES ONLY. CONSTRUCTION/SYSTEM DETAILS CAN VARY DEPENDING ON PROJECT SPECIFIC SPECIFICATION AND ENGINEERING REQUIREMENTS. THE DESIGNER IS RESPONSIBLE FOR ENSURING DETAILS SATISFY ALL NEW ZEALAND BUILDING CODE CLAUSES. THE DESIGNER IS RESPONSIBLE FOR ENSURING BUILDING WRAPS, FIRESTOPS AND INSULATION/SPECIFICATION COMPLY WITH MANUFACTURERS RECOMMENDATIONS AND NZBC REGULATIONS. REFER TO THERMOSASH WEBSITE FOR FULL TERMS AND CONDITIONS.

Cladding Type :
ENCLAD™ EXTRUDED ALUMINIUM PLANKS - VERTICALLY LAID

Support System :
ENCLAD™ EN01 - SECRET FIXED

Detail Description :
PLANK RANGE

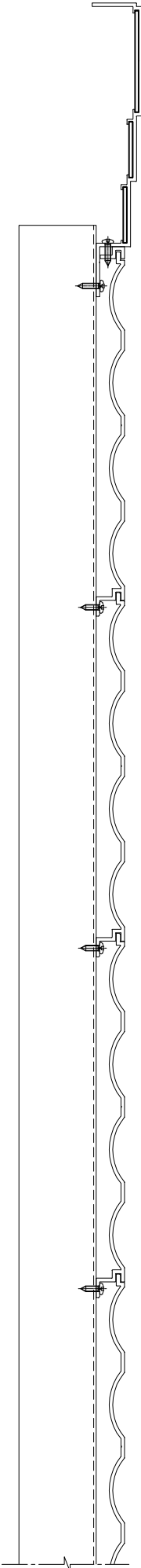
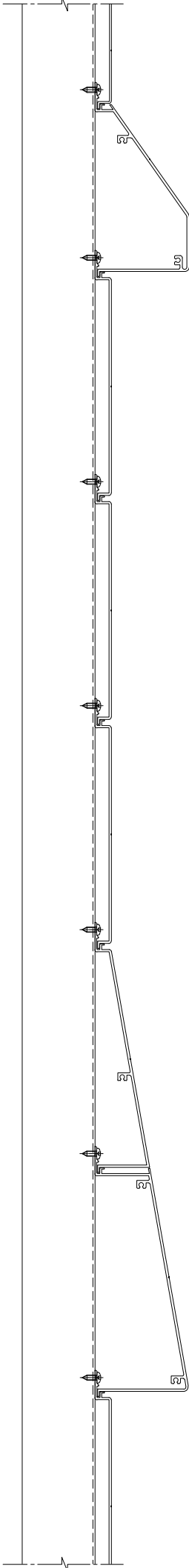
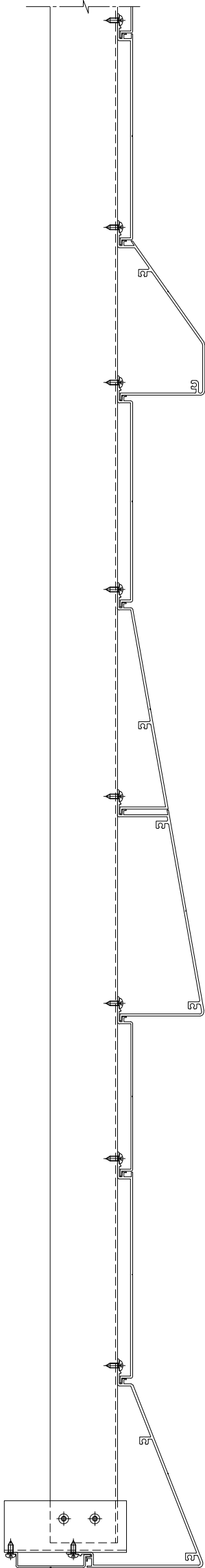
Scale @ A3 : 1:2	Rev. : NOV 2022
System # : EXP-V-EN01-SF1	Detail # : 16



158 CENTRAL PARK DRIVE,
HENDERSON,
AUCKLAND 0610
NEW ZEALAND
P: +64 9 444 4944
www.thermosash.co.nz

COPYRIGHT : THESE DESIGNS, DETAILS AND/OR SPECIFICATIONS AND THE COPYRIGHT THEREIN, REMAIN THE PROPERTY OF THERMOSASH COMMERCIAL LIMITED.

DISCLAIMER : THESE DETAILS ARE PROVIDED FOR INDICATIVE PURPOSES ONLY. CONSTRUCTION/SYSTEM DETAILS CAN VARY DEPENDING ON PROJECT SPECIFIC SPECIFICATION AND ENGINEERING REQUIREMENTS. THE DESIGNER IS RESPONSIBLE FOR ENSURING THAT THE SYSTEMS AND DETAILS SHOWN HEREIN COMPLY WITH ALL APPLICABLE BUILDING CODES, BUILDING WRAPS, FIRESTOPS AND INSULATION SPECIFICATION COMPLY WITH MANUFACTURERS RECOMMENDATIONS AND NZBC REGULATIONS. REFER TO THERMOSASH WEBSITE FOR FULL TERMS AND CONDITIONS.



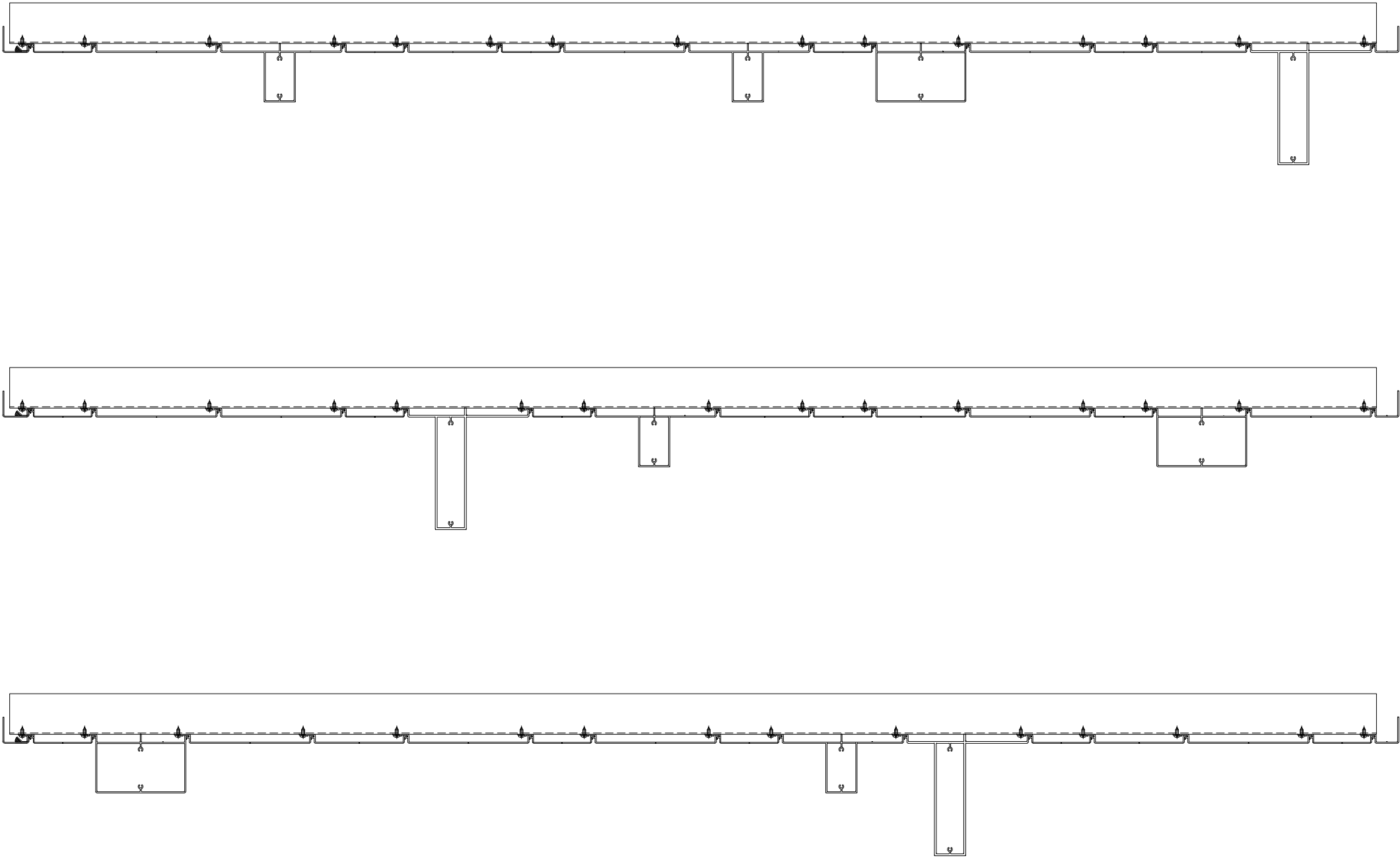
Cladding Type :
ENCLAD™ EXTRUDED ALUMINIUM PLANKS - VERTICALLY LAID

Support System :
ENCLAD™ EN01 - SECRET FIXED

Detail Description :
PLANK SETOUT

Scale @ A3 :	1:5	Rev. :	DEC 2022
System # :	EXP-V-EN01-SF1	Detail # :	17

ENCLAD™ RAINSCREEN SYSTEMS



18 PLANK SETOUT
ENCLAD™ EXTRUDED ALUMINIUM PLANKS

Cladding Type :

ENCLAD™ EXTRUDED ALUMINIUM PLANKS - VERTICALLY LAID

Support System :

ENCLAD™ EN01 - SECRET FIXED

Detail Description :

PLANK SETOUT

Scale @ A3 : 1:8	Rev. : DEC 2022
System # : EXP-V-EN01-SF1	Detail # : 18

ENCLAD™ RAINSCREEN SYSTEMS

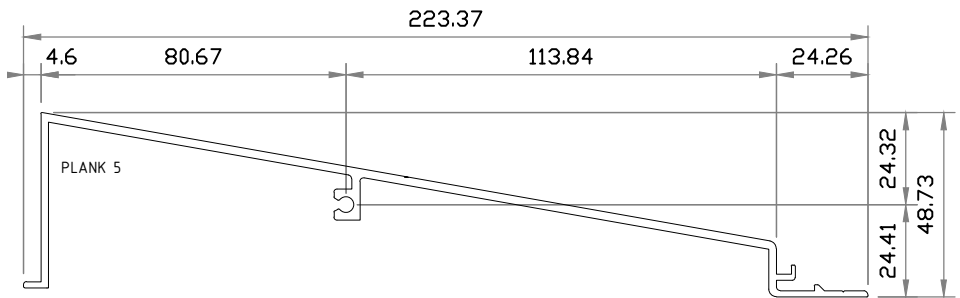
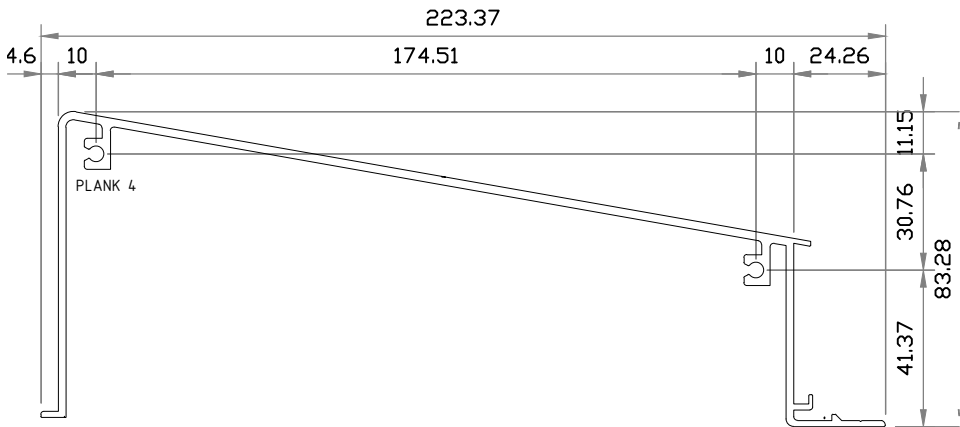
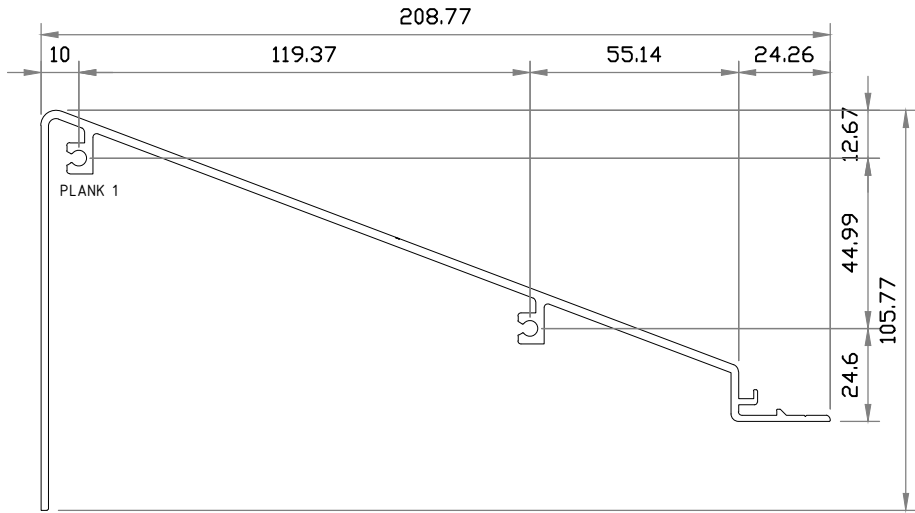
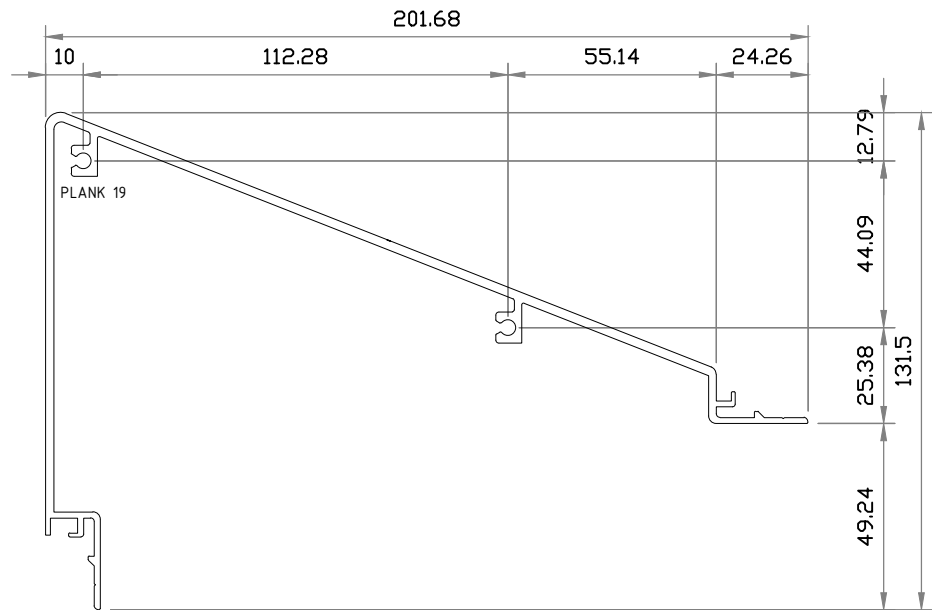
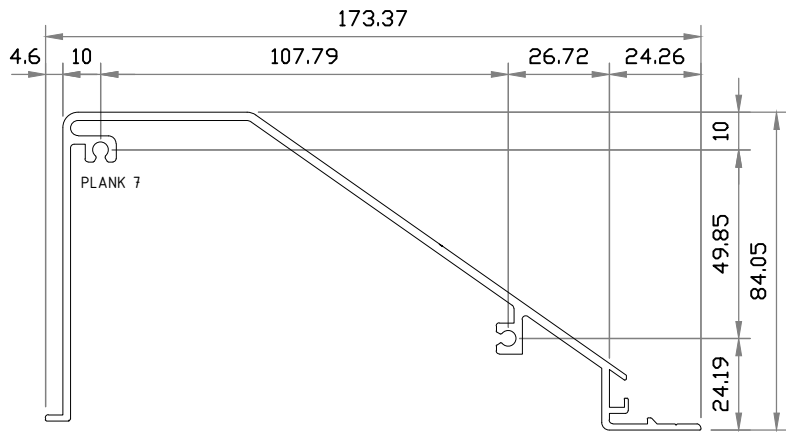
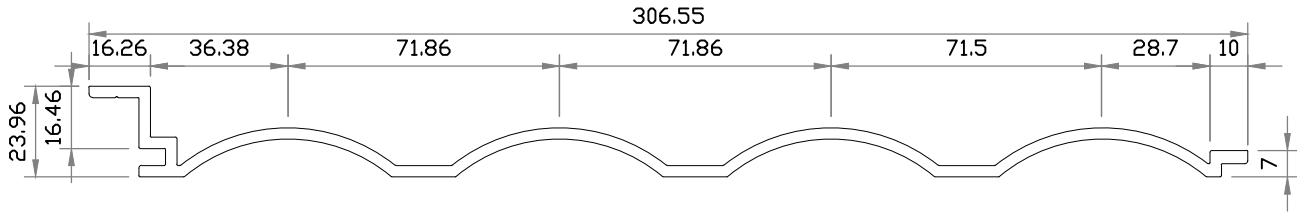
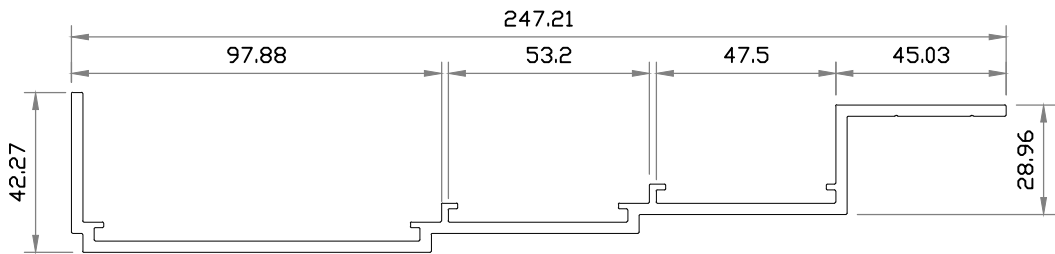
Thermosash

WOODSGlass

158 CENTRAL PARK DRIVE,
HENDERSON,
AUCKLAND 0610
NEW ZEALAND

P: +64 9 444 4944

www.thermosash.co.nz



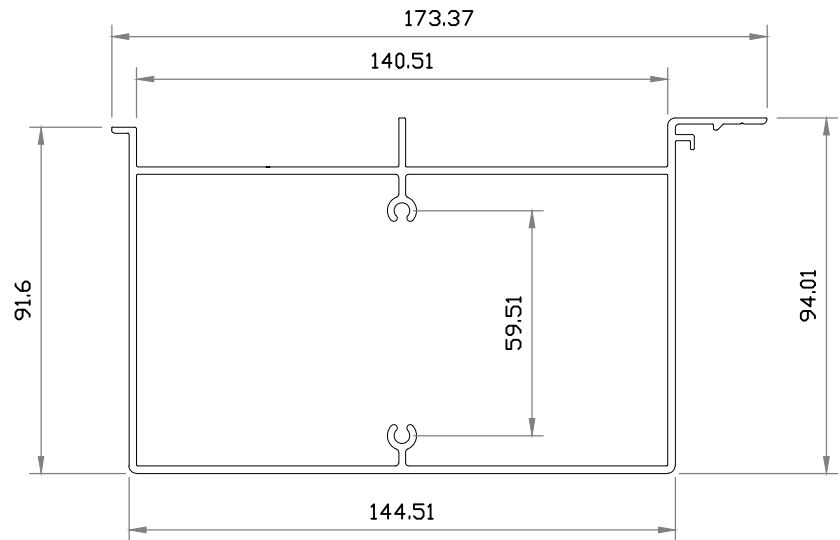
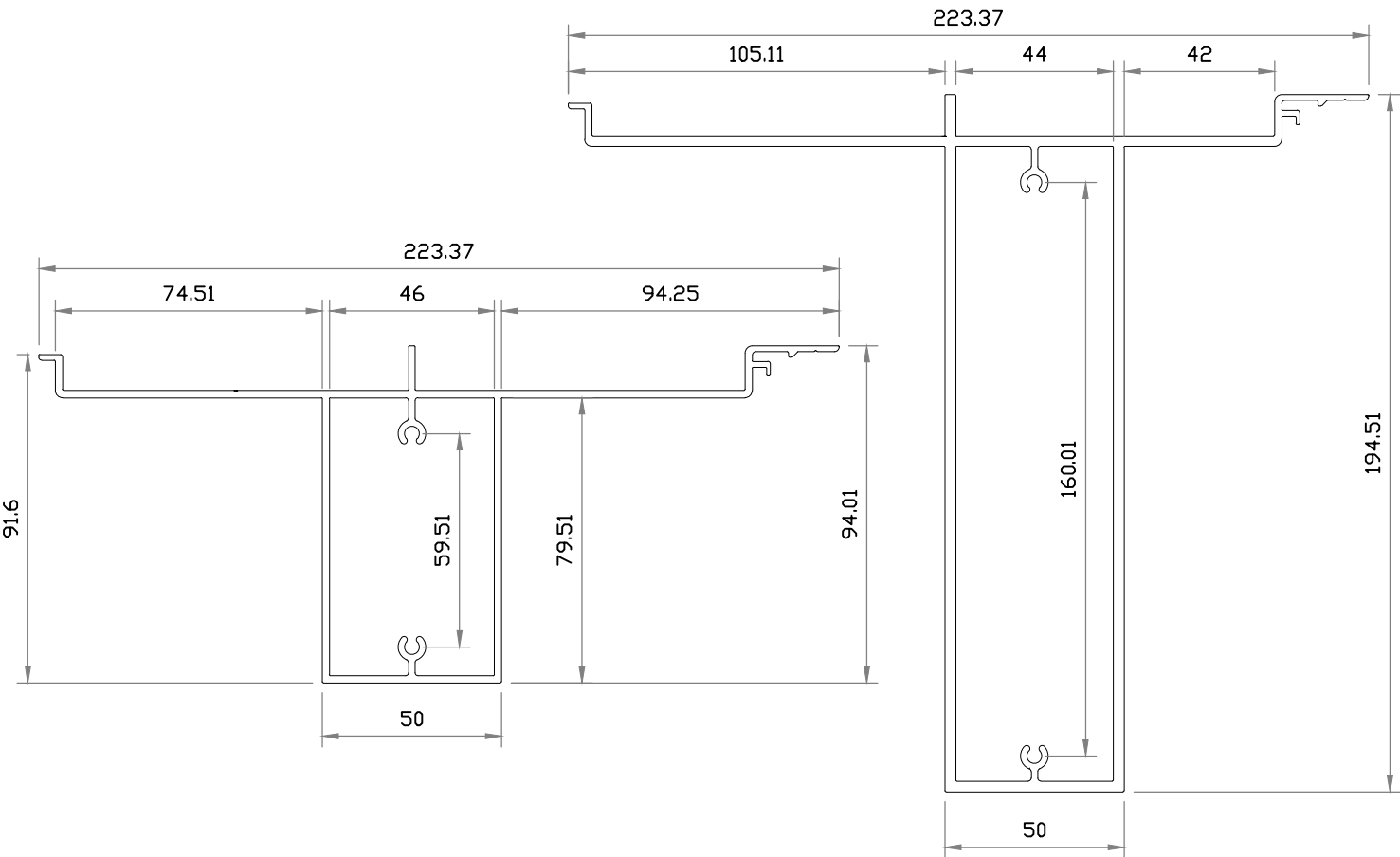
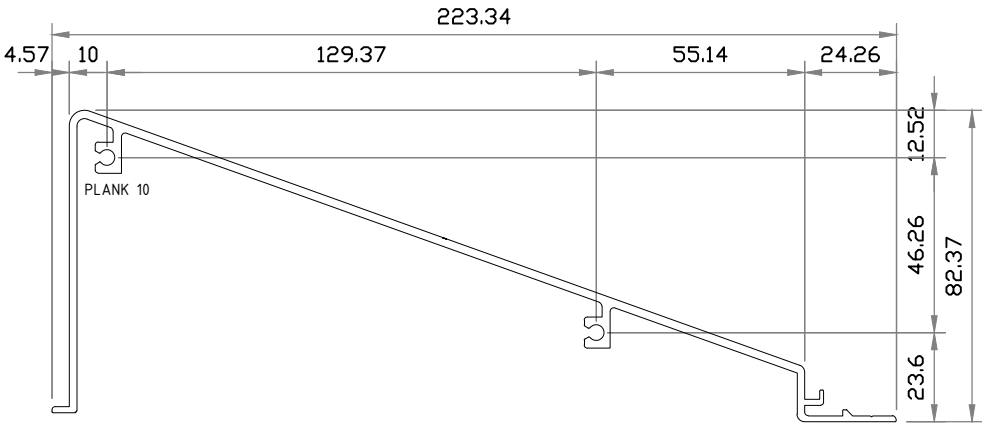
19 PLANK RANGE
ENCLAD™ EXTRUDED ALUMINIUM PLANKS

Cladding Type :
ENCLAD™ EXTRUDED ALUMINIUM PLANKS - VERTICALLY LAID

Support System :
ENCLAD™ EN01 - SECRET FIXED

Detail Description :
PLANK RANGE

Scale @ A3 : 1:2	Rev. : DEC 2022
System # : EXP-V-EN01-SF1	Detail # : 19



20 PLANK RANGE
ENCLADTM EXTRUDED ALUMINIUM PLANKS

PART OF THE THERMOSASH GROUP COMPANIES :



COPYRIGHT : THESE DESIGNS, DETAILS AND/OR SPECIFICATIONS AND THE COPYRIGHT THEREIN, REMAIN THE PROPERTY OF THERMOSASH COMMERCIAL LIMITED.

DISCLAIMER : THESE DETAILS ARE PROVIDED FOR INDICATIVE PURPOSES ONLY. CONSTRUCTION/SYSTEM DETAILS CAN VARY DEPENDING ON PROJECT SPECIFIC SPECIFICATION AND ENGINEERING REQUIREMENTS. THE DESIGNER IS RESPONSIBLE FOR ENSURING DETAILS SATISFY ALL NEW ZEALAND BUILDING CODE CLAUSES. THE DESIGNER IS RESPONSIBLE FOR ENSURING BUILDING WRAPS, FIRESTOPS AND INSULATION/SPECIFICATION COMPLY WITH MANUFACTURERS RECOMMENDATIONS AND NZBC REGULATIONS. REFER TO THERMOSASH WEBSITE FOR FULL TERMS AND CONDITIONS.

Cladding Type :
ENCLADTM EXTRUDED ALUMINIUM PLANKS - VERTICALLY LAID

Support System :
ENCLADTM EN01 - SECRET FIXED

Detail Description :
PLANK RANGE

Scale @ A3 : 1:2	Rev. : DEC 2022
System # : EXP-V-EN01-SF1	Detail # : 20

ENCLADTM RAINSCREEN SYSTEMS



158 CENTRAL PARK DRIVE,
HENDERSON,
AUCKLAND 0610
NEW ZEALAND
P: +64 9 444 4944
www.thermosash.co.nz