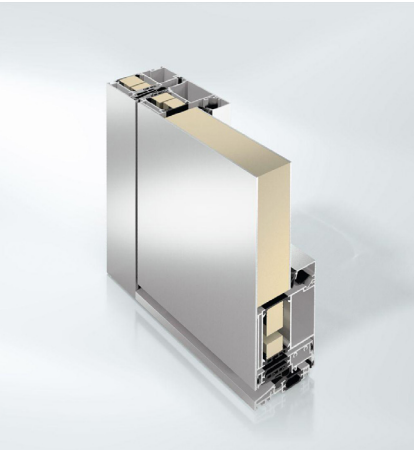


Schüco ADS 90.SI

Aluminium Door System



Schüco ADS 90.SI



Schüco door ADS 90.SI



Schüco door ADS 90.SI corner

The aluminium door system Schüco ADS 90.SI offers the highest level of flexibility. It can be combined with a wide variety of additional functions such as the award-winning Schüco Door Control System (DCS) for easy and design-oriented access control. The conjunction results in an optimal combination of energy efficiency, modern technology and highest design standards.

Energy efficiency and thermal insulation play an increasingly important role in new builds and in the renovation of residential and commercial buildings. With the Schüco ADS90.SI (Super Insulation) door system, Schüco is setting a low-energy and system standard for aluminium doors. Expanded insulation zones, a continuous centre gasket design and special glazing rebate insulation achieve unbeatable system properties, such as resistance to driving rain of up to 750Pa and U_f -values of $1.4 \text{ W}/(\text{m}^2\text{K})$. With appropriate triple glazing or a leaf-enclosing infill panel, outstanding U_g -values better $<1.4 \text{ W}/(\text{m}^2\text{K})$ can be achieved.

Product benefits	
Schüco ADS 90.SI	
<ul style="list-style-type: none"> ▪ Inward- and outward-opening, flush-fitted door construction with a basic depth of 90mm ▪ Excellent thermal insulation (U_f-value from $1.4 \text{ W}/(\text{m}^2\text{K})$) and possible U_g-values from maximally $1.4 \text{ W}/(\text{m}^2\text{K})$ due to expanded insulation zone with foam-filled insulating bars and glazing rebate insulation ▪ Increased weather-tightness and resistance to driving rain up to 750 Pa in accordance with DIN EN 12208, due to use of continuous centre gasket ▪ Increased sound reduction ▪ Leaf heights up to 2500mm and leaf widths up to 1400mm possible ▪ Leaf weights up to 160kg can be supported ▪ Range of panic locks ▪ Easy-access thresholds ▪ Burglar resistance up to RC3 (WK3) in accordance with DIN EN 1627 	
Fabrication benefits	
<ul style="list-style-type: none"> ▪ New ADS inner profile components for fixing the fittings and without interrupting the centre gasket sealing level ▪ Door leaf with leaf-enclosing infill on one side or both sides ▪ Available rolled together by customer and re-rolled by Schüco ▪ Split insulating bar to counter the bimetallic effect 	

Technical data		
Test	Standard	Value
Thermal insulation	DIN EN 1077-2	Value in $\text{W}/(\text{m}^2\text{K})$ maximally 1.4
Burglar resistance	DIN V ENV 1627	RC3 (WK3)
Air permeability	DIN EN 12207	Class 4
Watertightness	DIN EN 12208	to 750 E
Wind resistance	DIN EN 112210 ¹	to Class C4
Mechanical loading	DIN EN 13115	

¹The amount of deflection will depend on the profile

Schüco ADS 90.SI



As a leader in innovation for system-based construction, Schüco aluminium door systems combine the highest standards in terms of energy safety, security and design with market-specific requirements.

Schüco International KG

www.schueco.com

www.schueco.de

Folgen Sie uns:
Follow us:



Schüco – System solutions for windows, doors and façades

Based in Bielefeld, the Schüco Group develops and sells system solutions for windows, doors and façades. With 6330 employees worldwide, the company strives to be the industry leader in terms of technology and service both now and in the future. In addition to innovative products for residential and commercial buildings, the building envelope specialist offers consultation and digital solutions for all phases of a building project – from the initial idea through to design, fabrication and installation. Schüco works with 10,000 fabricators and 30,000 architectural practices, as well as construction professionals who commission buildings around the world. Founded in 1951, the company is now active in more than 80 countries and achieved a turnover of 1.995 billion euros in 2021. For more information, visit www.schueco.com

Thermosash 
BUILDING ENVELOPE SOLUTIONS™

SCHÜCO

The "Schüco" logo and other logos are protected in Germany and various international markets. We will provide detailed information upon request.



NZ04_2023/Printed in New Zealand
We reserve the right to make technical changes and to correct errors. Products may differ from illustrations.

Overview

	Schüco ADS 112 IC	Schüco ADS 90.SI	Schüco ADS 90 PL.SI	Schüco ADS 75.SI	Schüco ADS 75 HD.HI	Schüco ADS 65	Schüco ADS 65 HD	Schüco ADS 65.NI	Schüco ADS 60
Energy									
Thermally insulated					■	■	■		■
High Thermally insulated	■	■	■	■	■				
U _f -values in W/(m ² K) from ¹	1.0	1.4	1.6	2.0	1.3	2.2	2.9	-	2.6
Automatic door seal		■	■	■	■	■	■	■	■
Design									
Basic depth in mm	112	90	90	75	75	65	65	65	60
Leaf Sizes									
Width in mm	1400	1400	1400	1250	1250	1250	1400	1250	1100
Height in mm	2500	2500	2500	2500	3000	2500	3000	2500	2500
Leaf weight in kg									
Barrel hinge	160	160	160	150	200	150	200	150	120
Surface-mounted door hinge	160	160	160	150	200	150	200	150	150
Design types									
RL (Residential Line)			■	■	■	■	■	■	■
SL (Soft Line)	■	■	■	■	■	■	■	■	■
Continuous leaf/sill		C/L	C/L	C/L	C/L	C/L	C/L	C/L	C
Opening types									
Inward opening	■	■	■	■	■	■	■	■	■
Outward opening			■	■	■	■	■	■	■
Flush-fitted			■	■	■	■	■	■	■
Face-fitted			■	■	■	■	■	■	■
Hinges									
Concealed hinge 100° /80°	■	■	■	■	■	■	■	■	■
Barrel Hinge	■	■	■	■	■	■	■	■	■
Surface-mounted door hinge	■	■	■	■	■	■	■	■	■

¹ Face widths 147mm

Overview

	Schüco ADS 112 IC	Schüco ADS 90.SI	Schüco ADS 90 PL.SI	Schüco ADS 75.SI	Schüco ADS 75 HD.HI	Schüco ADS 65	Schüco ADS 65 HD	Schüco ADS 65.NI	Schüco ADS 60
Rolling options									
Pre-rolled	■	■	■	■	■	■	■	■	■ ²
Rolled together by customer	■	■	■	■	■	■	■	■	■
Pre-rolled by Schüco	■	■	■	■	■		■		
Leaf-enclosing infill	■	■	■	■	■	■	■	■	■
Dual colour	■	■	■	■	■	■	■	■	■
Security									
Burglar Resistance									
WK2 (RC2)	■	■	■	■	■	■	■	■	■
Wk3 (RC3)		■	■	■	■	■	■	■	
Emergency exit switch		■	■	■	■	■	■	■	
Panic fitting DIN EN 1125/179		■		■	■	■	■	■	■
Hinges protected against vandalism		■	■	■	■	■	■	■	
Automation									
Integration with building management system		■		■	■	■	■	■	
Door manager		■		■	■	■	■	■	
Monitoring /sensors	■	■		■	■	■	■	■	■
Access control									
Card reader		■	■	■	■	■	■	■	
Fingerprint		■	■	■	■	■	■	■	
Radio control		■	■	■	■	■	■	■	■
Keypad		■	■	■	■	■	■	■	
Easy access									
Easy access threshold	■	■	■	■	■	■	■	■	■
Top door closer	■	■	■	■	■	■	■	■	■
Keyless entry	■	■	■	■	■	■	■	■	■
Side-hung door motor	■	■	■	■	■	■	■	■	■

² Selected profiles



Thermosash

BUILDING ENVELOPE SOLUTIONS™

SCHÜCO

PARTNER

PRODUCTS

CANOPIES
SHOPFRONT
RAINSCREENS
BALUSTRADES
THERMAL BREAK
DOORS & SLIDERS
CHANNEL GLAZING
MECHANICAL LOUVRES
ROOFLIGHTS & ATRIUMS
COMMERCIAL WINDOWS
SOLARSHADING, LOUVRES & FINS
TOTAL VISION - STRUCTURAL GLAZING
UNITISED CURTAINWALL & PANELWALL FAÇADES
SCHÜCO - HIGH END RESIDENTIAL WINDOWS & DOORS

Auckland

158-164 Central Park Drive,
Henderson, Auckland 0610
PO Box 100-340, North Shore,
Auckland 0745, New Zealand
P: +64 9 444 4944
F: +64 9 444 4886

Wellington

17-19 Marine Parade, Petone,
Lower Hutt 5012, New Zealand
PO Box 38-645, Wellington Mail
Centre, Lower Hutt 5045, New Zealand
P: +64 4 939 4500
F: +64 4 939 4499

Christchurch

12 Braeburn Drive
Hornby, Christchurch 8040
PO Box 313, Christchurch 8140,
New Zealand
P: +64 4 348 4004
F: +64 4 348 4088

www.thermosash.co.nz