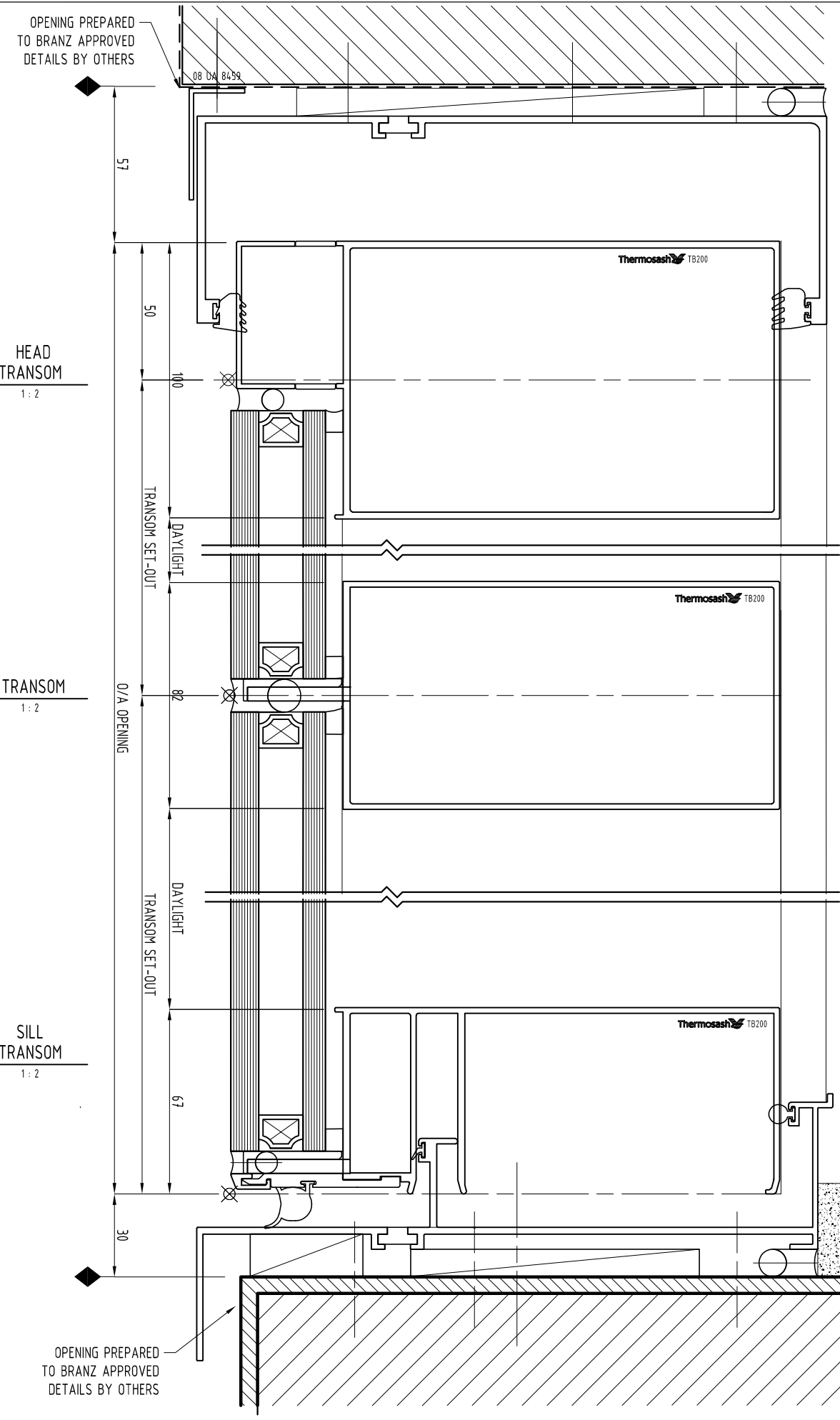
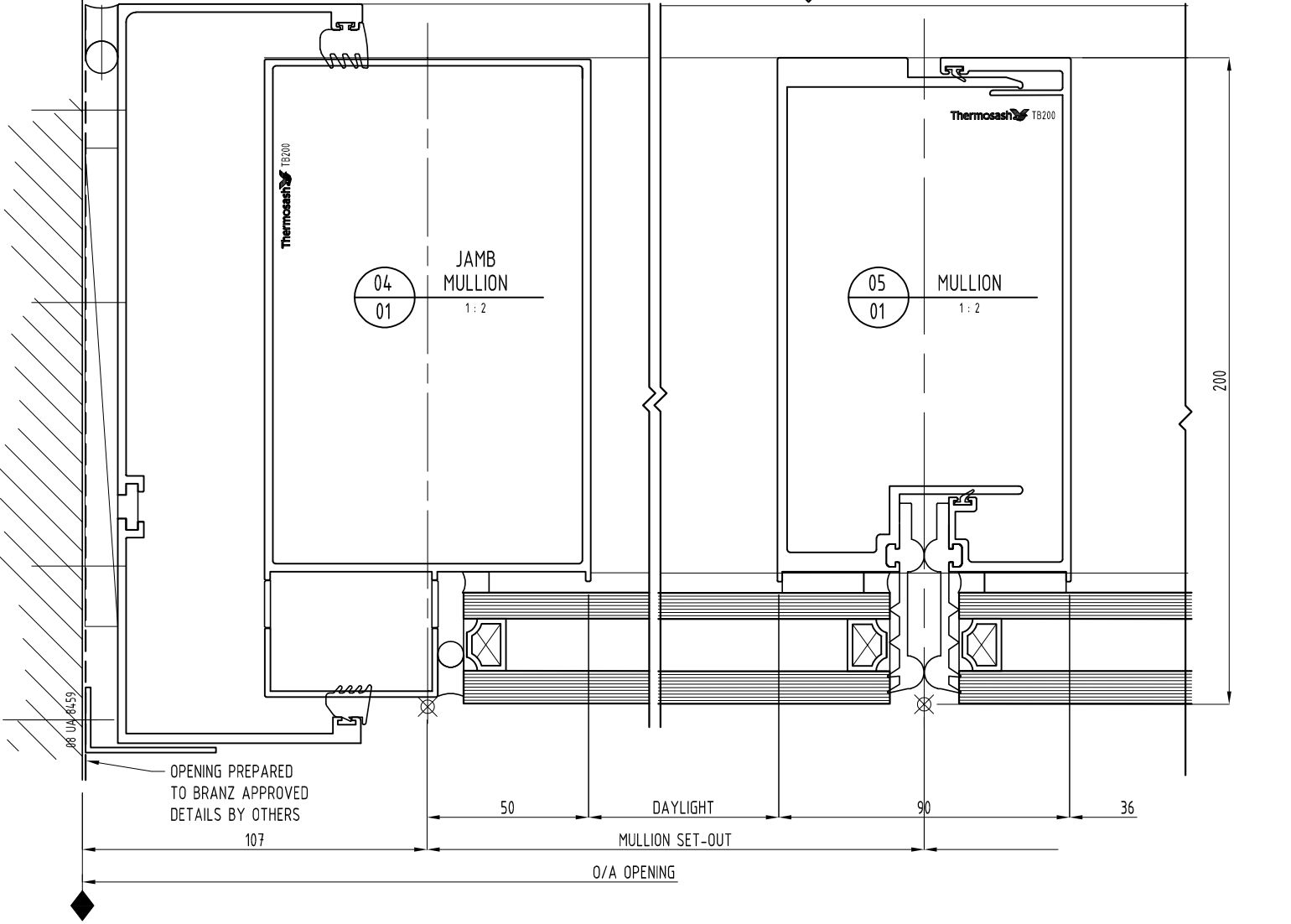
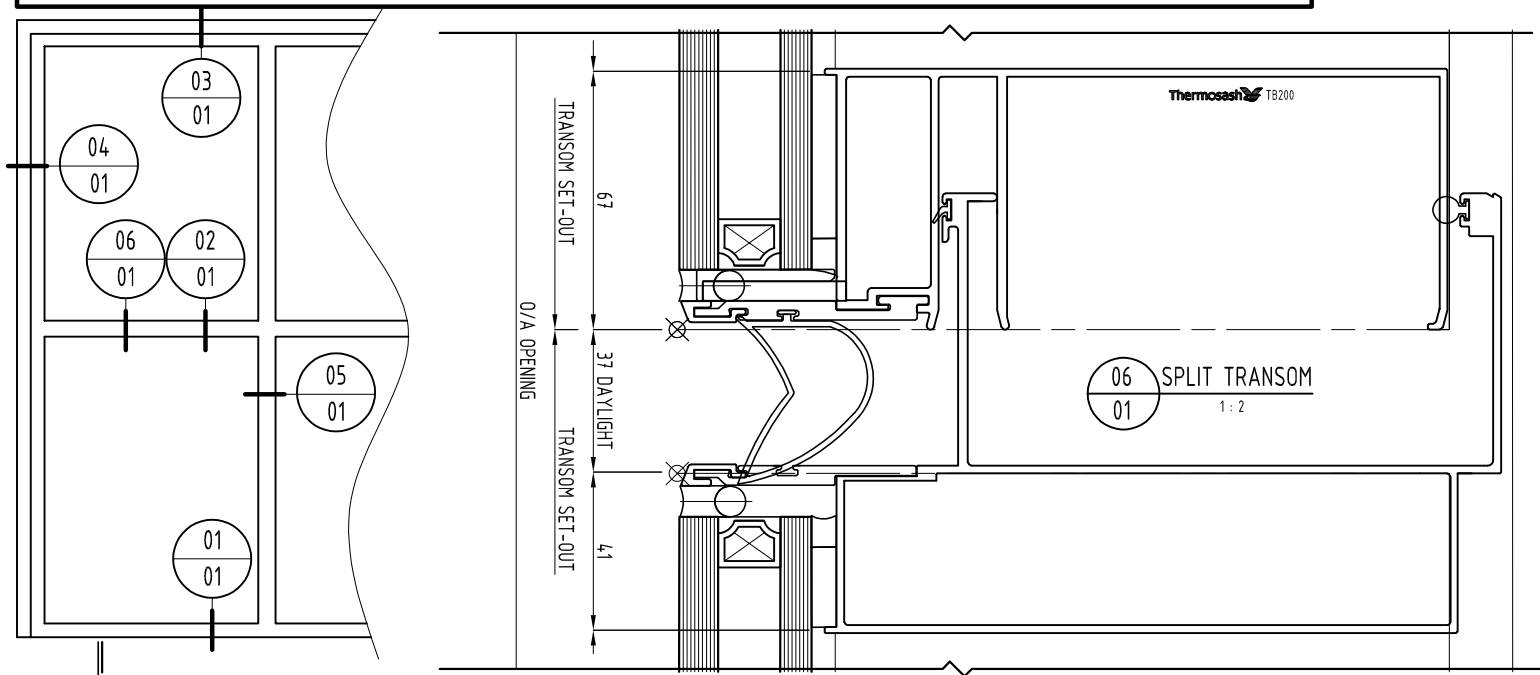



NOTES:
 1) DRAWING TO BE USED IN CONJUNCTION WITH 'MASTERSPEC' (4211)
 2) WINDOW SYSTEMS REQUIRE SPECIFIC DESIGN DEPENDING ON SPANS, WIND-LOADS, BUILDING CONDITIONS, ETC.
 3) INSIDE GLAZE, INTERNAL REINFORCEMENT AND SEISMIC FRAME OPTIONS AVAILABLE
 GLAZING: GLASS THICKNESS TO SUIT REQUIREMENTS
 HARDWARE: STANDARD HARDWARE OPTIONS
 FINISHES: POWDER-COAT / ANODISED / PVF²



SYSTEM : PW1000 UNITISED HIGH PERFORMANCE PANEL SYSTEM www.thermosash.co.nz ~ AUCKLAND: (09)444-4944 ~ WELLINGTON: (04)939-4500 ~ CHRISTCHURCH: (03)348-4004	TYPE : SEISMIC, THERMALLY BROKEN 200mm MULLION DOUBLE GLAZED	SCALE:	DATE:	
		1:2 @ A3	Jul-20	
		PAGE:	TB200-01	

T:\USERS\valine's_stuff\KENT\FINAL TO KENT\TB200-01.dxf