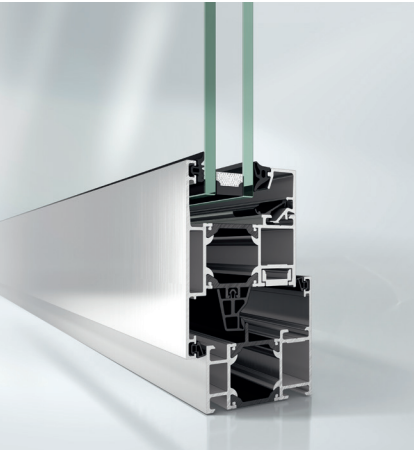


Schüco AWS 60 / AWS 60 BS

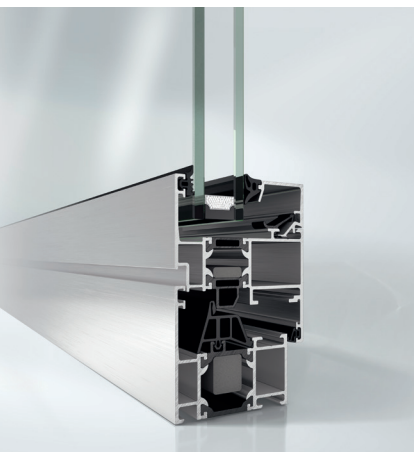
Aluminium window system



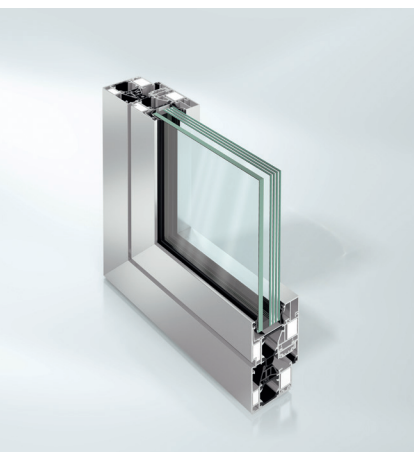
Schüco AWS 60 / AWS 60 BS



Schüco window AWS 60



Schüco window AWS 60.HI



Schüco window AWS 60 FR30

With its new generation of AWS (Aluminium Window System) windows, Schüco has created a system to meet all requirements. Functional benefits are combined with architectural and design features. Advantages such as good thermal insulation are combined with minimal basic depths and slender face widths.

Product benefits

- Basic depth 60mm
- Good thermal insulation due to wide insulation zone
- Also available as an HI System with thermal insulation from a U_f value of $1.7W/(m^2K)$
- Broad range of profiles including for the Schüco AWS 60 RL (Residential Line and SL (Soft Line) design systems and the Schüco AWS 60 BS block series
- Window series with narrow face widths from 51mm
- Schüco AvanTec concealed fittings up to 160kg for inward-opening systems
- Burglar resistance up to RC2 (WK2) in accordance with DIN EN 1627
- Broad range of solutions for outward-opening systems with standard starter solutions right up to RC2 (WK2) versions

Fabrication benefits

- Profile design in more than one colour
- Compatible with the Schüco ADS door range

Technical data	AWS 60	AWS 60 BS
U_f values in $W/(m^2K)$ from	1.9	2.1
Basic depths in mm	60	60
Sound insulation/standard DIN EN 20140 up to R_w value in dB	45	43
Burglar resistance/standard DIN EN 1627 (Class)	RC2 (WK2)	RC2 (WK2)
Watertightness/standard DIN EN 12208 (Class)	9a	9a
Air permeability, DIN 12207 (Class)	4	4
Wind load resistance, DIN 12210 (Class)	C5/B5	C5/B5

Schüco AWS 60 / AWS 60 BS



As a leader in innovation for system-based construction, Schüco aluminium window systems combine the highest standards in terms of energy safety, security and design with market-specific requirements.

Schüco International KG

www.schueco.com

www.schueco.de/sonnenschutz
www.schueco.de/sun-shading

Folgen Sie uns:
 Follow us:



Schüco – System solutions for windows, doors and façades

Based in Bielefeld, the Schüco Group develops and sells system solutions for windows, doors and façades. With 6330 employees worldwide, the company strives to be the industry leader in terms of technology and service both now and in the future. In addition to innovative products for residential and commercial buildings, the building envelope specialist offers consultation and digital solutions for all phases of a building project – from the initial idea through to design, fabrication and installation. Schüco works with 10,000 fabricators and 30,000 architectural practices, as well as construction professionals who commission buildings around the world. Founded in 1951, the company is now active in more than 80 countries and achieved a turnover of 1.995 billion euros in 2021. For more information, visit www.schueco.com

Thermosash 
 BUILDING ENVELOPE SOLUTIONS™

SCHÜCO

The "Schüco" logo and other logos are protected in Germany and various international markets. We will provide detailed information upon request.



NZ04_2023/Printed in New Zealand
 We reserve the right to make technical changes and to correct errors. Products may differ from illustrations.

Overview

	Schüco AWS 90 BS.SI+	Schüco AWS 90.SI+	Schüco AWS 75.SI	Schüco AWS 75 BS.SI	Schüco AWS 75 BS.HI	Schüco AWS 75 WF.SI	Schüco AWS 65	Schüco AWS 65 BS	Schüco AWS 65 WF	Schüco AWS 60	Schüco AWS 60 HI	Schüco AWS 60 BS
Energy												
Thermally insulated							■	■	■	■		■
High Thermally insulated			■	■	■	■					■	
Suitable for passive houses	■	■										
U _f -values in W/(m ² K) from	0.71	0.8	0.92	1.3	1.3	1.4	1.9	2.0	2.6	1.9	1.7	2.1
Weighted sound insulation index R _w in dB	47	49	48	49	45	49	47	44	44	45	45	43
Design												
Basic depth in mm	90	90	75	75	75	75	65	65	65	60	60	60
Fittings												
Schüco AvanTec, concealed	■	■	■	■	■	■	■	■	■	■	■	■
Schüco TipTronic, concealed	■	■	■	■	■	■	■	■	■	■	■	
Design Options												
RL (Residential Line)			■				■			■		
SL (Soft Line)			■				■			■		
MC (Multi Contour)							■			■	■	
BS (Block system)		■		■		■		■				■
WF (Window Facade)					■				■			
Areas of Use												
Facade insert unit	■	■	■	■		■	■	■		■	■	■
Window facade					■				■			
Floating window				■		■		■				■
Compatible Schüco ADS door system	■		■				■			■		

Overview

	Schüco AWS 90 BS.SI+	Schüco AWS 90.SI+	Schüco AWS 75.SI	Schüco AWS 75 BS.SI	Schüco AWS 75 BS.HI	Schüco AWS 75 WF.SI	Schüco AWS 65	Schüco AWS 65 BS	Schüco AWS 65 WF	Schüco AWS 60	Schüco AWS 60.HI	Schüco AWS 60 BS
Series												
Schüco Avan Tec												
Side -hung (SH), turn/tilt (TT), bottom-hung (BH), tilt-before-turn (TbT)	■	■	■	■	■	■	■	■	■	■	■	■
Double-vent	■	■	■	■		■	■	■		■	■	■
Crank-operated turn/tilt vent												
Tilt/slide vent	■	■	■	■		■	■		■	■	■	■
Weighted sound insulation index Rw in dB	■	■	■	■	■	■	■	■	■	■	■	■
Outward-opening			■			■			■	■	■	
Side-hung, top-hung vent			■			■				■	■	
Horizontal and vertical pivot vent												
Security												
Burglar resistance in accordance with DIN EN 1627												
Schüco AvanTec WK1	■	■	■	■	■	■	■	■	■	■	■	■
Schüco AvanTec RC2 (WK2)	■	■	■	■	■	■	■	■		■	■	■
Schüco AvanTec RC3 (WK3)	■	■	■			■	■	■				
Schüco TipTronic WK1	■	■	■	■	■	■	■	■	■			
Schüco TipTronic RC2 WK2	■	■	■	■	■	■	■					
Monitoring of opening and closing, display	■	■	■	■	■	■	■	■	■	■	■	■
Automation												
Schüco TipTronic												
Turn / tilt fitting	■	■	■	■	■	■	■	■	■	■	■	■
Toplight	■	■	■	■	■	■	■	■	■	■	■	■
Outward opening			■				■					
Group control, bus automation	■	■	■	■	■	■	■	■	■			
Automatic night-time cooling, automatic ventilation	■	■	■	■	■	■	■	■	■			

PRODUCTS

CANOPIES
SHOPFRONT
RAINSCREENS
BALUSTRADES
THERMAL BREAK
DOORS & SLIDERS
CHANNEL GLAZING
MECHANICAL LOUVRES
ROOFLIGHTS & ATRIUMS
COMMERCIAL WINDOWS
SOLARSHADING, LOUVRES & FINS
TOTAL VISION - STRUCTURAL GLAZING
UNITISED CURTAINWALL & PANELWALL FAÇADES
SCHÜCO - HIGH END RESIDENTIAL WINDOWS & DOORS

Auckland

158-164 Central Park Drive,
Henderson, Auckland 0610
PO Box 100-340, North Shore,
Auckland 0745, New Zealand
P: +64 9 444 4944
F: +64 9 444 4886

Wellington

17-19 Marine Parade, Petone,
Lower Hutt 5012, New Zealand
PO Box 38-645, Wellington Mail
Centre, Lower Hutt 5045, New Zealand
P: +64 4 939 4500
F: +64 4 939 4499

Christchurch

12 Braeburn Drive
Hornby, Christchurch 8040
PO Box 313, Christchurch 8140,
New Zealand
P: +64 4 348 4004
F: +64 4 348 4088