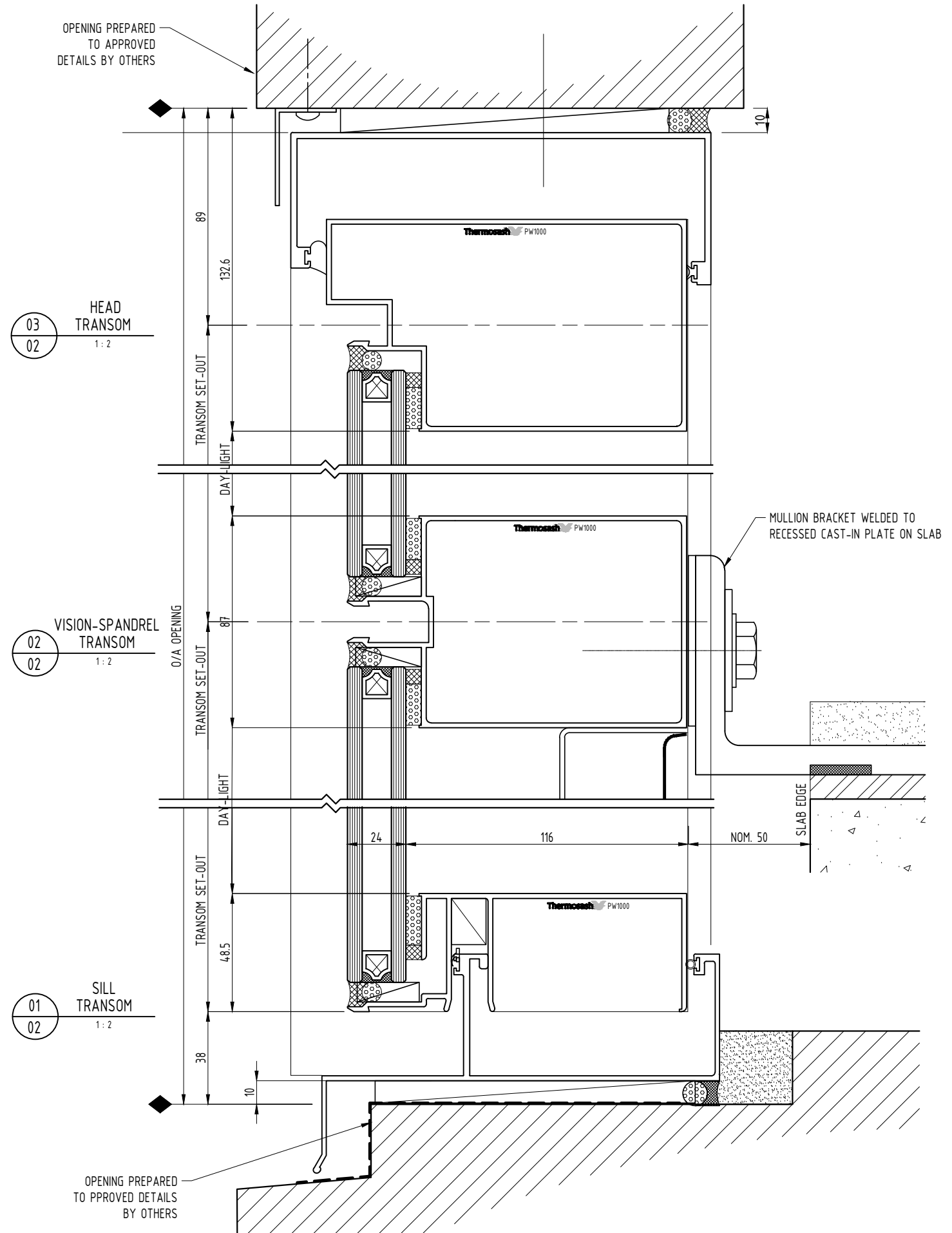
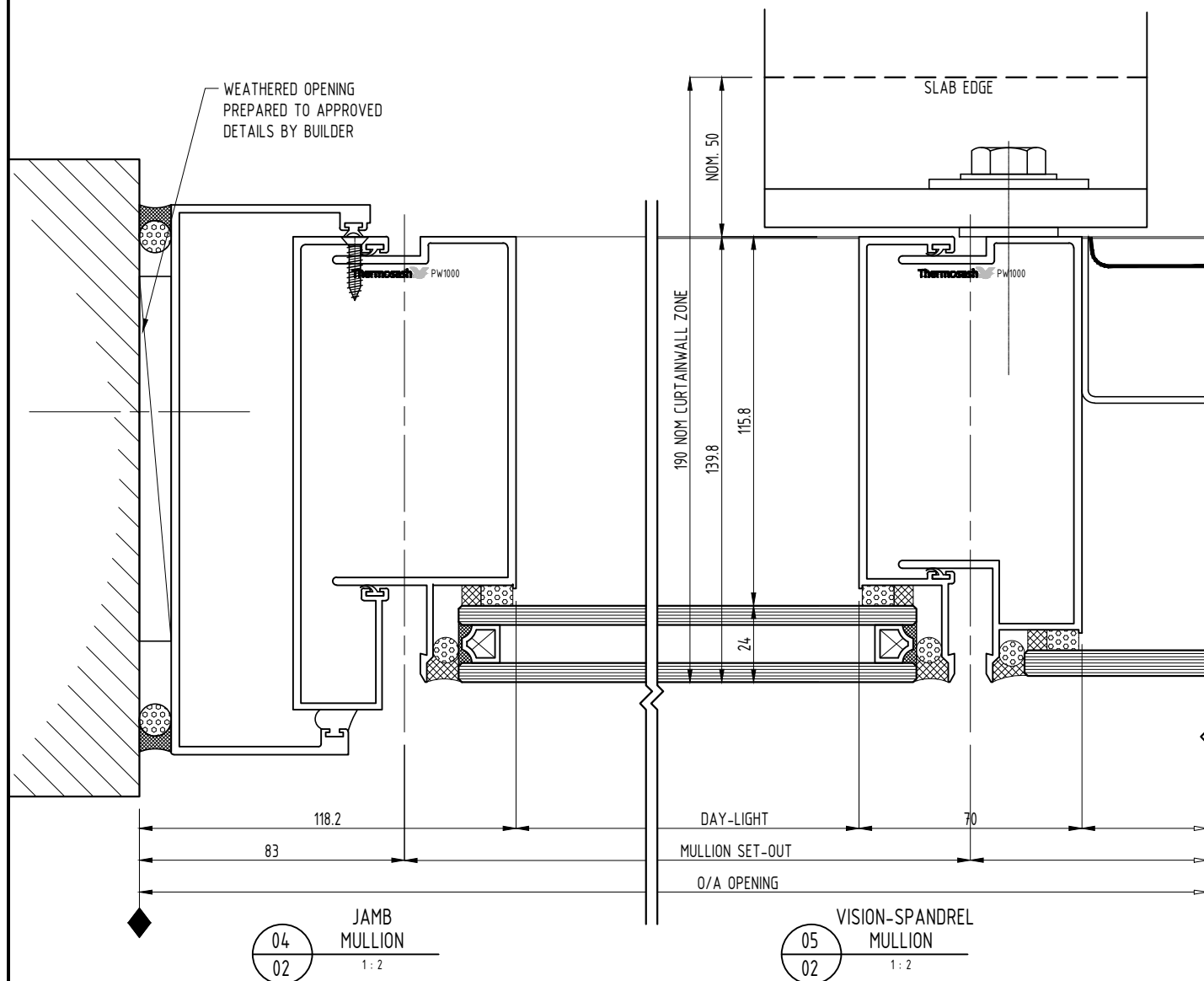
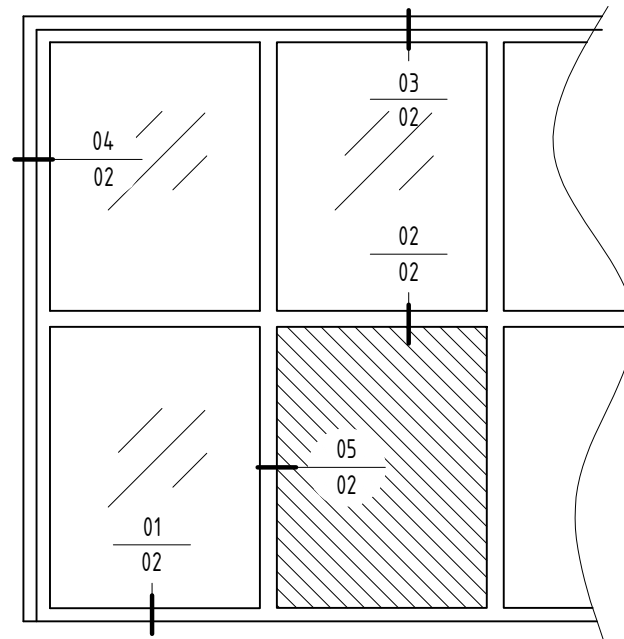



NOTES:

- 1) DRAWING TO BE USED IN CONJUNCTION WITH 'MASTERSPEC' (4211)
- 2) WINDOW SYSTEMS REQUIRE SPECIFIC DESIGN DEPENDING ON SPANS, WIND-LOADS, BUILDING CONDITIONS, ETC.
- 3) INSIDE GLAZE, INTERNAL REINFORCEMENT AND SEISMIC FRAME OPTIONS AVAILABLE

GLAZING: GLASS THICKNESS TO SUIT REQUIREMENTS  
 HARDWARE: STANDARD HARDWARE OPTIONS  
 FINISHES: POWDER-COAT / ANODISED / PVF<sup>2</sup>



SYSTEM : PW1000 UNITISED HIGH PERFORMANCE PANEL SYSTEM	TYPE : SEISMIC 14.0mm MULLION DOUBLE GLAZED	SCALE: 1:2 @ A3	DATE: 15-01-18	 <p><b>Thermosash</b> BUILDING ENVELOPE SOLUTIONS™</p>
www.thermosash.co.nz ~ AUCKLAND: (09)444-4944 ~ WELLINGTON: (04)939-4500 ~ CHRISTCHURCH: (03)348-4004		PAGE: PW1000-02		

P:\CONTRACTS\700 - MANUAL\For Website\Unitted High Performance Panel Systems - PW1000\PW1000 PW1000 - DOUBLE GLAZED SEISMIC-REV3.dwg