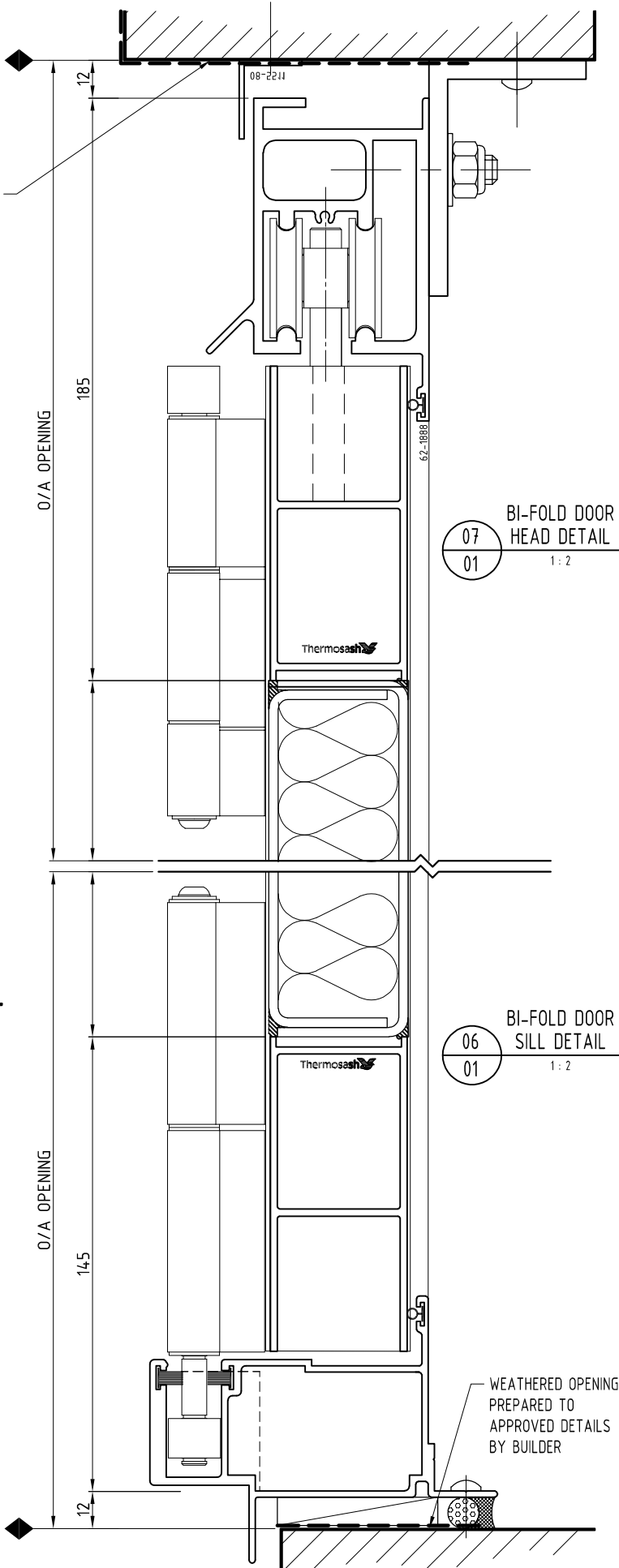
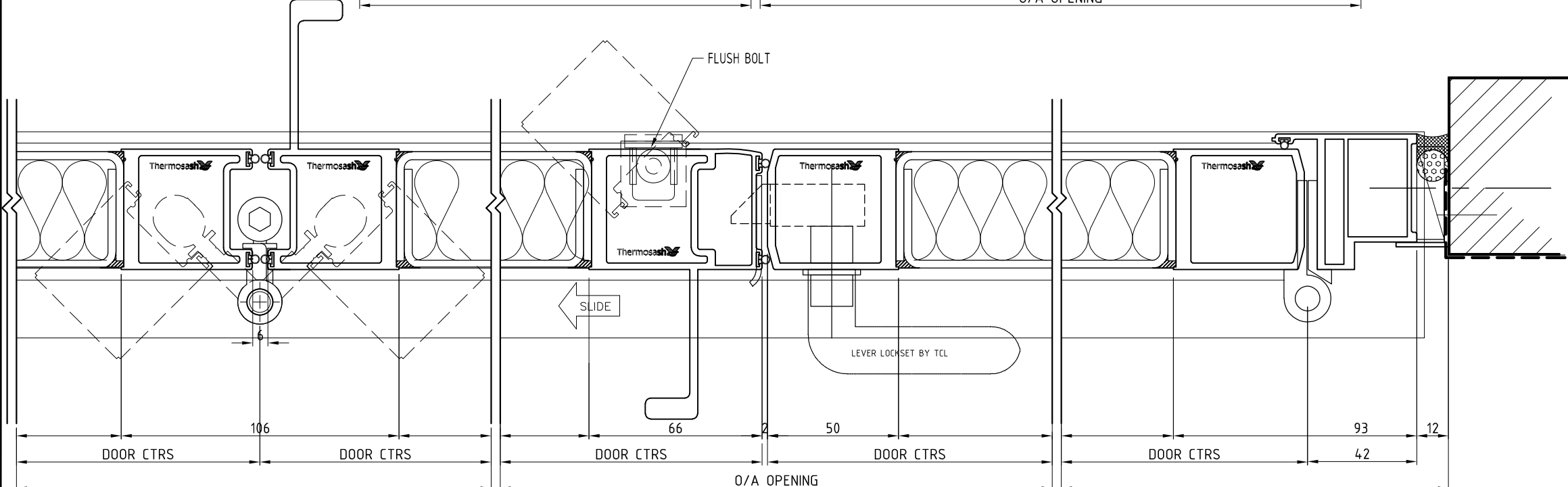
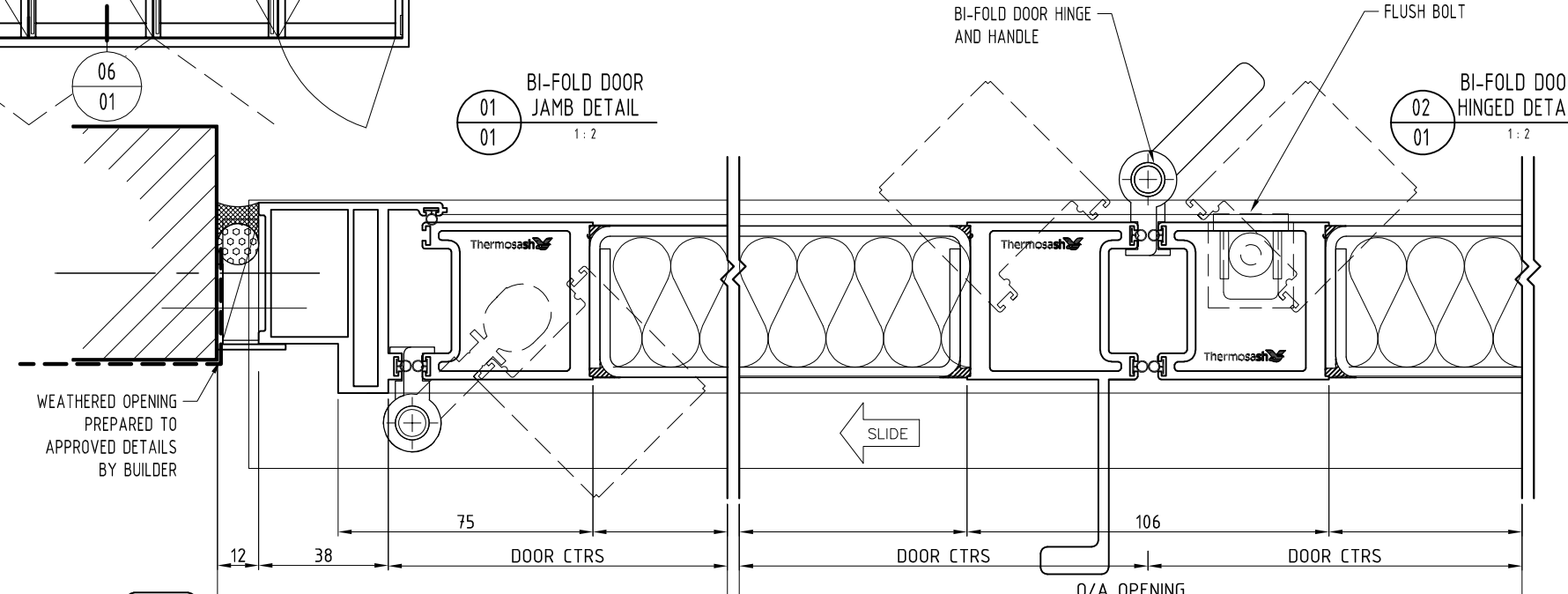


NOTES:
 1) DRAWING TO BE USED IN CONJUNCTION WITH 'MASTERSPEC' (4521)
 2) WINDOW SYSTEMS REQUIRE SPECIFIC DESIGN DEPENDING ON SPANS, WIND-LOADS, CLADDING SPECIFIED, ETC.
 3) INSIDE GLAZE, INTERNAL REINFORCEMENT AND SEISMIC FRAME OPTIONS AVAILABLE

HARDWARE: STANDARD HARDWARE OPTIONS
 FINISHES: POWDER-COAT / ANODISED / PVF²

SUPPORT STRUCTURE AT HEAD TO DEFLECT MAXIMUM 5mm UNDER DEADLOAD OF (HUNG) DOOR SYSTEM



03
01
HINGED/BI-FOLD DOOR MEETING STILE
1:2

04
01
BI-FOLD DOOR MEETING STILE
1:2

05
01
BI-FOLD DOOR JAMB DETAIL
1:2

06
01
BI-FOLD DOOR SILL DETAIL
1:2

07
01
BI-FOLD DOOR HEAD DETAIL
1:2

SYSTEM :
 DELTA40
 HEAVY DUTY COMMERCIAL

TYPE :
 BI FOLD DOORS
 WITH ALUMINUM CLADDING + INFILL

www.thermosash.co.nz ~AUCKLAND: (09)444-4944 ~WELLINGTON: (04)939-4500 ~CHRISTCHURCH: (03)348-4004

SCALE:
 1:2 @ A3

DATE:
 Nov-20

PAGE:
 BF-04

SCALE:
 1:2 @ A3

DATE:
 Nov-20

PAGE:
 BF-04



T:\USERS\Avinie's_stuff\KENT\FINAL TO KENT\Submit\10-BF-04.dwg