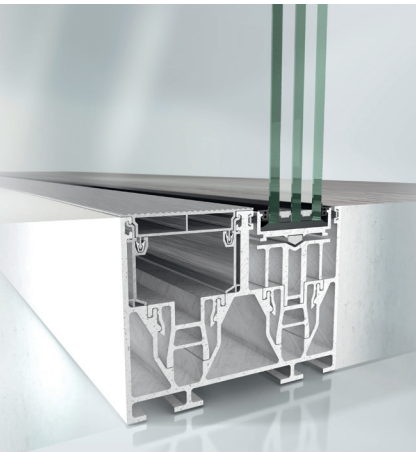


Schüco ASS 77 PD

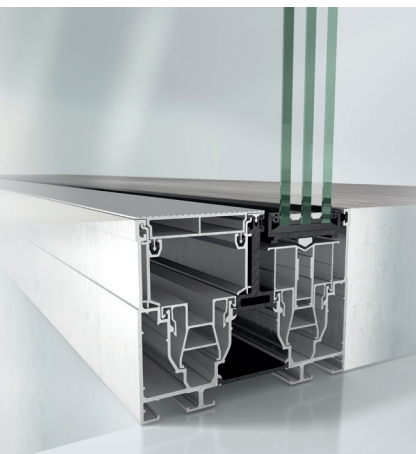
Aluminium sliding system



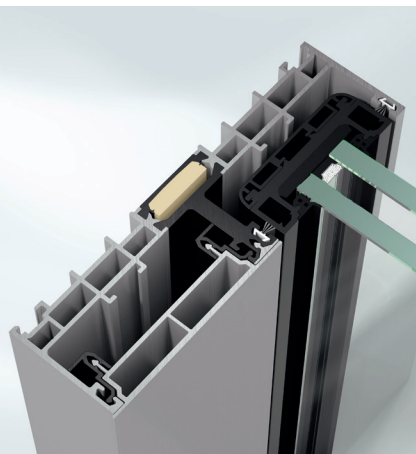
Schüco Sliding System ASS 77 PD



Schüco Sliding System ASS 77 PD.SI



Schüco Sliding System ASS 77 PD.HI



Schüco Sliding System ASS 77 PD.HI manual

The Schüco ASS 77 PD sliding system (Panorama Design) makes it possible to create room-height sliding systems with floor-to-ceiling glazing. Architects and clients alike admire its slender profile face widths, flexible design options, and thermal insulation perfectly suited to any requirement.

Product benefits

Schüco ASS 77 PD

- The floor-to-ceiling glazing maximum transparency allows as much light as possible to enter due to face widths from just 37mm in the interlock section and a concealed outer frame
- Fast, silent and convenient opening and closing at the touch of a button using an external control panel or switch
- Can be controlled by fingerprint, radio, or connected to an iPad
- Wide choice of styles for design freedom
- Handle-free design solution with clean lines
- Concealed profile-integrated drive and locking system
- Asymmetrical subdivision of leaves
- The outer frame height of just 90mm at the side and in the sill allows integration in the building structure even with a limited projection
- ASS 77PD.HI manual with an integrated vent-height pull grip for a high level of user comfort and attractive vent design, also available as a lockable version

Fabrication benefits

- Roller replacement without removing the moving vent
- Very simple commissioning thanks to Plug&Play connector plug
- Using the device for bonding the leaves, spaces can be saved when bonding the leaves to the level of quality required
- Adjustment for structural expansion by means of equalisation bracket
- Installation of the outer frame possible in buildings with minimal installation space at the side

Technical data				
Test	ASS 77 PD.SI	ASS 77 PD.HI	ASS 77 PD.NI	ASS 77 PD.HI manual
Thermal insulation	from 0.85 W/(m²K)	from 1.0 W/(m²K)	from 1.9 W/(m²K)	from 0.96 W/(m²K)
Basic depth of vent frame	77mm	77mm	77mm	77mm
Vent size (WxH)	max. 3200mm / 3500mm	max. 3200mm / 3500mm	max. 3200mm / 3500mm	max. 3200mm / 3000mm
Vent weight	max. 500kg	max. 500kg	max. 500kg	max. 500kg
Security Class	RC2 (WK2)*	RC2 (WK2)*	RC2 (WK2)*	RC2 (WK2)*

*on request

Three options: suitable for every climate zone

Schüco ASS 77 PD.SI - with maximum thermal insulation

The Schüco ASS 77 PD.SI sliding system (super insulation) facilitates large sliding systems with profiles made of ultra-modern, pultruded glass-fibre reinforced plastic. New and cutting edge materials and coating technologies result in unique thermal insulation from $U_w=0.85 \text{ W/(m}^2\text{K)}$. The elegant sliding system also offers the highest level of transparency, allowing in as much light as possible.

The panoramic design of the Schüco Sliding System ASS 77 PD.SI is distinguished by its minimal profile face widths in the interlock section and an outer frame and vent frame concealed in the attachment to the building structure.

The system not only looks good, it also meets the highest requirements in terms of ease of use and safety. Profile-integrated automatic drive and lock technology maximises user comfort. The integrated finger-trap protection and infrared light curtains embedded in the ceiling for monitoring the entrance area provided a high level of operating security. The intelligent sensor technology ensures maximum comfort and security to resistance class 4.

Schüco ASS 77 PD.HI - highly thermally insulated

The SchücoASS 77 PD.HI sliding system (high insulation) is very easy to use, has almost limitless design options and provides the highest level of transparency. A highly effective combination of aluminium and different types of plastic provides superb thermal insulation from $U_w=1.0 \text{ W/(m}^2\text{K)}$. The more advanced Schüco Sliding System ASS 77 PD.HI manual sets new standards with an integrated vent-height pull grip. The sliding system therefore offers both user comfort and an attractive vent design.

Schüco ASS 77 PD.NI - non-insulated system

The non-insulated sliding system with thermal insulation from $U_w=1.9 \text{ W/(m}^2\text{K)}$ is perfectly suited to use inside and in warm climate zones.

With the Schüco Sliding System ASS 77 PD.NI (Non Insulation), architects achieve creative solutions for rooms that are flooded with light, much like with the other system versions.



Schüco ASS 77 PD



With the Schüco Sliding system ASS 77 PD, large sliding systems can be created with maximum transparency and light penetration. The large glazed panoramic system offers almost unlimited design options.

Schüco International KG

www.schueco.com

www.schueco.de

Folgen Sie uns:
Follow us:



Schüco – System solutions for windows, doors and façades

Based in Bielefeld, the Schüco Group develops and sells system solutions for windows, doors and façades. With 6330 employees worldwide, the company strives to be the industry leader in terms of technology and service both now and in the future. In addition to innovative products for residential and commercial buildings, the building envelope specialist offers consultation and digital solutions for all phases of a building project – from the initial idea through to design, fabrication and installation. Schüco works with 10,000 fabricators and 30,000 architectural practices, as well as construction professionals who commission buildings around the world. Founded in 1951, the company is now active in more than 80 countries and achieved a turnover of 1.995 billion euros in 2021. For more information, visit www.schueco.com

Thermosash 
BUILDING ENVELOPE SOLUTIONS™

SCHÜCO

The "Schüco" logo and other logos are protected in Germany and various international markets. We will provide detailed information upon request.



NZ02/2023/Printed in New Zealand
We reserve the right to make technical changes and to correct errors. Products may differ from illustrations.

Overview

	Schüco ASS 77 PD.SI	Schüco ASS 77 PD.HI	Schüco ASS 50	Schüco ASS 80 FD.HI	Schüco ASS 70 FD	Schüco AS FD 90.HI	Schüco AS FD 75	Schüco AS PD 75.HI	Schüco ASE 67 PD	Schüco ASE 80.HI	Schüco ASE 80	Schüco ASE 60	Schüco AWS 90.SI+ PASK
	Series												
Energy													
Thermally insulated			■		■		■		■				
High Thermally insulated	■	■		■		■		■		■	■	■	■
Design													
Basic depth of vent frame in mm	77	77	50	80	70	90	75	75	67	80	80	60	100
Number of tracks													
Single track			■	■	■	■	■		■	■	■	■	■
Double track	■	■	■					■	■	■	■	■	
Triple track			■						■	■	■	■	
Maximum vent weight in kg	500	500	400	100	100	150	150	500*	400	600	600	600	250
Fittings													
Crank handle			■										
Sliding handle			■					■**	■	■	■	■	
Tilt / slide handle													■
Folding handle				■	■	■	■						
Door handle				■	■	■	■						
Window handle				■	■	■	■						
Operating switch	■	■						■**		■	■	■	
Opening types													
Sliding vent	■	■	■					■		■	■	■	
Lift-and-slide vent			■							■	■	■	
Tilt / slide units													■
Folding sliding door				■	■	■	■						
Areas of Use													
Window	■	■	■	■	■	■	■	■		■	■	■	■
Door	■	■	■	■	■	■	■	■		■	■	■	■

*AS PD 75.HI max weight: 500kg Manual / 600kg Performance Line / 800kg Mechatronic

**AS PD 75.HI fittings: Access Line & Design Line manual or mechatronic operation / Performance Line mechatronic operation only

Overview

	Schüco ASS 77 PD.SI	Schüco ASS 77 PD.HI	Schüco ASS 50	Schüco ASS 80 FD.HI	Schüco ASS 70 FD	Schüco AS FD 90.HI	Schüco AS FD 75	Schüco AS PD 75.H	Schüco ASE 67 PD	Schüco ASE 80.HI	Schüco ASE 80	Schüco ASE 60	Schüco AWS 90.SI+ PASK
	Series												
Security													
Burglar resistance in accordance with DIN EN 1627													
RC2 (WK2)	■	■	■	■	■	■	■	■		■	■	■	■
Monitoring of closing		■				■	■	■		■	■	■	
Automation													
Schüco e-slide			■										
Schüco TipTronic	■	■						■		■	■	■	
Access Control	■	■	■					■					

PRODUCTS

CANOPIES
SHOPFRONT
RAINScreens
BALUSTRADES
THERMAL BREAK
DOORS & SLIDERS
CHANNEL GLAZING
MECHANICAL LOUVRES
ROOFLIGHTS & ATRIUMS
COMMERCIAL WINDOWS
SOLARSHADING, LOUVRES & FINS
TOTAL VISION - STRUCTURAL GLAZING
UNITISED CURTAINWALL & PANELWALL FAÇADES
SCHÜCO - HIGH END RESIDENTIAL WINDOWS & DOORS

Auckland

158-164 Central Park Drive,
Henderson, Auckland 0610
PO Box 100-340, North Shore,
Auckland 0745, New Zealand
P: +64 9 444 4944
F: +64 9 444 4886

Wellington

17-19 Marine Parade, Petone,
Lower Hutt 5012, New Zealand
PO Box 38-645, Wellington Mail
Centre, Lower Hutt 5045, New Zealand
P: +64 4 939 4500
F: +64 4 939 4499

Christchurch

12 Braeburn Drive
Hornby, Christchurch 8040
PO Box 313, Christchurch 8140,
New Zealand
P: +64 4 348 4004
F: +64 4 348 4088