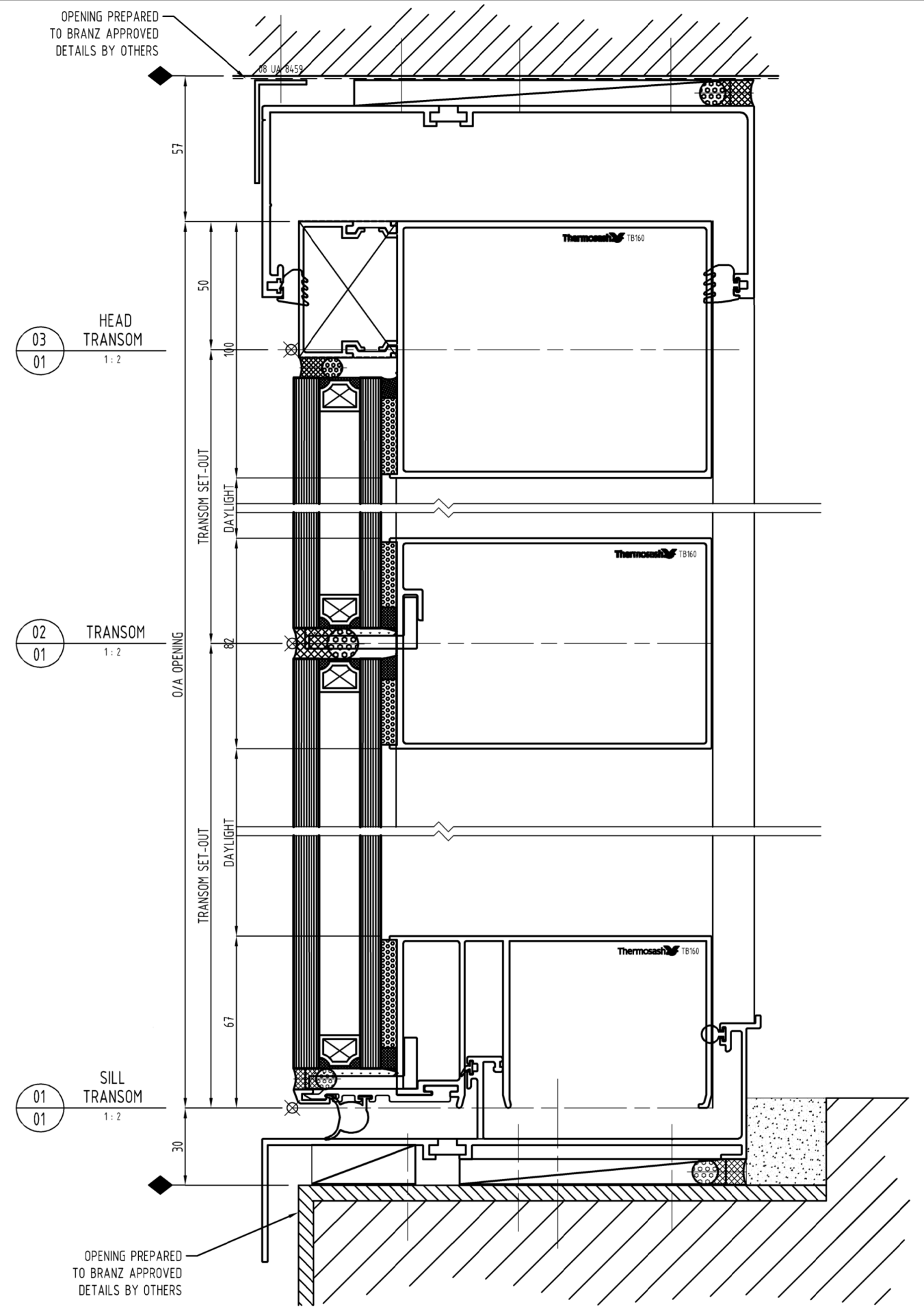
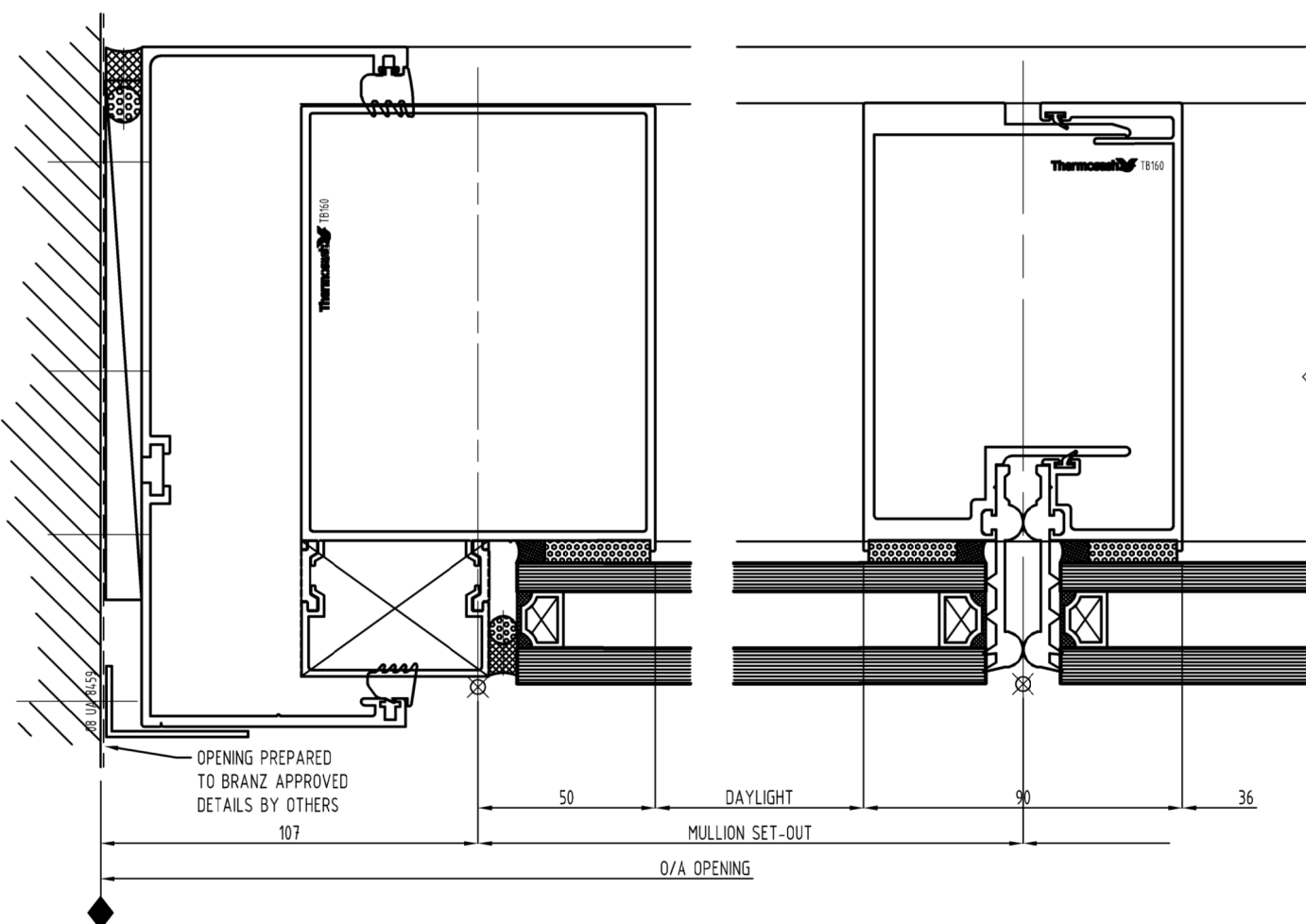
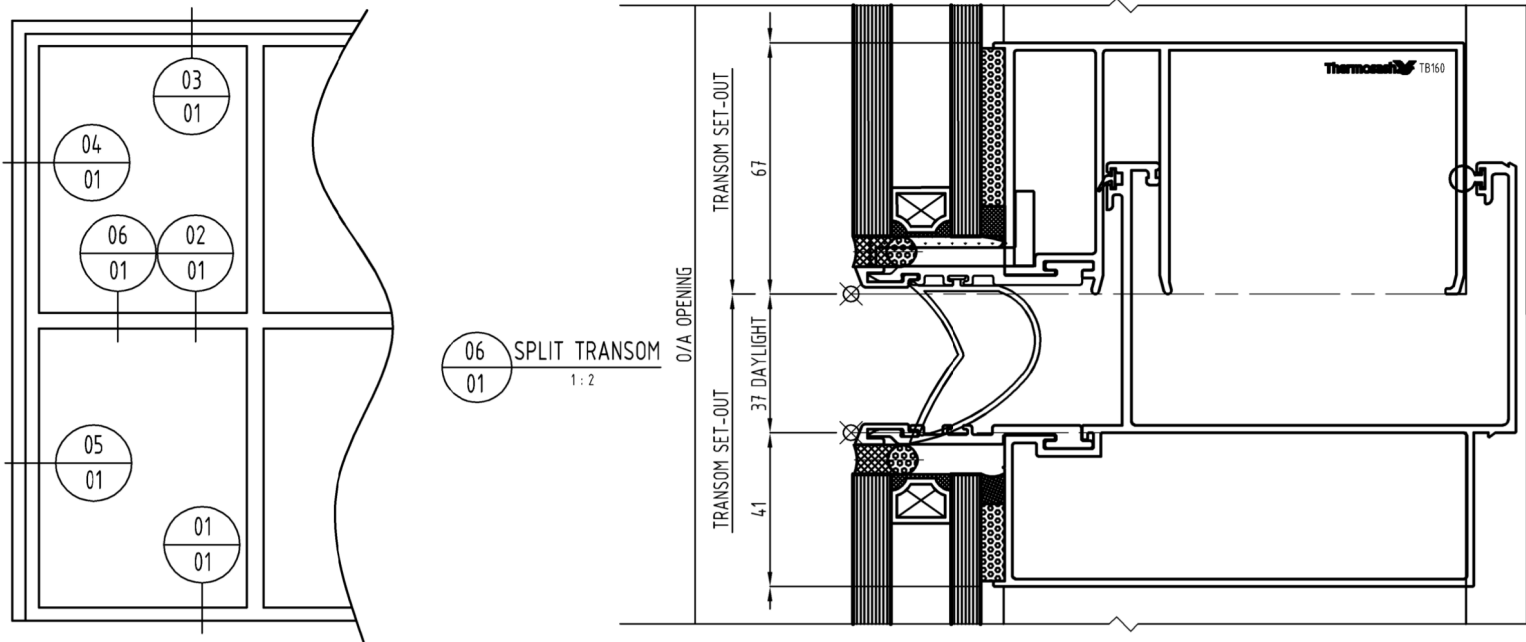


NOTES:
 1) DRAWING TO BE USED IN CONJUNCTION WITH 'MASTERSPEC' (4211)
 2) WINDOW SYSTEMS REQUIRE SPECIFIC DESIGN DEPENDING ON SPANS, WIND-LOADS, BUILDING CONDITIONS, ETC.
 3) INSIDE GLAZE, INTERNAL REINFORCEMENT AND SEISMIC FRAME OPTIONS AVAILABLE

GLAZING: GLASS THICKNESS TO SUIT REQUIREMENTS
 HARDWARE: STANDARD HARDWARE OPTIONS
 FINISHES: POWDER-COAT / ANODISED / PVF²



PW1000 REVIEW : TB160-01		
VERSION DATE	REVIEWER	DATE CHECKED
16-Dec-19	DH	
	RG	
	RS	

SYSTEM :	TYPE :	SCALE:	DATE:
PW1000	SEISMIC, THERMALLY BROKEN	1:2 @ A3	Dec-19
UNITISED HIGH PERFORMANCE PANEL SYSTEM	160mm MULLION DOUBLE GLAZED	PAGE:	TB160-01
www.thermosash.co.nz ~ AUCKLAND: (09)444-4544 ~ WELLINGTON: (04)939-4500 ~ CHRISTCHURCH: (03)348-4004			



PATL MANUALS DESIGN BLOCKS/TB160.dwg