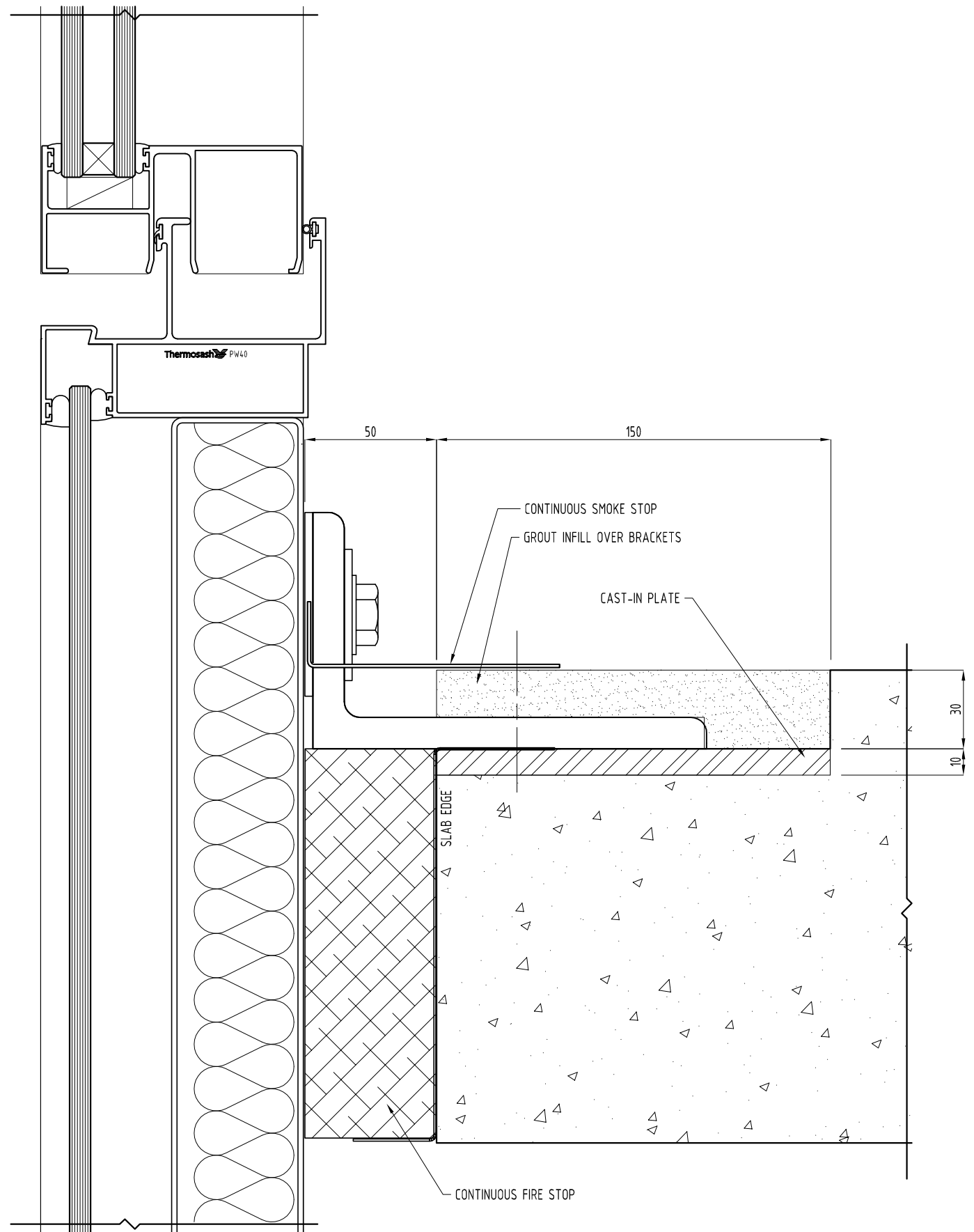
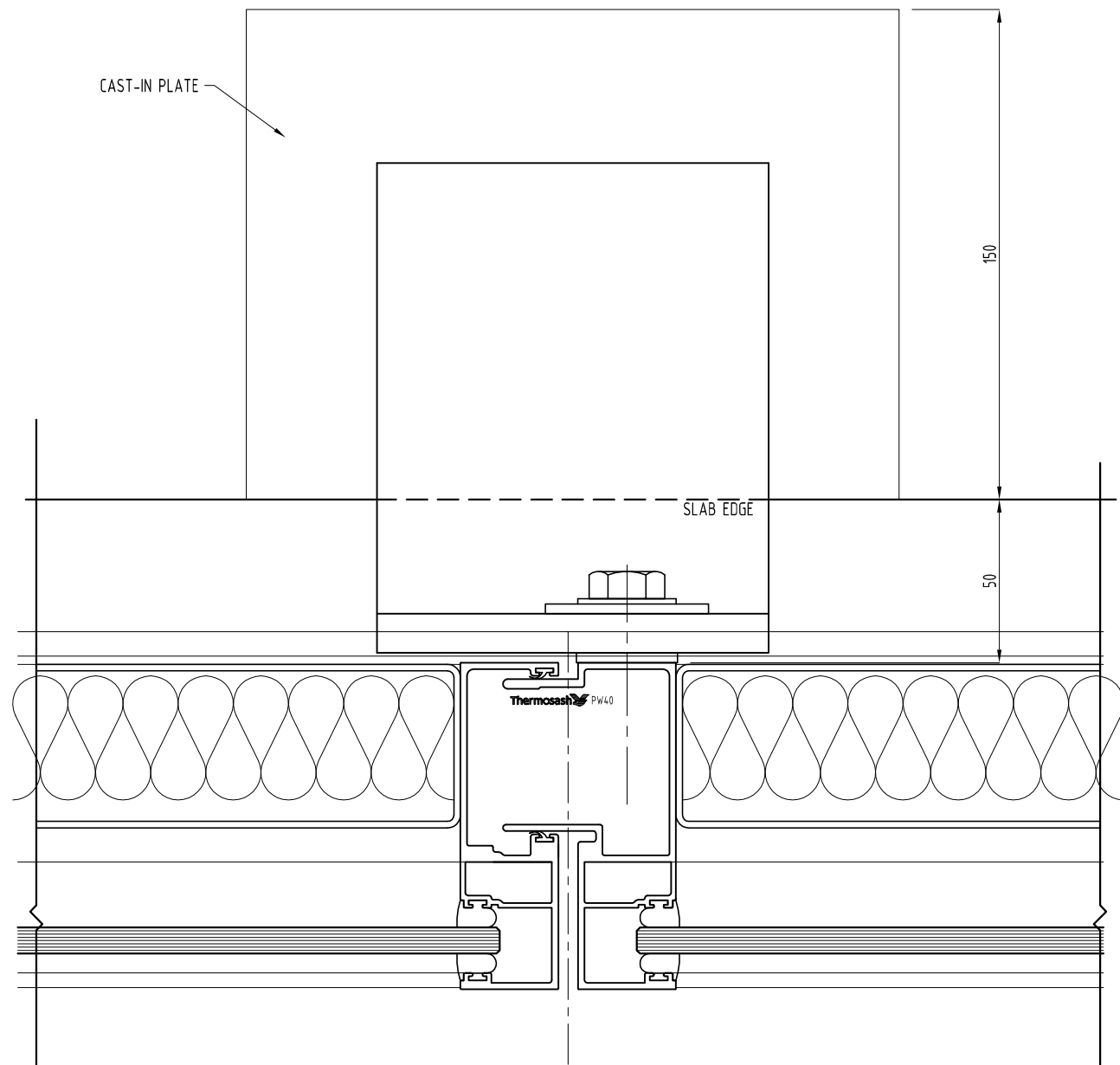


NOTES:

- 1) DRAWING TO BE USED IN CONJUNCTION WITH 'MASTERSPEC' (4211)
- 2) WINDOW SYSTEMS REQUIRE SPECIFIC DESIGN DEPENDING ON SPANS, WIND-LOADS, BUILDING CONDITIONS, ETC.
- 3) INSIDE GLAZE, INTERNAL REINFORCEMENT AND SEISMIC FRAME OPTIONS AVAILABLE

GLAZING: GLASS THICKNESS TO SUIT REQUIREMENTS
 HARDWARE: STANDARD HARDWARE OPTIONS
 FINISHES: POWDER-COAT / ANODISED / PVF²



SYSTEM : PW40 UNITISED LOWRISE PANEL SYSTEMS	TYPE : 100mm MULLION FIXING BRACKET	SCALE:	DATE:	
		1:2 @ A3	Aug-14	
www.thermosash.co.nz ~ AUCKLAND: (09)444-4944 ~ WELLINGTON: (04)939-4500 ~ CHRISTCHURCH: (03)348-4004		PAGE:	PW40-03	

P:\CONTRACTS\700 SERIES\739.00 - MANUAL\For Website\ADD TO WEBSITE\PW40 - BRACKET FIXING.dwg