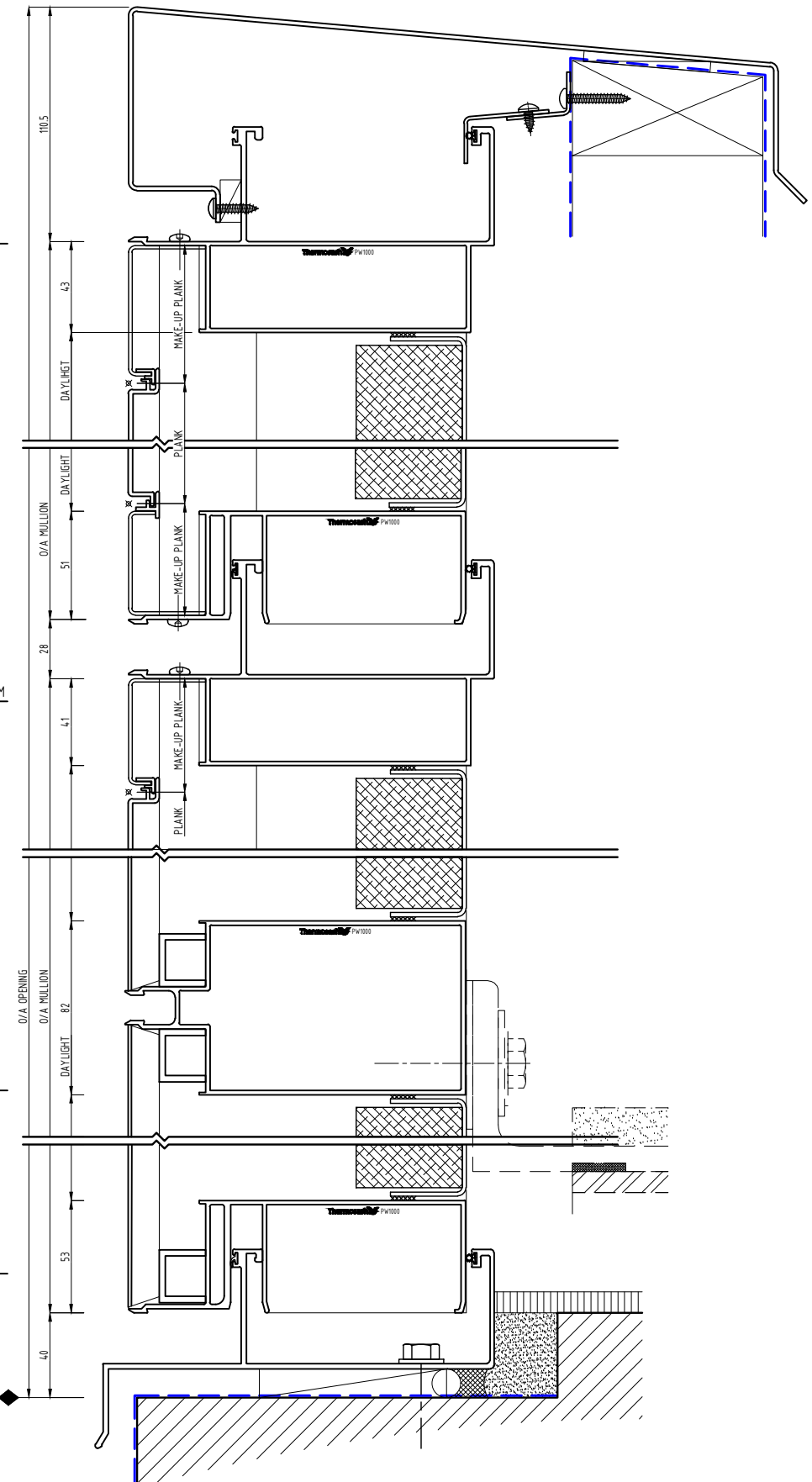
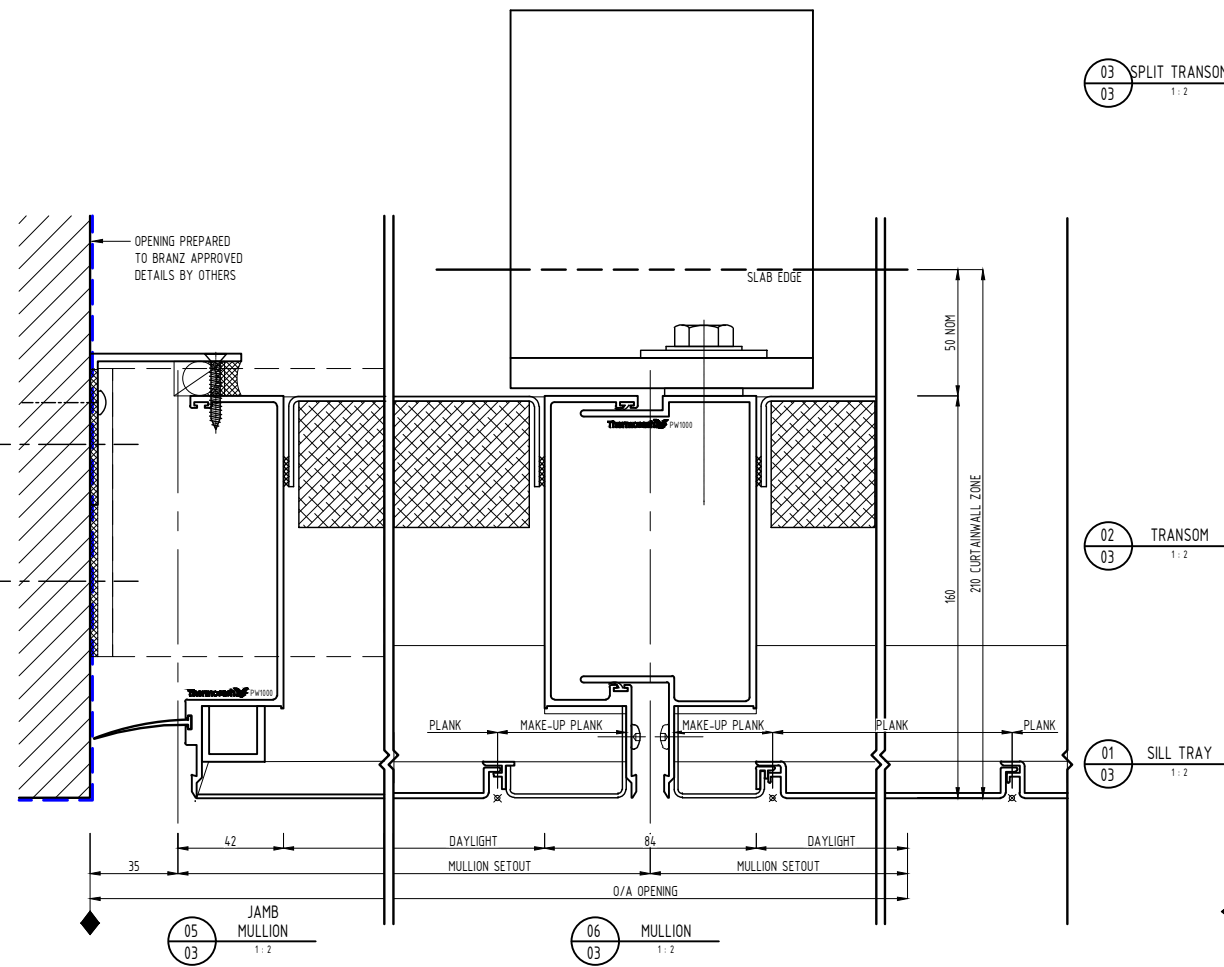
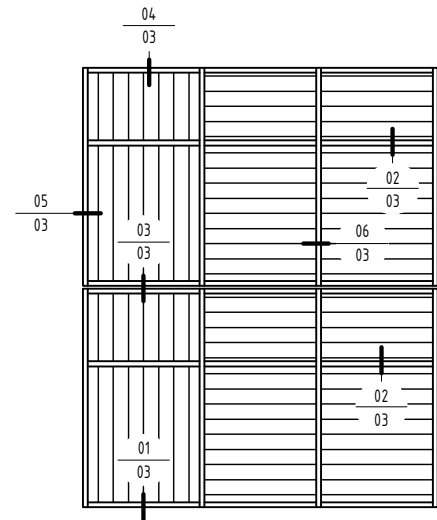
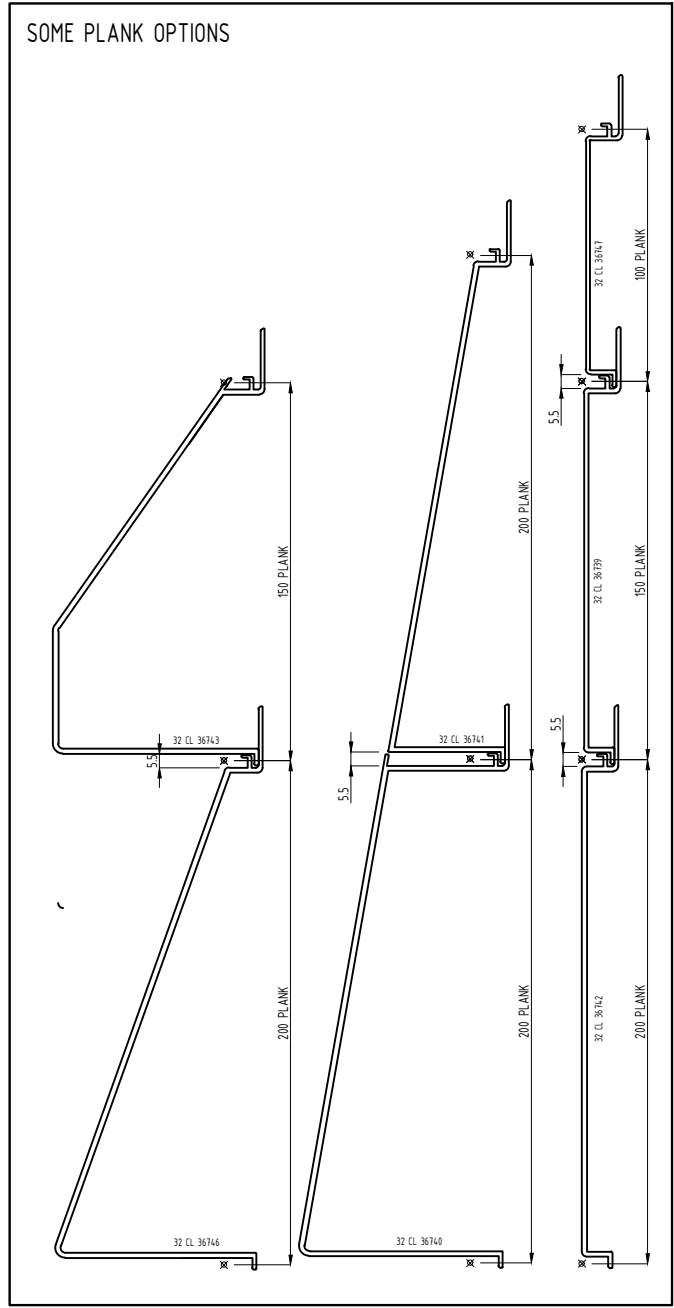


NOTES:
 1) DRAWING TO BE USED IN CONJUNCTION WITH 'MASTERSPEC' (4211)
 2) WINDOW SYSTEMS REQUIRE SPECIFIC DESIGN DEPENDING ON SPANS, WIND-LOADS, BUILDING CONDITIONS, ETC.
 3) INSIDE GLAZE, INTERNAL REINFORCEMENT AND SEISMIC FRAME OPTIONS AVAILABLE

GLAZING: GLASS THICKNESS TO SUIT REQUIREMENTS
 HARDWARE: STANDARD HARDWARE OPTIONS
 FINISHES: POWDER-COAT / ANODISED / PVF²



SYSTEM :
 PW1000
 UNITSISED HIGH PERFORMANCE PANEL
 SYSTEM

TYPE :
 160 mm MULLION
 DOUBLE GLAZED WITH ALUMINIUM PLANKS
 & INSULATED BACKPAN

SCALE: NTS
 DATE: 18/12/23
 PAGE: PW1000-17

