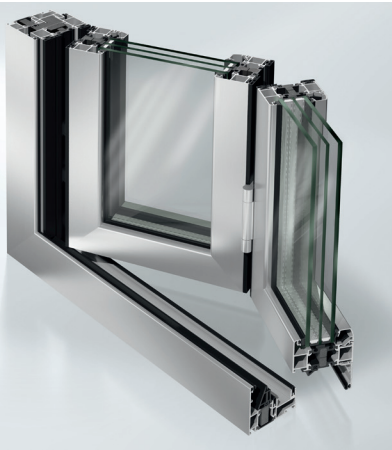


Schüco ASS 80 FD.HI

Aluminium folding / sliding system



Schüco ASS 80 FD.HI



The Schüco ASS 80 FD.HI is a unique folding sliding door that effortlessly meets the current thermal-insulation standard and also impresses with its narrow face widths and wide choice of options.

The highly thermally insulated Schüco ASS 80 FD.HI folding sliding system is a folding sliding door which achieves a U_f value of up to 1.7 W/(m²K) and a U_w value of < 1.3 W/(m²K) in addition to a wide range of designs.

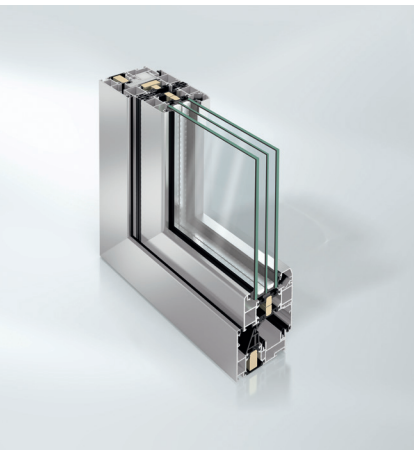
Product benefits

Schüco ASS 80 FD.HI

- Narrow face widths from 112 mm (standard fold), basic depth of 80 mm and glass thicknesses of up to 57 mm
- Flat, thermally insulated threshold allows easy access
- Centre gasket integrated in the outer frame, two drainage levels in the vent as well as glazing rebate insulation
- Units can be folded to the right, left, inwards or outwards as required
- Schüco AWS 70 BS.HI window vent can be integrated as a turn / tilt window into the folding vent

Fabrication benefits

- Greater flexibility due to the option for customer to roll profiles together
- Wide choice of colours, also different colours inside and outside
- Units can be adjusted after installation



Schüco Folding System ASS 80 FD.HI

| Technical data | |
|---------------------------|-------------------------------------|
| Test | Value |
| Thermal insulation | U_w from 1.3 W/(m ² K) |
| Basic depth of vent frame | 80mm |
| Vent size (WxH) | max. 3000mm x 1200mm |
| Vent weight | max. 100kg |
| Security class | RC2 (WK2) |
| Number of tracks | 1 |

Schüco ASS 80 FD.HI



As a leader in innovation for system-based construction, Schüco aluminium folding / sliding systems combine the highest standards in terms of energy safety, security and design with market-specific requirements.

Schüco International KG

www.schueco.com

www.schueco.de

Folgen Sie uns:
Follow us:



Schüco – System solutions for windows, doors and façades

Based in Bielefeld, the Schüco Group develops and sells system solutions for windows, doors and façades. With 6330 employees worldwide, the company strives to be the industry leader in terms of technology and service both now and in the future. In addition to innovative products for residential and commercial buildings, the building envelope specialist offers consultation and digital solutions for all phases of a building project – from the initial idea through to design, fabrication and installation. Schüco works with 10,000 fabricators and 30,000 architectural practices, as well as construction professionals who commission buildings around the world. Founded in 1951, the company is now active in more than 80 countries and achieved a turnover of 1.995 billion euros in 2021. For more information, visit www.schueco.com

Thermosash 
BUILDING ENVELOPE SOLUTIONS™

SCHÜCO



Overview

| | Schüco ASS 77 PD.SI | Schüco ASS 77 PD.HI | Schüco ASS 50 | Schüco ASS 80 FD.HI | Schüco ASS 70 FD | Schüco AS FD 90.HI | Schüco AS FD 75 | Schüco AS PD 75.HI | Schüco ASE 67 PD | Schüco ASE 80.HI | Schüco ASE 80 | Schüco ASE 60 | Schüco AWS 90.SI+ PASK |
|---------------------------------|---------------------|---------------------|---------------|---------------------|------------------|--------------------|-----------------|--------------------|------------------|------------------|---------------|---------------|------------------------|
| | Series | | | | | | | | | | | | |
| Energy | | | | | | | | | | | | | |
| Thermally insulated | | | ■ | | ■ | | ■ | | ■ | | | | |
| High Thermally insulated | ■ | ■ | | ■ | | ■ | | ■ | | ■ | ■ | ■ | ■ |
| Design | | | | | | | | | | | | | |
| Basic depth of vent frame in mm | 77 | 77 | 50 | 80 | 70 | 90 | 75 | 75 | 67 | 80 | 80 | 60 | 100 |
| Number of tracks | | | | | | | | | | | | | |
| Single track | | | ■ | ■ | ■ | ■ | ■ | | ■ | ■ | ■ | ■ | ■ |
| Double track | ■ | ■ | ■ | | | | | ■ | ■ | ■ | ■ | ■ | |
| Triple track | | | ■ | | | | | | ■ | ■ | ■ | ■ | |
| Maximum vent weight in kg | 500 | 500 | 400 | 100 | 100 | 150 | 150 | 500* | 400 | 600 | 600 | 600 | 250 |
| Fittings | | | | | | | | | | | | | |
| Crank handle | | | ■ | | | | | | | | | | |
| Sliding handle | | | ■ | | | | | ■** | ■ | ■ | ■ | ■ | |
| Tilt / slide handle | | | | | | | | | | | | | ■ |
| Folding handle | | | | ■ | ■ | ■ | ■ | | | | | | |
| Door handle | | | | ■ | ■ | ■ | ■ | | | | | | |
| Window handle | | | | ■ | ■ | ■ | ■ | | | | | | |
| Operating switch | ■ | ■ | | | | | | ■** | | ■ | ■ | ■ | |
| Opening types | | | | | | | | | | | | | |
| Sliding vent | ■ | ■ | ■ | | | | | ■ | | ■ | ■ | ■ | |
| Lift-and-slide vent | | | ■ | | | | | | | ■ | ■ | ■ | |
| Tilt / slide units | | | | | | | | | | | | | ■ |
| Folding sliding door | | | | ■ | ■ | ■ | ■ | | | | | | |
| Areas of Use | | | | | | | | | | | | | |
| Window | ■ | ■ | ■ | ■ | ■ | ■ | ■ | ■ | | ■ | ■ | ■ | ■ |
| Door | ■ | ■ | ■ | ■ | ■ | ■ | ■ | ■ | | ■ | ■ | ■ | ■ |

*AS PD 75.HI max weight: 500kg Manual / 600kg Performance Line / 800kg Mechatronic

**AS PD 75.HI fittings: Access Line & Design Line manual or mechatronic operation / Performance Line mechatronic operation only

Overview

| | Schüco ASS 77 PD.SI | Schüco ASS 77 PD.HI | Schüco ASS 50 | Schüco ASS 80 FD.HI | Schüco ASS 70 FD | Schüco AS FD 90.HI | Schüco AS FD 75 | Schüco AS PD 75.H | Schüco ASE 67 PD | Schüco ASE 80.HI | Schüco ASE 80 | Schüco ASE 60 | Schüco AWS 90.SI+ PASK |
|---|---------------------|---------------------|---------------|---------------------|------------------|--------------------|-----------------|-------------------|------------------|------------------|---------------|---------------|------------------------|
| Series | | | | | | | | | | | | | |
| Security | | | | | | | | | | | | | |
| Burglar resistance in accordance with DIN EN 1627 | | | | | | | | | | | | | |
| RC2 (WK2) | ■ | ■ | ■ | ■ | ■ | ■ | ■ | ■ | | ■ | ■ | ■ | ■ |
| Monitoring of closing | | ■ | | | | ■ | ■ | ■ | | ■ | ■ | ■ | |
| Automation | | | | | | | | | | | | | |
| Schüco e-slide | | | ■ | | | | | | | | | | |
| Schüco TipTronic | ■ | ■ | | | | | | ■ | | ■ | ■ | ■ | |
| Access Control | ■ | ■ | ■ | | | | | ■ | | | | | |



Thermosash

BUILDING ENVELOPE SOLUTIONS™

SCHÜCO

PARTNER

PRODUCTS

CANOPIES
SHOPFRONT
RAINSCREENS
BALUSTRADES
THERMAL BREAK
DOORS & SLIDERS
CHANNEL GLAZING
MECHANICAL LOUVRES
ROOFLIGHTS & ATRIUMS
COMMERCIAL WINDOWS
SOLARSHADING, LOUVRES & FINS
TOTAL VISION - STRUCTURAL GLAZING
UNITISED CURTAINWALL & PANELWALL FAÇADES
SCHÜCO - HIGH END RESIDENTIAL WINDOWS & DOORS

Auckland

158-164 Central Park Drive,
Henderson, Auckland 0610
PO Box 100-340, North Shore,
Auckland 0745, New Zealand
P: +64 9 444 4944
F: +64 9 444 4886

Wellington

17-19 Marine Parade, Petone,
Lower Hutt 5012, New Zealand
PO Box 38-645, Wellington Mail
Centre, Lower Hutt 5045, New Zealand
P: +64 4 939 4500
F: +64 4 939 4499

Christchurch

12 Braeburn Drive
Hornby, Christchurch 8040
PO Box 313, Christchurch 8140,
New Zealand
P: +64 4 348 4004
F: +64 4 348 4088

www.thermosash.co.nz